



SAW multimedia filters

Series/Type: **K9352M**

The following products presented in this data sheet are being withdrawn.

| Ordering Code | Substitute Product | Date of Withdrawal | Deadline Last Orders | Last Shipments |
|-----------------|--------------------|--------------------|----------------------|----------------|
| B39380K9352M100 | | 2011-01-14 | 2011-09-30 | 2012-09-30 |

For further information please contact your nearest EPCOS sales office, which will also support you in selecting a suitable substitute. The addresses of our worldwide sales network are presented at www.epcos.com/sales.

© EPCOS AG 2015. Reproduction, publication and dissemination of this publication, enclosures hereto and the information contained therein without EPCOS' prior express consent is prohibited.

EPCOS AG is a TDK Group Company.

SAW Components
K 9352 M
IF Filter for Audio Applications
38,00 MHz
Data Sheet
Standard

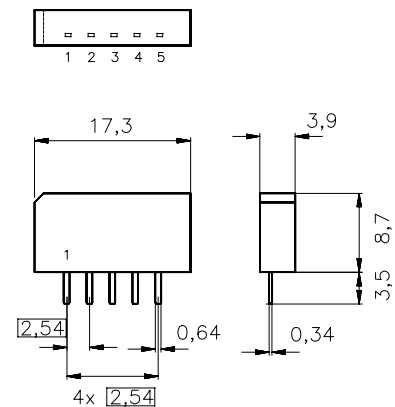
- B/G
- D/K
- I
- M/N

Features

- TV IF audio filter with pass band for sound carriers between 31,50 MHz and 33,50 MHz

Terminals

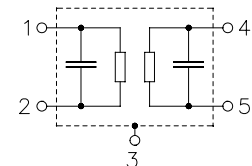
- Tinned CuFe alloy

 Plastic package **SIP5K**


Dimensions in mm, approx. weight 1,0 g

Pin configuration

- | | |
|---|-----------------------|
| 1 | Input |
| 2 | Input - ground |
| 3 | Chip carrier - ground |
| 4 | Output |
| 5 | Output |



| Type | Ordering code | Marking and package according to | Packing according to |
|----------|-------------------|----------------------------------|----------------------|
| K 9352 M | B39380-K9352-M100 | C61157-A1-A15 | F61074-V8067-Z000 |

Maximum ratings

| | | | | |
|----------------------------|-----------|---------|----|-----------------------|
| Operable temperature range | T_A | -25/+65 | °C | |
| Storage temperature range | T_{stg} | -40/+85 | °C | |
| DC voltage | V_{DC} | 5 | V | between any terminals |
| AC voltage | V_{pp} | 10 | V | between any terminals |

Data Sheet
Characteristics

Reference temperature:

$T_A = 25 \text{ }^\circ\text{C}$

Terminating source impedance:

$Z_S = 50 \text{ } \Omega$

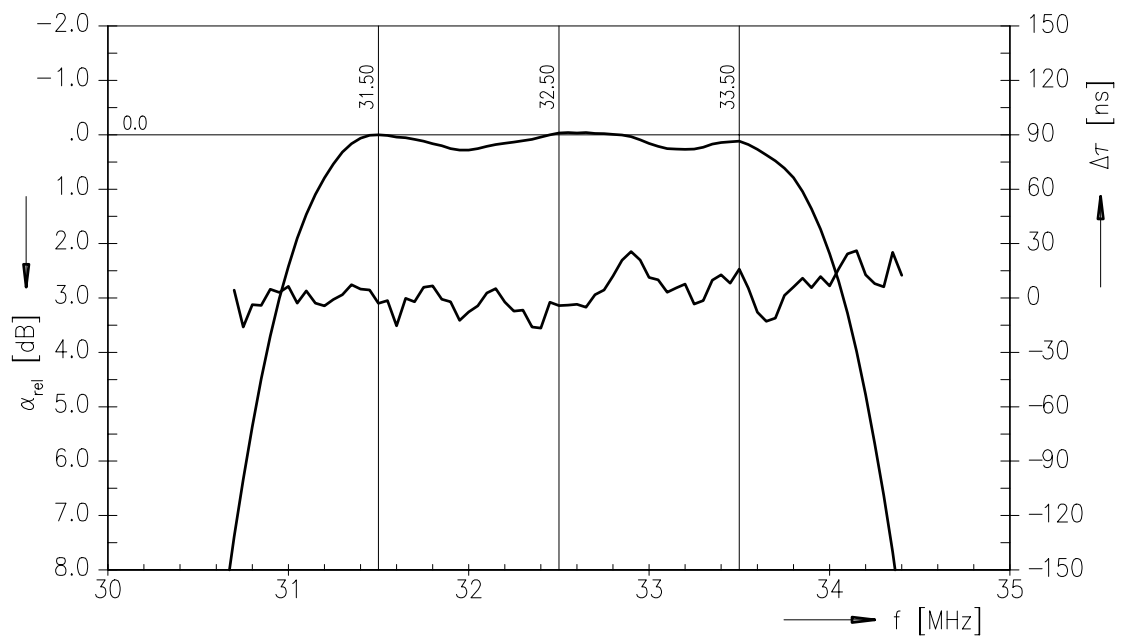
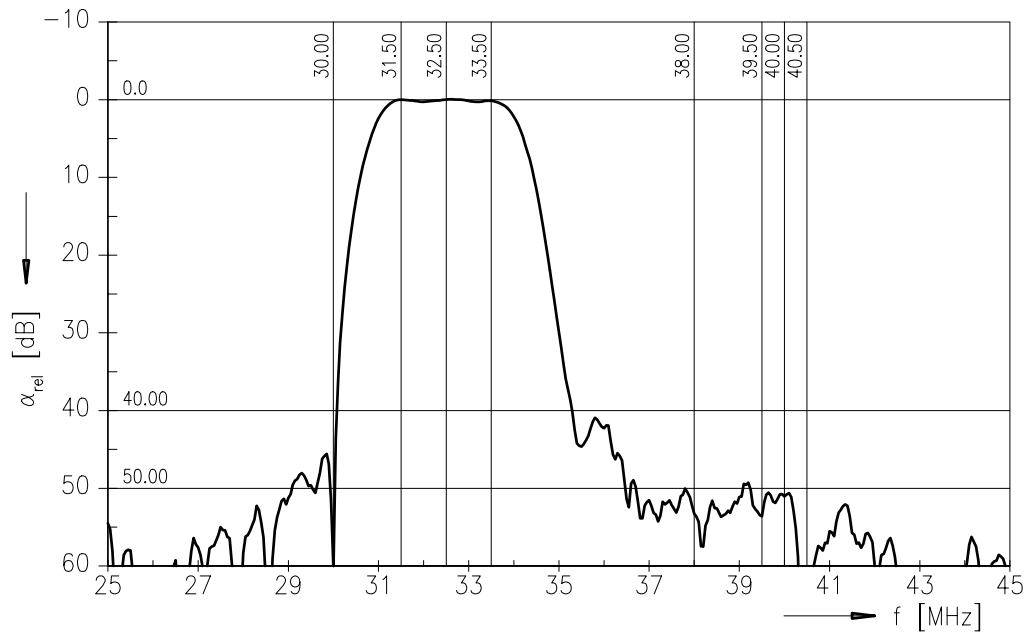
Terminating load impedance:

$Z_L = 2 \text{ k}\Omega \parallel 3 \text{ pF}$

| | | min. | typ. | max. | |
|---|---|------|-------------|------|------------------|
| Insertion attenuation | | | | | |
| | α | | | | |
| Reference level for the following data | 31,50 MHz | 11,8 | 13,3 | 14,8 | dB |
| Relative attenuation | | | | | |
| | α_{rel} | | | | |
| Sound carrier | 32,50 MHz | -1,1 | -0,1 | 0,9 | dB |
| | 33,50 MHz | -0,8 | 0,2 | 1,2 | dB |
| Picture carrier | 38,00 MHz | 44,0 | 52,0 | — | dB |
| Adjacent picture carrier | 30,00 MHz | 42,0 | 54,0 | — | dB |
| Adjacent sound carrier | 39,50 MHz | 42,0 | 52,0 | — | dB |
| | 40,00 MHz | 40,0 | 47,0 | — | dB |
| | 40,50 MHz | 44,0 | 56,0 | — | dB |
| Lower sidelobe | 25,00 ... 30,00 MHz | 37,0 | 43,0 | — | dB |
| Upper sidelobe | 38,00 ... 45,00 MHz | 39,0 | 46,0 | — | dB |
| Impedance at 31,50 MHz | | | | | |
| | Input: $Z_{IN} = R_{IN} \parallel C_{IN}$ | — | 1,7 11,0 | — | k Ω pF |
| | Output: $Z_{OUT} = R_{OUT} \parallel C_{OUT}$ | — | 2,1 5,3 | — | k Ω pF |
| Temperature coefficient of frequency | | | | | |
| | TC_f | — | -72 | — | ppm/K |

Data Sheet

Frequency response



SAW Components**K 9352 M****IF Filter for Audio Applications****38,00 MHz****Data Sheet****Published by EPCOS AG****Surface Acoustic Wave Components Division, SAW CE MM PD****P.O. Box 80 17 09, D-81617 München**

© EPCOS AG 2001. All Rights Reserved.

As far as patents or other rights of third parties are concerned, liability is only assumed for components per se, not for applications, processes and circuits implemented within components or assemblies.

The information describes the type of component and shall not be considered as assured characteristics.



Terms of delivery and rights to change design reserved.

For questions on technology, prices and delivery please contact the sales offices of EPCOS AG or the international representatives.

Due to technical requirements components may contain dangerous substances. For information on the type in question please also contact one of our sales offices.

Looking for pricing, stock, or lifecycle information?

Click below to explore more details on WIN SOURCE:

-  [View B39380K9352M100 on WIN SOURCE](#)
-  [Qualcomm Information](#)

Optimize Your Supply Chain with WIN SOURCE Solutions

-  Global Sourcing Solution
-  Obsolete Management
-  Cost Control Management
-  Shortage Management
-  Alternative Solution
-  Excess Inventory Management