



**THE DATASHEET OF
TXS0202YZPR**

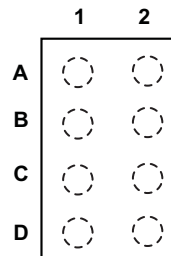


A Inter Chip-USB Voltage Level Translator

 Check for Samples: [TXS0202](#)

FEATURES

- **No Direction Control Signal Required**
- **V_{CCA}, V_{CCB} Supply Voltage: 1.65 V to 3.6 V**
- **Meets All Requirements of the IC-USB Standard**
- **Small Packages: WCSP**
- **Latch-Up Performance Exceeds 100 mA Per JESD 78, Class II**
- **I_{off} Supports Partial-Power-Down Mode Operation**
- **ESD Performance**
 - **A port (Host-Side)**
 - **2000-V Human-Body Model**
 - **100-V Machine Model**
 - **500-V Charged-Device Model**
 - **B port (Peripheral-Side)**
 - **>4kV HBM**


Table 1. YZP TERMINAL ASSIGNMENTS (Top Through View)

	1	2
A	D+(B)	D–(B)
B	GND	V _{CCB}
C	V _{CCA}	OE
D	D+(A)	D–(A)

DESCRIPTION

The TXS0202 is a 2-bit voltage level translator optimized for use in Interchip USB (IC-USB) applications. V_{CCA} and V_{CCB} can each operate over the full range of 1.65 V to 3.6 V. The device has been designed to maintain cross-over skew to be less than 1 ns. The device has integrated pull-ups and pull-down resistors to aid in the protocol communication between a host and a peripheral. The translator is a buffered auto-direction sensing type translator. When the output-enable (OE) input is low, all outputs are placed in the high-impedance state.

This device is fully specified for partial-power-down applications using I_{off}. The I_{off} circuitry disables the outputs, preventing damaging current backflow through the device when it is powered down. To ensure the high-impedance state during power up or power down, OE should be tied to GND through a pull-down resistor; the minimum value of the resistor is determined by the current-sourcing capability of the driver.

ORDERING INFORMATION⁽¹⁾

T _A	PACKAGE ⁽²⁾		ORDERABLE PART NUMBER	TOP-SIDE MARKING
–40°C to 85°C	WCSP – YZP	Tape and reel	TXS0202YZPR	___7PS_ ⁽³⁾

(1) For the most current package and ordering information, see the Package Option Addendum at the end of this document, or see the TI website at www.ti.com.

(2) Package drawings, thermal data, and symbolization are available at www.ti.com/packaging.

(3) YZP: The actual top-side marking has three preceding characters to denote year, month, and sequence code, and one following character to designate the wafer fab/assembly site.

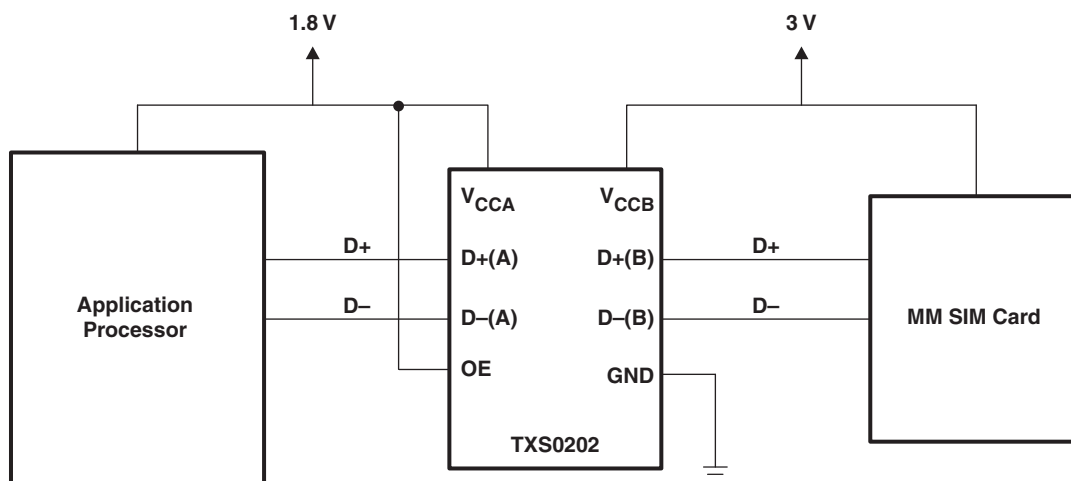


Please be aware that an important notice concerning availability, standard warranty, and use in critical applications of Texas Instruments semiconductor products and disclaimers thereto appears at the end of this data sheet.



These devices have limited built-in ESD protection. The leads should be shorted together or the device placed in conductive foam during storage or handling to prevent electrostatic damage to the MOS gates.

TYPICAL APPLICATION BLOCK DIAGRAM



PIN FUNCTIONS

PIN		DESCRIPTION
WSCP (YFP) BALL NO.	NAME	
A1	D+(B)	USB data signal connected to peripheral
A2	D-(B)	USB data signal connected to peripheral
B1	GND	Ground
B2	V _{CCB}	B-side supply voltage (1.65 V to 3.6 V)
C1	V _{CCA}	A-side supply voltage (1.65 V to 3.6 V)
C2	OE	Output enable input control
D1	D+(A)	USB data signal connected to host
D2	D-(A)	USB data signal connected to host

FUNCTIONAL TABLE

CONTROL INPUT	OUTPUT CIRCUIT	OPERATION
OE	B PORT	
L	Hi-Z	Isolation
H	Enabled	Bi-directional communications between host and peripheral

ABSOLUTE MAXIMUM RATINGS⁽¹⁾

over operating free-air temperature range (unless otherwise noted)

		MIN	MAX	UNIT
V_{CCA} V_{CCB}	Supply voltage rang	-0.5	4.6	V
V_I	Input voltage range	A port, B port, control inputs		V
V_O	Voltage range applied to any output in the high-impedance or power-off state	A port, B port		V
I_{IK}	Input clamp current	$V_I < 0$	-50	mA
I_{OK}	Output clamp current	$V_O < 0$	-50	mA
I_{CC} I_{GND}	Continuous current through V_{CCA} , V_{CCB} , or GND		±100	mA
T_{stg}	Storage temperature range	-65	150	°C

(1) Stresses beyond those listed under "absolute maximum ratings" may cause permanent damage to the device. These are stress ratings only, and functional operation of the device at these or any other conditions beyond those indicated under "recommended operating conditions" is not implied. Exposure to absolute-maximum-rated conditions for extended periods may affect device reliability.

THERMAL INFORMATION

THERMAL METRIC ⁽¹⁾		TXS0202	UNITS
		YZP	
		8 PINS	
θ_{JA}	Junction-to-ambient thermal resistance	102	°C/W

(1) For more information about traditional and new thermal metrics, see the *IC Package Thermal Metrics* application report, [SPRA953](#).

RECOMMENDED OPERATING CONDITIONS

		MIN	MAX	UNIT
V_{CCA} , V_{CCB}	Supply voltage	1.65	3.6	V
V_{IH}	High-level input voltage	A port I/Os	$V_{CCA} - 0.2$	V_{CCA}
		B port I/Os	$V_{CCB} - 0.2$	V_{CCB}
		OE	$V_{CCA} \times 0.65$	3.6
V_{IL}	Low-level input voltage	A port I/Os	0	0.15
		B port I/Os	0	0.15
		OE	0	$V_{CCA} \times 0.35$
$\Delta t/\Delta v$	Input transition rise or fall rate		10	ns/V
T_A	Operating free-air temperature	-40	85	°C

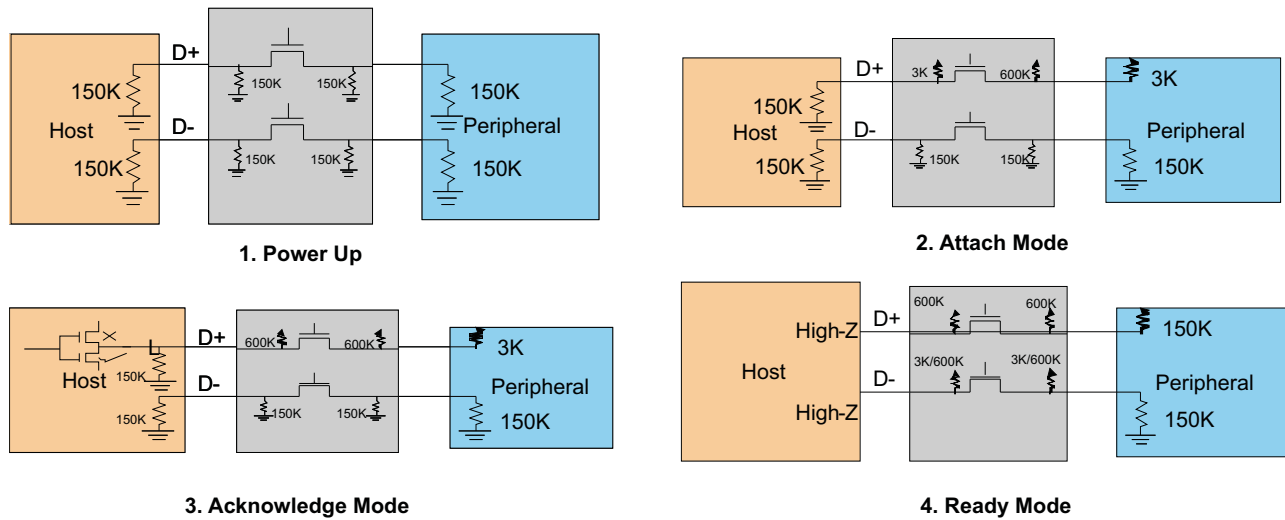


Figure 1. Block Diagram Showing Different Modes in the TXS0202

ELECTRICAL CHARACTERISTICS

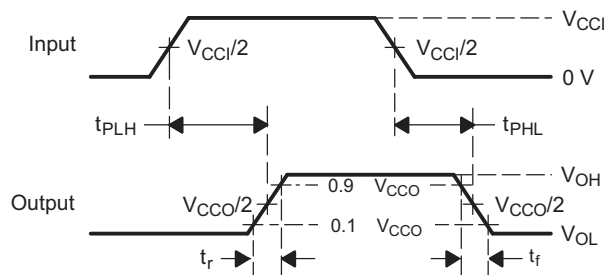
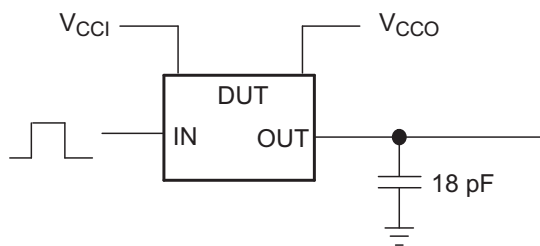
PARAMETER	TEST CONDITIONS	V _{CCA}	V _{CCBx}	T _A = 25°C	T _A = –40°C to 85°C		UNIT
				TYP	MIN	MAX	
V _{OH(D-)} (D– A or B port)	I _{OH} = –20 μA, V _{Ix} ≥ V _{CCx} – 0.2 V	1.65 V	1.65 V		V _{CCO} × 0.67		V
		2.3 V	2.3 V		V _{CCO} × 0.67		
		3.3 V	3.3 V		V _{CCO} × 0.67		
V _{OL(D-)} (D– A or B port)	I _{OL} = 220 μA, V _{Ix} ≤ 0.15 V	1.65 V	1.65 V		0.45		V
		2.3 V	2.3 V		0.55		
		3.3 V	3.3 V		0.7		
V _{OH(D+)} (D+ A or B port)	I _{OH} = –20 μA, V _{Ix} ≥ V _{CCx} – 0.2 V	1.65 V	1.65 V		V _{CCO} × 0.67		V
		2.3 V	2.3 V		V _{CCO} × 0.67		
		3.3 V	3.3 V		V _{CCO} × 0.67		
V _{OL(D+)} (D+ A or B port)	I _{OL} = 220 μA, V _{Ix} ≤ 0.15 V	1.65 V	1.65 V		0.45		V
		2.3 V	2.3 V		0.55		
		3.3 V	3.3 V		0.7		
I _I	OE	1.65 V to 3.6 V	1.65 V to 3.6 V	±2	±2		μA
	D–/D+ A or B port, OE = OPEN			±2	±2		
	I _{BOFF} , D+, D– B port	1.65 V to 3.6 V	0 V		±2		
	I _{AOFF} , D+, D– A port	0 V	1.65 V to 3.6 V		±2		
I _{CCA}	V _I = V _O = Open, OE = High	1.65 V to 3.6 V	1.65 V to 3.6 V	2.2	12		μA
		3.6 V	0 V	2.3	12		
		0 V	3.6 V	0.026	–1		
I _{CCB}	V _I = V _O = Open, OE = High	1.65 V to 3.6 V	1.65 V to 3.6 V	2.7	24		μA
		3.6 V	0 V	0.031	–12		
		0 V	3.6 V	2.7	24		
C _i	OE	3.6 V	3.6 V	2.5	3.5		pF
C _{io}	A port	3.6 V	3.6 V	7	7.5		pF
	B port			9.5	10		

SWITCHING CHARACTERISTICS

over recommended operating free-air temperature range, $V_{CCA} = 1.8 \text{ V} \pm 0.15 \text{ V}$ (unless otherwise noted)

PARAMETER	FROM (INPUT)	TO (OUTPUT)	$V_{CCB} = 1.8 \text{ V} \pm 0.15 \text{ V}$	$V_{CCB} = 3.3 \text{ V} \pm 0.3 \text{ V}$	UNIT
			TYP	TYP	
t_{pd}	A	B	5	5	ns
	B	A	5	5	
t_{rA}	A port rise times		2	2	ns
t_{fA}	A port fall times		2	2	ns
t_{rB}	B port rise times		2	2	ns
t_{fB}	B port fall times		2	2	ns
$t_{sk(o)}$	Channel-to-channel		0.5	0.5	ns
Max data rate			15	15	Mbps

PARAMETER MEASUREMENT INFORMATION



DATA RATE, SKEW, PROPAGATION DELAY, OUTPUT RISE AND FALL TIME MEASUREMENT

VOLTAGE WAVEFORMS PROPAGATION DELAY TIMES

- A. C_L includes probe and jig capacitance.
- B. The outputs are measured one at a time, with one transition per measurement.
- C. t_{PLH} and t_{PHL} are the same as t_{pd} .

PACKAGING INFORMATION

Orderable Device	Status (1)	Package Type	Package Drawing	Pins	Package Qty	Eco Plan (2)	Lead/Ball Finish	MSL Peak Temp (3)	Op Temp (°C)	Device Marking (4/5)	Samples
TXS0202YZPR	ACTIVE	DSBGA	YZP	8	3000	Green (RoHS & no Sb/Br)	SNAGCU	Level-1-260C-UNLIM	-40 to 85	7P	Samples

(1) The marketing status values are defined as follows:

ACTIVE: Product device recommended for new designs.

LIFEBUY: TI has announced that the device will be discontinued, and a lifetime-buy period is in effect.

NRND: Not recommended for new designs. Device is in production to support existing customers, but TI does not recommend using this part in a new design.

PREVIEW: Device has been announced but is not in production. Samples may or may not be available.

OBSOLETE: TI has discontinued the production of the device.

(2) Eco Plan - The planned eco-friendly classification: Pb-Free (RoHS), Pb-Free (RoHS Exempt), or Green (RoHS & no Sb/Br) - please check <http://www.ti.com/productcontent> for the latest availability information and additional product content details.

TBD: The Pb-Free/Green conversion plan has not been defined.

Pb-Free (RoHS): TI's terms "Lead-Free" or "Pb-Free" mean semiconductor products that are compatible with the current RoHS requirements for all 6 substances, including the requirement that lead not exceed 0.1% by weight in homogeneous materials. Where designed to be soldered at high temperatures, TI Pb-Free products are suitable for use in specified lead-free processes.

Pb-Free (RoHS Exempt): This component has a RoHS exemption for either 1) lead-based flip-chip solder bumps used between the die and package, or 2) lead-based die adhesive used between the die and leadframe. The component is otherwise considered Pb-Free (RoHS compatible) as defined above.

Green (RoHS & no Sb/Br): TI defines "Green" to mean Pb-Free (RoHS compatible), and free of Bromine (Br) and Antimony (Sb) based flame retardants (Br or Sb do not exceed 0.1% by weight in homogeneous material)

(3) MSL, Peak Temp. -- The Moisture Sensitivity Level rating according to the JEDEC industry standard classifications, and peak solder temperature.

(4) There may be additional marking, which relates to the logo, the lot trace code information, or the environmental category on the device.

(5) Multiple Device Markings will be inside parentheses. Only one Device Marking contained in parentheses and separated by a "-" will appear on a device. If a line is indented then it is a continuation of the previous line and the two combined represent the entire Device Marking for that device.

Important Information and Disclaimer: The information provided on this page represents TI's knowledge and belief as of the date that it is provided. TI bases its knowledge and belief on information provided by third parties, and makes no representation or warranty as to the accuracy of such information. Efforts are underway to better integrate information from third parties. TI has taken and continues to take reasonable steps to provide representative and accurate information but may not have conducted destructive testing or chemical analysis on incoming materials and chemicals. TI and TI suppliers consider certain information to be proprietary, and thus CAS numbers and other limited information may not be available for release.

In no event shall TI's liability arising out of such information exceed the total purchase price of the TI part(s) at issue in this document sold by TI to Customer on an annual basis.

TAPE AND REEL INFORMATION



QUADRANT ASSIGNMENTS FOR PIN 1 ORIENTATION IN TAPE



*All dimensions are nominal

Device	Package Type	Package Drawing	Pins	SPQ	Reel Diameter (mm)	Reel Width W1 (mm)	A0 (mm)	B0 (mm)	K0 (mm)	P1 (mm)	W (mm)	Pin1 Quadrant
TXS0202YZPR	DSBGA	YZP	8	3000	180.0	8.4	1.02	2.02	0.63	4.0	8.0	Q1

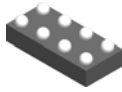
TAPE AND REEL BOX DIMENSIONS



*All dimensions are nominal

Device	Package Type	Package Drawing	Pins	SPQ	Length (mm)	Width (mm)	Height (mm)
TXS0202YZPR	DSBGA	YZP	8	3000	182.0	182.0	20.0

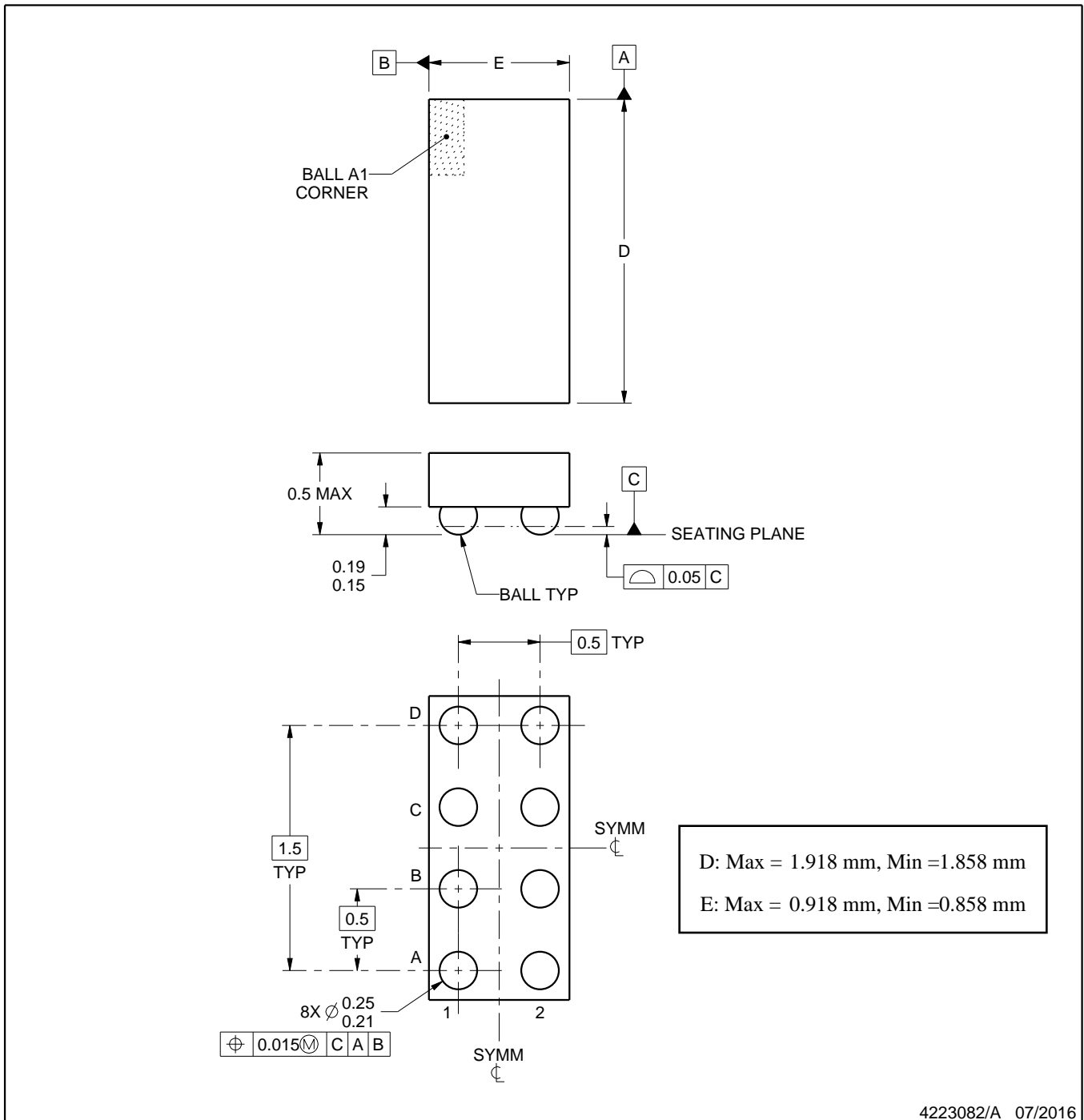
YZP0008



PACKAGE OUTLINE

DSBGA - 0.5 mm max height

DIE SIZE BALL GRID ARRAY



NOTES:

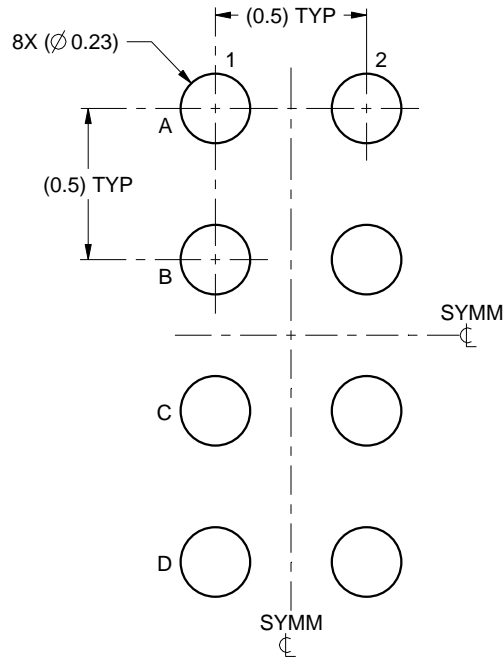
1. All linear dimensions are in millimeters. Any dimensions in parenthesis are for reference only. Dimensioning and tolerancing per ASME Y14.5M.
2. This drawing is subject to change without notice.

EXAMPLE BOARD LAYOUT

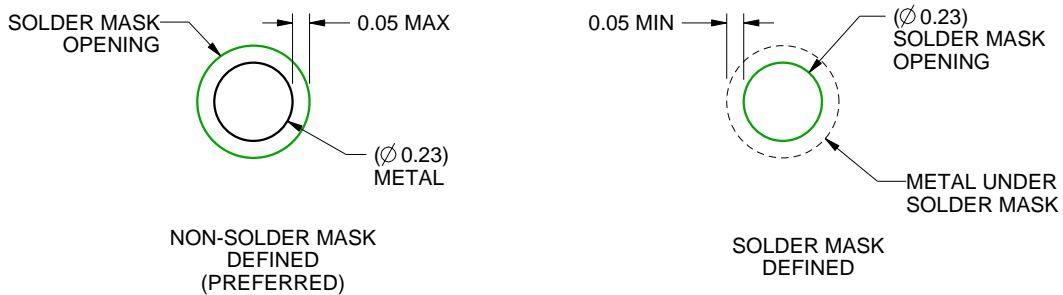
YZP0008

DSBGA - 0.5 mm max height

DIE SIZE BALL GRID ARRAY



LAND PATTERN EXAMPLE
SCALE:40X



SOLDER MASK DETAILS
NOT TO SCALE

4223082/A 07/2016

NOTES: (continued)

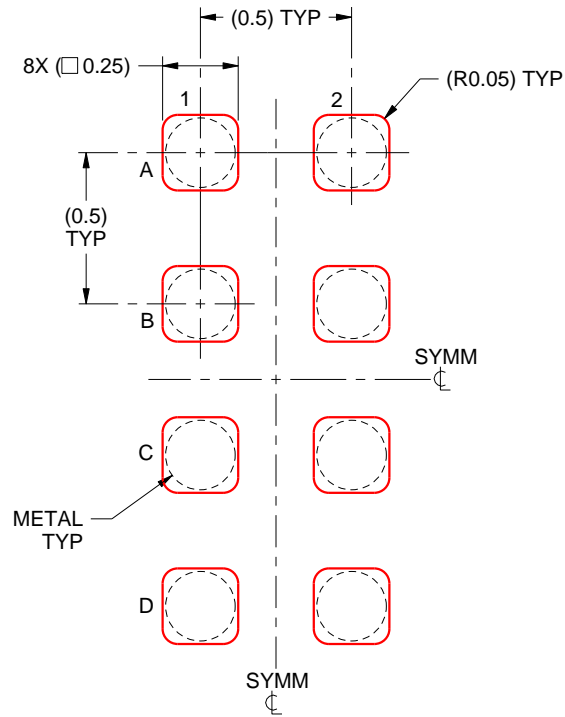
- Final dimensions may vary due to manufacturing tolerance considerations and also routing constraints. For more information, see Texas Instruments literature number SNVA009 (www.ti.com/lit/snva009).

EXAMPLE STENCIL DESIGN

YZP0008

DSBGA - 0.5 mm max height

DIE SIZE BALL GRID ARRAY



SOLDER PASTE EXAMPLE
BASED ON 0.1 mm THICK STENCIL
SCALE:40X

4223082/A 07/2016

NOTES: (continued)

4. Laser cutting apertures with trapezoidal walls and rounded corners may offer better paste release.

IMPORTANT NOTICE

Texas Instruments Incorporated (TI) reserves the right to make corrections, enhancements, improvements and other changes to its semiconductor products and services per JESD46, latest issue, and to discontinue any product or service per JESD48, latest issue. Buyers should obtain the latest relevant information before placing orders and should verify that such information is current and complete.

TI's published terms of sale for semiconductor products (<http://www.ti.com/sc/docs/stdterms.htm>) apply to the sale of packaged integrated circuit products that TI has qualified and released to market. Additional terms may apply to the use or sale of other types of TI products and services.

Reproduction of significant portions of TI information in TI data sheets is permissible only if reproduction is without alteration and is accompanied by all associated warranties, conditions, limitations, and notices. TI is not responsible or liable for such reproduced documentation. Information of third parties may be subject to additional restrictions. Resale of TI products or services with statements different from or beyond the parameters stated by TI for that product or service voids all express and any implied warranties for the associated TI product or service and is an unfair and deceptive business practice. TI is not responsible or liable for any such statements.

Buyers and others who are developing systems that incorporate TI products (collectively, "Designers") understand and agree that Designers remain responsible for using their independent analysis, evaluation and judgment in designing their applications and that Designers have full and exclusive responsibility to assure the safety of Designers' applications and compliance of their applications (and of all TI products used in or for Designers' applications) with all applicable regulations, laws and other applicable requirements. Designer represents that, with respect to their applications, Designer has all the necessary expertise to create and implement safeguards that (1) anticipate dangerous consequences of failures, (2) monitor failures and their consequences, and (3) lessen the likelihood of failures that might cause harm and take appropriate actions. Designer agrees that prior to using or distributing any applications that include TI products, Designer will thoroughly test such applications and the functionality of such TI products as used in such applications.

TI's provision of technical, application or other design advice, quality characterization, reliability data or other services or information, including, but not limited to, reference designs and materials relating to evaluation modules, (collectively, "TI Resources") are intended to assist designers who are developing applications that incorporate TI products; by downloading, accessing or using TI Resources in any way, Designer (individually or, if Designer is acting on behalf of a company, Designer's company) agrees to use any particular TI Resource solely for this purpose and subject to the terms of this Notice.

TI's provision of TI Resources does not expand or otherwise alter TI's applicable published warranties or warranty disclaimers for TI products, and no additional obligations or liabilities arise from TI providing such TI Resources. TI reserves the right to make corrections, enhancements, improvements and other changes to its TI Resources. TI has not conducted any testing other than that specifically described in the published documentation for a particular TI Resource.

Designer is authorized to use, copy and modify any individual TI Resource only in connection with the development of applications that include the TI product(s) identified in such TI Resource. NO OTHER LICENSE, EXPRESS OR IMPLIED, BY ESTOPPEL OR OTHERWISE TO ANY OTHER TI INTELLECTUAL PROPERTY RIGHT, AND NO LICENSE TO ANY TECHNOLOGY OR INTELLECTUAL PROPERTY RIGHT OF TI OR ANY THIRD PARTY IS GRANTED HEREIN, including but not limited to any patent right, copyright, mask work right, or other intellectual property right relating to any combination, machine, or process in which TI products or services are used. Information regarding or referencing third-party products or services does not constitute a license to use such products or services, or a warranty or endorsement thereof. Use of TI Resources may require a license from a third party under the patents or other intellectual property of the third party, or a license from TI under the patents or other intellectual property of TI.

TI RESOURCES ARE PROVIDED "AS IS" AND WITH ALL FAULTS. TI DISCLAIMS ALL OTHER WARRANTIES OR REPRESENTATIONS, EXPRESS OR IMPLIED, REGARDING RESOURCES OR USE THEREOF, INCLUDING BUT NOT LIMITED TO ACCURACY OR COMPLETENESS, TITLE, ANY EPIDEMIC FAILURE WARRANTY AND ANY IMPLIED WARRANTIES OF MERCHANTABILITY, FITNESS FOR A PARTICULAR PURPOSE, AND NON-INFRINGEMENT OF ANY THIRD PARTY INTELLECTUAL PROPERTY RIGHTS. TI SHALL NOT BE LIABLE FOR AND SHALL NOT DEFEND OR INDEMNIFY DESIGNER AGAINST ANY CLAIM, INCLUDING BUT NOT LIMITED TO ANY INFRINGEMENT CLAIM THAT RELATES TO OR IS BASED ON ANY COMBINATION OF PRODUCTS EVEN IF DESCRIBED IN TI RESOURCES OR OTHERWISE. IN NO EVENT SHALL TI BE LIABLE FOR ANY ACTUAL, DIRECT, SPECIAL, COLLATERAL, INDIRECT, PUNITIVE, INCIDENTAL, CONSEQUENTIAL OR EXEMPLARY DAMAGES IN CONNECTION WITH OR ARISING OUT OF TI RESOURCES OR USE THEREOF, AND REGARDLESS OF WHETHER TI HAS BEEN ADVISED OF THE POSSIBILITY OF SUCH DAMAGES.

Unless TI has explicitly designated an individual product as meeting the requirements of a particular industry standard (e.g., ISO/TS 16949 and ISO 26262), TI is not responsible for any failure to meet such industry standard requirements.

Where TI specifically promotes products as facilitating functional safety or as compliant with industry functional safety standards, such products are intended to help enable customers to design and create their own applications that meet applicable functional safety standards and requirements. Using products in an application does not by itself establish any safety features in the application. Designers must ensure compliance with safety-related requirements and standards applicable to their applications. Designer may not use any TI products in life-critical medical equipment unless authorized officers of the parties have executed a special contract specifically governing such use. Life-critical medical equipment is medical equipment where failure of such equipment would cause serious bodily injury or death (e.g., life support, pacemakers, defibrillators, heart pumps, neurostimulators, and implantables). Such equipment includes, without limitation, all medical devices identified by the U.S. Food and Drug Administration as Class III devices and equivalent classifications outside the U.S.

TI may expressly designate certain products as completing a particular qualification (e.g., Q100, Military Grade, or Enhanced Product). Designers agree that it has the necessary expertise to select the product with the appropriate qualification designation for their applications and that proper product selection is at Designers' own risk. Designers are solely responsible for compliance with all legal and regulatory requirements in connection with such selection.

Designer will fully indemnify TI and its representatives against any damages, costs, losses, and/or liabilities arising out of Designer's non-compliance with the terms and provisions of this Notice.

Looking for pricing, stock, or lifecycle information?

Click below to explore more details on WIN SOURCE:

 [View TXS0202YZPR on WIN SOURCE](#)

 [Texas Instruments](#) Information

Optimize Your Supply Chain with WIN SOURCE Solutions

-  Global Sourcing Solution
-  Obsolete Management
-  Cost Control Management
-  Shortage Management
-  Alternative Solution
-  Excess Inventory Management