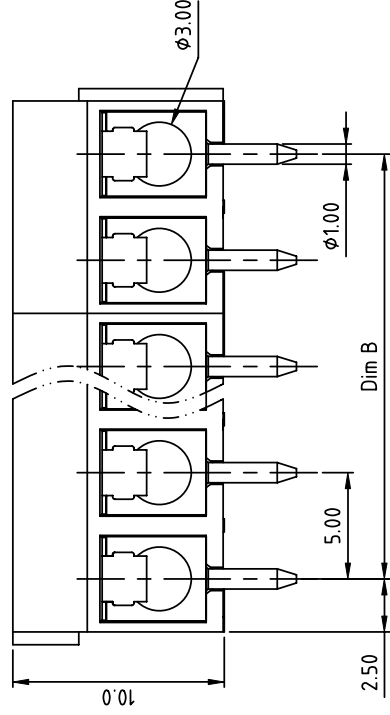
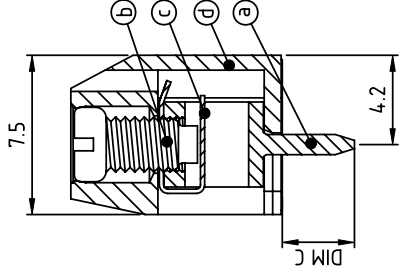
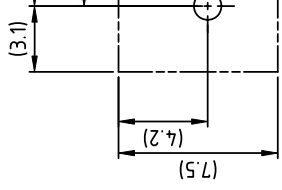
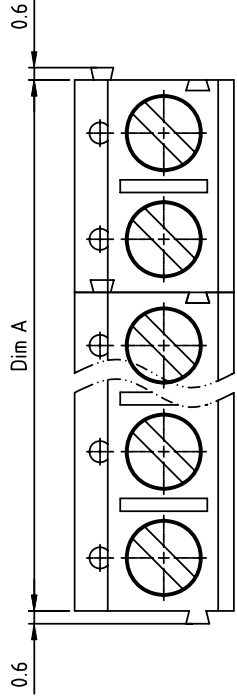




**THE DATASHEET OF  
TC2103620000G**



PRODUCT NUMBER	PITCH
TCxx03xx00J0G	5.00 mm



N = Number of poles  
 Dim A=Nx5.0  
 Dim B=(N-1)x5.0

Poles	Dim A	Dim B
2-6p	±0.15	±0.10
7-12p	±0.20	±0.20
13-18p	±0.30	±0.25
19-24p	±0.40	±0.30



PART NO.: TC XX 03 X X 00J0 G

- End stackable 0 Black (RAL9005)
  - No. of poles 2 Red (RAL3001/D)
  - 02 2 poles 3 Orange(RAL2011/P)
  - 03 3 poles 4 Yellow(RAL1018/A)
  - ... 5 Green(RAL6018/T)
  - 24 24 poles 6 Blue (RAL5015/A)
  - 8 Grey(RAL7035/D)
  - 9 White(RAL1102)
  - C Green(RAL6018/U)
- Body Color
  - 0 Black (RAL9005)
  - 2 Red (RAL3001/D)
  - 3 Orange(RAL2011/P)
  - 4 Yellow(RAL1018/A)
  - 5 Green(RAL6018/T)
  - 6 Blue (RAL5015/A)
  - 8 Grey(RAL7035/D)
  - 9 White(RAL1102)
  - C Green(RAL6018/U)
- DIM C Length RohS compliant (lead=4% in copper Alloy)
  - 0 4.4mm
  - 1 3.8mm
  - 2 3.5mm
  - 3 2.9mm

mat'l. code	itr	ecn	no	dr	date	surface	tolerances unless oth
						ASME Y14.5	
						angles	
						X	
						X±1°	
						dr	EVIN ZHON
						engr	EVIN ZHON
						chr	HANKE FEN
						appd	SHI JUN
sheet	revision	A					
index	sheet	1					

## Looking for pricing, stock, or lifecycle information?

Click below to explore more details on WIN SOURCE:

-  [View TC2103620000G on WIN SOURCE](#)
-  [Amphenol Anytek Information](#)

## Optimize Your Supply Chain with WIN SOURCE Solutions

-  Global Sourcing Solution
-  Obsolete Management
-  Cost Control Management
-  Shortage Management
-  Alternative Solution
-  Excess Inventory Management