



THE DATASHEET OF RZB80DHRN



ITEM NO.	QTY.	DESCRIPTION	DRAWING #	REF
1	1	B30HD-A350	10028	
2	60	E. B-DHH	10011	

PLATING SPECIFICATIONS	
A	.000015" GOLD
D	.00003" GOLD
G	.00001" GOLD
M	.00003" GOLD
N	.00005" GOLD
O	.00003" GOLD
P	GOLD FLASH
R	.00002" GOLD
S	.00001" GOLD
T	.0001" TINLEAD
V	.00003" GOLD
W	GOLD FLASH
X	.00003" GOLD
Y	.00003" GOLD
Z	.00001" GOLD

TERMINAL	
A	.0001" TINLEAD
D	.00003" GOLD OVERALL
G	.000005" GOLD
M	.00001" GOLD OVERALL
N	.0001" TINLEAD
O	.0001" TINLEAD
P	GOLD FLASH
R	.0001" TINLEAD
S	.00001" GOLD OVERALL
T	.0001" TINLEAD OVERALL
V	.000005" GOLD
W	.0001" TINLEAD
X	.00003" GOLD
Y	.000005" GOLD
Z	.00001" TINLEAD

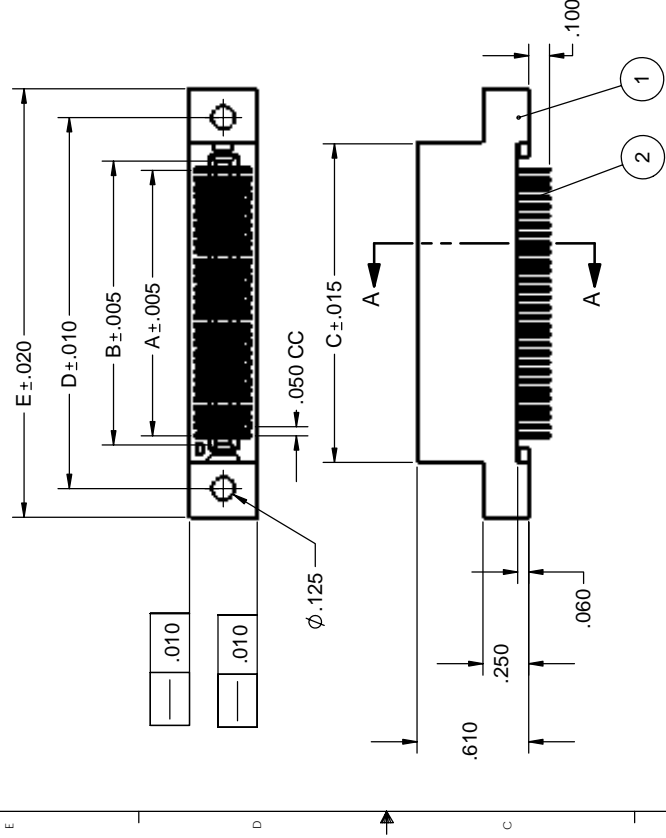
SAMPLE PART NUMBER

RZB30DHRD

PLATING
(SEE TABLE)

MOUNTING STYLE
(SEE PAGE #2)

TERMINATION TYPE
(SEE PAGE #2)



SECTION A-A
SCALE 2 : 1

**30 POSITION BOARD

NOTES:

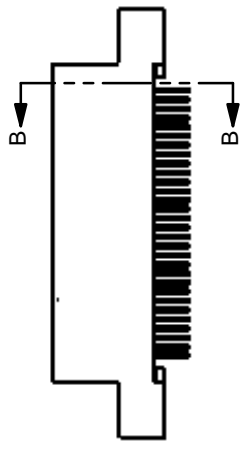
- THIS SPECIFICATION COVERS THE REQUIREMENT FOR DUAL EDGECARD CONNECTORS.
- INSULATOR MATERIAL: POLYPHENYLENE SULFIDE.
- CONTACT MATERIAL: PHOSPHOR BRONZE.
- PLATING: SEE PLATING SPEC. TABLE AND SAMPLE PART NUMBER
- TEMPERATURE: -65 °C TO 125 °C
- UL FLAMMABILITY RATING: 94V-0
- VOLTAGE RATING: 125 VDC MINIMUM AT SEA LEVEL.
- CURRENT RATING: 1 AMP
- VOLTAGE DROP: 30 MILLI VOLT AT RATED CURRENT
- INSULATION RESISTANCE: 1000 MEGA OHM
- CONNECTOR IDENTIFICATION: THE PART SHALL BE MARKED WITH A PART NUMBER AND DATE CODE.
- BOARD THICKNESS ACCOMMODATED: .054/.070
- BOARD INSERTION FORCE: 6 OUNCE AVERAGE PER CONTACT PAIR USING .062 PCB
- BOARD WITHDRAWAL FORCE: 1 OUNCE MINIMUM PER CONTACT PAIR USING .062 PCB
- TOLERANCE: ± .010" UNLESS OTHERWISE NOTED.

COMPUTER
GENERATED
DIMENSIONS
DO NOT CHANGE
MANUALLY

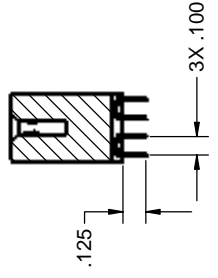
PROPRIETARY AND CONFIDENTIAL
THIS DRAWING AND DESIGN IS THE
PROPERTY OF SULLINS ELECTRONICS.
IT MAY NOT BE USED FOR ANY
PURPOSE OTHER THAN THAT FOR WHICH
SULLINS ELECTRONICS DOES NOT
AUTHORIZE THE REPRODUCTION OR
DISSEMINATION OF INFORMATION
CONTAINED HEREIN.

REV.	ECO NO.	ORIGINAL RELEASE	DESCRIPTION
			UNLESS OTHERWISE SPECIFIED DIMENSIONS ARE IN INCHES FRACTIONS: 1/32 DECIMALS: ± .02 TWO PLACE DECIMAL: ± .005 THREE PLACE DECIMAL: ± .0005 DIMENSIONS ARE IN MILLIMETERS UNLESS OTHERWISE SPECIFIED TOLERANCES: FRACTIONS: ± .005 DECIMALS: ± .005 MATERIAL: NOTED FINISH: N/A USED ON: APPLICATION DO NOT SCALE DRAWING

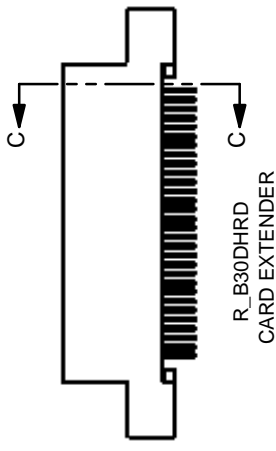
3 4 5 6 7 8



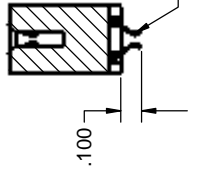
R_B30DHD
STAGGERED DIP SOLDER



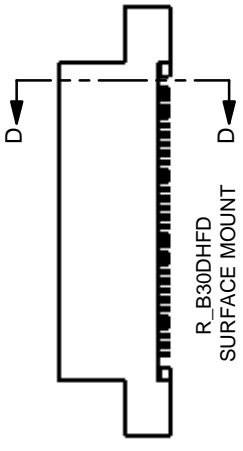
SECTION B-B
SCALE 2 : 1



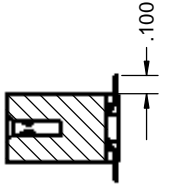
R_B30DHRD
CARD EXTENDER



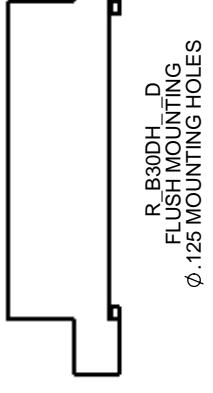
SECTION C-C
SCALE 2 : 1



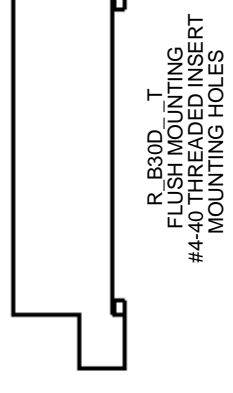
R_B30DHFD
SURFACE MOUNT



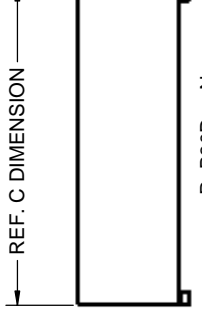
SECTION D-D
SCALE 2 : 1



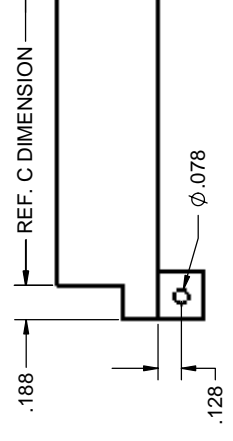
R_B30DH_D
FLUSH MOUNTING
Ø.125 MOUNTING HOLES



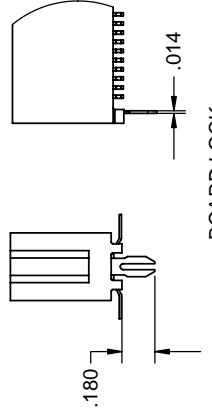
R_B30D_T
FLUSH MOUNTING
#4-40 THREADED INSERT
MOUNTING HOLES



R_B30D_N
NO MOUNTING EARS



R_B30D_Q
STRADDLE MOUNT



BOARD LOCK
(AVAILABLE FOR ALL
TERMINATION TYPES)


COMPUTER
DESIGNED
DOCUMENT
NOT CHANGE
MANUALLY

PROPRIETARY AND CONFIDENTIAL
THIS DRAWING AND DESIGN IS THE
PROPERTY OF SULLINS ELECTRONICS.
IT MAY NOT BE USED FOR ANY
PURPOSE OTHER THAN THAT
AUTHORIZED BY SULLINS ELECTRONICS. DOES NOT
AUTHORIZE THE REPRODUCTION OR
CONVEYANCE OF INFORMATION
CONTAINED HEREIN.

UNLESS OTHERWISE SPECIFIED	DR	CS
DIMENSIONS ARE IN INCHES	FR	CS
FRACTIONS: 1/16, 1/8, 3/16, 1/2, 5/8, 3/4	FR	CS
ANGULARS: 1/2°, 1°, 2°, 3°, 4°, 5°, 6°, 8°, 10°, 15°, 20°, 25°, 30°, 45°, 60°, 90°, 120°, 150°, 180°	FR	CS
THREE PLACE DECIMAL: ±.005	FR	CS
TOLERANCING FOR	FR	CS
NEAREST COATING	FR	CS
MATERIAL	FR	CS
FINISH	FR	CS
DO NOT SCALE DRAWING	FR	CS

Looking for pricing, stock, or lifecycle information?

Click below to explore more details on WIN SOURCE:

-  [View RZB80DHRN on WIN SOURCE](#)
-  [Sullins Connector Solutions Information](#)

Optimize Your Supply Chain with WIN SOURCE Solutions

-  Global Sourcing Solution
-  Obsolete Management
-  Cost Control Management
-  Shortage Management
-  Alternative Solution
-  Excess Inventory Management