



**THE DATASHEET OF  
B39421R714U310**





# SAW Components

Data Sheet R 714





SAW Components

R 714

Resonator

423,22 MHz

Data Sheet

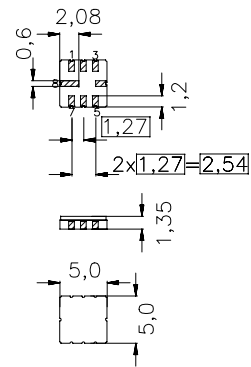
SMD Ceramic package **QCC8C**

**Features**

- 1-port resonator
- Provides reliable, fundamental mode, quartz frequency stabilization i.e. in transmitters or local oscillators

**Terminals**

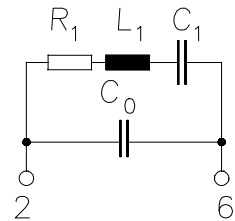
- Ni, gold plated



Dimensions in mm, approx. weight 0,1 g

**Pin configuration**

- |     |                                  |
|-----|----------------------------------|
| 2   | Input                            |
| 6   | Output, grounded in 1-port conf. |
| 4,8 | Ground (case)                    |
| 1,3 | float                            |
| 5,7 | float / ground                   |



Type	Ordering code	Marking and Package according to	Packing according to
R 714	B39431-R 714-U310	C61157-A7-A56	F61074-V8023-Z000

Electrostatic Sensitive Device (ESD)

**Maximum ratings**

Operable temperature range	$T_A$	-45/+120	°C	between any terminals
Storage temperature range	$T_{stg}$	-45/+120	°C	
DC voltage	$V_{DC}$	12	V	
Source power	$P_s$	0	dBm	



Data Sheet

Characteristics

Reference temperature:  $T_A = 25\text{ °C}$   
 Terminating Source impedance:  $Z_S = 50\ \Omega$   
 Terminating Load impedance:  $Z_L = 50\ \Omega$

		min.	typ.	max.	
<b>Center frequency</b> <sup>1)</sup>	$f_c$	423,145	423,22	423,295	MHz
<b>Minimum insertion attenuation</b>	$\alpha_{\min}$	—	1,2	1,9	dB
Unloaded quality factor	$Q_U$	6000	10000	—	
<b>Ageing of <math>f_c</math></b>		—	—	±50	ppm
<b>Equivalent circuit elements</b>					
Motional capacitance	$C_1$	—	2,228	—	fF
Motional inductance	$L_1$	—	63,47	—	μH
Motional resistance	$R_1$	—	15	27	Ω
Parallel Capacitance <sup>2)</sup>	$C_0$	—	3,4	—	pF
<b>Temperature coefficient of frequency</b> <sup>3)</sup>	$TC_f$	—	- 0,03	—	ppm/K <sup>2</sup>
Turnover temperature	$T_0$	0	—	30	°C

<sup>1)</sup> Center frequency is defined as maximum of the real part of the admittance

<sup>2)</sup> If used in two port configuration (pin 2-input, pin 6-output)  $C_0$  is reduced by approx. 0,3 pF.

<sup>3)</sup> Temperature dependence of  $f_c$ :  $f_c(T_A) = f_c(T_0)(1 + TC_f(T_A - T_0)^2)$



SAW Components

R 714

Resonator

423,22 MHz

Data Sheet

**Published by EPCOS AG**  
**Surface Acoustic Wave Components Division, SAW CE AE PD**  
**P.O. Box 80 17 09, D-81617 München**

© EPCOS AG 2001. All Rights Reserved.

As far as patents or other rights of third parties are concerned, liability is only assumed for components per se, not for applications, processes and circuits implemented within components or assemblies.

The information describes the type of component and shall not be considered as assured characteristics.



Terms of delivery and rights to change design reserved.

For questions on technology, prices and delivery please contact the sales offices of EPCOS AG or the international representatives.

Due to technical requirements components may contain dangerous substances. For information on the type in question please also contact one of our sales offices.

## Looking for pricing, stock, or lifecycle information?

Click below to explore more details on WIN SOURCE:

-  [View B39421R714U310 on WIN SOURCE](#)
-  [Qualcomm Information](#)

## Optimize Your Supply Chain with WIN SOURCE Solutions

-  Global Sourcing Solution
-  Obsolete Management
-  Cost Control Management
-  Shortage Management
-  Alternative Solution
-  Excess Inventory Management