

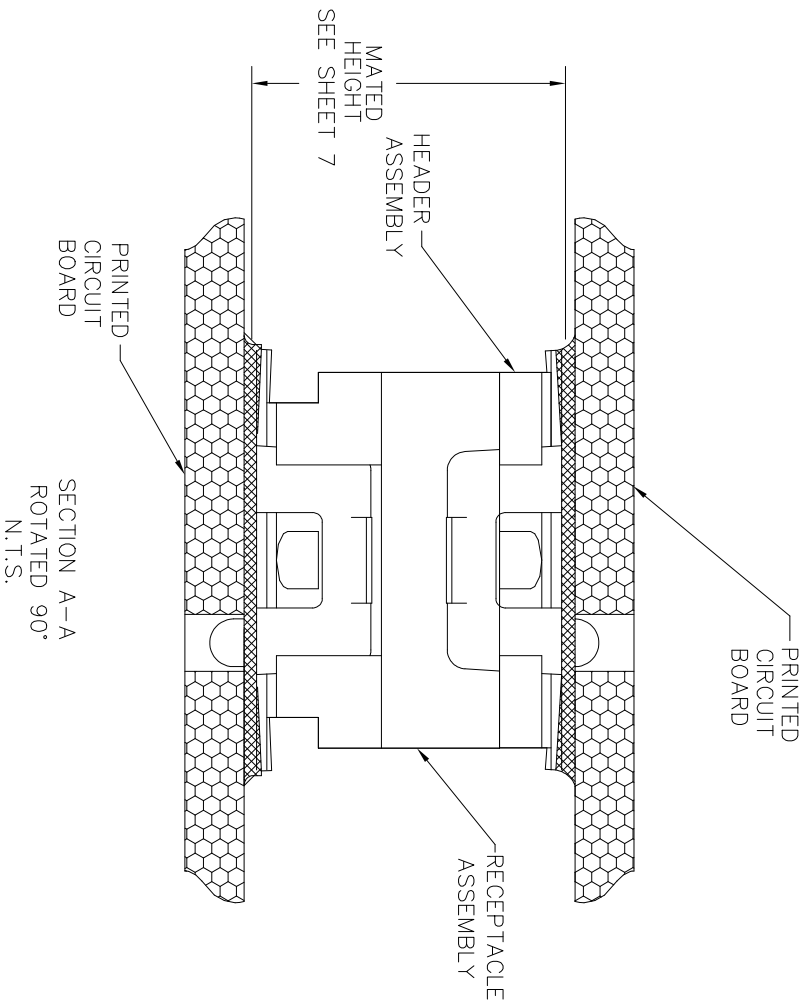
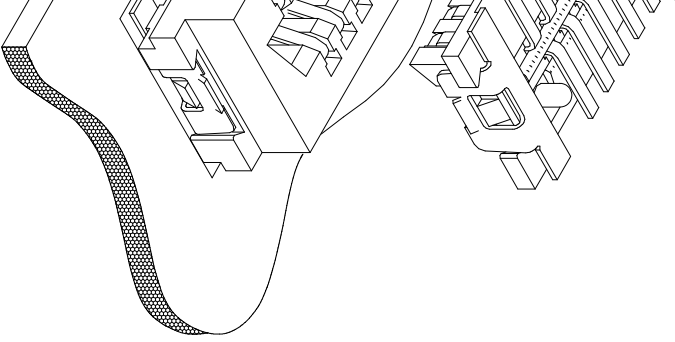


THE DATASHEET OF
91931-31109LF



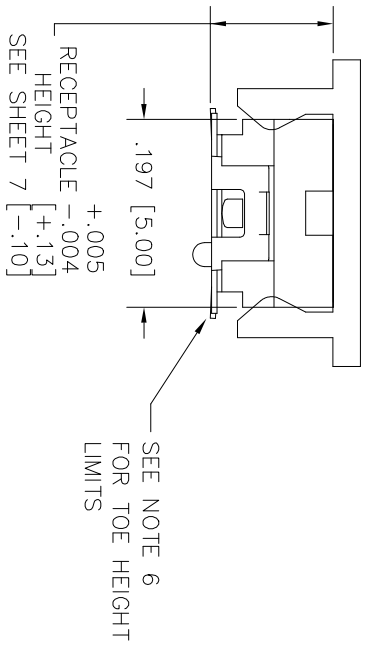
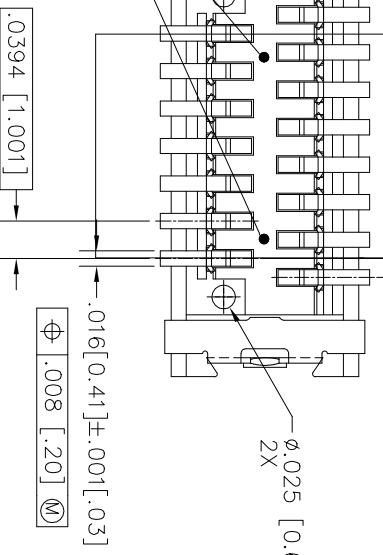
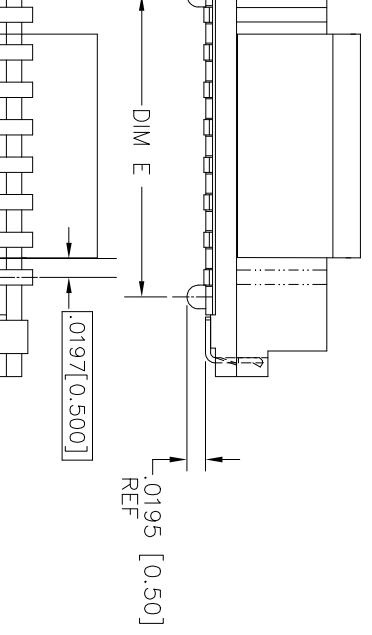
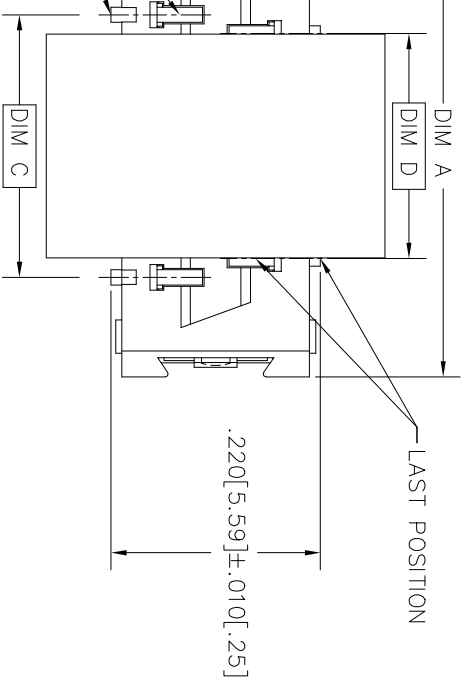
2	3	4	5	6
---	---	---	---	---

VERTICAL
HEADER
ASSEMBLY

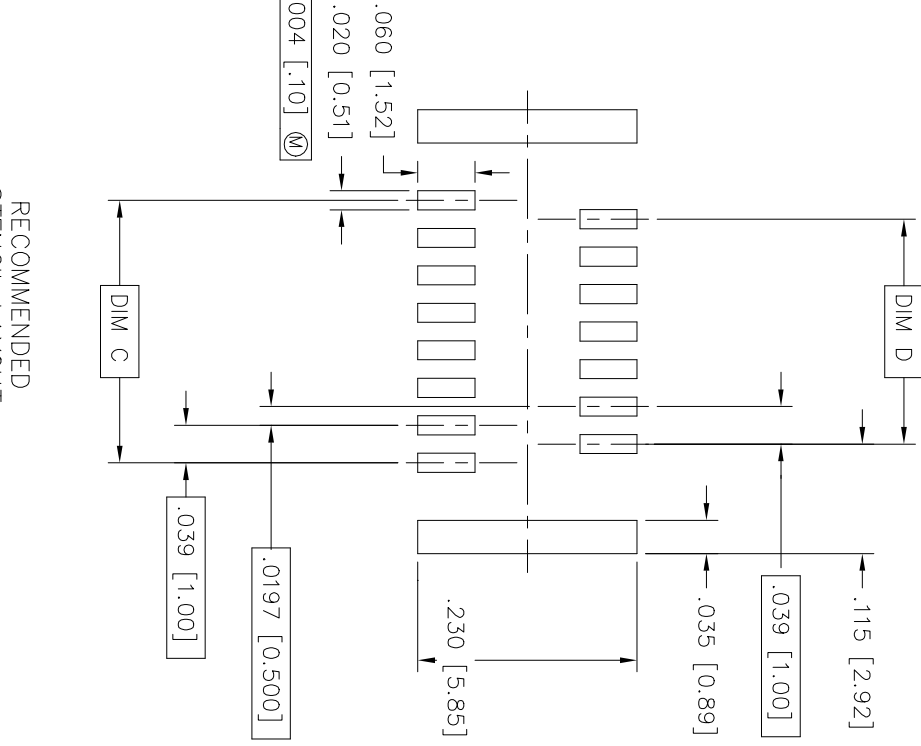
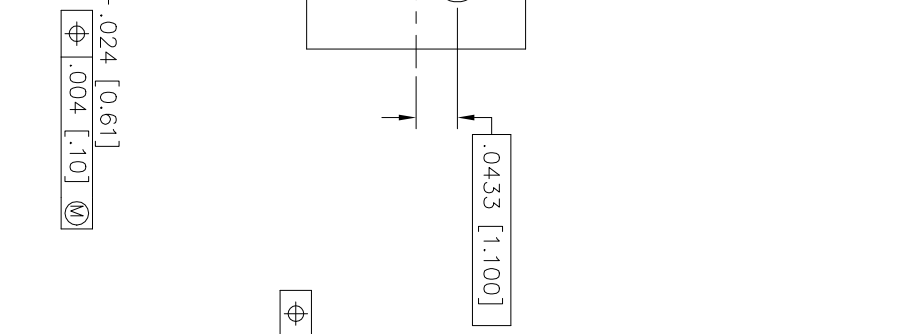
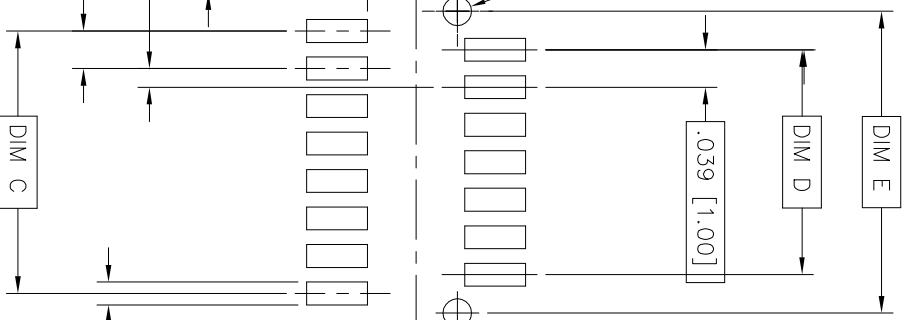
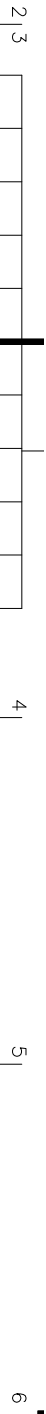


mat'l. code		surface		tolerance		projection		product family		
		ISO 1302		ISO 406		1:1		CONAN®		
ecn no dr		date		tolerances unless otherwise specified		INCH / MM		title		
AG	EX-N-14208	GM	03/07/13	.0±.30		↔		CONAN® CONNECTOR ASSEMBLY		
AH	EX-N-22454	EH	10/11/15	.00±.20		↔		dwg no		
AJ	—	EH	12/12/15	.000±.10		scale 1:1		sheet 1 of 7 size		
AK	EX-N-26578	TONY	04/07/17	dr		Eric Huang		10/11/15		
AL	EX-N-26810	TONY	04/26/17	engr		Eric Huang		10/11/15		
AM	—	chr								
AN	M08-0287	MHT	10/02/08	appd		Tim Yao		10/11/15		
AO	revision	AL	AL	AL	AL	AL	AL			
AP	sheet	sheet	1	2	3	4	5			
AP	index	sheet	1	2	3	4	5			
product family		CONAN®		type		Product Customer Drawing		A3		





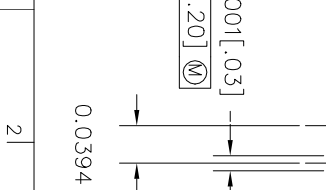
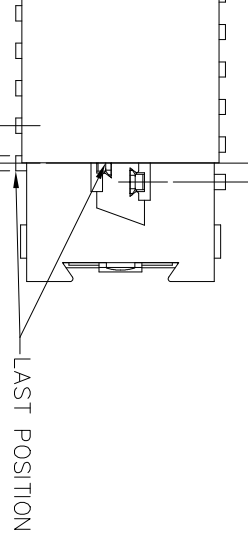
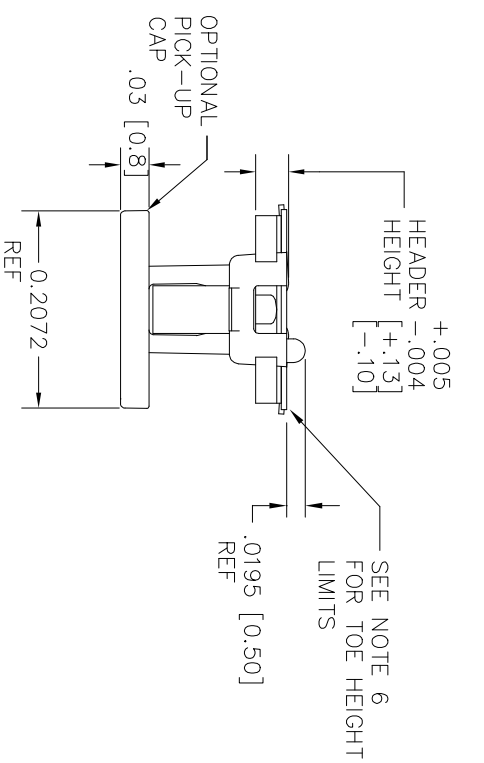
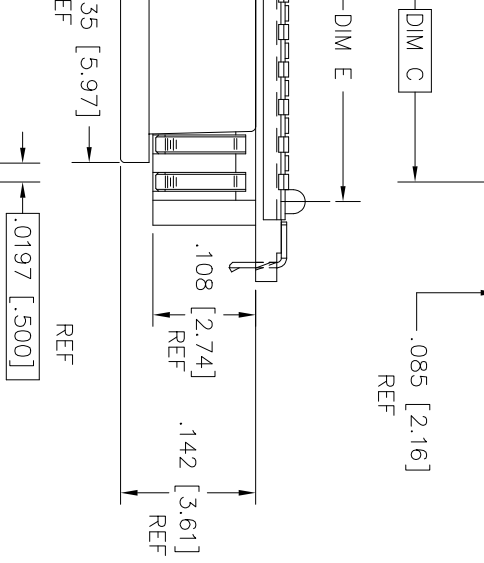
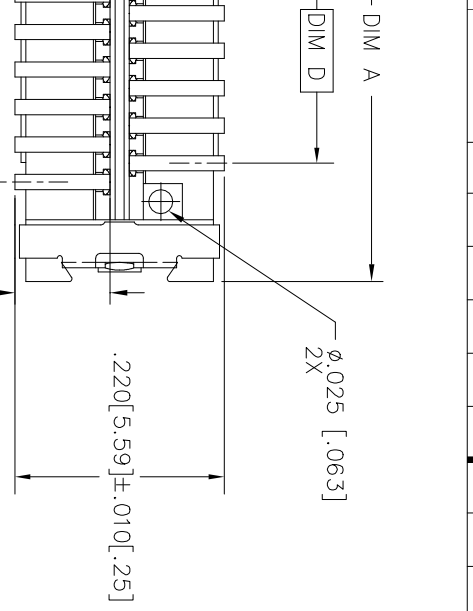
mat'l. code		surface		tolerance		projection		product family	
tr ecn no dr		ISO 1302		ISO 406		1100		CONAN®	
date		tolerances unless otherwise specified		.0±.30		INCH/MM		CONAN® CONNECTOR ASSEMBLY	
AL		angle		.00±.20		scale 1:1		sheet no	
		linear		.000±.10				91900	
		dr		Eric Huang		10/11/15		sheet 2 of 7	
		engr		Eric Huang		10/11/15		size	
		chr		appd		Tim Yao		A3	
sheet		revision						type	
index		sheet						Product Customer Drawing	



RECOMMENDED
STENCIL LAYOUT
FOR RECEPTACLE

RECOMMENDED
PAD LAYOUT

mat'l. code	surface	tolerance	projection	product family
	ISO 1302	ISO 406 ISO	1100	CONAN®
tr ecn no dr	tolerances unless otherwise specified			CONAN® CONNECTOR ASSEMBLY
AL	angles	.0±.30	INCH/MM	
	linear	.00±.20		
	0±x°	.000±.10	scale 1:1	
	dr	Eric Huang	10/11/15	sheet 3 of 7
	engr	Eric Huang	10/11/15	size A3
	chr			
sheet	appd	Tim Yao	10/11/15	
index	revision			
	sheet			



mat'l. code		surface		tolerance		projection		product family	
ISO 1302		ISO 406		ISO 1101		1101		CONAN®	
tolerances unless otherwise specified		.0±.30		INCH/MM		CONAN® CONNECTOR ASSEMBLY		CONAN®	
angles linear		.00±.20		scale 1:1		sheet no		sheet4 of 7	
0±x°		.000±.10		Amphenol FCI		91900		size	
dr Eric Huang 10/11/15		engr Eric Huang 10/11/15		type Product Customer Drawing		A3			
chr		apdd Tim Yao 10/11/15							
sheet revision									
index sheet									

title
CONAN® CONNECTOR ASSEMBLY

product family
CONAN®

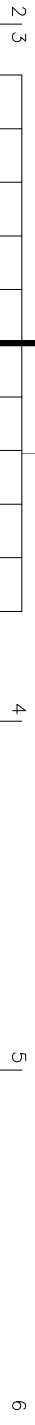
sheet no
91900

sheet4 of 7

size
A3

type
Product Customer Drawing

2 3 4 5 6



ASSEMBLY PART NUMBER

C - W X Y ZZ LF

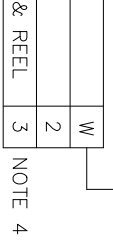
LEAD FREE OPTION
SEE NOTE 12

Y	HEADER HEIGHT	RECEPTACLE HEIGHT	MATED HEIGHT + .010 - .008 [+.25] [-.20]
1	.034 [.86]	.129 [3.28]	.163 [4.15]
2	.048 [1.23]		.177 [4.50]
3	.068 [1.73]		.197 [5.00]
4	.107 [2.72]	SEE Y=1 FOR ALL RECEPTACLES	.236 [6.00]
5	.1465 [3.721]		.276 [7.00]
6	.088 [2.23]		.216 [5.50]
7	.1665 [4.229]		.296 [7.52]

ZZ	NUMBER OF POSITIONS
09	9
11	11
15	15
21	21
25	25
31	31
41	41
51	51
69	69

X	PLATING
1	15u"/.38u GXT™
2	30u"/.76u GXT™

* NOTE 8
* * NOTE 9



EXAMPLE: 91921-31125LF
IS A CONAN® RECEPTACLE ASSEMBLY,
HAVING NO PEGS AND WITH A PICK AND PLACE CAP.
IT ALSO HAS GXT™ PLATING, IS .13 [3.2] HIGH AND 25
POSITIONS AND IS PACKAGED IN PRESSURE SEALED TAPE,
REEL AND LEAD FREE.

mot'l. code	surface	tolerance	projection	product family
ISO 1302	ISO 406	ISO 1101	ASME Y14.5M	CONAN®
tolerances unless otherwise specified	tolerances unless otherwise specified	tolerances unless otherwise specified	INCH/MM	CONAN® CONNECTOR ASSEMBLY
angles linear	.05/.30	.000E.10	scale 1:1	sheet 7 of 7
0±x°				91900
dr	Eric Huang	10/11/15		Product Customer Drawing
engr	Eric Huang	10/11/15		
chr				
qppd	Tim Yao	10/11/15		
sheet index	revision sheet			

Looking for pricing, stock, or lifecycle information?

Click below to explore more details on WIN SOURCE:

- [View 91931-31109LF on WIN SOURCE](#)
- [Amphenol FCI Information](#)

Optimize Your Supply Chain with WIN SOURCE Solutions

- ✓ Global Sourcing Solution
- ✓ Obsolete Management
- ✓ Cost Control Management
- ✓ Shortage Management
- ✓ Alternative Solution
- ✓ Excess Inventory Management