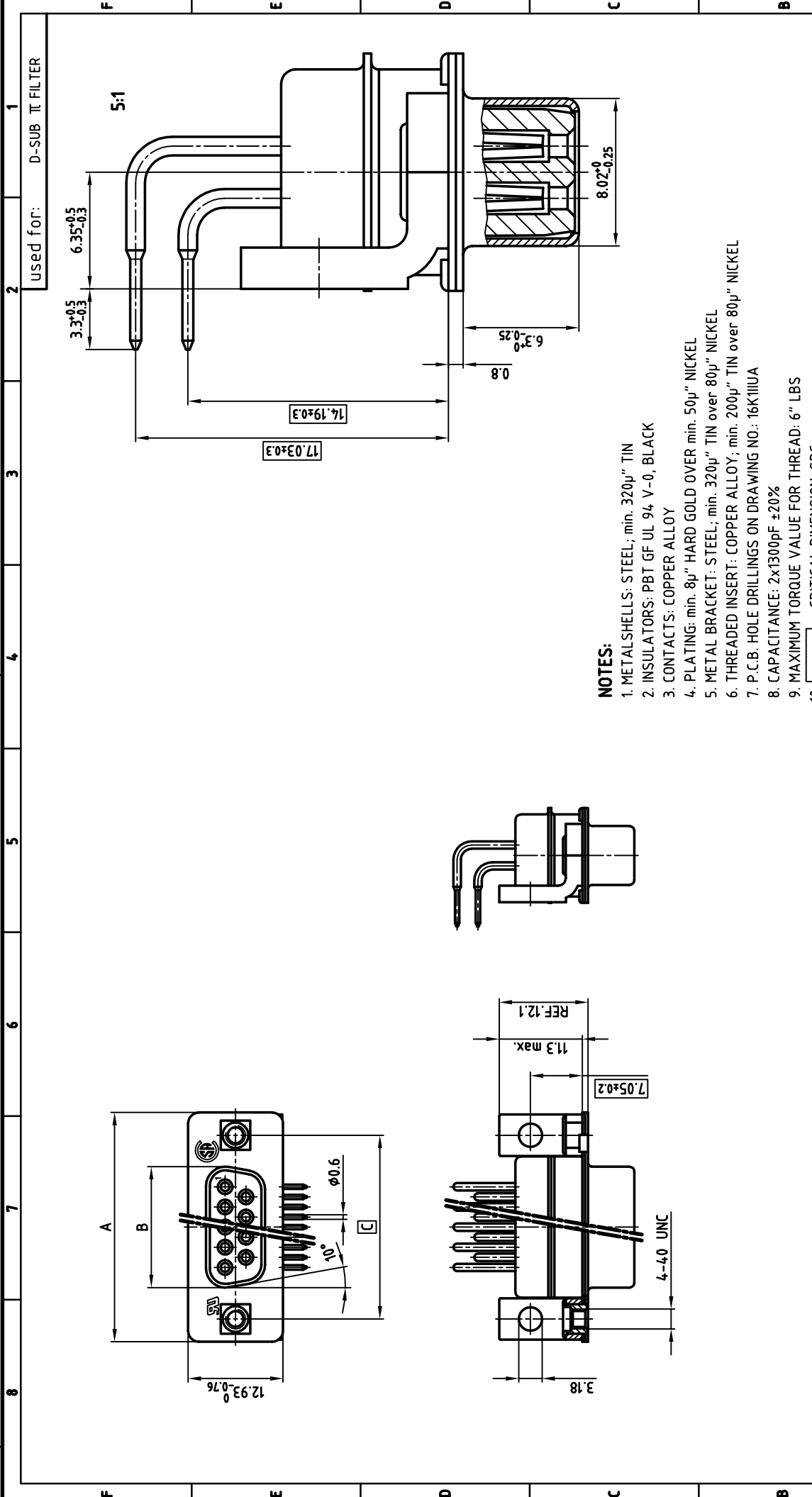




**THE DATASHEET OF  
242A26080X**





**NOTES:**

1. METALSHELLS: STEEL; min. 320µ" TIN
2. INSULATORS: PBT GF UL 94 V-0, BLACK
3. CONTACTS: COPPER ALLOY
4. PLATING: min. 8µ" HARD GOLD OVER min. 50µ" NICKEL
5. METAL BRACKET: STEEL; min. 320µ" TIN over 80µ" NICKEL
6. THREADED INSERT: COPPER ALLOY; min. 200µ" TIN over 80µ" NICKEL
7. P.C.B. HOLE DRILLINGS ON DRAWING NO.: 16K111UA
8. CAPACITANCE: 2x1300pF ±20%
9. MAXIMUM TORQUE VALUE FOR THREAD: 6" LBS
10.   = CRITICAL DIMENSION: SPC

used for: D-SUB TT FILTER

CONEC CORPORATION BRAMPTON, ONTARIO		tolerance		scale:	2:1 (5:1)
2001	date	name	material:	SEE NOTES	
drawn	09.04.	Pareil	title:	D-SUB TT FILTER FEMALE 90°	
appd.	09.04.	E. Mickenbecker	0.590inch 9-37pos.		
norm	DIN 41652		with threaded insert and metal bracket		
d-old			dwg no: AutoCAD 2000 DIN-A		
			3 sh:1/1		
			part no: SEE TABLE		

**CONEC**

24K1A106A



THIS DRAWING MAY NOT BE COPIED OR REPRODUCED IN ANY WAY, AND MAY NOT BE PASSED ON TO A THIRD PARTY WITHOUT WRITTEN PERMISSION.

OWNERSHIP AND COPYRIGHT OF CONEC GMBH DO NOT ALTER CAD DRAWING BY HAND

POS.	A	B	C	Part-NO.
9	31.19	16.46	25.00	242A26060X
15	39.52	24.79	33.30	242A26070X
25	53.42	38.50	47.04	242A26080X
37	69.70	54.96	63.50	242A26090X

## Looking for pricing, stock, or lifecycle information?

Click below to explore more details on WIN SOURCE:

-  [View 242A26080X on WIN SOURCE](#)
-  [Conec Information](#)

## Optimize Your Supply Chain with WIN SOURCE Solutions

-  Global Sourcing Solution
-  Obsolete Management
-  Cost Control Management
-  Shortage Management
-  Alternative Solution
-  Excess Inventory Management