

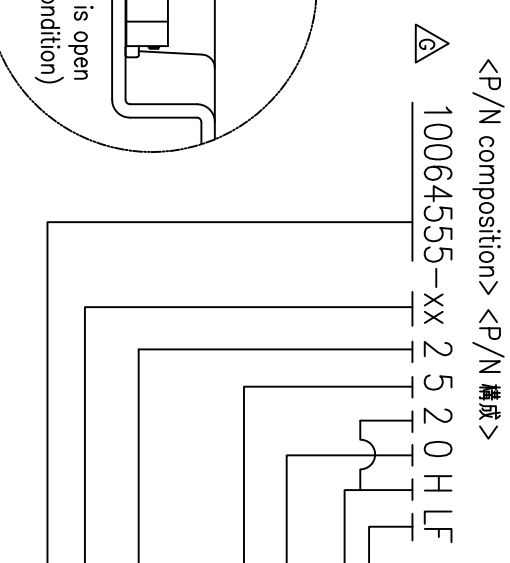
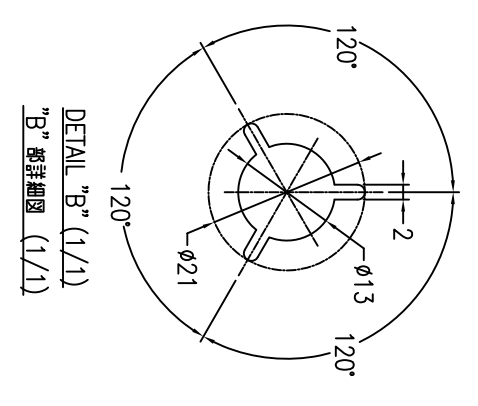
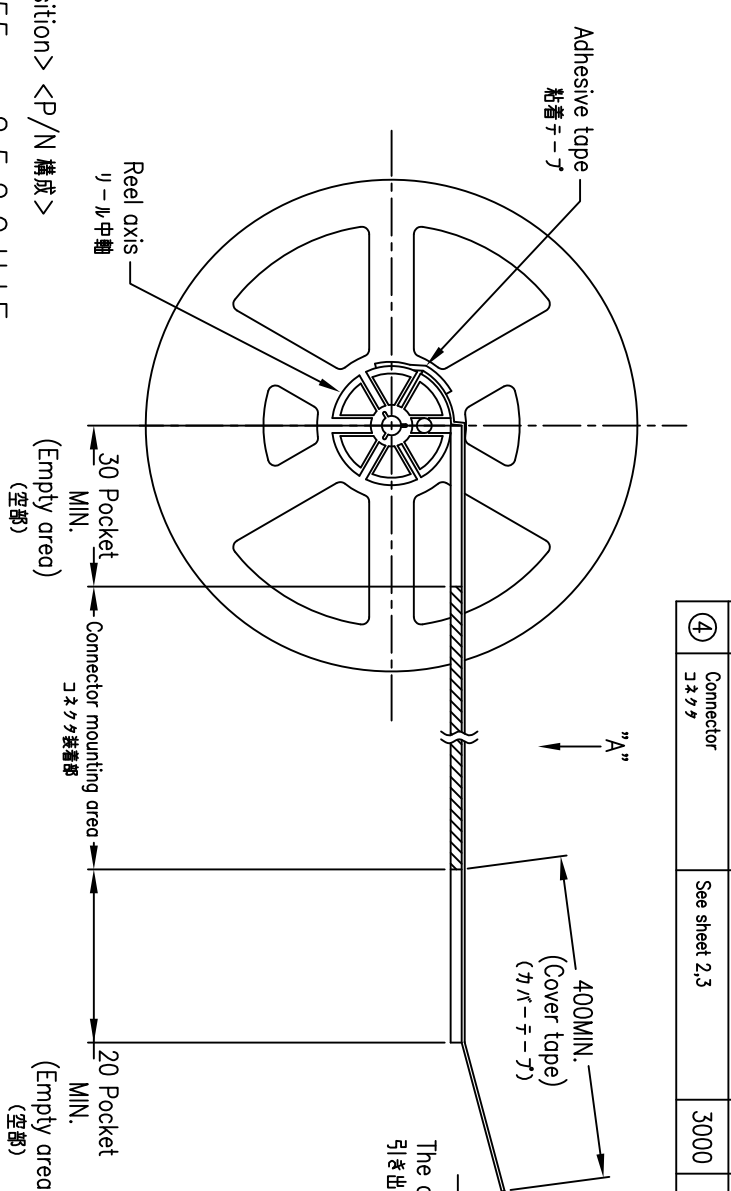
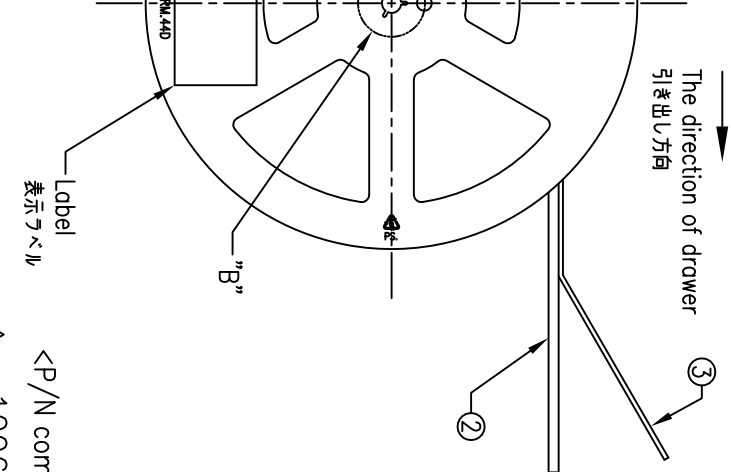


**THE DATASHEET OF
10064555-392210ELF**



PARTS TABLE 部品表

No.	Part name 部品名	Material 材質	QTY.	Note 備考
①	The reel for packaging 梱包用リール	Polystyrene ポリスチレン	1	Color : White, Electrification prevention processing 色 : 白、帯電防止処理品
②	Emboss tape エンボステープ	PP or PET	1	Electrification prevention processing 帯電防止処理品
③	Cover tape カバーテープ	Polyester ポリエステル	1	
④	Connector コネクタ	See sheet 2.3	3000	



- Lead Free
Mold material
Embossing tape package 0: 8mm PITCH
- 1E : Non-Halogen free
2H : Halogen free
- TYPES OF PRODUCT
- 1: SMT / WITH CABLE LOCK
 - 2: SMT / WITHOUT CABLE LOCK
 - 5: SMT / WITH CABLE LOCK, WITH ACT BOSS
- Contact Side 2: UPPER SIDE
- No. of position
- Series name

NOTE

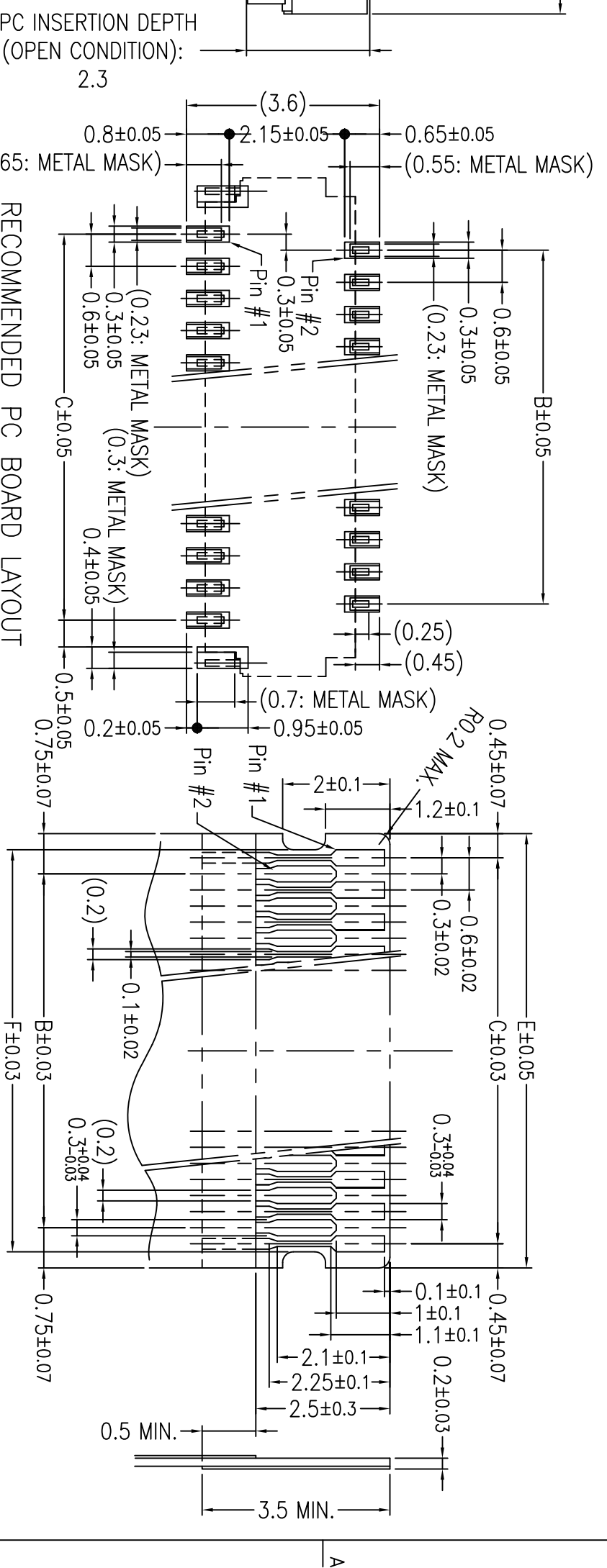
1. This article carries out the emboss tape package of the P/N10064555 series connector.
2. The shape and dimension of this article are based on JIS C 0806.
(Taping of electronic parts (Surface mounted device))

注記

1. 本品は P/N10064555シリーズをエンボステープ梱包したものである。
2. 本品の形状及び寸法規定は JIS C 0806 (電子部品のテープング (表面実装部品)) に準拠する。

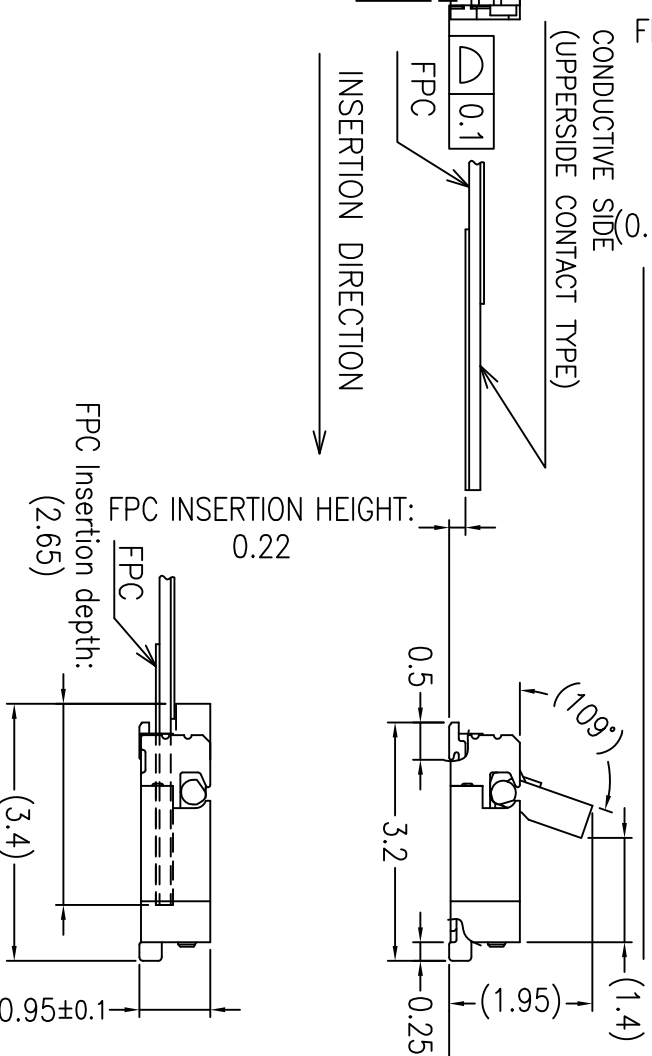
mat'l. code	SEE TABLE	Surface ISO 1302	Tolerance ISO 406 ISO 1101	projection	product family	title	dwg no	sheet 1 of 4	size				
ltr	ecgn no	dr	date	tolerances unless otherwise specified	angles	linear	0.XX/±0.3	MM	ASSEMBLY	0.3mm PITCH CONNECTOR FOR FPC	10064555	YLL-U Series	A3
A	J06-0368	Y.K	09/06/'06										
B	J07-0472	Y.K	2007-9-21										
C	J08-0064	Y.K	2008-2-12	0±.3*									
D	J08-0419	Y.K	2008-10-29	Dr									
E	J11-0067	Y.K	2011-03-16	ENGR									
F	J11-0284	Y.K	2011-12-15	CHR									
G	ELX-J-33301	Y.K	2019-04-19	APPD									
sheet index	revision	G	G	G	G								
	sheet	1	2	3	4								

VIEW "A" (N.S.)
左視 "A" (N.S.)



RECOMMENDED PC BOARD LAYOUT

RECOMMENDED FPC CONFIGURATION

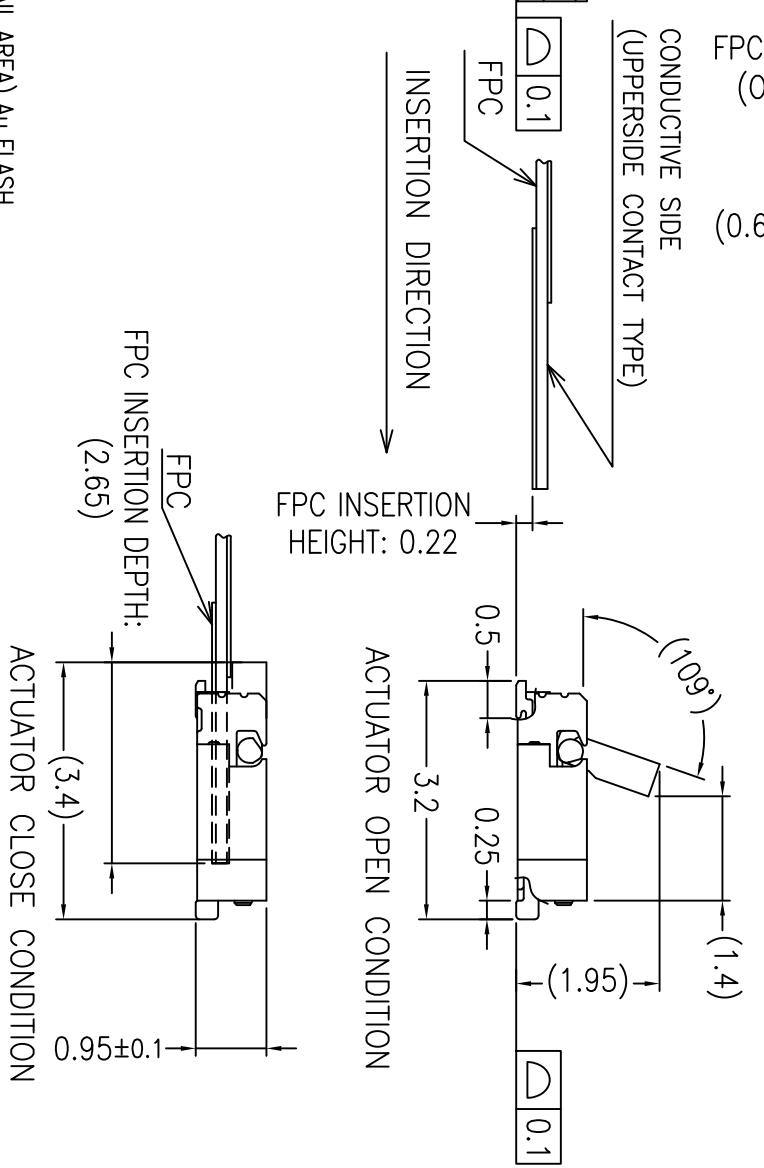
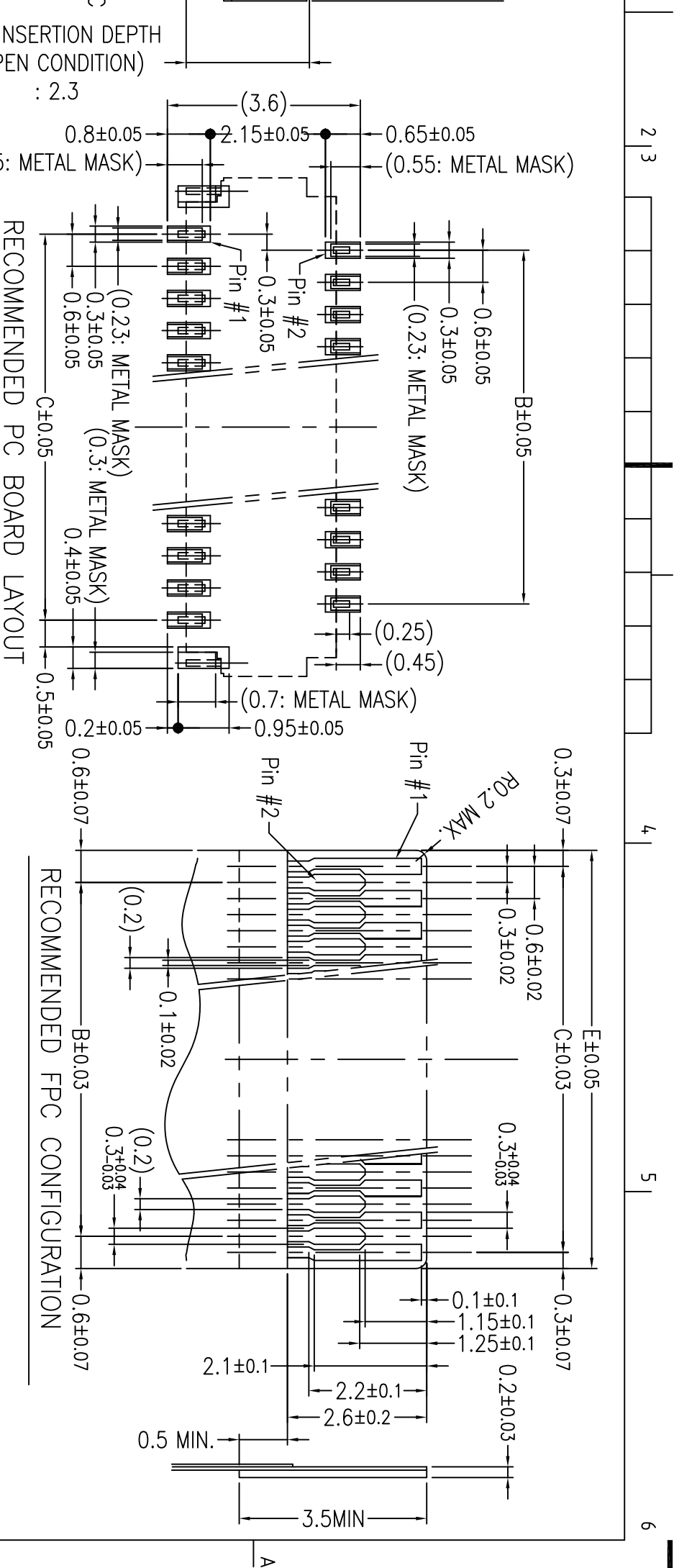


P/N	A	B	C	D	E	F
10064555-39211LF	13.5	10.8	11.4	13.0	12.3	11.7
10064555-39212HLF	13.5	10.8	11.4	13.0	12.3	11.7
10064555-35211LF	12.3	9.6	10.2	11.8	11.1	10.5
10064555-33211LF	11.7	9	9.6	11.2	10.5	9.9
10064555-31211LF	11.1	8.4	9	10.6	9.9	9.3
10064555-25211LF	9.3	6.6	7.2	8.8	8.1	7.5
10064555-21211LF	8.1	5.4	6.0	7.6	6.9	6.3
10064555-15211LF	6.3	3.6	4.2	5.8	5.1	4.5

ALL AREA) Au FLASH.

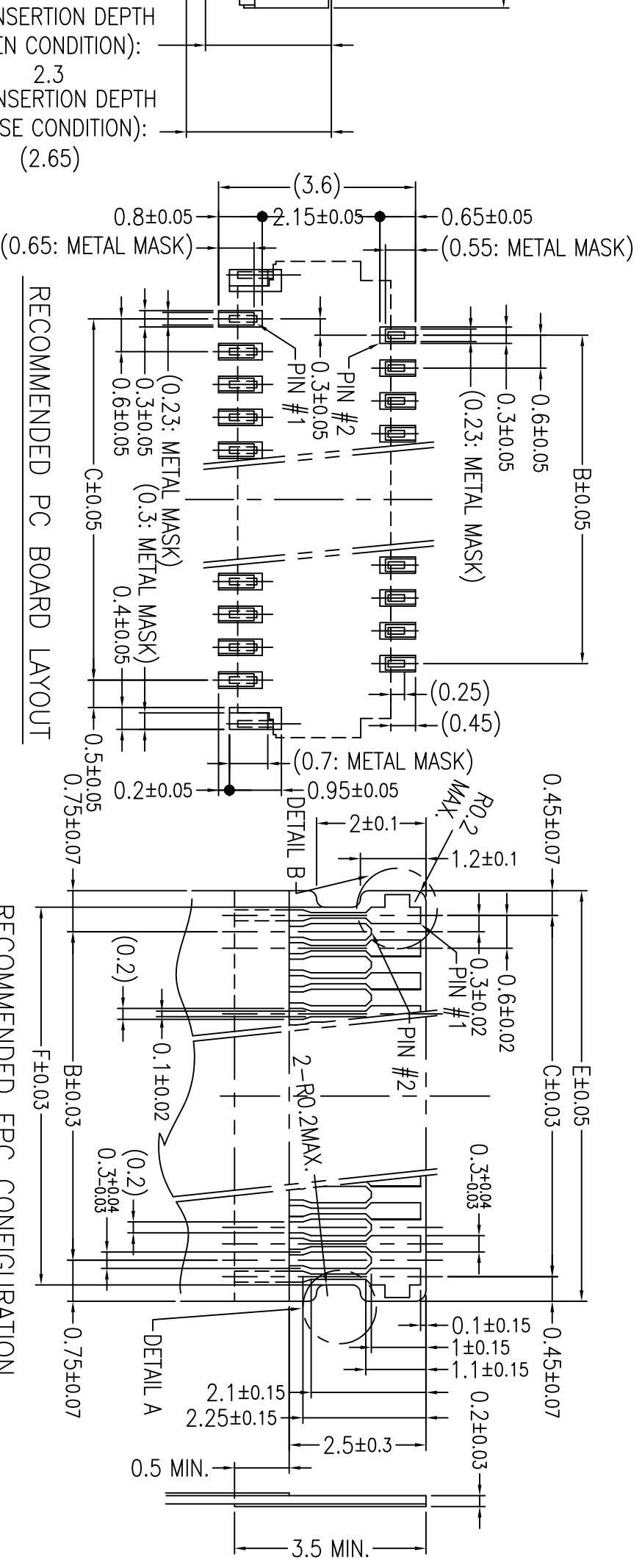
ACTUATOR CLOSE

mat'l. code		SEE TABLE		surface		tolerance		projection		product family	
ltr	ec'n no	dr	date	ISO 1302	ISO 406	ISO 1101	ISO 1101	projection	MM	title	product family
G	ECN-U-33301	Y.K	2019-04-19	tolerances unless otherwise specified						ASSEMBLY	FFC-FPC SYSTEMS
				angles	linear	O.X/±0.3	O.XX/±0.3			0.3mm PITCH CONNECTOR FOR FPC	
				linear	O.XXX/±0.3					YLL-U Series	
				dr	Y.KAMEDA	2019-04-19				dwg no	sheet 2 of 4
				engr	Y.KAMEDA	2019-04-19				10064555	A3
				chr	H.SUZUKI	2019-04-19				Product Customer Drawing	
				appd	N.SASAME	2019-04-19					

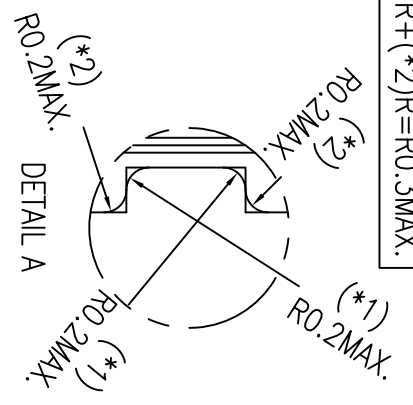
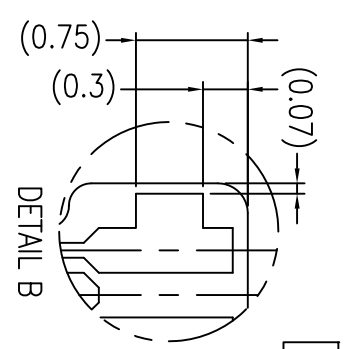
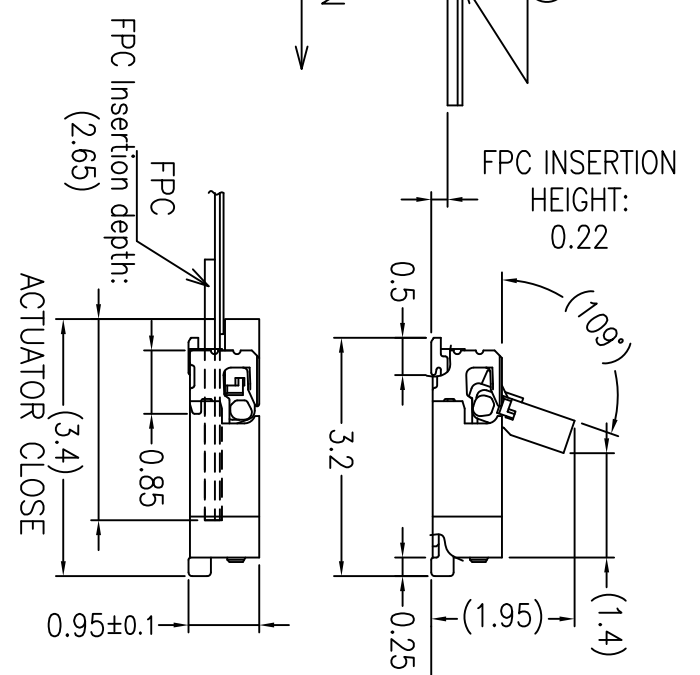
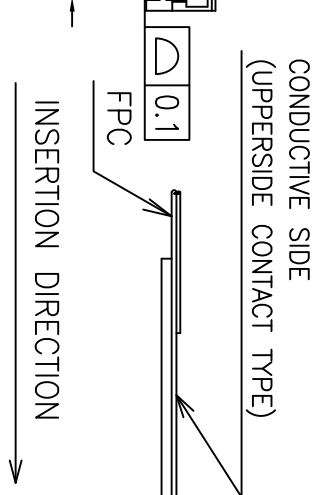


P/N	A	B	C	D	E
10064555-41221LF	14.1	11.4	12.0	13.6	12.6
10064555-39221LF	13.5	10.8	11.4	13.0	12.0
10064555-37221LF	12.9	10.2	10.8	12.4	11.4
10064555-33221LF	11.7	9	9.6	11.2	10.2
10064555-31221LF	11.1	8.4	9	10.6	9.6
10064555-27221LF	9.9	7.2	7.8	9.4	8.4
10064555-25221LF	9.3	6.6	7.2	8.8	7.8
10064555-23221LF	8.7	6	6.6	8.2	7.2
10064555-21221LF	8.1	5.4	6.0	7.6	6.6
10064555-15222HLF	6.3	3.6	4.2	5.8	4.8

mat'l. code		surface		tolerance		projection		product family	
SEE TABLE		ISO 1302		ISO 406 ISO 1101		MM		FFC-FPC SYSTEMS	
ltr	ecn no	dr	date	angles	linear	0.X/±0.3	MM	ASSEMBLY	
G	ECN-U-33301	Y.K	2019-04-19	0±3°	0.XX/±0.3	0.XXX/±0.3	MM	0.3mm PITCH CONNECTOR FOR FPC	
								YLL-U Series	
								title	
								ASSEMBLY	
								product family	
								FFC-FPC SYSTEMS	
								title	
								ASSEMBLY	
								product family	
								FFC-FPC SYSTEMS	
								title	
								ASSEMBLY	
								product family	
								FFC-FPC SYSTEMS	
								title	
								ASSEMBLY	
								product family	
								FFC-FPC SYSTEMS	
								title	
								ASSEMBLY	
								product family	
								FFC-FPC SYSTEMS	
								title	
								ASSEMBLY	
								product family	
								FFC-FPC SYSTEMS	
								title	
								ASSEMBLY	
								product family	
								FFC-FPC SYSTEMS	
								title	
								ASSEMBLY	
								product family	
								FFC-FPC SYSTEMS	
								title	
								ASSEMBLY	
								product family	
								FFC-FPC SYSTEMS	
								title	
								ASSEMBLY	
								product family	
								FFC-FPC SYSTEMS	
								title	
								ASSEMBLY	
								product family	
								FFC-FPC SYSTEMS	
								title	
								ASSEMBLY	
								product family	
								FFC-FPC SYSTEMS	
								title	
								ASSEMBLY	
								product family	
								FFC-FPC SYSTEMS	
								title	
								ASSEMBLY	
								product family	
								FFC-FPC SYSTEMS	
								title	
								ASSEMBLY	
								product family	
								FFC-FPC SYSTEMS	
								title	
								ASSEMBLY	
								product family	
								FFC-FPC SYSTEMS	
								title	
								ASSEMBLY	
								product family	
								FFC-FPC SYSTEMS	
								title	
								ASSEMBLY	
								product family	
								FFC-FPC SYSTEMS	
								title	
								ASSEMBLY	
								product family	
								FFC-FPC SYSTEMS	
								title	
								ASSEMBLY	
								product family	
								FFC-FPC SYSTEMS	
								title	
								ASSEMBLY	
								product family	
								FFC-FPC SYSTEMS	
								title	
								ASSEMBLY	
								product family	
								FFC-FPC SYSTEMS	
								title	
								ASSEMBLY	
								product family	
								FFC-FPC SYSTEMS	
								title	
								ASSEMBLY	
								product family	
								FFC-FPC SYSTEMS	
								title	
								ASSEMBLY	
								product family	
								FFC-FPC SYSTEMS	
								title	
								ASSEMBLY	
								product family	
								FFC-FPC SYSTEMS	
								title	
								ASSEMBLY	
								product family	
								FFC-FPC SYSTEMS	
								title	
								ASSEMBLY	
								product family	
								FFC-FPC SYSTEMS	
								title	
								ASSEMBLY	
								product family	
								FFC-FPC SYSTEMS	
								title	
								ASSEMBLY	
								product family	
								FFC-FPC SYSTEMS	
								title	
								ASSEMBLY	
								product family	
								FFC-FPC SYSTEMS	
								title	
								ASSEMBLY	
								product family	
								FFC-FPC SYSTEMS	
								title	
								ASSEMBLY	
								product family	
								FFC-FPC SYSTEMS	
								title	
								ASSEMBLY	
								product family	
								FFC-FPC SYSTEMS	
								title	
								ASSEMBLY	
								product family	
								FFC-FPC SYSTEMS	
								title	
								ASSEMBLY	
								product family	
								FFC-FPC SYSTEMS	
								title	
								ASSEMBLY	
								product family	
								FFC-FPC SYSTEMS	
								title	
								ASSEMBLY	
								product family	
								FFC-FPC SYSTEMS	
								title	
								ASSEMBLY	
								product family	
								FFC-FPC SYSTEMS	
								title	
								ASSEMBLY	
								product family	
								FFC-FPC SYSTEMS	
								title	
								ASSEMBLY	
								product family	
								FFC-FPC SYSTEMS	
								title	
								ASSEMBLY	
								product family	
								FFC-FPC SYSTEMS	
								title	
								ASSEMBLY	
								product family	
								FFC-FPC SYSTEMS	
								title	
								ASSEMBLY	
								product family	
								FFC-FPC SYSTEMS	
								title	
								ASSEMBLY	
								product family	
								FFC-FPC SYSTEMS	
								title	
								ASSEMBLY	
								product family	
								FFC-FPC SYSTEMS	
								title	
								ASSEMBLY	
								product family	
								FFC-FPC SYSTEMS	
								title	
								ASSEMBLY	
								product family	
								FFC-FPC SYSTEMS	
								title	
								ASSEMBLY	
								product family	
								FFC-FPC SYSTEMS	
								title	
								ASSEMBLY	
								product family	
								FFC-FPC SYSTEMS	
								title	
								ASSEMBLY	
								product family	
</									



FPC INSERTION DEPTH
(OPEN CONDITION):
2.3
FPC INSERTION DEPTH
(CLOSE CONDITION):
(2.65)



(*1)R+(*2)R=R0.3MAX.
(*2)R0.2MAX.
(*1)R0.2MAX.

10064555-27252HLF	9.9	7.2	7.8	9.4	8.7	8.1
10064555-23252HLF	8.7	6.0	6.6	8.2	7.5	6.9
10064555-21252HLF	8.1	5.4	6.0	7.6	6.9	6.3
10064555-17252HLF	6.9	4.2	4.8	6.4	5.7	5.1

mat'l. code

ISO 1302

ISO 406

ISO 1101

projection

MM

scale 10:1

product family

HPL538 FLEX0.3

surface	tolerance	projection	product family
ISO 1302	ISO 406	ISO 1101	HPL538 FLEX0.3
tolerances unless otherwise specified			
linear	0.X/±0.3	MM	ASSEMBLY
angles	0.XXX/±0.3		0.3mm PITCH CONNECTOR FOR FPC
dr	Y.KAMEDA	2019-04-19	YLL-U Series
engr	Y.KAMEDA	2019-04-19	
chr	H.SUZUKI	2019-04-19	
appd	N.SASAME	2019-04-19	

AREA) Au FLASH.

22 Series(YLL-DOWN CONTACT TYPE).
regulations as described in GS-47-0004.

PDS: Rev: G

STATUS: Released

Printed: Apr 19, 2019

sheet index

revision sheet

sheet 4 of 4

size A3

CUSTOMER Drawing

Looking for pricing, stock, or lifecycle information?

Click below to explore more details on WIN SOURCE:

[View 10064555-392210ELF on WIN SOURCE](#)

[Amphenol FCI Information](#)

Optimize Your Supply Chain with WIN SOURCE Solutions

- ✓ Global Sourcing Solution
- ✓ Obsolete Management
- ✓ Cost Control Management
- ✓ Shortage Management
- ✓ Alternative Solution
- ✓ Excess Inventory Management