

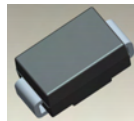
100A BIDIRECTIONAL SURFACE MOUNT THYRISTOR SURGE PROTECTIVE DEVICE

Features

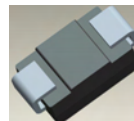
- 100A Peak Pulse Current @ 10/1000µs
- 400A Peak Pulse Current @ 8/20µs
- 58 - 320V Stand-Off Voltages
- Oxide-Glass Passivated Junction
- Bidirectional Protection In a Single Device
- High Off-State Impedance and Low On-State Voltage
- Helps Equipment Meet GR-1089-CORE, IEC 61000-4-5, FCC Part 68, ITU-T K.20/K.21, and UL497B
- UL Listed Under Recognized Component Index, File Number 156346
- **Lead Free Finish/RoHS Compliant (Note 1)**
- **Green Molding Compound (No Halogen and Antimony) (Note 2)**

Mechanical Data

- Case: SMB
- Case Material: Molded Plastic. UL Flammability Classification Rating 94V-0
- Moisture Sensitivity: Level 1 per J-STD-020
- Terminals: Lead Free Plating (Matte Tin Finish). Solderable per MIL-STD-202, Method 208
- Polarity: None; Bidirectional Devices Have No Polarity Indicator
- Weight: 0.093 grams (approximate)



Top View



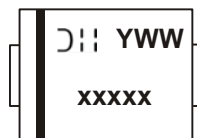
Bottom View

Ordering Information (Note 3)

| Part Number | Case | Packaging |
|--------------|------|------------------|
| TB0640H-13-F | SMB | 3000/Tape & Reel |
| TB0720H-13-F | SMB | 3000/Tape & Reel |
| TB0900H-13-F | SMB | 3000/Tape & Reel |
| TB1100H-13-F | SMB | 3000/Tape & Reel |
| TB1300H-13-F | SMB | 3000/Tape & Reel |
| TB1500H-13-F | SMB | 3000/Tape & Reel |
| TB1800H-13-F | SMB | 3000/Tape & Reel |
| TB2300H-13-F | SMB | 3000/Tape & Reel |
| TB2600H-13-F | SMB | 3000/Tape & Reel |
| TB3100H-13-F | SMB | 3000/Tape & Reel |
| TB3500H-13-F | SMB | 3000/Tape & Reel |

- Notes:
1. EU Directive 2002/95/EC (RoHS). All applicable RoHS exemptions applied, see EU Directive 2002/95/EC Annex Notes.
 2. Product manufactured with Data Code 0924 (week 24, 2009) and newer are built with Green Molding Compound.
 3. For packaging details, go to our website at <http://www.diodes.com>.

Marking Information



- xxxxx = Product type marking code (See table on page 2)
- DII = Manufacturers' code marking
- YWW = Date code marking
- Y = Last digit of year (ex: 6 for 2006)
- WW = Week code (01 to 53)

Maximum Ratings @ $T_A = 25^\circ\text{C}$ unless otherwise specified

Single phase, half wave, 60Hz, resistive or inductive load.
 For capacitance load, derate current by 20%.

| Characteristic | Symbol | Value | Unit |
|----------------------------------------------------------------|----------------------------|-------|---------------------|
| Non-Repetitive Peak Impulse Current @10/1000us | I_{pp} | 100 | A |
| Non-Repetitive Peak On-State Current @8.3ms (one-half cycle) | I_{TSM} | 50 | A |
| Typical Positive Temperature Coefficient for Breakdown Voltage | $\Delta V_{BR}/\Delta T_J$ | 0.1 | %/ $^\circ\text{C}$ |

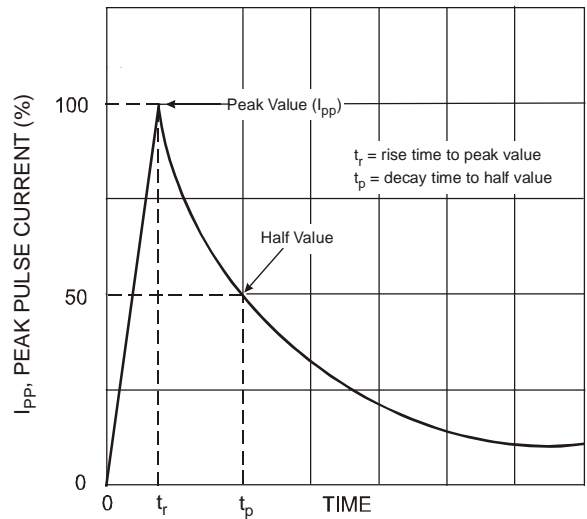
Thermal Characteristics

| Characteristic | Symbol | Value | Unit |
|-----------------------------------------|-----------------|-------------|---------------------------|
| Thermal Resistance, Junction to Lead | $R_{\theta JL}$ | 20 | $^\circ\text{C}/\text{W}$ |
| Thermal Resistance, Junction to Ambient | $R_{\theta JA}$ | 100 | $^\circ\text{C}/\text{W}$ |
| Junction Temperature Range | T_J | -40 to +150 | $^\circ\text{C}$ |
| Storage Temperature Range | T_{STG} | -55 to +150 | $^\circ\text{C}$ |

Maximum Rated Surge Waveform

| Waveform | Standard | I_{pp} (A) |
|-------------------------------|------------------|--------------|
| 2/10 μs | GR-1089-CORE | 500 |
| 8/20 μs | IEC 61000-4-5 | 400 |
| 10/160 μs | FCC Part 68 | 250 |
| 10/700 μs (Note 4) | ITU-T, K.20/K.21 | 200 |
| 10/560 μs | FCC Part 68 | 160 |
| 10/1000 μs | GR-1089-CORE | 100 |

Notes: 4. Applied 6kV, 10/700 μs waveform

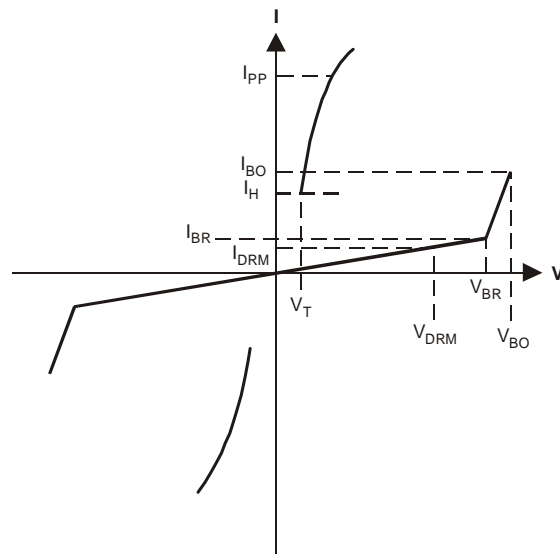


Electrical Characteristics @T_A = 25°C unless otherwise specified

| Part Number | Maximum Rated Repetitive Off-State Voltage | Maximum Off-State Leakage Current @ V _{DRM} | Maximum Breakover Voltage | Maximum On-State Voltage @ I _T = 1A | Breakover Current I _{BO} | | Holding Current I _H | | Typical Off-State Capacitance | Marking Code |
|-------------|--------------------------------------------|------------------------------------------------------|---------------------------|------------------------------------------------|-----------------------------------|----------|--------------------------------|----------|-------------------------------|--------------|
| | V _{DRM} (V) | I _{DRM} (µA) | V _{BO} (V) | V _T (V) | Min (mA) | Max (mA) | Min (mA) | Max (mA) | C _O (pF) | |
| TB0640H | 58 | 5 | 77 | 3.5 | 50 | 800 | 150 | 800 | 200 | T064H |
| TB0720H | 65 | 5 | 88 | 3.5 | 50 | 800 | 150 | 800 | 200 | T072H |
| TB0900H | 75 | 5 | 98 | 3.5 | 50 | 800 | 150 | 800 | 200 | T090H |
| TB1100H | 90 | 5 | 130 | 3.5 | 50 | 800 | 150 | 800 | 120 | T110H |
| TB1300H | 120 | 5 | 160 | 3.5 | 50 | 800 | 150 | 800 | 120 | T130H |
| TB1500H | 140 | 5 | 180 | 3.5 | 50 | 800 | 150 | 800 | 120 | T150H |
| TB1800H | 160 | 5 | 220 | 3.5 | 50 | 800 | 150 | 800 | 120 | T180H |
| TB2300H | 190 | 5 | 265 | 3.5 | 50 | 800 | 150 | 800 | 80 | T230H |
| TB2600H | 220 | 5 | 300 | 3.5 | 50 | 800 | 150 | 800 | 80 | T260H |
| TB3100H | 275 | 5 | 350 | 3.5 | 50 | 800 | 150 | 800 | 80 | T310H |
| TB3500H | 320 | 5 | 400 | 3.5 | 50 | 800 | 150 | 800 | 80 | T350H |

| Symbol | Parameter |
|------------------|--------------------------------------|
| V _{DRM} | Stand-off Voltage |
| I _{DRM} | Leakage current at stand-off voltage |
| V _{BR} | Breakdown voltage |
| I _{BR} | Breakdown current |
| V _{BO} | Breakover voltage |
| I _{BO} | Breakover current |
| I _H | Holding current (Note 5) |
| V _T | On state voltage |
| I _{PP} | Peak pulse current |
| C _O | Off-state capacitance (Note 6) |

- Notes:
- I_H > (V_L/R_L) If this criterion is not obeyed, the TSPD triggers but does not return correctly to high-resistance state. The surge recovery time does not exceed 30ms.
 - Off-state capacitance measured at f = 1.0MHz, 1.0V_{RMS} signal, V_R = 2V_{DC} bias.



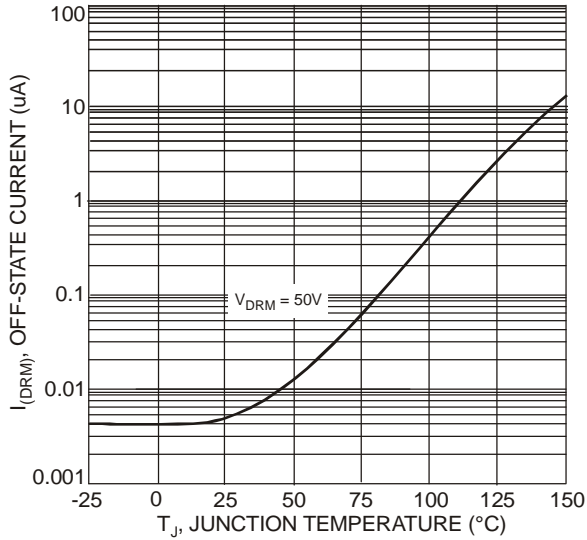


Fig. 1 Off-State Current vs. Junction Temperature

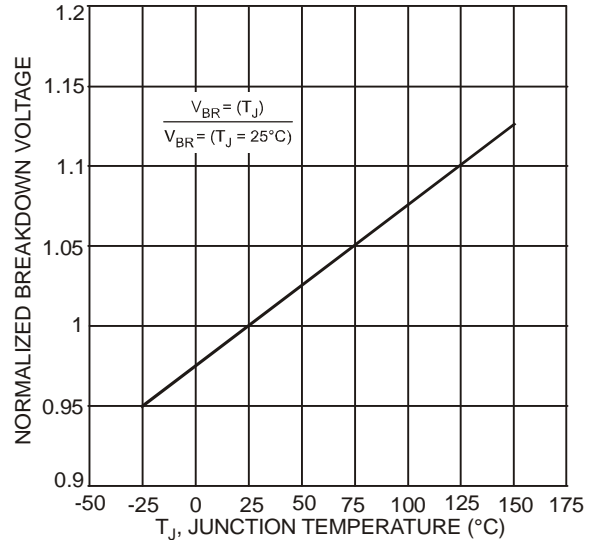


Fig. 2 Relative Variation of Breakdown Voltage vs. Junction Temperature

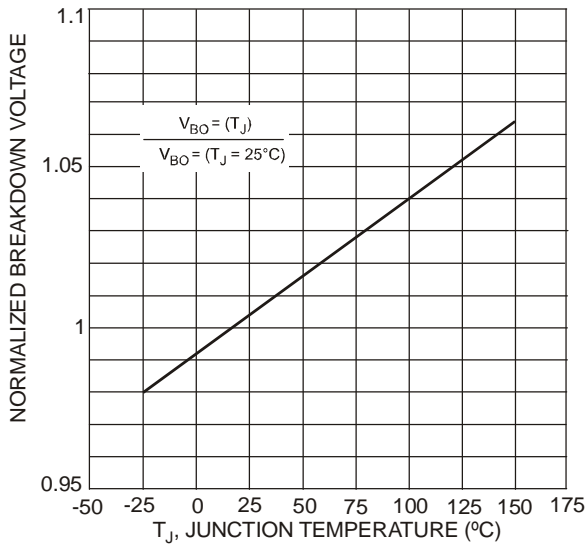


Fig. 3 Relative Variation of Breakover Voltage vs. Junction Temperature

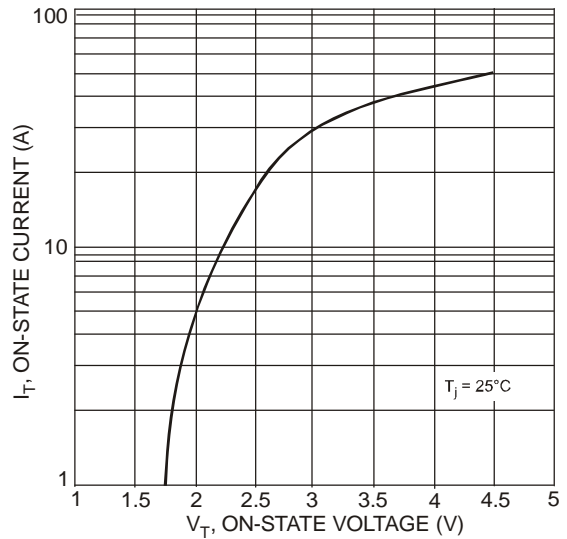


Fig. 4 On-State Current vs. On-State Voltage

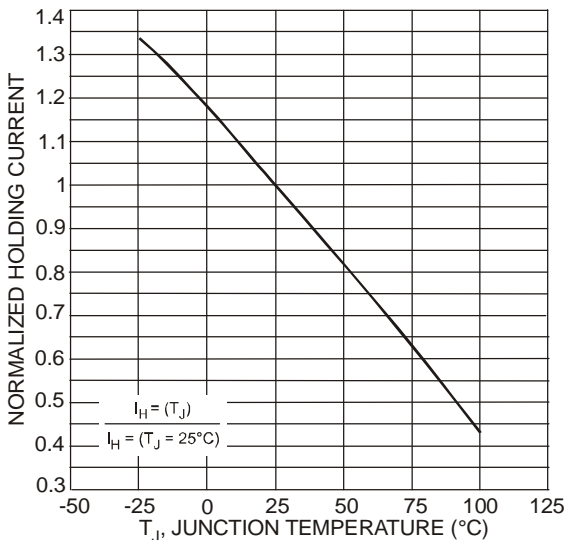


Fig. 5 Relative Variation of Holding Current vs. Junction Temperature

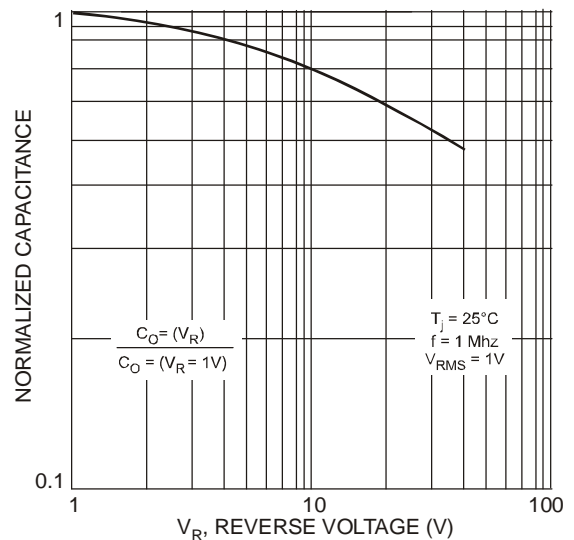
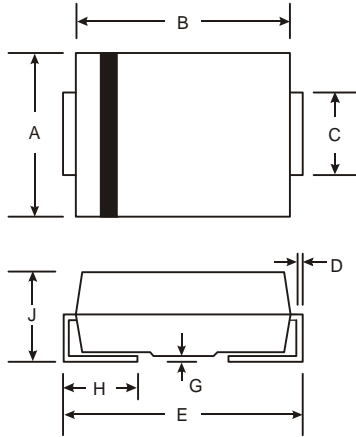


Fig. 6 Relative Variation of Junction Capacitance vs. Reverse Voltage Bias

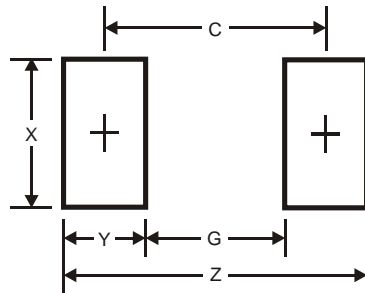
Package Outline Dimensions



| SMB | | |
|-----|------|------|
| Dim | Min | Max |
| A | 3.30 | 3.94 |
| B | 4.06 | 4.57 |
| C | 1.96 | 2.21 |
| D | 0.15 | 0.31 |
| E | 5.00 | 5.59 |
| G | 0.05 | 0.20 |
| H | 0.76 | 1.52 |
| J | 2.00 | 2.50 |

All Dimensions in mm

Suggested Pad Layout



| Dimensions | Value (in mm) |
|------------|---------------|
| Z | 6.8 |
| G | 1.8 |
| X | 2.3 |
| Y | 2.5 |
| C | 4.3 |

IMPORTANT NOTICE

DIODES INCORPORATED MAKES NO WARRANTY OF ANY KIND, EXPRESS OR IMPLIED, WITH REGARDS TO THIS DOCUMENT, INCLUDING, BUT NOT LIMITED TO, THE IMPLIED WARRANTIES OF MERCHANTABILITY AND FITNESS FOR A PARTICULAR PURPOSE (AND THEIR EQUIVALENTS UNDER THE LAWS OF ANY JURISDICTION).

Diodes Incorporated and its subsidiaries reserve the right to make modifications, enhancements, improvements, corrections or other changes without further notice to this document and any product described herein. Diodes Incorporated does not assume any liability arising out of the application or use of this document or any product described herein; neither does Diodes Incorporated convey any license under its patent or trademark rights, nor the rights of others. Any Customer or user of this document or products described herein in such applications shall assume all risks of such use and will agree to hold Diodes Incorporated and all the companies whose products are represented on Diodes Incorporated website, harmless against all damages.

Diodes Incorporated does not warrant or accept any liability whatsoever in respect of any products purchased through unauthorized sales channel. Should Customers purchase or use Diodes Incorporated products for any unintended or unauthorized application, Customers shall indemnify and hold Diodes Incorporated and its representatives harmless against all claims, damages, expenses, and attorney fees arising out of, directly or indirectly, any claim of personal injury or death associated with such unintended or unauthorized application.

Products described herein may be covered by one or more United States, international or foreign patents pending. Product names and markings noted herein may also be covered by one or more United States, international or foreign trademarks.

LIFE SUPPORT

Diodes Incorporated products are specifically not authorized for use as critical components in life support devices or systems without the express written approval of the Chief Executive Officer of Diodes Incorporated. As used herein:

A. Life support devices or systems are devices or systems which:

1. are intended to implant into the body, or
2. support or sustain life and whose failure to perform when properly used in accordance with instructions for use provided in the labeling can be reasonably expected to result in significant injury to the user.

B. A critical component is any component in a life support device or system whose failure to perform can be reasonably expected to cause the failure of the life support device or to affect its safety or effectiveness.

Customers represent that they have all necessary expertise in the safety and regulatory ramifications of their life support devices or systems, and acknowledge and agree that they are solely responsible for all legal, regulatory and safety-related requirements concerning their products and any use of Diodes Incorporated products in such safety-critical, life support devices or systems, notwithstanding any devices- or systems-related information or support that may be provided by Diodes Incorporated. Further, Customers must fully indemnify Diodes Incorporated and its representatives against any damages arising out of the use of Diodes Incorporated products in such safety-critical, life support devices or systems.

Copyright © 2011, Diodes Incorporated

www.diodes.com

Looking for pricing, stock, or lifecycle information?

Click below to explore more details on WIN SOURCE:

- [⊖ View TB1300H-13-F on WIN SOURCE](#)
- [⊖ Diodes Incorporated Information](#)

Optimize Your Supply Chain with WIN SOURCE Solutions

- ✓ Global Sourcing Solution
- ✓ Obsolete Management
- ✓ Cost Control Management
- ✓ Shortage Management
- ✓ Alternative Solution
- ✓ Excess Inventory Management