



**THE DATASHEET OF**  
**5975311407F**



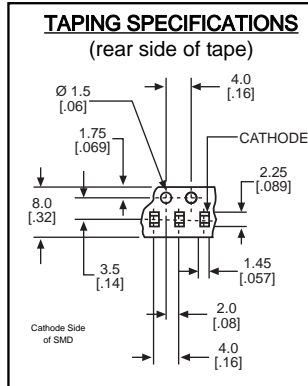
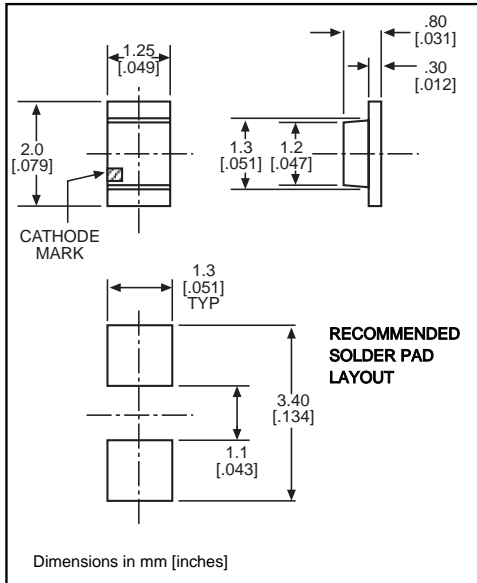


# Surface Mount LED 0805 Type Package High Intensity LEDs



597-3xxx-4xx  
597-5x11-4xx  
597-5202-4xx

1



**\*ORDERING INFORMATION**

**597-3xxx-4xx**

packaging option →

02	20 pieces on tape
07	7" reel, 4000 pcs/reel

PART NO.*	COLOR
597-3003-4xx	AllnGaP Red
597-3212-4xx	Orange
597-3222-4xx	Yellow
597-5111-4xx	Red
597-5202-4xx	Orange
597-5311-4xx	Green
597-5411-4xx	Yellow

### Features

- Very bright light output
- Highly efficient AllnGaP die
- Compatible with automatic placement equipment
- Compatible with infrared reflow processes
- Packaged on 8mm tape, 7" reels (meets EIA-481-1 standard)
- Compatible with Dialight's Optopipe™ Series light pipes

ABSOLUTE MAXIMUM RATINGS (T <sub>A</sub> =25°C)	AllnGaP Red	Orange	Yellow	Red	Orange	Green	Yellow
	-3003	-3212	-3222	-5111	-5202	-5311	-5411
Power Dissipation (mW)	81	81	81	57.5	70	70	70
Forward Current (mA)	30	30	30	25	25	25	25
Derating (mA/°C) From 25°C	.43	.43	.43	.36	.36	.36	.36
Peak Current (mA) <i>Pulse width = 1 μs</i>	100	100	100	60	60	60	60
Operating Temperature (°C)	-40/+85	-40/+85	-40/+85	-30/+85	-30/+85	-30/+85	-30/+85
Storage Temperature (°C)	-40/+100	-40/+100	-40/+100	-40/+100	-40/+100	-40/+100	-40/+100
Soldering Profile	280°C peak 3 seconds			240°C peak 5 seconds			

Solder Adherence per MIL-STD-202E, Method 208C

OPERATING CHARACTERISTICS (T <sub>A</sub> =25°C)		AllnGaP Red	Orange	Yellow	Red	Orange	Green	Yellow
		-3003	-3212	-3222	-5111	-5202	-5311	-5411
Luminous Intensity (mcd)	Min.	16	16	16	7	2.2	3.8	7
	Typical I <sub>F</sub> =20mA	50	65	65	11.7	3.7	6.4	11.7
Peak Wavelength (nm) λ Peak	Typical	630	609	594	660	605	560	570
Viewing Angle (2θ <sup>1/2</sup> )	Typical	156°	156°	156°	140°	140°	140°	140°
Forward Voltage (V) I <sub>F</sub> =20mA	Typical	1.9	1.9	1.9	1.7	2.2	2.1	2.1
	Max.	2.4	2.4	2.4	2.3	2.8	2.8	2.8
Reverse Current (μA) (V <sub>R</sub> = 5V)	Max	100	100	100	100	100	100	100

θ<sub>1/2</sub> is the off axis angle at which the luminous intensity is half the axial luminous intensity




## Looking for pricing, stock, or lifecycle information?

Click below to explore more details on WIN SOURCE:

 [View 5975311407F on WIN SOURCE](#)

 [Dialight Information](#)

## Optimize Your Supply Chain with WIN SOURCE Solutions

-  Global Sourcing Solution
-  Obsolete Management
-  Cost Control Management
-  Shortage Management
-  Alternative Solution
-  Excess Inventory Management