



**THE DATASHEET OF
CG-PG21-1-BK**

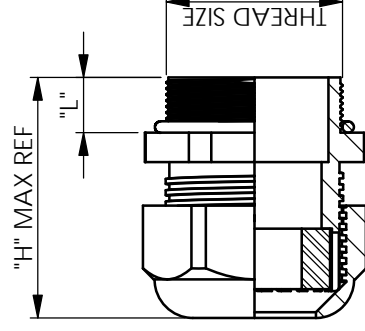
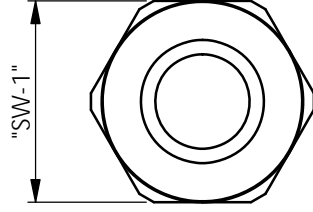


CPA[®] US #E336396

PART NUMBER	PART NUMBER COLOUR: BLACK RAL 9005 SPECIAL ORDER	THREAD SIZE	CABLE DIAMETER		SUGGESTED CLEARANCE HOLE FOR NON THREADED MOUNTING	"L" ±0.5[.020]	"SW-1" ±0.5[.020]	"H" MAX REF	INSTA TOR
			MIN Ø	MAX Ø					
CG-PG7-1	CG-PG7-1-BK	PG7	2[.079]	5[.197]	12.7[.500]		15[.591]	30.5[1.201]	
CG-PG7-2	CG-PG7-2-BK		3[.118]	6.5[.256]					
CG-PG9-1	CG-PG9-1-BK	PG9	2[.079]	6[.236]	15.4[.606]	8[.315]	19[.748]	34[1.339]	
CG-PG9-2	CG-PG9-2-BK		4[.157]	8[.315]					
CG-PG11-1	CG-PG11-1-BK	PG11	3[.118]	7[.276]	18.8[.740]		22[.866]	37[1.457]	
CG-PG11-2	CG-PG11-2-BK		5[.197]	10[.394]					
CG-PG13.5-1	CG-PG13.5-1-BK	PG13.5	6[.236]	12[.472]	20.7[.815]	9[.354]	24[.945]	39[1.535]	
CG-PG16-1	CG-PG16-1-BK	PG16	10[.394]	14[.551]	22.8[.898]	10[.394]	27[1.063]	42.5[1.673]	
CG-PG21-1	CG-PG21-1-BK	PG21	9[.236]	16[.630]	28.6[1.126]		33[1.299]	47.5[1.870]	
CG-PG21-2	CG-PG21-2-BK		13[.512]	18[.709]					
CG-PG29-1	CG-PG29-1-BK	PG29	12[.472]	20[.787]	37.4[1.472]	11[.433]	42[1.654]	53[2.087]	
CG-PG36-1	CG-PG36-1-BK	PG36	20[.787]	26[1.024]	47.5[1.870]	13[.512]	53[2.087]	61[2.402]	
CG-PG36-2	CG-PG36-2-BK		22[.866]	32[1.260]					

O RING INCLUDED WITH THREADS PG29 AND PG36

**TESTED WITH SPECIFIED TEST MANDRELS ACCORDING DIN EN 50262, CHAPTER 5.7. DEPENDING ON THE CABLE CONSTRUCTION DIFFERENCES ARE POSSIBLE.



NOTES:

TEMPERATURE RANGE -20 °C TO +100 °C

PROTECTION GRADE IP68 - 5 BAR

INFOR	RICH	MATERIA	DESCRIP	DRG No	DRN
REPR	WWW.F				MT

Looking for pricing, stock, or lifecycle information?

Click below to explore more details on WIN SOURCE:

- ⊖ [View CG-PG21-1-BK on WIN SOURCE](#)
- ⊖ [Essentra Components Information](#)

Optimize Your Supply Chain with WIN SOURCE Solutions

- ✓ Global Sourcing Solution
- ✓ Obsolete Management
- ✓ Cost Control Management
- ✓ Shortage Management
- ✓ Alternative Solution
- ✓ Excess Inventory Management