



**THE DATASHEET OF
ISD2-04-D-M**



NOTES:

1. ⌀ REPRESENTS A CRITICAL DIMENSION.
2. LATCH RETENTION FORCE: 2.22N [.5LB]
3. PARTS TO BE PACKAGED IN TUBES.
4. MEASUREMENTS TO BE MEASURED IN ZONE A.

DO NOT SCALE FROM THIS PRINT

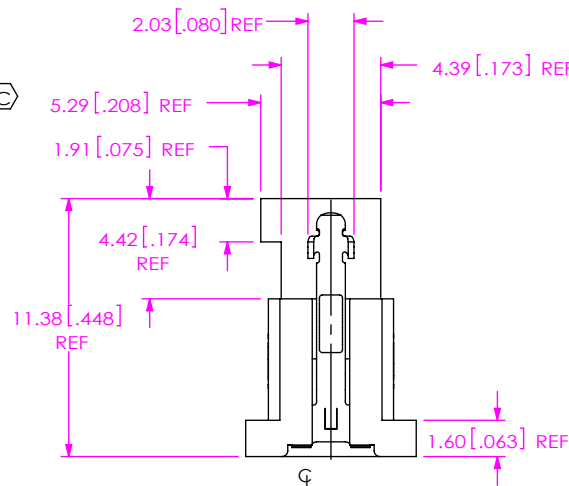
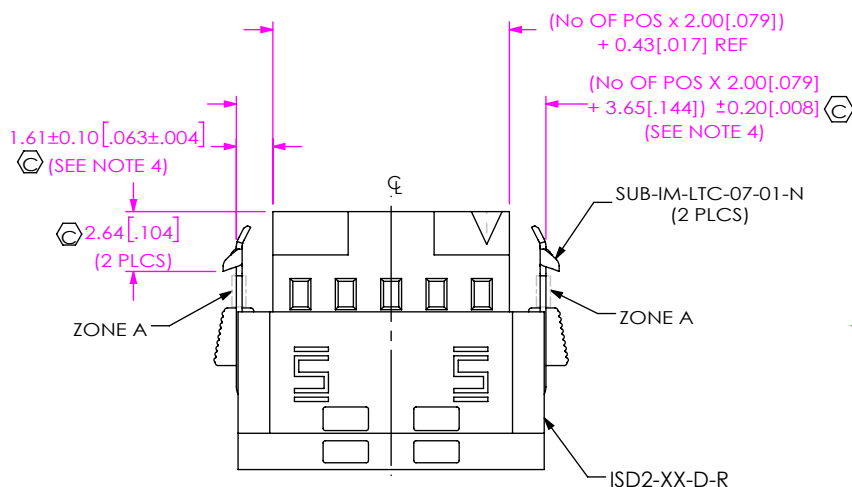
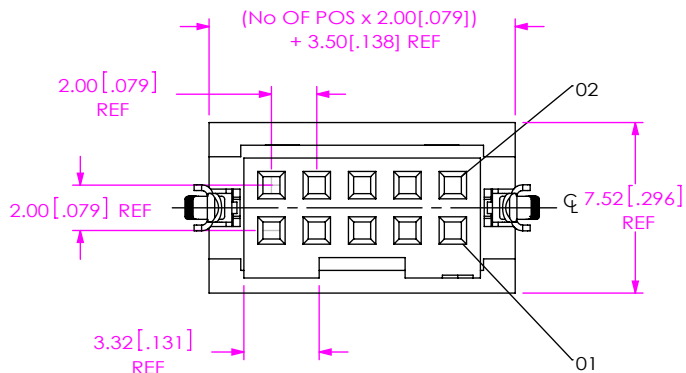
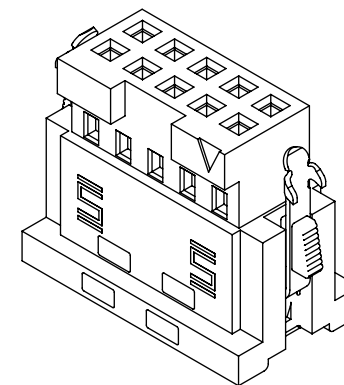
DESIGNED & DIMENSIONED IN MILLIMETERS [INCHES]

ISD2-XX-D-X

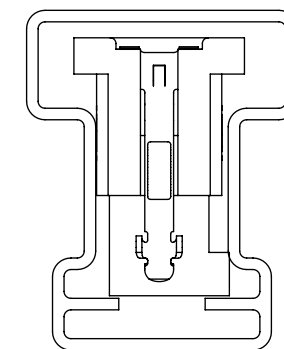
No OF POSITIONS
-02 THRU -50
(PER ROW)

OPTION
-M: METAL RETENTION LATCH
-S: DUAL SCREW DOWN

ROW SPECIFICATION
-D: DOUBLE ROW



PACKAGING VIEW



TUBE:PT-1-24-02-44
PLUG:TP-07

FIG 1
ISD2-05-D-M SHOWN

UNLESS OTHERWISE SPECIFIED, DIMENSIONS ARE IN MILLIMETERS.
TOLERANCES ARE:
DECIMALS ANGLES
X.X: ± 0.3[.01] 2°
X.XX: ± 0.13[.005]
X.XXX: ± 0.051[.0020]

PROPRIETARY NOTE
THIS DOCUMENT CONTAINS CONFIDENTIAL AND PROPRIETARY INFORMATION AND ALL DESIGN, MANUFACTURING, REPRODUCTION, USE, PATENT RIGHTS AND SALES RIGHTS ARE EXPRESSLY RESERVED BY SAMTEC, INC. THIS DOCUMENT SHALL NOT BE DISCLOSED, IN WHOLE OR PART, TO ANY UNAUTHORIZED PERSON OR ENTITY NOR REPRODUCED, TRANSFERRED OR INCORPORATED IN ANY OTHER PROJECT IN ANY MANNER WITHOUT THE EXPRESS WRITTEN CONSENT OF SAMTEC, INC.



520 PARK EAST BLVD, NEW ALBANY, IN 47150
PHONE: 812-944-6733 FAX: 812-948-5047
e-Mail: info@SAMTEC.com code 55322

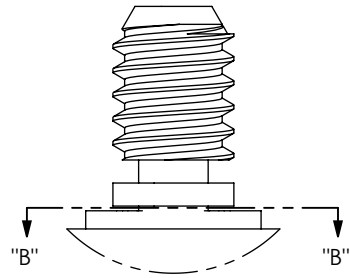
MATERIAL: DO NOT SCALE DRAWING SHEET SCALE: 3:1

INSULATOR: LCP, COLOR: BLACK
LATCH STAMPING: BeCu
LATCH OVERMOLDING: NYLON, COLOR: WHITE
BUTTON: NYLON, COLOR: WHITE

DESCRIPTION:
2mm DISCRETE WIRE INSULATOR & LATCH ASM

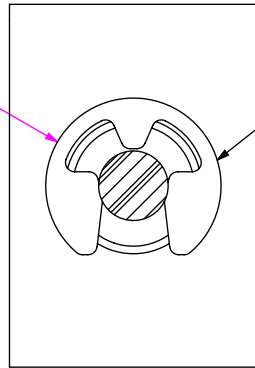
DWG. NO. ISD2-XX-D-X

BY: J. BROWNING 02/22/2010 SHEET 1 OF 2



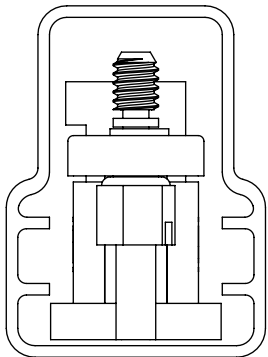
DETAIL 'A'
SCALE 8 : 1

R1.45[.057] REF



SECTION "B"-"B"
SCALE 8 : 1

PACKAGING VIEW
-S OPTION



TUBE:PT-SEAMP003-6
PLUG:TP-07

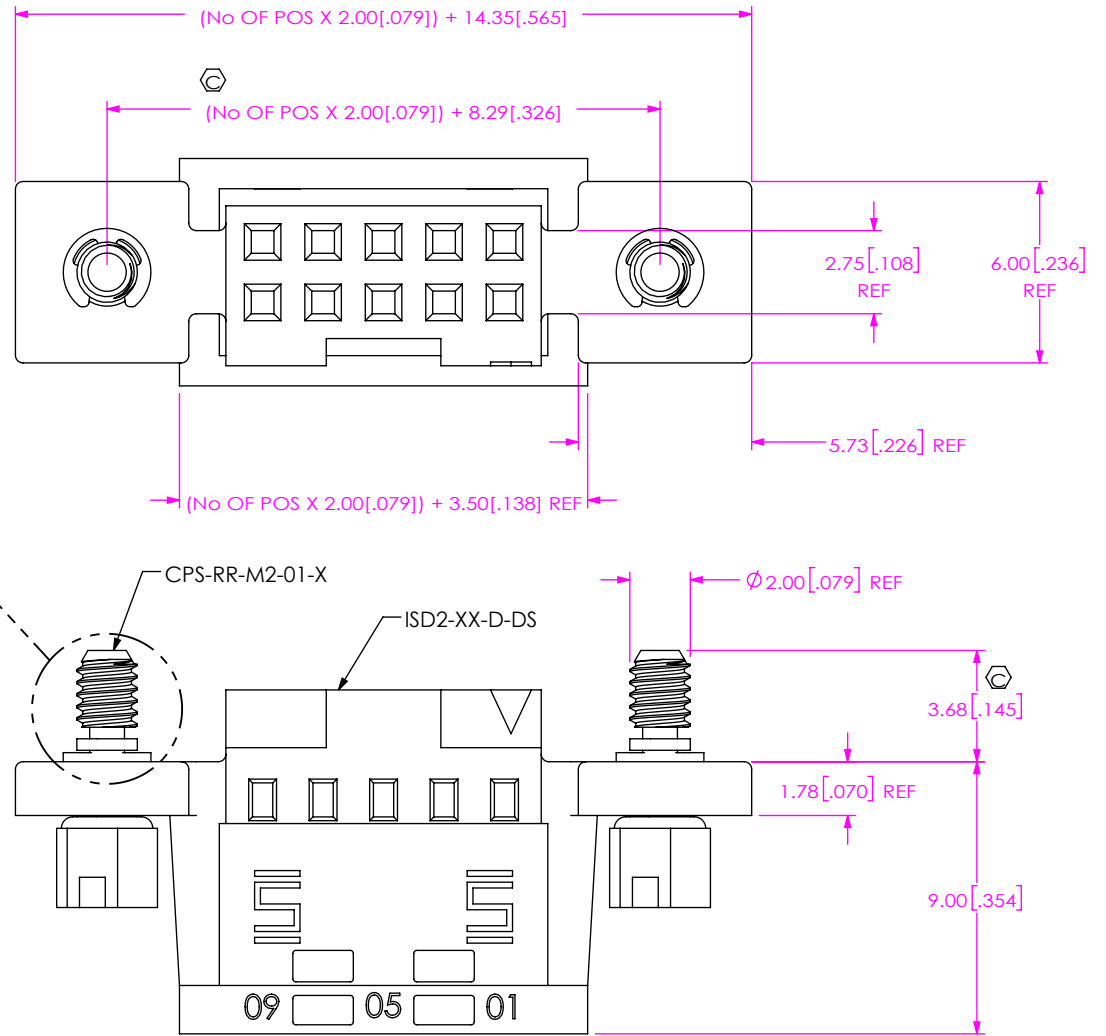


FIG 2
-S: DUAL SCREW DOWN OPTION
ISD2-05-D-S SHOWN
(DIFFERENT AS SHOWN, OTHERWISE SAME AS FIG 1)

PROPRIETARY NOTE
THIS DOCUMENT CONTAINS CONFIDENTIAL AND PROPRIETARY INFORMATION AND ALL DESIGN, MANUFACTURING, REPRODUCTION, USE, PATENT RIGHTS AND SALES RIGHTS ARE EXPRESSLY RESERVED BY SAMTEC, INC. THIS DOCUMENT SHALL NOT BE DISCLOSED, IN WHOLE OR PART, TO ANY UNAUTHORIZED PERSON OR ENTITY NOR REPRODUCED, TRANSFERRED OR INCORPORATED IN ANY OTHER PROJECT IN ANY MANNER WITHOUT THE EXPRESS WRITTEN CONSENT OF SAMTEC, INC.

DO NOT SCALE DRAWING

SHEET SCALE: 2:1



520 PARK EAST BLVD, NEW ALBANY, IN 47150
PHONE: 812-944-6733 FAX: 812-948-5047
e-Mail info@SAMTEC.com code 55322

DESCRIPTION:
2mm DISCRETE WIRE INSULATOR & LATCH ASM
DWG. NO.

ISD2-XX-D-X

Looking for pricing, stock, or lifecycle information?

Click below to explore more details on WIN SOURCE:

 [View ISD2-04-D-M on WIN SOURCE](#)

 [Samtec Inc. Information](#)

Optimize Your Supply Chain with WIN SOURCE Solutions

-  Global Sourcing Solution
-  Obsolete Management
-  Cost Control Management
-  Shortage Management
-  Alternative Solution
-  Excess Inventory Management