



**THE DATASHEET OF  
UDD-300-C**



## UDD SERIES UNIVERSAL CARD GUIDES

Nylon Card Guides with Conductive Grounding Clips  
and Static Dissipative Clips



Universal Snap-in Card Guides from Bivar are used in a wide range of applications for securing and aligning PCBs in both standard and unique subrack designs. The snap-in mounting pylons provide excellent panel retention and are designed to press-fit into sheet metal panels for quick and simple installation, requiring no additional tools.

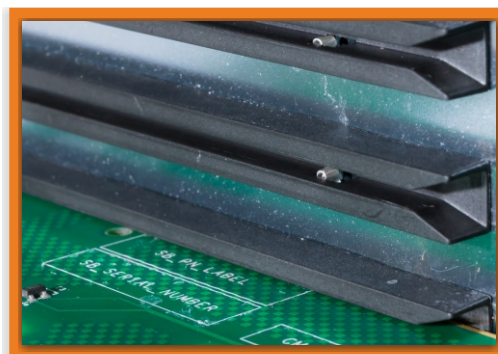
The UDD Series Card Guides feature pre-installed conductive or static dissipative clips to provide either grounding or ESD protection, and are available in a complete range of lengths to meet the installation needs of nearly any application.

### FEATURES AND BENEFITS

- UL Rated 94V-0 precision molded nylon is strong and economical, while providing ruggedized performance with minimal friction during the insertion and removal process.
- Accommodate various PCB board sizes and offer a wide selection of lengths to cover most standard and custom subrack depths.
- Tapered guide entry on both ends and press-fit mounting pylons for simplified and secure installation and insertion.
- PCB channel depth of 0.200" (5mm) offers greater design flexibility and reliability, as well as excellent retention for high vibration environments.
- Pre-installed conductive clips provide integrated grounding contact from the PCB to chassis.
- Pre-installed static dissipative clips provide integrated ESD protection and surface resistivity.

### APPLICATIONS

The UDD Series of Universal Card Guides are ideally suited for mounting printed circuit boards and panels in enclosures and numerous systems with both standardized and unique subrack depth requirements.



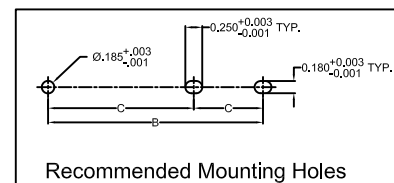
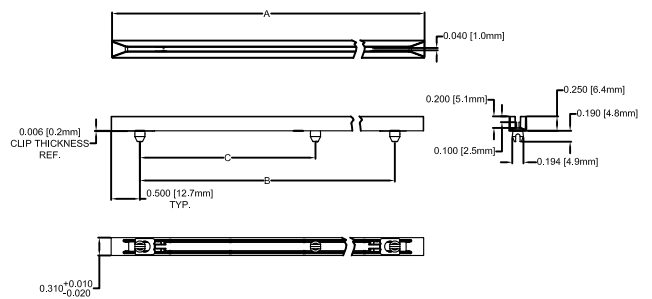
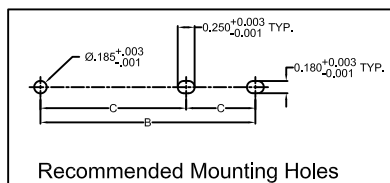
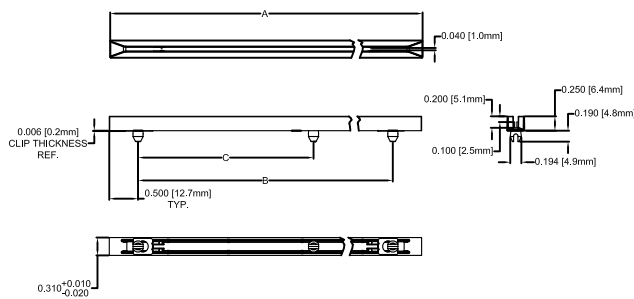
## ORDERING INFORMATION

| Series | Length | Grounding (C) or Static Dissipative Clip (D) | Example   |
|--------|--------|--|-----------|
| UDD    | XXX    | - C or - D                                   | UDD-200-C |

## SPECIFICATIONS

| UDD-XXX-C   |                 |                 |                 |
|-------------|-----------------|-----------------|-----------------|
| Part Number | A: +/- .032(.8) | B: +/- .016(.4) | C: +/- .008(.2) |
| UDD-200-C   | 2.0 (50.8)      | 1.0 (25.4)      | -               |
| UDD-250-C   | 2.5 (63.5)      | 1.5 (38.1)      | -               |
| UDD-300-C   | 3.0 (76.2)      | 2.0 (50.8)      | -               |
| UDD-350-C   | 3.5 (88.9)      | 2.5 (63.5)      | -               |
| UDD-400-C   | 4.0 (101.6)     | 3.0 (76.2)      | -               |
| UDD-450-C   | 4.5 (114.3)     | 3.5 (88.9)      | -               |
| UDD-500-C   | 5.0 (127.0)     | 4.0 (101.6)     | -               |
| UDD-550-C   | 5.5 (139.7)     | 4.5 (114.3)     | -               |
| UDD-600-C   | 6.0 (152.4)     | 5.0 (127.0)     | -               |
| UDD-650-C   | 6.5 (165.1)     | 5.5 (139.7)     | -               |
| UDD-700-C   | 7.0 (177.8)     | 6.0 (152.4)     | -               |
| UDD-750-C   | 7.5 (190.5)     | 6.5 (165.1)     | -               |
| UDD-800-C   | 8.0 (203.2)     | 7.0 (177.8)     | -               |
| UDD-850-C   | 8.5 (215.9)     | 7.5 (190.5)     | 3.75 (95.3)     |
| UDD-900-C   | 9.0 (228.6)     | 8.0 (203.2)     | 4.00 (101.6)    |
| UDD-950-C   | 9.5 (241.3)     | 8.5 (215.9)     | 4.25 (108.0)    |
| UDD-1000-C  | 10.0 (254.0)    | 9.0 (228.6)     | 4.50 (114.3)    |
| UDD-1050-C  | 10.5 (266.7)    | 9.5 (241.3)     | 4.75 (120.7)    |
| UDD-1100-C  | 11.0 (279.4)    | 10.0 (254.0)    | 5.00 (127.0)    |

| UDD-XXX-D   |                 |                 |                 |
|-------------|-----------------|-----------------|-----------------|
| Part Number | A: +/- .032(.8) | B: +/- .016(.4) | C: +/- .008(.2) |
| UDD-200-D   | 2.0 (50.8)      | 1.0 (25.4)      | -               |
| UDD-250-D   | 2.5 (63.5)      | 1.5 (38.1)      | -               |
| UDD-300-D   | 3.0 (76.2)      | 2.0 (50.8)      | -               |
| UDD-350-D   | 3.5 (88.9)      | 2.5 (63.5)      | -               |
| UDD-400-D   | 4.0 (101.6)     | 3.0 (76.2)      | -               |
| UDD-450-D   | 4.5 (114.3)     | 3.5 (88.9)      | -               |
| UDD-500-D   | 5.0 (127.0)     | 4.0 (101.6)     | -               |
| UDD-550-D   | 5.5 (139.7)     | 4.5 (114.3)     | -               |
| UDD-600-D   | 6.0 (152.4)     | 5.0 (127.0)     | -               |
| UDD-650-D   | 6.5 (165.1)     | 5.5 (139.7)     | -               |
| UDD-700-D   | 7.0 (177.8)     | 6.0 (152.4)     | -               |
| UDD-750-D   | 7.5 (190.5)     | 6.5 (165.1)     | -               |
| UDD-800-D   | 8.0 (203.2)     | 7.0 (177.8)     | -               |
| UDD-850-D   | 8.5 (215.9)     | 7.5 (190.5)     | 3.75 (95.3)     |
| UDD-900-D   | 9.0 (228.6)     | 8.0 (203.2)     | 4.00 (101.6)    |
| UDD-950-D   | 9.5 (241.3)     | 8.5 (215.9)     | 4.25 (108.0)    |
| UDD-1000-D  | 10.0 (254.0)    | 9.0 (228.6)     | 4.50 (114.3)    |
| UDD-1050-D  | 10.5 (266.7)    | 9.5 (241.3)     | 4.75 (120.7)    |
| UDD-1100-D  | 11.0 (279.4)    | 10.0 (254.0)    | 5.00 (127.0)    |



## Looking for pricing, stock, or lifecycle information?

Click below to explore more details on WIN SOURCE:

 [View UDD-300-C on WIN SOURCE](#)

 [Bivar Inc. Information](#)

## Optimize Your Supply Chain with WIN SOURCE Solutions

-  Global Sourcing Solution
-  Obsolete Management
-  Cost Control Management
-  Shortage Management
-  Alternative Solution
-  Excess Inventory Management