



**THE DATASHEET OF
SML-LXLC1206USBCTR**

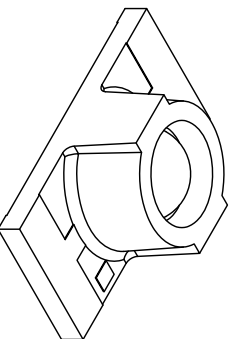
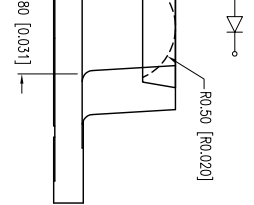
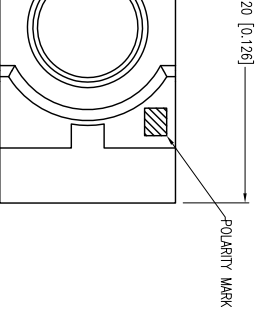


PART NUMBER

SML-LXLC1206USBCTR

REV.

-



ELECTRO-OPTICAL CHARACTERISTICS $I_a=20\text{mA}$			
PARAMETER	MIN	TYP	MAX
PEAK WAVELENGTH		460	
FORWARD VOLTAGE		3.3	4.0
REVERSE VOLTAGE	5.0		
AXIAL INTENSITY		250	
VIEWING ANGLE		70	
EMITTED COLOR:	BLUE		
LENS FINISH:	WATER CLEAR		

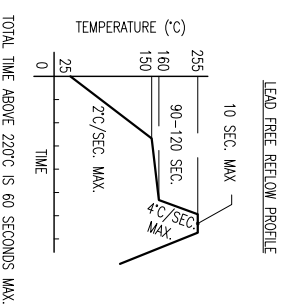
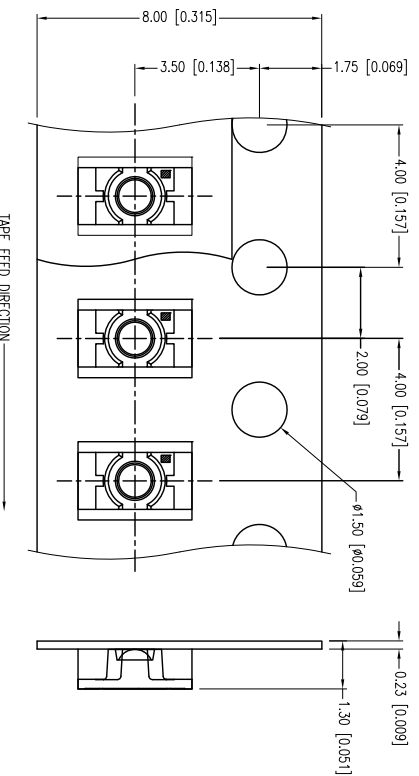
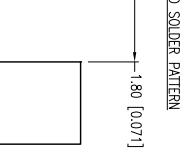
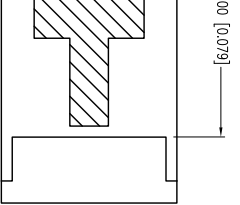
LIMITS OF SAFE OPERATION AT 25°C

PARAMETER	MAX	UNITS
PEAK FORWARD CURRENT*	150	mA
STEADY CURRENT	30	mA
POWER DISSIPATION	120	mW
DERATE FROM 25°C	-1.2	mW/°C
OPERATING TEMP.	-40 TO +85	°C
STORAGE TEMP.	-40 TO +85	°C

* I<10µs

CAUTION: MOISTURE SENSITIVE DEVICE
PER JEDEC LEVEL 3 STANDARDS

CAUTION: STATIC SENSITIVE DEVICE
FOLLOW PROPER E.S.D. HANDLING PROCEDURES
WHEN WORKING WITH THIS PART.



UNCONTROLLED DOCUMENT

DATE: 08.16.13 DRAWN BY: MA

PAGE: 1 OF 1 CHKD BY: KF

SCALE: NTS APRVD BY: KF

UNIT: mm [INCH]



Y A/E
SAL TL 60188-4900
800.278.5666
3.15.2152
LUXEY.COM

LUXEY PHOTONICS GROUP

X±1 (+0.039), X.X=±0.5 (+0.020), X.XX=±0.25 (+0.010), X.XXX=±0.127 (+0.005), LEAD SIZE=±0.05 (+0.002), LEAD LENGTH=±0.75 (+0.030), MIN= +0.00 DECMAL PRECISION MAX.= +0.00 DECMAL PRECISION

1.6mm X 3.2mm, SMT LED WITH LENS, 460nm BLUE.

THE SPECIFICATIONS MAY CHANGE AT ANY TIME WITHOUT NOTICE DUE TO NEW MATERIALS OR PRODUCT IMPROVEMENT

CONFIDENTIAL INFORMATION
THE INFORMATION CONTAINED IN THIS DOCUMENT IS THE PROPERTY OF LUXEY INC. EXCEPT AS SPECIFICALLY AUTHORIZED IN WRITING BY LUXEY INC., THE HOLDER OF THIS DOCUMENT SHALL KEEP ALL INFORMATION CONTAINED HEREIN CONFIDENTIAL AND SHALL PROTECT SAME IN WHOLE OR IN PART FROM DISCLOSURE AND DISSEMINATION TO ALL THIRD PARTIES.

Looking for pricing, stock, or lifecycle information?

Click below to explore more details on WIN SOURCE:

- ⊖ [View SML-LXLC1206USBCTR on WIN SOURCE](#)
- ⊖ [Lumex Opto/Components Inc. Information](#)

Optimize Your Supply Chain with WIN SOURCE Solutions

- ✓ Global Sourcing Solution
- ✓ Obsolete Management
- ✓ Cost Control Management
- ✓ Shortage Management
- ✓ Alternative Solution
- ✓ Excess Inventory Management