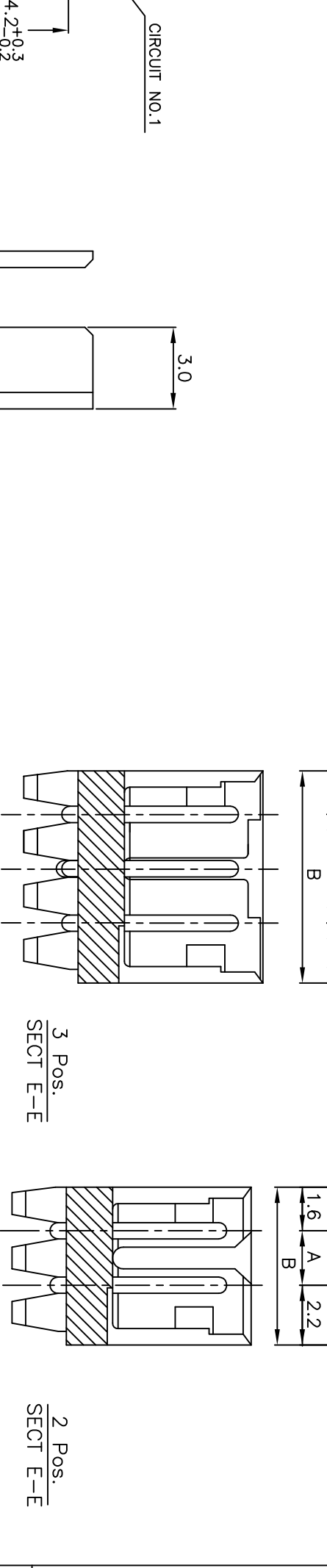
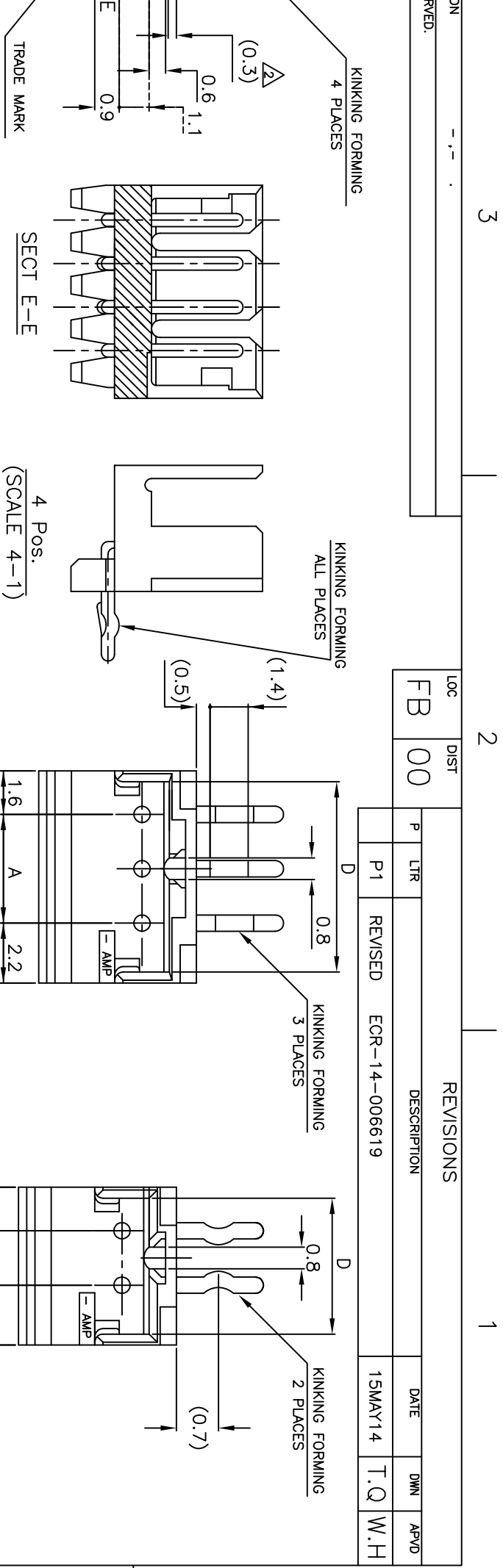




THE DATASHEET OF
1-292250-1



REVISED.	LOC	DIST	REVISIONS		DATE	DWN	APVD
	FB	00	P	LTR	DESCRIPTION		
			P1	REVISED	ECR-14-006619	15MAY14	T.Q W.H



7-292250-5	5-292250-5	3-292250-5	1-292250-5	15	28	31.8	25.2	31.0
7-4	5-4	3-4	1-4	14	26	29.8	23.2	29.0
7-3	5-3	3-3	1-3	13	24	27.8	21.2	27.0
7-2	5-2	3-2	1-2	12	22	25.8	19.2	25.0
7-1	5-1	3-1	1-1	11	20	23.8	17.2	23.0
7-0	5-0	3-0	1-0	10	18	21.8	15.2	21.0
6-9	4-9	2-9	-9	9	16	19.8	13.2	19.0
6-8	4-8	2-8	-8	8	14	17.8	11.2	17.0
6-7	4-7	2-7	-7	7	12	15.8	9.2	15.0
6-6	4-6	2-6	-6	6	10	13.8	7.2	13.0
6-5	4-5	2-5	-5	5	8	11.8	5.2	11.0
6-4	4-4	2-4	-4	4	6	9.8	3.2	9.0
6-3	4-3	2-3	-3	3	4	7.8	-	7.0
6-292250-2	4-292250-2	2-292250-2	292250-2	2	2	5.8	-	5.0

CIRCUIT NO.1
4.2^{+0.3}_{-0.2}
(0.7)
5~15 Pos.NOTES:
1. MATERIAL: HOUSING - NYLON 66 (UL94V-0)
POST - TIN BRASS
△ 12 POS ~ 15 POS ONLY

THIS DRAWING IS A CONTROLLED DOCUMENT.
DWN 31JAN03 S.XU
CHK 31JAN03 S.YAO
APVD 31JAN03 T. SASAKI
PRODUCT SPEC 108-60016
APPLICATION SPEC
WEIGHT
CUSTOMER DRAWING

STE TE Connectivity
POST HEADER ASS'Y BOX-H DIP
(AMP CT CONNECTOR 2mm PITCH)

DIMENSIONS: mm
TOLERANCES UNLESS OTHERWISE SPECIFIED: ±0.2
6-PLC
4-PLC
2-PLC
3-PLC
4-PLC
FINISH
SEE NOTE
MATERIAL
SEE NOTE

SIZE A3
CAGE CODE 00779
DRAWING NO. G=292250
SCALE 5:1
SHEET 1 OF 1
REV P1
RESTRICTED TO

Looking for pricing, stock, or lifecycle information?

Click below to explore more details on WIN SOURCE:

[View 1-292250-1 on WIN SOURCE](#)

[TE Connectivity Information](#)

Optimize Your Supply Chain with WIN SOURCE Solutions

- ✓ Global Sourcing Solution
- ✓ Obsolete Management
- ✓ Cost Control Management
- ✓ Shortage Management
- ✓ Alternative Solution
- ✓ Excess Inventory Management