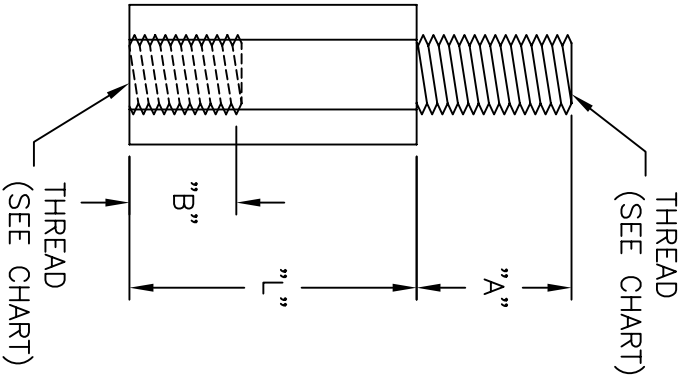
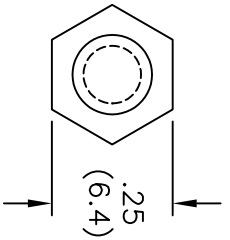




**THE DATASHEET OF  
MFTS8-20-48**





PART NO.			"L"
#4-40 THREAD	#6-32 THREAD	#8-32 THREAD	
MFTS4-4-48	MFTS6-4-48*	MFTS8-4-48*	1/4 (6.4)
MFTS4-5-48	MFTS6-5-48	MFTS8-5-48**	5/16 (7.9)
MFTS4-6-48	MFTS6-6-48	MFTS8-6-48**	3/8 (9.5)
MFTS4-7-48	MFTS6-7-48	MFTS8-7-48	7/16 (11.1)
MFTS4-8-48	MFTS6-8-48	MFTS8-8-48	1/2 (12.7)
MFTS4-9-48	MFTS6-9-48	MFTS8-9-48	9/16 (14.3)
MFTS4-10-48	MFTS6-10-48	MFTS8-10-48	5/8 (15.9)
MFTS4-11-48	MFTS6-11-48	MFTS8-11-48	11/16 (17.5)
MFTS4-12-48	MFTS6-12-48	MFTS8-12-48	3/4 (19.1)
MFTS4-13-48	MFTS6-13-48	MFTS8-13-48	13/16 (20.6)
MFTS4-14-48	MFTS6-14-48	MFTS8-14-48	7/8 (22.2)
MFTS4-16-48	MFTS6-16-48	MFTS8-16-48	1.00 (25.4)
MFTS4-18-48	MFTS6-18-48	MFTS8-18-48	1-1/8 (28.6)
MFTS4-20-48	MFTS6-20-48	MFTS8-20-48	1-1/4 (31.8)
MFTS4-22-48	MFTS6-22-48	MFTS8-22-48	1-3/8 (34.9)

THREAD SIZE	DIM "A"	DIM "B" MIN.
#4-40	3/16 (4.8)	3/16 (4.8)
#6-32	1/4 (6.4)	1/4 (6.4)
#8-32	3/8 (9.5)	3/8 (9.5)



\* DIM. "B" IS 3/16 (4.8) MIN.  
 \*\* DIM. "B" IS 1/4 (6.4) MIN.

5 (RMS-48);  
 NYLON UL-94 V0, (RMS-103),  
 ORDER ONLY.

TITLE: MALE-FEMALE THREADED STANDOFFS		DWG IN IN (MM)		FINAL	PRINT TYPE CA
TOLERANCES UNLESS NOTED .XX=±.010 .XXX=±.005 FRAC=±1/64 ANG=±1°		DWN: J.B.	APP:		
FILE #	MFTS	PART #			
MAT'L:	SEE NOTES	SEE TABLE			
RE:	RICHCO, INC.	RICHCO INC. PO BOX 804238 CHICAGO, 60680 (773) 539-4060			
ENG	SM 05.11.01	DWG IN IN (MM)			
S-19	J.L.07.05.00				
D	J.L. 8.16.99				
L PARTS	JB 07.15.97				
	ENGR DATE				

## Looking for pricing, stock, or lifecycle information?

Click below to explore more details on WIN SOURCE:

-  [View MFTS8-20-48 on WIN SOURCE](#)
-  [Essentra Components](#) Information

## Optimize Your Supply Chain with WIN SOURCE Solutions

-  Global Sourcing Solution
-  Obsolete Management
-  Cost Control Management
-  Shortage Management
-  Alternative Solution
-  Excess Inventory Management