



**THE DATASHEET OF
CD74HC4051QPWRQ1**



CD74HC4051-Q1 ANALOG MULTIPLEXER/DEMULTIPLEXER

SCLS552A – DECEMBER 2003 – REVISED APRIL 2008

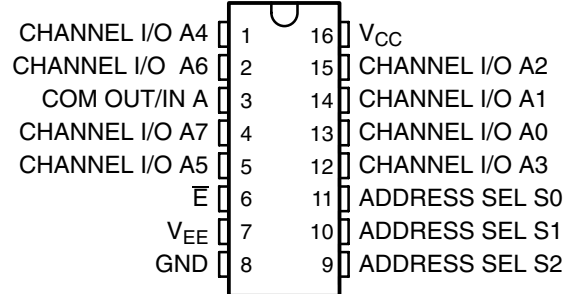
- Qualified for Automotive Applications
- Wide Analog Input Voltage Range of ± 5 V Max
- Low ON Resistance
 - 70 Ω Typical ($V_{CC} - V_{EE} = 4.5$ V)
 - 40 Ω Typical ($V_{CC} - V_{EE} = 9$ V)
- Low Crosstalk Between Switches
- Fast Switching and Propagation Speeds
- Break-Before-Make Switching
- Operation Control Voltage = 2 V to 6 V
- Switch Voltage = 0 V to 10 V
- High Noise Immunity $N_{IL} = 30\%$, $N_{IH} = 30\%$ of V_{CC} , $V_{CC} = 5$ V

description/ordering information

This device is a digitally controlled analog switch that utilizes silicon-gate CMOS technology to achieve operating speeds similar to LSTTL, with the low power consumption of standard CMOS integrated circuits.

This analog multiplexer/demultiplexer controls analog voltages that may vary across the voltage supply range (i.e., V_{CC} to V_{EE}). These bidirectional switches allow any analog input to be used as an output and vice versa. The switches have low ON resistance and low OFF leakages. In addition, the device has an enable control (\bar{E}) that, when high, disables all switches to their OFF state.

M OR PW PACKAGE
(TOP VIEW)



ORDERING INFORMATION†

| T_A | PACKAGE‡ | | ORDERABLE PART NUMBER | TOP-SIDE MARKING |
|----------------|------------|---------------|-----------------------|------------------|
| | SOIC – M | Tape and reel | | |
| –40°C to 125°C | SOIC – M | Tape and reel | CD74HC4051QM96Q1 | HC4051Q |
| | TSSOP – PW | Tape and reel | CD74HC4051QPWRQ1 | HJ4051Q |

† For the most current package and ordering information, see the Package Option Addendum at the end of this document, or see the TI web site at <http://www.ti.com>.

‡ Package drawings, thermal data, and symbolization are available at <http://www.ti.com/packaging>.



Please be aware that an important notice concerning availability, standard warranty, and use in critical applications of Texas Instruments semiconductor products and disclaimers thereto appears at the end of this data sheet.

PRODUCTION DATA information is current as of publication date. Products conform to specifications per the terms of Texas Instruments standard warranty. Production processing does not necessarily include testing of all parameters.

 **TEXAS
INSTRUMENTS**

POST OFFICE BOX 655303 • DALLAS, TEXAS 75265

Copyright © 2008, Texas Instruments Incorporated

CD74HC4051-Q1 ANALOG MULTIPLEXER/DEMULTIPLEXER

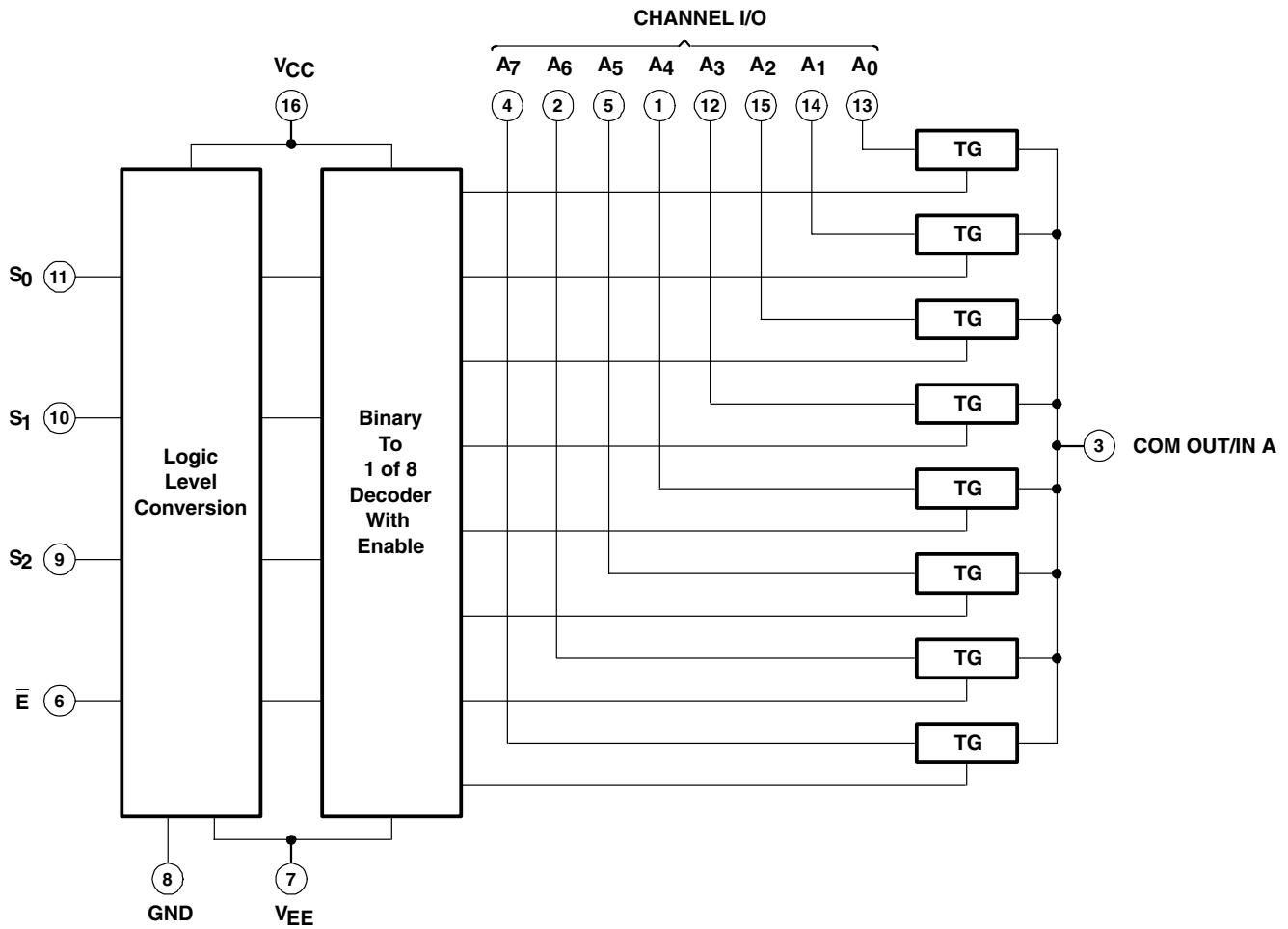
SCLS552A – DECEMBER 2003 – REVISED APRIL 2008

FUNCTION TABLE

| INPUTS | | | | ON CHANNEL(S) |
|--------|----------------|----------------|----------------|---------------|
| E | S ₂ | S ₁ | S ₀ | |
| L | L | L | L | A0 |
| L | L | L | H | A1 |
| L | L | H | L | A2 |
| L | L | H | H | A3 |
| L | H | L | L | A4 |
| L | H | L | H | A5 |
| L | H | H | L | A6 |
| L | H | H | H | A7 |
| H | X | X | X | None |

X = Don't care

logic diagram (positive logic)



CD74HC4051-Q1

ANALOG MULTIPLEXER/DEMULTIPLEXER

SCLS552A – DECEMBER 2003 – REVISED APRIL 2008

absolute maximum ratings over operating free-air temperature range (unless otherwise noted)†

| | |
|--|------------------|
| Supply voltage range, $V_{CC} - V_{EE}$ (see Note 1) | –0.5 V to 10.5 V |
| Supply voltage range, V_{CC} | –0.5 V to 7 V |
| Supply voltage range, V_{EE} | +0.5 V to –7 V |
| Input clamp current, I_{IK} ($V_I < -0.5$ V or $V_I > V_{CC} + 0.5$ V) | ±20 mA |
| Output clamp current, I_{OK} ($V_O < V_{EE} - 0.5$ V or $V_O > V_{CC} + 0.5$ V) | ±20 mA |
| Switch current ($V_I > V_{EE} - 0.5$ V or $V_I < V_{CC} + 0.5$ V) | ±25 mA |
| Continuous current through V_{CC} or GND | ±50 mA |
| V_{EE} current, I_{EE} | –20 mA |
| Package thermal impedance, θ_{JA} (see Note 2): M package | 73°C/W |
| PW package | 108°C/W |
| Maximum junction temperature, T_J | 150°C |
| Lead temperature (during soldering): | |
| At distance $1/16 \pm 1/32$ inch ($1,59 \pm 0,79$ mm) from case for 10 s max | 300°C |
| Storage temperature range, T_{stg} | –65°C to 150°C |

† Stresses beyond those listed under “absolute maximum ratings” may cause permanent damage to the device. These are stress ratings only, and functional operation of the device at these or any other conditions beyond those indicated under “recommended operating conditions” is not implied. Exposure to absolute-maximum-rated conditions for extended periods may affect device reliability.

- NOTES: 1. All voltages referenced to GND unless otherwise specified.
 2. The package thermal impedance is calculated in accordance with JESD 51-7.

recommended operating conditions (see Note 3)

| | | MIN | MAX | UNIT | |
|----------|--|------------------|----------|------|----|
| V_{CC} | Supply voltage (see Note 4) | 2 | 6 | V | |
| | Supply voltage, $V_{CC} - V_{EE}$ (see Figure 1) | 2 | 10 | V | |
| V_{EE} | Supply voltage, (see Note 4 and Figure 2) | 0 | –6 | V | |
| V_{IH} | High-level input voltage | $V_{CC} = 2$ V | 1.5 | V | |
| | | $V_{CC} = 4.5$ V | 3.15 | | |
| | | $V_{CC} = 6$ V | 4.2 | | |
| V_{IL} | Low-level input voltage | $V_{CC} = 2$ V | 0.5 | V | |
| | | $V_{CC} = 4.5$ V | 1.35 | | |
| | | $V_{CC} = 6$ V | 1.8 | | |
| V_I | Input control voltage | 0 | V_{CC} | V | |
| V_{IS} | Analog switch I/O voltage | V_{EE} | V_{CC} | V | |
| t_t | Input transition (rise and fall) time | $V_{CC} = 2$ V | 0 | 1000 | ns |
| | | $V_{CC} = 4.5$ V | 0 | 500 | |
| | | $V_{CC} = 6$ V | 0 | 400 | |
| T_A | Operating free-air temperature | –40 | 125 | °C | |

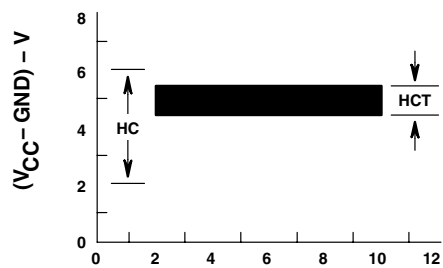
- NOTES: 3. All unused inputs of the device must be held at V_{CC} or GND to ensure proper device operation. Refer to the TI application report, *Implications of Slow or Floating CMOS Inputs*, literature number SCBA004.
 4. In certain applications, the external load resistor current may include both V_{CC} and signal-line components. To avoid drawing V_{CC} current when switch current flows into the transmission gate inputs, the voltage drop across the bidirectional switch must not exceed 0.6 V (calculated from r_{on} values shown in electrical characteristics table). No V_{CC} current flows through R_L if the switch current flows into the COM OUT/IN A terminal.



CD74HC4051-Q1 ANALOG MULTIPLEXER/DEMULTIPLEXER

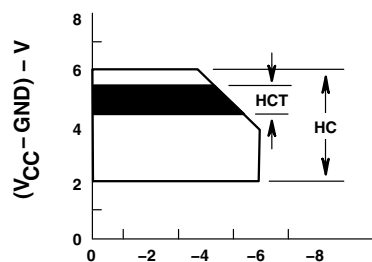
SCLS552A – DECEMBER 2003 – REVISED APRIL 2008

recommended operating area as a function of supply voltages



(V_{CC} - V_{EE}) - V

Figure 1



(V_{EE} - GND) - V

Figure 2

electrical characteristics over recommended operating free-air temperature range (unless otherwise noted)

| PARAMETER | TEST CONDITIONS | V _{EE} | V _{CC} | T _A = 25°C | | | T _A = -40°C TO 125°C | | UNIT |
|------------------|---|---|-----------------|-----------------------|------|-----|---------------------------------|-----|------|
| | | | | MIN | TYP | MAX | MIN | MAX | |
| r _{on} | I _O = 1 mA, V _I = V _{IH} or V _{IL} , See Figure 8 | V _{IS} = V _{CC} or V _{EE} | 0 V | 4.5 V | 70 | 160 | | 240 | Ω |
| | | | 0 V | 6 V | 60 | 140 | | 210 | |
| | | | -4.5 V | 4.5 V | 40 | 120 | | 180 | |
| | | V _{IS} = V _{CC} to V _{EE} | 0 V | 4.5 V | 90 | 180 | | 270 | |
| | | | 0 V | 6 V | 80 | 160 | | 240 | |
| | | | -4.5 V | 4.5 V | 45 | 130 | | 195 | |
| Δr _{on} | Between any two channels | 0 V | 4.5 V | 10 | | | | Ω | |
| | | 0 V | 6 V | 8.5 | | | | | |
| | | -4.5 V | 4.5 V | 5 | | | | | |
| I _{IZ} | For switch OFF: When V _{IS} = V _{CC} , V _{OS} = V _{EE} ; When V _{IS} = V _{EE} , V _{OS} = V _{CC} For switch ON: All applicable combinations of V _{IS} and V _{OS} voltage levels, V _I = V _{IH} or V _{IL} | 0 V | 6 V | | ±0.2 | | ±2 | μA | |
| | | -5 V | 5 V | | ±0.4 | | ±4 | | |
| I _{IL} | V _I = V _{CC} or GND | 0 V | 6 V | | ±0.1 | | ±1 | μA | |
| I _{CC} | I _O = 0, V _I = V _{CC} or GND | When V _{IS} = V _{EE} , V _{OS} = V _{CC} | 0 V | 6 V | | 8 | | 160 | μA |
| | | When V _{IS} = V _{CC} , V _{OS} = V _{EE} | -5 V | 5 V | | 16 | | 320 | |

CD74HC4051-Q1 ANALOG MULTIPLEXER/DEMULTIPLEXER

SCLS552A – DECEMBER 2003 – REVISED APRIL 2008

switching characteristics over recommended operating free-air temperature range (unless otherwise noted) (see Figure 7)

| PARAMETER | FROM (INPUT) | TO (OUTPUT) | LOAD CAPACITANCE | V _{EE} | V _{CC} | T _A = 25°C | | | T _A = -40°C TO 125°C | | UNIT |
|------------------|--------------------------|-------------|------------------------|-----------------|-----------------|-----------------------|-----|-----|---------------------------------|-----|------|
| | | | | | | MIN | TYP | MAX | MIN | MAX | |
| t _{pd} | IN | OUT | C _L = 15 pF | | 5 V | | 4 | | | | ns |
| | | | C _L = 50 pF | 0 V | 2 V | | | 60 | 90 | ns | |
| | | | | | 4.5 V | | | 12 | 18 | | |
| | | | | | 6 V | | | 10 | 15 | | |
| -4.5 V | 4.5 V | | 8 | 12 | | | | | | | |
| t _{en} | ADDRESS SEL or \bar{E} | OUT | C _L = 15 pF | | 5 V | | 19 | | | ns | |
| | | | C _L = 50 pF | 0 V | 2 V | | | 225 | 340 | | |
| | | | | | 4.5 V | | | 45 | 68 | | |
| | | | | | 6 V | | | 38 | 57 | | |
| -4.5 V | 4.5 V | | 32 | 48 | | | | | | | |
| t _{dis} | ADDRESS SEL or \bar{E} | OUT | C _L = 15 pF | | 5 V | | 19 | | | ns | |
| | | | C _L = 50 pF | 0 V | 2 V | | | 225 | 340 | | |
| | | | | | 4.5 V | | | 45 | 68 | | |
| | | | | | 6 V | | | 38 | 57 | | |
| -4.5 V | 4.5 V | | 32 | 48 | | | | | | | |
| C _I | Control | | C _L = 50 pF | | | | 10 | 10 | pF | | |

operating characteristics, V_{CC} = 5 V, T_A = 25°C, Input t_r, t_f = 6 ns

| PARAMETER | TYP | UNIT |
|--|-----|------|
| C _{pd} Power dissipation capacitance (see Note 5) | 50 | pF |

NOTE 5: C_{pd} is used to determine the dynamic power consumption, per package.

$$P_D = C_{pd} V_{CC}^2 f_i + \sum (C_L + C_S) V_{CC}^2 f_O$$

f_O = output frequency

f_i = input frequency

C_L = output load capacitance

C_S = switch capacitance

V_{CC} = supply voltage

CD74HC4051-Q1 ANALOG MULTIPLEXER/DEMULTIPLEXER

SCLS552A – DECEMBER 2003 – REVISED APRIL 2008

analog channel characteristics, $T_A = 25^\circ\text{C}$

| PARAMETER | TEST CONDITIONS | V_{EE} | V_{CC} | MIN | TYP | MAX | UNIT |
|---|---|----------|----------|-----|-------|-----|------|
| C_I | Switch input capacitance | | | | 5 | | pF |
| C_{COM} | Common output capacitance | | | | 25 | | pF |
| f_{max} | Minimum switch frequency response at -3 dB | -2.25 V | 2.25 V | | 145 | | MHz |
| | | -4.5 V | 4.5 V | | 180 | | |
| Sine-wave distortion | See Figure 4 | -2.25 V | 2.25 V | | 0.035 | | % |
| | | -4.5 V | 4.5 V | | 0.018 | | |
| \bar{E} or ADDRESS SEL to switch feed-through noise | See Figure 5, and Notes 7 and 8 | -2.25 V | 2.25 V | | (TBD) | | mV |
| | | -4.5 V | 4.5 V | | (TBD) | | |
| Switch OFF signal feed through | See Figure 6 and Figure 10, and Notes 7 and 8 | -2.25 V | 2.25 V | | -73 | | dB |
| | | -4.5 V | 4.5 V | | -75 | | |

- NOTES: 6. Adjust input voltage to obtain 0 dBm at V_{OS} for $f_{IN} = 1$ MHz.
 7. V_{IS} is centered at $(V_{CC} - V_{EE})/2$.
 8. Adjust input for 0 dBm.

PARAMETER MEASUREMENT INFORMATION

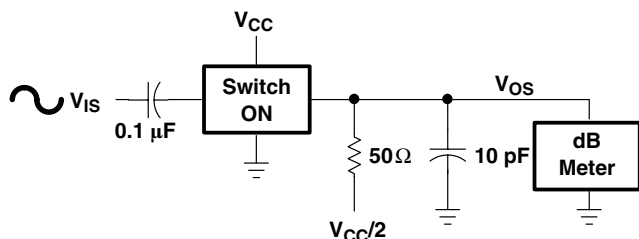


Figure 3. Frequency-Response Test Circuit

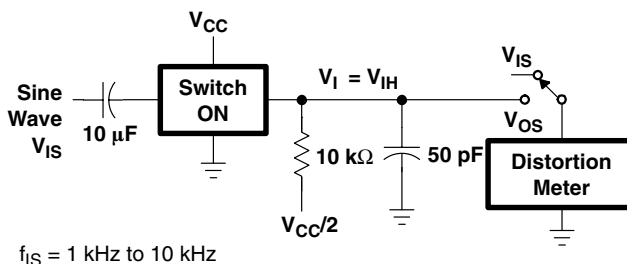


Figure 4. Sine-Wave Distortion Test Circuit

PARAMETER MEASUREMENT INFORMATION

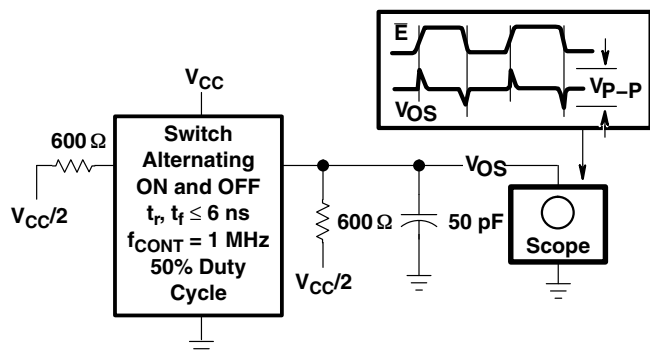


Figure 5. Control to Switch Feedthrough Noise Test Circuit

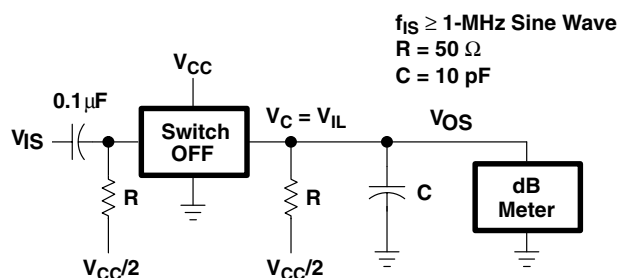
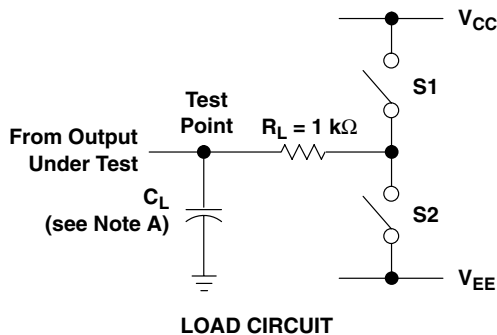


Figure 6. Switch OFF Signal Feedthrough Test Circuit

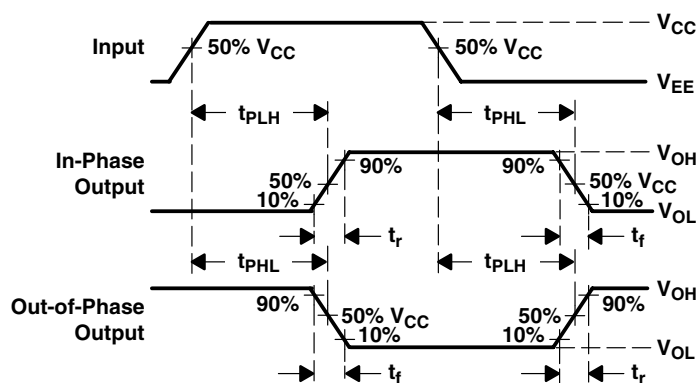
CD74HC4051-Q1 ANALOG MULTIPLEXER/DEMULTIPLEXER

SCLS552A – DECEMBER 2003 – REVISED APRIL 2008

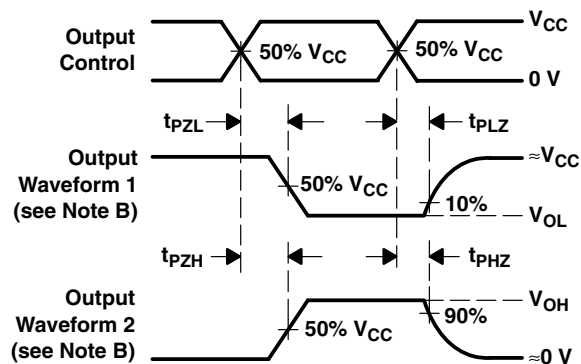
PARAMETER MEASUREMENT INFORMATION



| PARAMETER | | S1 | S2 |
|-----------|-----------|--------|--------|
| t_{en} | t_{pZH} | Open | Closed |
| | t_{pZL} | Closed | Open |
| t_{dis} | t_{pHZ} | Open | Closed |
| | t_{pLZ} | Closed | Open |
| t_{pd} | | Open | Open |



**VOLTAGE WAVEFORMS
PROPAGATION DELAY AND OUTPUT TRANSITION TIMES**



**VOLTAGE WAVEFORMS
OUTPUT ENABLE AND DISABLE TIMES**

- NOTES: A. C_L includes probe and test-fixture capacitance.
 B. Waveform 1 is for an output with internal conditions such that the output is low except when disabled by the output control. Waveform 2 is for an output with internal conditions such that the output is high except when disabled by the output control.
 C. Phase relationships between waveforms were chosen arbitrarily. All input pulses are supplied by generators having the following characteristics: $PRR \leq 1\text{ MHz}$, $Z_O = 50\ \Omega$, $t_r = 6\text{ ns}$, $t_f = 6\text{ ns}$.
 D. For clock inputs, f_{max} is measured with the input duty cycle at 50%.
 E. The outputs are measured one at a time with one input transition per measurement.
 F. t_{PLZ} and t_{PHZ} are the same as t_{dis} .
 G. t_{PZL} and t_{PZH} are the same as t_{en} .
 H. t_{PLH} and t_{PHL} are the same as t_{pd} .

Figure 7. Load Circuit and Voltage Waveforms

TYPICAL CHARACTERISTICS

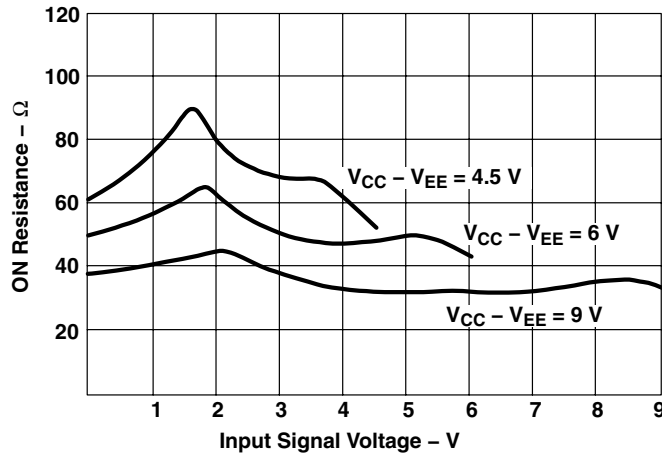


Figure 8. Typical ON Resistance vs Input Signal Voltage

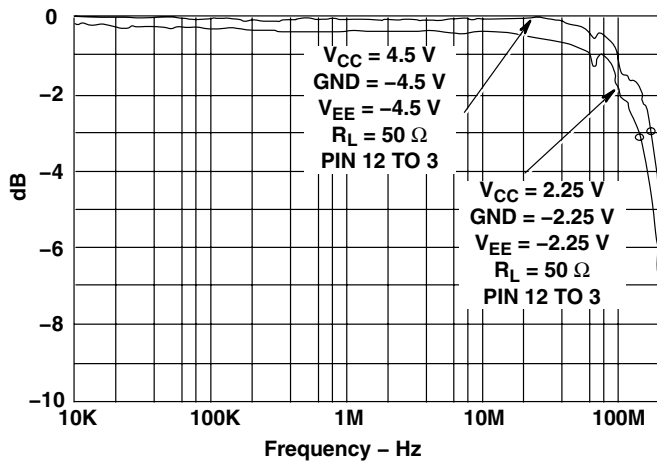


Figure 9. Channel ON Bandwidth

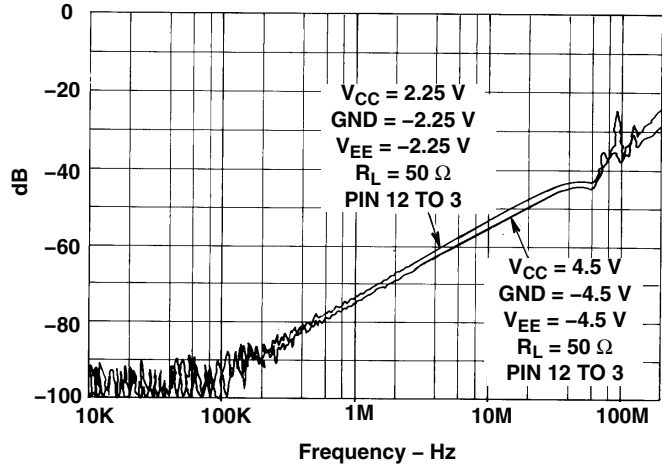


Figure 10. Channel OFF Feedthrough

PACKAGING INFORMATION

| Orderable Device | Status (1) | Package Type | Package Drawing | Pins | Package Qty | Eco Plan (2) | Lead/Ball Finish | MSL Peak Temp (3) | Op Temp (°C) | Top-Side Markings (4) | Samples |
|--------------------|---------------|--------------|--------------------|------|----------------|----------------------------|------------------|----------------------|--------------|--------------------------|-------------------------|
| CD74HC4051QM96G4Q1 | ACTIVE | SOIC | D | 16 | 2500 | Green (RoHS & no Sb/Br) | CU NIPDAU | Level-1-260C-UNLIM | -40 to 125 | HC4051Q | Samples |
| CD74HC4051QM96Q1 | ACTIVE | SOIC | D | 16 | 2500 | Green (RoHS & no Sb/Br) | CU NIPDAU | Level-1-260C-UNLIM | -40 to 125 | HC4051Q | Samples |
| CD74HC4051QPWRG4Q1 | ACTIVE | TSSOP | PW | 16 | 2000 | Green (RoHS & no Sb/Br) | CU NIPDAU | Level-1-260C-UNLIM | -40 to 125 | HJ4051Q | Samples |
| CD74HC4051QPWRQ1 | ACTIVE | TSSOP | PW | 16 | 2000 | Green (RoHS & no Sb/Br) | CU NIPDAU | Level-1-260C-UNLIM | -40 to 125 | HJ4051Q | Samples |

(1) The marketing status values are defined as follows:

ACTIVE: Product device recommended for new designs.

LIFEBUY: TI has announced that the device will be discontinued, and a lifetime-buy period is in effect.

NRND: Not recommended for new designs. Device is in production to support existing customers, but TI does not recommend using this part in a new design.

PREVIEW: Device has been announced but is not in production. Samples may or may not be available.

OBSOLETE: TI has discontinued the production of the device.

(2) Eco Plan - The planned eco-friendly classification: Pb-Free (RoHS), Pb-Free (RoHS Exempt), or Green (RoHS & no Sb/Br) - please check <http://www.ti.com/productcontent> for the latest availability information and additional product content details.

TBD: The Pb-Free/Green conversion plan has not been defined.

Pb-Free (RoHS): TI's terms "Lead-Free" or "Pb-Free" mean semiconductor products that are compatible with the current RoHS requirements for all 6 substances, including the requirement that lead not exceed 0.1% by weight in homogeneous materials. Where designed to be soldered at high temperatures, TI Pb-Free products are suitable for use in specified lead-free processes.

Pb-Free (RoHS Exempt): This component has a RoHS exemption for either 1) lead-based flip-chip solder bumps used between the die and package, or 2) lead-based die adhesive used between the die and leadframe. The component is otherwise considered Pb-Free (RoHS compatible) as defined above.

Green (RoHS & no Sb/Br): TI defines "Green" to mean Pb-Free (RoHS compatible), and free of Bromine (Br) and Antimony (Sb) based flame retardants (Br or Sb do not exceed 0.1% by weight in homogeneous material)

(3) MSL, Peak Temp. -- The Moisture Sensitivity Level rating according to the JEDEC industry standard classifications, and peak solder temperature.

(4) Multiple Top-Side Markings will be inside parentheses. Only one Top-Side Marking contained in parentheses and separated by a "~" will appear on a device. If a line is indented then it is a continuation of the previous line and the two combined represent the entire Top-Side Marking for that device.

Important Information and Disclaimer: The information provided on this page represents TI's knowledge and belief as of the date that it is provided. TI bases its knowledge and belief on information provided by third parties, and makes no representation or warranty as to the accuracy of such information. Efforts are underway to better integrate information from third parties. TI has taken and continues to take reasonable steps to provide representative and accurate information but may not have conducted destructive testing or chemical analysis on incoming materials and chemicals. TI and TI suppliers consider certain information to be proprietary, and thus CAS numbers and other limited information may not be available for release.

In no event shall TI's liability arising out of such information exceed the total purchase price of the TI part(s) at issue in this document sold by TI to Customer on an annual basis.

OTHER QUALIFIED VERSIONS OF CD74HC4051-Q1 :

- Catalog: [CD74HC4051](#)
- Enhanced Product: [CD74HC4051-EP](#)
- Military: [CD54HC4051](#)

NOTE: Qualified Version Definitions:

- Catalog - TI's standard catalog product
- Enhanced Product - Supports Defense, Aerospace and Medical Applications
- Military - QML certified for Military and Defense Applications

TAPE AND REEL INFORMATION



QUADRANT ASSIGNMENTS FOR PIN 1 ORIENTATION IN TAPE



*All dimensions are nominal

| Device | Package Type | Package Drawing | Pins | SPQ | Reel Diameter (mm) | Reel Width W1 (mm) | A0 (mm) | B0 (mm) | K0 (mm) | P1 (mm) | W (mm) | Pin1 Quadrant |
|------------------------|--------------|-----------------|------|------|--------------------|--------------------|---------|---------|---------|---------|--------|---------------|
| CD74HC4051QPWRG4Q 1 | TSSOP | PW | 16 | 2000 | 330.0 | 12.4 | 6.9 | 5.6 | 1.6 | 8.0 | 12.0 | Q1 |
| CD74HC4051QPWRQ1 | TSSOP | PW | 16 | 2000 | 330.0 | 12.4 | 6.9 | 5.6 | 1.6 | 8.0 | 12.0 | Q1 |

TAPE AND REEL BOX DIMENSIONS


*All dimensions are nominal

| Device | Package Type | Package Drawing | Pins | SPQ | Length (mm) | Width (mm) | Height (mm) |
|--------------------|--------------|-----------------|------|------|-------------|------------|-------------|
| CD74HC4051QPWRG4Q1 | TSSOP | PW | 16 | 2000 | 367.0 | 367.0 | 35.0 |
| CD74HC4051QPWRQ1 | TSSOP | PW | 16 | 2000 | 367.0 | 367.0 | 35.0 |

D (R-PDSO-G16)

PLASTIC SMALL OUTLINE



4040047-6/M 06/11

- NOTES:
- A. All linear dimensions are in inches (millimeters).
 - B. This drawing is subject to change without notice.
 -  C. Body length does not include mold flash, protrusions, or gate burrs. Mold flash, protrusions, or gate burrs shall not exceed 0.006 (0,15) each side.
 -  D. Body width does not include interlead flash. Interlead flash shall not exceed 0.017 (0,43) each side.
 - E. Reference JEDEC MS-012 variation AC.

D (R-PDSO-G16)

PLASTIC SMALL OUTLINE



- NOTES:
- All linear dimensions are in millimeters.
 - This drawing is subject to change without notice.
 - Publication IPC-7351 is recommended for alternate designs.
 - Laser cutting apertures with trapezoidal walls and also rounding corners will offer better paste release. Customers should contact their board assembly site for stencil design recommendations. Refer to IPC-7525 for other stencil recommendations.
 - Customers should contact their board fabrication site for solder mask tolerances between and around signal pads.



4220204/A 02/2017

NOTES:

1. All linear dimensions are in millimeters. Any dimensions in parenthesis are for reference only. Dimensioning and tolerancing per ASME Y14.5M.
2. This drawing is subject to change without notice.
3. This dimension does not include mold flash, protrusions, or gate burrs. Mold flash, protrusions, or gate burrs shall not exceed 0.15 mm per side.
4. This dimension does not include interlead flash. Interlead flash shall not exceed 0.25 mm per side.
5. Reference JEDEC registration MO-153.

EXAMPLE BOARD LAYOUT

PW0016A

TSSOP - 1.2 mm max height

SMALL OUTLINE PACKAGE



LAND PATTERN EXAMPLE
EXPOSED METAL SHOWN
SCALE: 10X



4220204/A 02/2017

NOTES: (continued)

- 6. Publication IPC-7351 may have alternate designs.
- 7. Solder mask tolerances between and around signal pads can vary based on board fabrication site.

EXAMPLE STENCIL DESIGN

PW0016A

TSSOP - 1.2 mm max height

SMALL OUTLINE PACKAGE



SOLDER PASTE EXAMPLE
BASED ON 0.125 mm THICK STENCIL
SCALE: 10X

4220204/A 02/2017

NOTES: (continued)

8. Laser cutting apertures with trapezoidal walls and rounded corners may offer better paste release. IPC-7525 may have alternate design recommendations.
9. Board assembly site may have different recommendations for stencil design.

IMPORTANT NOTICE AND DISCLAIMER

TI PROVIDES TECHNICAL AND RELIABILITY DATA (INCLUDING DATASHEETS), DESIGN RESOURCES (INCLUDING REFERENCE DESIGNS), APPLICATION OR OTHER DESIGN ADVICE, WEB TOOLS, SAFETY INFORMATION, AND OTHER RESOURCES "AS IS" AND WITH ALL FAULTS, AND DISCLAIMS ALL WARRANTIES, EXPRESS AND IMPLIED, INCLUDING WITHOUT LIMITATION ANY IMPLIED WARRANTIES OF MERCHANTABILITY, FITNESS FOR A PARTICULAR PURPOSE OR NON-INFRINGEMENT OF THIRD PARTY INTELLECTUAL PROPERTY RIGHTS.

These resources are intended for skilled developers designing with TI products. You are solely responsible for (1) selecting the appropriate TI products for your application, (2) designing, validating and testing your application, and (3) ensuring your application meets applicable standards, and any other safety, security, or other requirements. These resources are subject to change without notice. TI grants you permission to use these resources only for development of an application that uses the TI products described in the resource. Other reproduction and display of these resources is prohibited. No license is granted to any other TI intellectual property right or to any third party intellectual property right. TI disclaims responsibility for, and you will fully indemnify TI and its representatives against, any claims, damages, costs, losses, and liabilities arising out of your use of these resources.

TI's products are provided subject to TI's Terms of Sale (www.ti.com/legal/termsofsale.html) or other applicable terms available either on ti.com or provided in conjunction with such TI products. TI's provision of these resources does not expand or otherwise alter TI's applicable warranties or warranty disclaimers for TI products.

Mailing Address: Texas Instruments, Post Office Box 655303, Dallas, Texas 75265
Copyright © 2019, Texas Instruments Incorporated

Looking for pricing, stock, or lifecycle information?

Click below to explore more details on WIN SOURCE:

 [View CD74HC4051QPWRQ1 on WIN SOURCE](#)

 [Texas Instruments](#) Information

Optimize Your Supply Chain with WIN SOURCE Solutions

-  Global Sourcing Solution
-  Obsolete Management
-  Cost Control Management
-  Shortage Management
-  Alternative Solution
-  Excess Inventory Management