



THE DATASHEET OF
292132-4



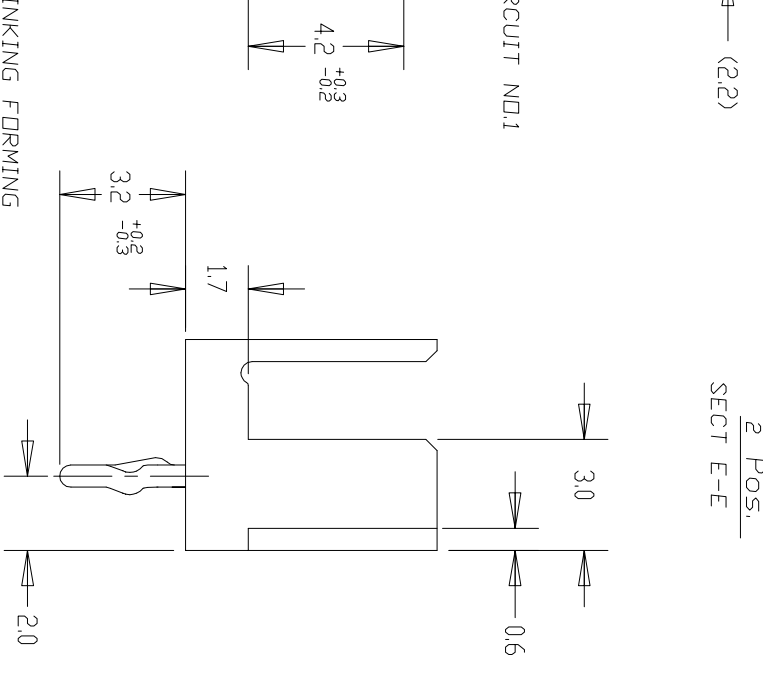
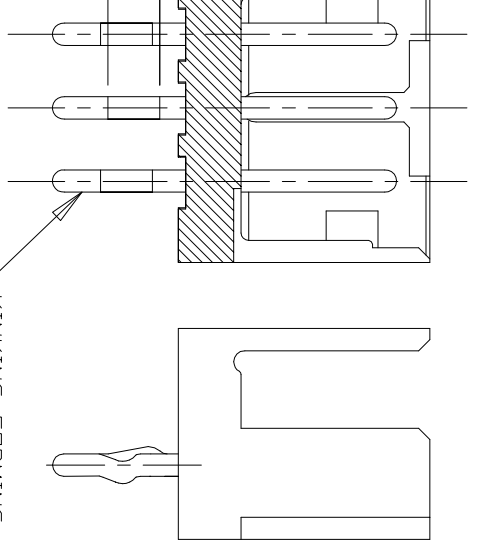
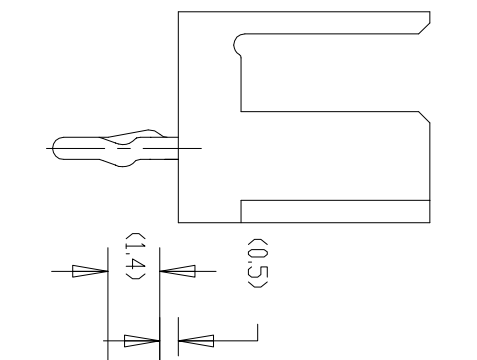
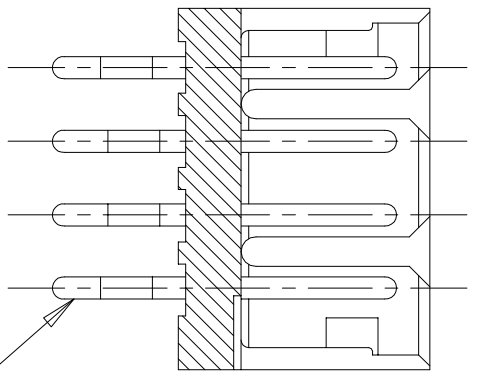
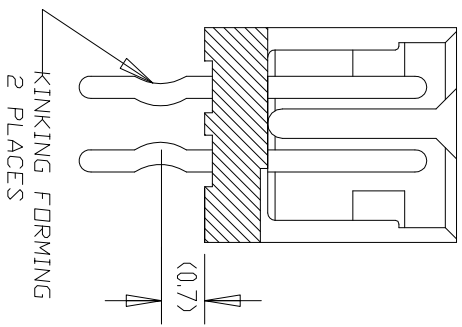
3
20
REV'D.

LDC FB
DIST 00

| REVISONS | | DESCRIPTION | DATE | DWN | APVD |
|----------|-----|--------------------------|---------|-----|------|
| P | LTR | | | | |
| | | A2 REVISED ECR-14-006619 | 06MAY14 | T.Q | W.H |

NOTES;

- △ MATERIAL:HDUSING - 66 NYLON (UL94V-0)
- POST - TIN BRASS
- △ 7-292132-3 WAS OBSOLETEED.

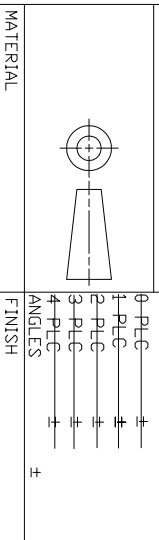


| | | | | | | | | |
|------------|------------|------------|------------|------|----|------|------|------|
| 7-292132-5 | 5-292132-5 | 3-292132-5 | 1-292132-5 | 15 | 28 | 31.8 | 25.2 | 31.0 |
| 7-4 | 5-4 | 3-4 | 1-4 | 14 | 26 | 29.8 | 23.2 | 29.0 |
| 7-3 | 5-3 | 3-3 | 1-3 | 13 | 24 | 27.8 | 21.2 | 27.0 |
| 7-2 | 5-2 | 3-2 | 1-2 | 12 | 22 | 25.8 | 19.2 | 25.0 |
| 7-1 | 5-1 | 3-1 | 1-1 | 11 | 20 | 23.8 | 17.2 | 23.0 |
| 6-0 | 5-0 | 3-0 | 1-0 | 10 | 18 | 21.8 | 15.2 | 21.0 |
| 6-9 | 4-9 | 2-9 | 0-9 | 9 | 16 | 19.8 | 13.2 | 19.0 |
| 6-8 | 4-8 | 2-8 | 0-8 | 8 | 14 | 17.8 | 11.2 | 17.0 |
| 6-7 | 4-7 | 2-7 | 0-7 | 7 | 12 | 15.8 | 9.2 | 15.0 |
| 6-6 | 4-6 | 2-6 | 0-6 | 6 | 10 | 13.8 | 7.2 | 13.0 |
| 6-5 | 4-5 | 2-5 | 0-5 | 5 | 8 | 11.8 | 5.2 | 11.0 |
| 6-4 | 4-4 | 2-4 | 0-4 | 4 | 6 | 9.8 | 3.2 | 9.0 |
| 6-3 | 4-3 | 2-3 | 0-3 | 3 | 4 | 7.8 | — | 7.0 |
| 6-292132-2 | 4-292132-2 | 2-292132-2 | 292132-2 | 2 | 2 | 5.8 | — | 5.0 |
| RED | BLACK | YELLOW | BLUE | Pos. | A | B | C | D |

THIS DRAWING IS A CONTROLLED DOCUMENT FOR TYCO ELECTRONICS CORPORATION
IT IS SUBJECT TO CHANGE AND THE CONTROLLING ENGINEERING ORGANIZATION
SHOULD BE CONTACTED FOR THE LATEST REVISION

DIMENSIONS:
mm

TOLERANCES UNLESS OTHERWISE SPECIFIED:
±0.2



DWN 23JAN03
CHK S.YAD
APVD T.SASAKI
PRODUCT SPEC 108-60016
APPLICATION SPEC


NAME
tyco Tyco Electronics Corporation
Electronics Shanghai, P.R.China,200233

SIZE A3
CAGE CODE 00779
DRAWING NO ©=292132
SCALE 5:1
SHEET 1 OF 2
REV A2

CUSTOMER DRAWING
POST HEADER ASS'Y (BDX-V DIP)
(AMP CT CONNECTOR 2mm PITCH)





Looking for pricing, stock, or lifecycle information?

Click below to explore more details on WIN SOURCE:

 [View 292132-4 on WIN SOURCE](#)

 [TE Connectivity Information](#)

Optimize Your Supply Chain with WIN SOURCE Solutions

-  Global Sourcing Solution
-  Obsolete Management
-  Cost Control Management
-  Shortage Management
-  Alternative Solution
-  Excess Inventory Management