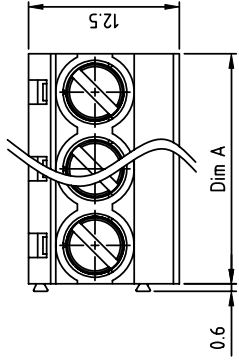




**THE DATASHEET OF
T71203500000G**

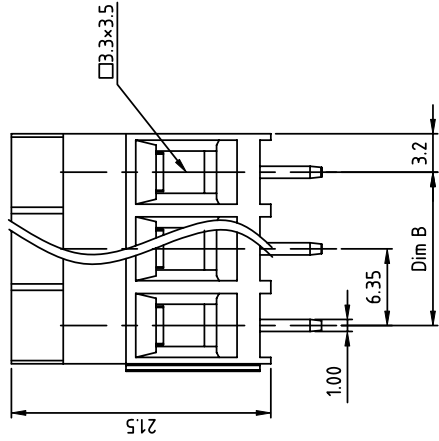


PRODUCT NUMBER	PITCH
T7xx03x00J0G	6.35 mm

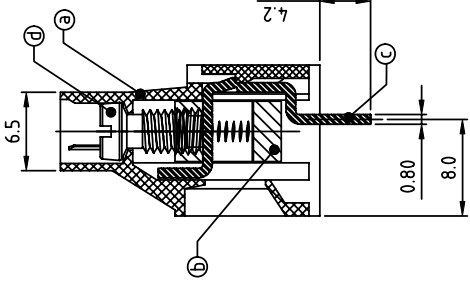


0.6

Dim A



A



PART NO.: T7 XX 0 3 X 0 00J0 G

N = Number of poles
 Dim A = N x 6.35
 Dim B = (N - 1) x 6.35

Poles	Tolerance
2-6p	±0.15
7-11p	±0.25
12-16p	±0.35

- End Stackable 0 Black (RAL9005)
 - No. of poles 02 2 poles
 - 03 3 poles
 - ... 16 poles
 - Body Color 2 Red (RAL3001/D)
 - 3 Orange (RAL2011/P)
 - 4 Yellow (RAL1018/A)
 - 5 Green (RAL6018/T)
 - 6 Blue (RAL5015/A)
 - 8 Grey (RAL7035/D)
 - 9 White (RAL1102)
 - C Green (RAL6018/U)
- RoHS compliant (lead<4%) In copper Alloy

mat'l. code		date		surface	
itr	ecn no	dr	HF	ASME	Y14.5
B	T-19284		081414	tolerances unless off	A
				angles	>
				X	±1°
				dr	EVIN ZHONG
				engr	EVIN ZHONG
				chr	HANKE FEN
				appd	SHI JUN
sheet	revision	B			
index	sheet	1			

form: A4mmXLc



1

2

B

Looking for pricing, stock, or lifecycle information?

Click below to explore more details on WIN SOURCE:

-  [View T71203500000G on WIN SOURCE](#)
-  [Amphenol Anytek Information](#)

Optimize Your Supply Chain with WIN SOURCE Solutions

-  Global Sourcing Solution
-  Obsolete Management
-  Cost Control Management
-  Shortage Management
-  Alternative Solution
-  Excess Inventory Management