



**THE DATASHEET OF
NS6A13AFT3G**



NS6A5.0AFT3G, SZNS6A5.0AFT3G Series

500 Watt Peak Power Zener Transient Voltage Suppressors

Unidirectional

The NS6AxxAFT3G series is designed to protect voltage sensitive components from high voltage, high energy transients. This device has excellent clamping capability, high surge capability, low zener impedance and fast response time. The NS6AxxAFT3G series is ideally suited for use in computer hard disk drives, communication systems, automotive, numerical controls, process controls, medical equipment, business machines, power supplies and many other industrial/consumer applications.

Specification Features:

- Peak Reverse Working Voltage Range – 5 V to 64 V
- Peak Pulse Power of 500 W (10 x 1000 μ sec)
- ESD Rating of Class 3 (>16 kV) per Human Body Model
- ESD Rating of Class 4 (>8 kV) IEC 61000–4–2
- Fast Response Time
- Low Profile Package
- SZ Prefix for Automotive and Other Applications Requiring Unique Site and Control Change Requirements; AEC–Q101 Qualified and PPAP Capable
- These Devices are Pb–Free and are RoHS Compliant

Mechanical Characteristics:

CASE: Void-free, transfer-molded, thermosetting plastic

FINISH: All external surfaces are corrosion resistant and leads are readily solderable

MAXIMUM CASE TEMPERATURE FOR SOLDERING PURPOSES:
260°C for 10 Seconds

LEADS: Modified L–Bend providing more contact area to bond pads

POLARITY: Cathode indicated by polarity band

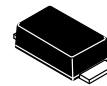
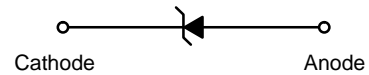
MOUNTING POSITION: Any



ON Semiconductor®

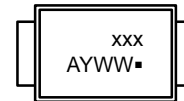
www.onsemi.com

PLASTIC SURFACE MOUNT ZENER OVERVOLTAGE TRANSIENT SUPPRESSORS



SMA–FL
CASE 403AA

MARKING DIAGRAM



- xxx = Specific Device Code
- A = Assembly Location
- Y = Year
- WW = Work Week
- = Pb–Free Package

ORDERING INFORMATION

Device	Package	Shipping†
NS6AxxAFT3G, SZNS6AxxAFT3G	SMA–FL (Pb–Free)	5000 / Tape & Reel

†For information on tape and reel specifications, including part orientation and tape sizes, please refer to our Tape and Reel Packaging Specifications Brochure, BRD8011/D.

NS6A5.0AFT3G, SZNS6A5.0AFT3G Series

MAXIMUM RATINGS

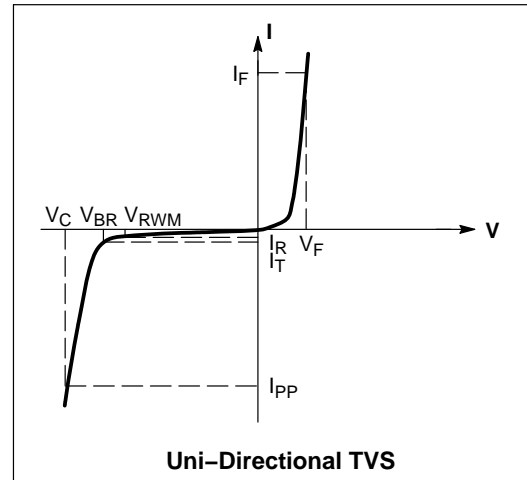
Rating	Symbol	Value	Unit
Peak Power Dissipation (Note 1) @ $T_L = 25^\circ\text{C}$, Pulse Width = 1 ms	P_{PK}	500	W
DC Power Dissipation @ $T_L = 75^\circ\text{C}$ Measured Zero Lead Length (Note 2) Derate Above 75°C	P_D	1.5	W
Thermal Resistance from Junction-to-Lead	$R_{\theta JL}$	20	mW/ $^\circ\text{C}$
		50	$^\circ\text{C}/\text{W}$
DC Power Dissipation (Note 3) @ $T_A = 25^\circ\text{C}$ Derate Above 25°C	P_D	0.5	W
Thermal Resistance from Junction-to-Ambient	$R_{\theta JA}$	4.0	mW/ $^\circ\text{C}$
		250	$^\circ\text{C}/\text{W}$
Forward Surge Current (Note 4) @ $T_A = 25^\circ\text{C}$	I_{FSM}	40	A
Operating and Storage Temperature Range	T_J, T_{stg}	-65 to +150	$^\circ\text{C}$

1. 10 X 1000 μs , non-repetitive.
2. 1 in square copper pad, FR-4 board.
3. FR-4 board, using ON Semiconductor minimum recommended footprint, as shown in 403AA case outline dimensions spec.
4. 1/2 sine wave (or equivalent square wave), PW = 8.3 ms, duty cycle = 4 pulses per minute maximum.

ELECTRICAL CHARACTERISTICS ($T_A = 25^\circ\text{C}$ unless otherwise noted, $V_F = 3.5\text{ V Max.}$ @ I_F (Note 5) = 30 A)

Symbol	Parameter
I_{PP}	Maximum Reverse Peak Pulse Current
V_C	Clamping Voltage @ I_{PP}
V_{RWM}	Working Peak Reverse Voltage
I_R	Maximum Reverse Leakage Current @ V_{RWM}
V_{BR}	Breakdown Voltage @ I_T
I_T	Test Current
I_F	Forward Current
V_F	Forward Voltage @ I_F

5. 1/2 sine wave (or equivalent square wave), PW = 8.3 ms, non-repetitive duty cycle.



NS6A5.0AFT3G, SZNS6A5.0AFT3G Series

ELECTRICAL CHARACTERISTICS

Device*	Device Marking	V _{RWM} (Note 6)	I _R @ V _{RWM}	Breakdown Voltage				V _C @ I _{PP} (Note 8)		C _{typ} (Note 9)
				V _{BR} (Note 7) Volts			@ I _T	V _C	I _{PP}	
				Min	Nom	Max	mA	V	A	
NS6A5.0AFT3G	6AA	5	800	6.4	6.70	7	10	9.2	65.2	2700
NS6A6.0AFT3G**	6AB	6	800	6.67	7.02	7.37	10	10.3	58.3	2300
NS6A6.5AFT3G**	6AC	6.5	500	7.22	7.60	7.98	10	11.2	53.6	2140
NS6A7.0AFT3G**	6AD	7	500	7.78	8.19	8.6	10	12	50	2005
NS6A7.5AFT3G**	6AE	7.5	100	8.33	8.77	9.21	1	12.9	46.5	1890
NS6A8.0AFT3G**	6AF	8	50	8.89	9.36	9.83	1	13.6	44.1	1780
NS6A8.5AFT3G	6AG	8.5	10	9.44	9.92	10.4	1	14.4	41.7	1690
NS6A9.0AFT3G**	6AH	9	5	10	10.55	11.1	1	15.4	39	1605
NS6A10AFT3G**	6AI	10	5	11.1	11.70	12.3	1	17	35.3	1460
NS6A11AFT3G**	6AL	11	5	12.2	12.85	13.5	1	18.2	33	1345
NS6A12AFT3G	6AJ	12	5	13.3	14.00	14.7	1	19.9	30.2	1245
NS6A13AFT3G	6AK	13	5	14.4	15.15	15.9	1	21.5	27.9	1160
NS6A14AFT3G**	6AM	14	5	15.6	16.40	17.2	1	23.2	20.5	1085
NS6A15AFT3G	6AN	15	5	16.7	17.60	18.5	1	24.4	20.0	1020
NS6A16AFT3G**	6AO	16	5	17.8	18.75	19.7	1	26	19.5	965
NS6A17AFT3G**	6AP	17	5	18.9	19.90	20.9	1	27.6	19.0	915
NS6A18AFT3G**	6AQ	18	5	20	21.05	22.1	1	29.2	18.5	870
NS6A20AFT3G**	6AR	20	5	22.2	23.35	24.5	1	32.4	17.5	790
NS6A22AFT3G	6AS	22	5	24.4	25.65	26.9	1	35.5	16.5	730
NS6A24AFT3G	6AT	24	5	26.7	28.10	29.5	1	38.9	15.4	675
NS6A26AFT3G**	6AU	26	5	28.9	30.40	31.9	1	42.1	14.2	630
NS6A28AFT3G	6AV	28	5	31.1	32.75	34.4	1	45.4	13.2	590
NS6A30AFT3G	6AW	30	5	33.3	35.05	36.8	1	48.4	12.4	555
NS6A33AFT3G	6AX	33	5	36.7	38.65	40.6	1	53.3	11.3	510
NS6A36AFT3G	6AY	36	5	40	42.10	44.2	1	58.1	10.3	470
NS6A40AFT3G**	6AZ	40	5	44.4	46.75	49.1	1	64.5	9.3	430
NS6A43AFT3G**	6A0	43	5	47.8	50.30	52.8	1	69.4	8.6	400
NS6A45AFT3G**	6A1	45	5	50	52.65	55.3	1	72.2	8.3	385
NS6A48AFT3G**	6A2	48	5	53.3	56.10	58.9	1	77.4	7.7	365
NS6A51AFT3G**	6A3	51	5	56.7	59.70	62.7	1	82.4	7.3	345
NS6A54AFT3G**	6A4	54	5	60	63.15	66.3	1	87.1	6.9	330
NS6A58AFT3G**	6A5	58	5	64.4	67.80	71.2	1	93.6	6.4	310
NS6A60AFT3G**	6A7	60	5	66.7	70.20	73.7	1	96.8	6.2	300
NS6A64AFT3G	6A8	64	5	71.1	74.85	78.6	1	103	5.8	280

*Includes SZ-prefix devices where applicable.

**In development. Contact local sales rep for availability.

6. A transient suppressor is normally selected according to the working peak reverse voltage (V_{RWM}), which should be equal to or greater than the DC or continuous peak operating voltage level.

7. V_{BR} measured at pulse test current I_T at an ambient temperature of 25°C.

8. Surge current waveform per Figure 1.

9. Bias Voltage = 0 V, F = 1 MHz, T_J = 25°C.

NS6A5.0AFT3G, SZNS6A5.0AFT3G Series

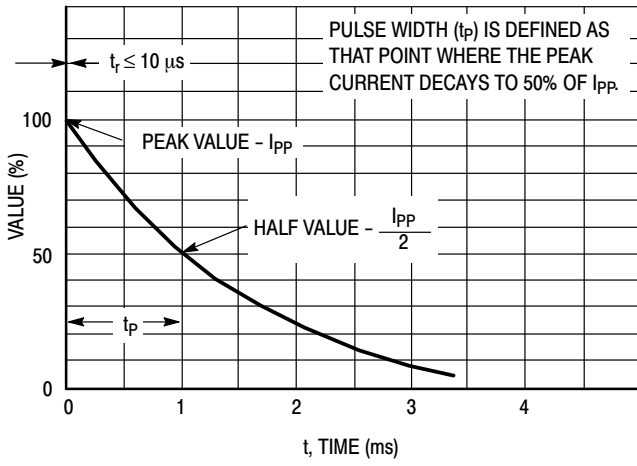


Figure 1. $10 \times 1000 \mu\text{s}$ Pulse Waveform

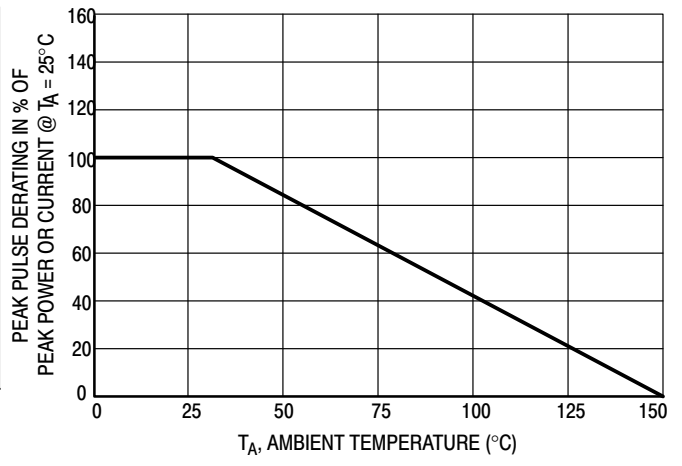


Figure 2. Pulse Derating Curve

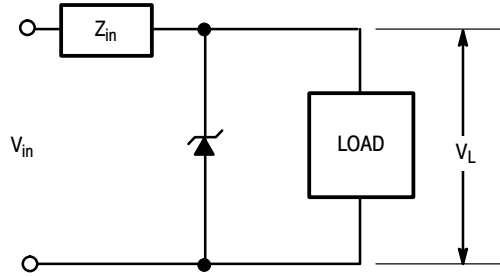
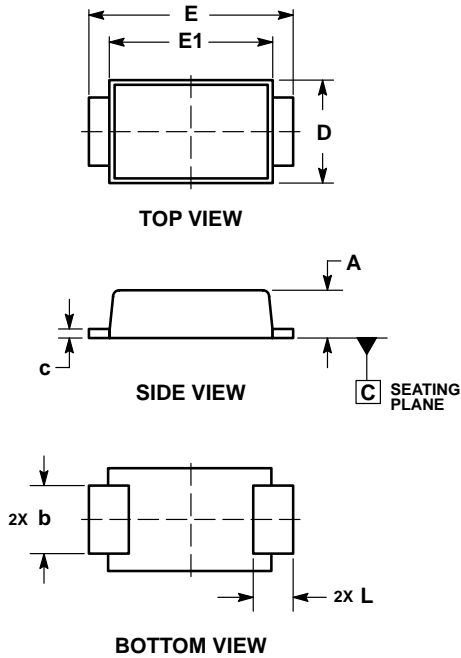


Figure 3. Typical Protection Circuit

NS6A5.0AFT3G, SZNS6A5.0AFT3G Series

PACKAGE DIMENSIONS

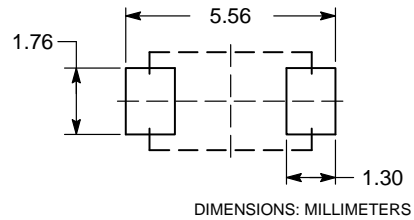
SMA-FL
CASE 403AA
ISSUE O



- NOTES:
1. DIMENSIONING AND TOLERANCING PER ASME Y14.5M, 1994.
 2. CONTROLLING DIMENSION: MILLIMETERS.

MILLIMETERS		
DIM	MIN	MAX
A	0.90	1.10
b	1.25	1.65
c	0.15	0.30
D	2.40	2.80
E	4.80	5.40
E1	4.00	4.60
L	0.70	1.10

RECOMMENDED SOLDER FOOTPRINT*



*For additional information on our Pb-Free strategy and soldering details, please download the ON Semiconductor Soldering and Mounting Techniques Reference Manual, SOLDERRM/D.

SURMETIC is a trademark of Semiconductor Components Industries, LLC.

ON Semiconductor and are trademarks of Semiconductor Components Industries, LLC dba ON Semiconductor or its subsidiaries in the United States and/or other countries. ON Semiconductor owns the rights to a number of patents, trademarks, copyrights, trade secrets, and other intellectual property. A listing of ON Semiconductor's product/patent coverage may be accessed at www.onsemi.com/site/pdf/Patent-Marking.pdf. ON Semiconductor reserves the right to make changes without further notice to any products herein. ON Semiconductor makes no warranty, representation or guarantee regarding the suitability of its products for any particular purpose, nor does ON Semiconductor assume any liability arising out of the application or use of any product or circuit, and specifically disclaims any and all liability, including without limitation special, consequential or incidental damages. Buyer is responsible for its products and applications using ON Semiconductor products, including compliance with all laws, regulations and safety requirements or standards, regardless of any support or applications information provided by ON Semiconductor. "Typical" parameters which may be provided in ON Semiconductor data sheets and/or specifications can and do vary in different applications and actual performance may vary over time. All operating parameters, including "Typicals" must be validated for each customer application by customer's technical experts. ON Semiconductor does not convey any license under its patent rights nor the rights of others. ON Semiconductor products are not designed, intended, or authorized for use as a critical component in life support systems or any FDA Class 3 medical devices or medical devices with a same or similar classification in a foreign jurisdiction or any devices intended for implantation in the human body. Should Buyer purchase or use ON Semiconductor products for any such unintended or unauthorized application, Buyer shall indemnify and hold ON Semiconductor and its officers, employees, subsidiaries, affiliates, and distributors harmless against all claims, costs, damages, and expenses, and reasonable attorney fees arising out of, directly or indirectly, any claim of personal injury or death associated with such unintended or unauthorized use, even if such claim alleges that ON Semiconductor was negligent regarding the design or manufacture of the part. ON Semiconductor is an Equal Opportunity/Affirmative Action Employer. This literature is subject to all applicable copyright laws and is not for resale in any manner.

PUBLICATION ORDERING INFORMATION

LITERATURE FULFILLMENT:
Literature Distribution Center for ON Semiconductor
P.O. Box 5163, Denver, Colorado 80217 USA
Phone: 303-675-2175 or 800-344-3860 Toll Free USA/Canada
Fax: 303-675-2176 or 800-344-3867 Toll Free USA/Canada
Email: orderlit@onsemi.com

N. American Technical Support: 800-282-9855 Toll Free
USA/Canada
Europe, Middle East and Africa Technical Support:
Phone: 421 33 790 2910
Japan Customer Focus Center
Phone: 81-3-5817-1050

ON Semiconductor Website: www.onsemi.com
Order Literature: <http://www.onsemi.com/orderlit>

For additional information, please contact your local Sales Representative

Looking for pricing, stock, or lifecycle information?

Click below to explore more details on WIN SOURCE:

 [View NS6A13AFT3G on WIN SOURCE](#)

 [Littelfuse Inc. Information](#)

Optimize Your Supply Chain with WIN SOURCE Solutions

-  Global Sourcing Solution
-  Obsolete Management
-  Cost Control Management
-  Shortage Management
-  Alternative Solution
-  Excess Inventory Management