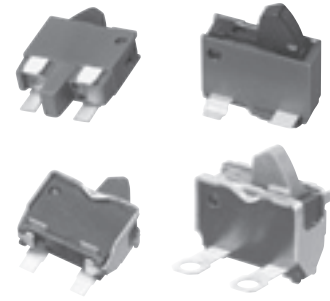


### ESE22 Detector Switches

Type: **ESE22**



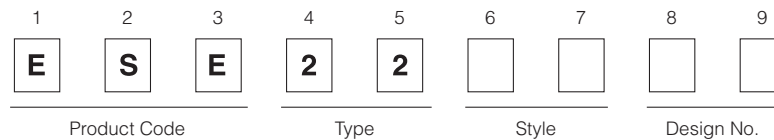
#### ■ Features

- Can be operated with different actuation angles (horizontally and vertically)
- Reflow soldering
- Light operating force

#### ■ Recommended Applications

- Detection of media in portable electronic equipment

#### ■ Explanation of Part Numbers

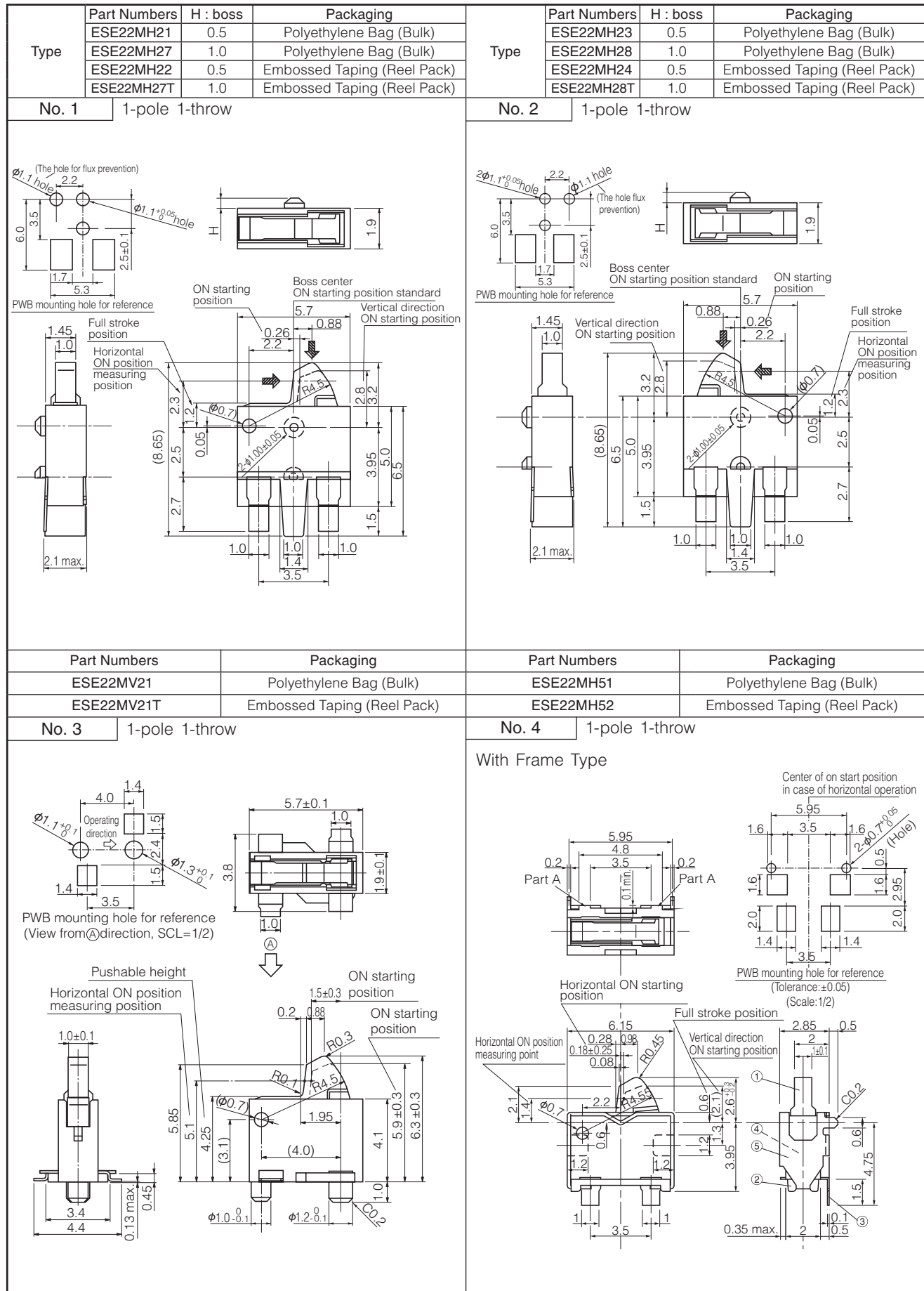


#### ■ Specifications

Rating	50 $\mu$ A 3 V DC to 10 mA 5 V DC (Resistive load)
Contact Resistance	500 m $\Omega$ max. (Initial)
Insulation Resistance	100 M $\Omega$ min. (at 100 V DC for 1 minute)
Dielectric Withstanding Voltage	100 V AC (50 Hz or 60 Hz) for 1 minute
Operating Force	290 mN max.
Mounting Height	<ul style="list-style-type: none"> <li>· ESE22MV Type                      4.1 mm</li> <li>· ESE22MH Type                    2.1 mm</li> <li>· ESE22MH Type with Frame    2.85 mm</li> </ul>
Poles and Throws	1-pole 1-throw
Full Travel (Pushing distance)	<ul style="list-style-type: none"> <li>· ESE22MV Type                    4.25 mm(2.05 mm)</li> <li>· ESE22MH Type                    1.2 mm(2.0 mm)</li> <li>· ESE22MH Type with Frame    0.6 mm(2.0 mm)</li> </ul>
Operating Life	50,000 cycles min.
Temperature Range	-10 °C to +70 °C (Standard), -40 °C to +85 °C (Automotive)
Heat Resistance	+80 °C for 96 hours
Low Temperature Resistance	-25 °C for 96 hours
Humidity Resistance	+40 °C 90 % to 95 % RH for 96 hours
Minimum Quantity/Packing Unit	500 pcs. Polyethylene Bag (Bulk)
	<ul style="list-style-type: none"> <li>· ESE22MV Type                    1,000 pcs. Embossed Taping (Reel Pack)</li> <li>· ESE22MH Type with Frame    3,000 pcs. Embossed Taping (Reel Pack)</li> <li>· ESE22MH Type                    4,000 pcs. Embossed Taping (Reel Pack)</li> </ul>
	10,000 pcs. Polyethylene Bag (Bulk)
Quantity/Carton	10,000 pcs. Polyethylene Bag (Bulk)
	<ul style="list-style-type: none"> <li>· ESE22MV Type                    6,000 pcs. Embossed Taping (Reel Pack)</li> <li>· ESE22MH Type with Frame    18,000 pcs. Embossed Taping (Reel Pack)</li> <li>· ESE22MH Type                    24,000 pcs. Embossed Taping (Reel Pack)</li> </ul>

Design and specifications are each subject to change without notice. Ask factory for the current technical specifications before purchase and/or use. Should a safety concern arise regarding this product, please be sure to contact us immediately.

■ Dimensions in mm (not to scale)





Design and specifications are each subject to change without notice. Ask factory for the current technical specifications before purchase and/or use. Should a safety concern arise regarding this product, please be sure to contact us immediately.



## Looking for pricing, stock, or lifecycle information?

Click below to explore more details on WIN SOURCE:

-  [View ESE-22MH52 on WIN SOURCE](#)
-  [Panasonic Information](#)

## Optimize Your Supply Chain with WIN SOURCE Solutions

-  Global Sourcing Solution
-  Obsolete Management
-  Cost Control Management
-  Shortage Management
-  Alternative Solution
-  Excess Inventory Management