



THE DATASHEET OF CDBA120L-G

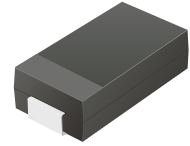


CDBA120L-G Thru. CDBA140SL-G

Reverse Voltage: 20 to 40 Volts

Forward Current: 1.0 Amp

RoHS Device

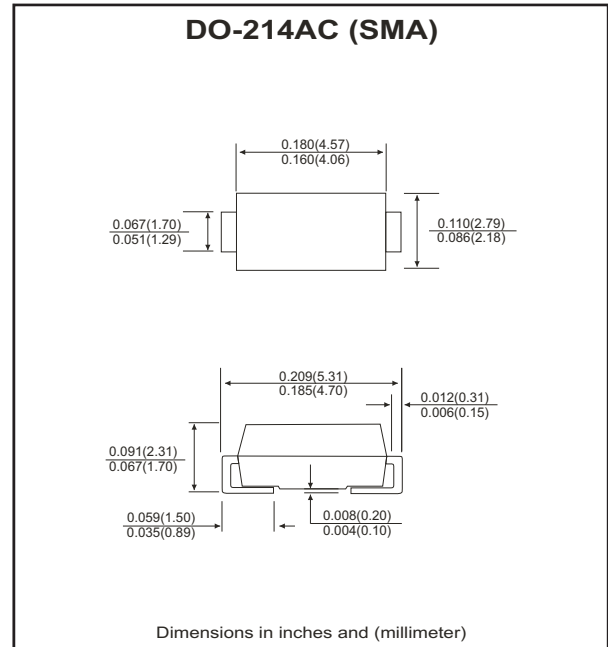


Features

- Ideal for surface mount applications.
- Easy pick and place.
- Plastic package has Underwriters Lab. flammability classification 94V-0.
- Built in strain relief.
- Super low forward voltage drop.

Mechanical data

- Case: JEDEC DO-214AC, molded plastic.
- Terminals: solderable per MIL-STD-750, method 2026.
- Polarity: Color band denotes cathode end.
- Approx. weight: 0.063 grams



Maximum Ratings and Electrical Characteristics

Single phase half wave, 60Hz, resistive or inductive load. For capacitive load, derate current by 20%.

Parameter	Symbol	CDBA 120L-G	CDBA 120LL-G	CDBA 140L-G	CDBA 140LL-G	CDBA 140SL-G	Units	
Max. repetitive peak reverse voltage	V_{RRM}	20	20	40	40	40	V	
Max. DC blocking voltage	V_{DC}	20	20	40	40	40	V	
Max. RMS voltage	V_{RMS}	14	14	28	28	28	V	
Peak surge forward current, 8.3ms single half sine-wave superimposed on rate load (JEDEC method)	I_{FSM}	35						A
Max. average forward current	I_o	1.0						A
Max. instantaneous forward voltage at 1.0A	V_F	0.38	0.31	0.40	0.34	0.31	V	
Max. DC reverse current at rated DC blocking voltage	I_R	1.0 40						mA
Max. thermal resistance (Note 1)	$R_{\theta JA}$	88						°C/W
	$R_{\theta JL}$	20						
Max. operating junction temperature	T_J	125						°C
Storage temperature	T_{STG}	-55 to +125						°C

Notes: 1. Thermal resistance from junction to ambient and junction to lead, P.C.B. mounted on 0.2×0.2 inch copper pad area.

RATING AND CHARACTERISTIC CURVES (CDBA120L-G thru CDBA140SL-G)

Fig.1 Reverse Characteristics

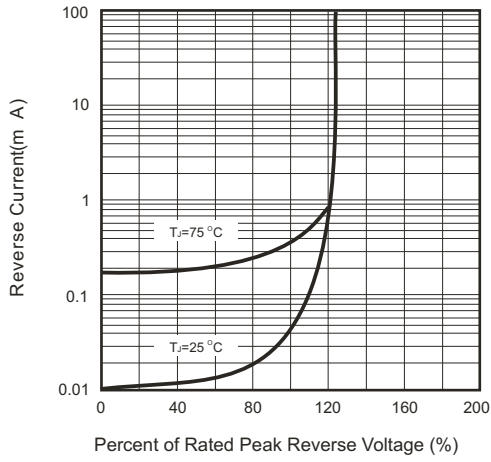


Fig.2 Forward Characteristics

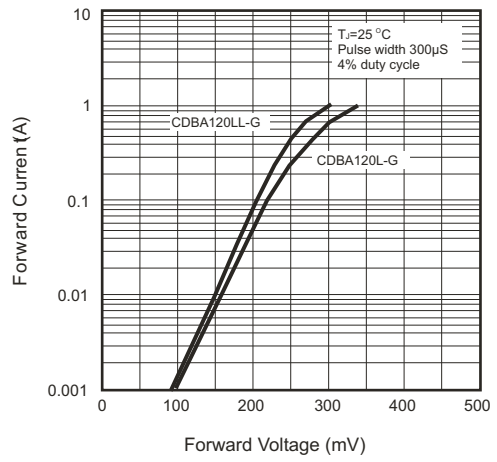


Fig.3 Junction Capacitance

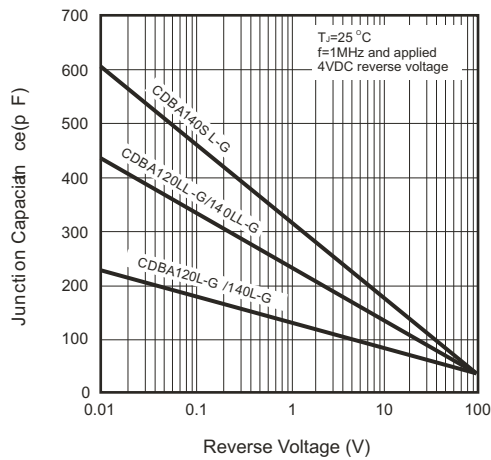


Fig.4 Forward Characteristics

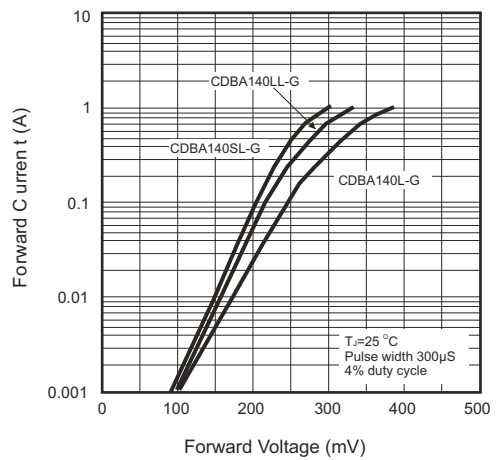


Fig.5 Non-repetitive Forward Surge Current

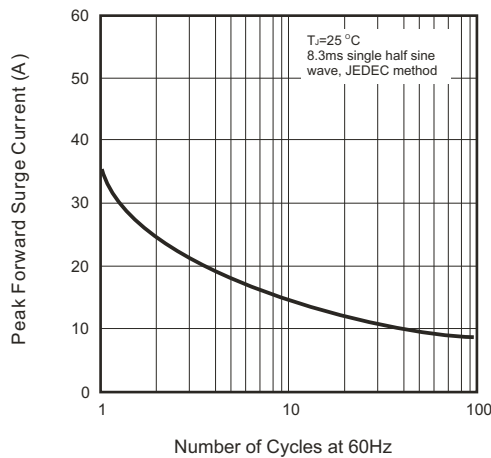
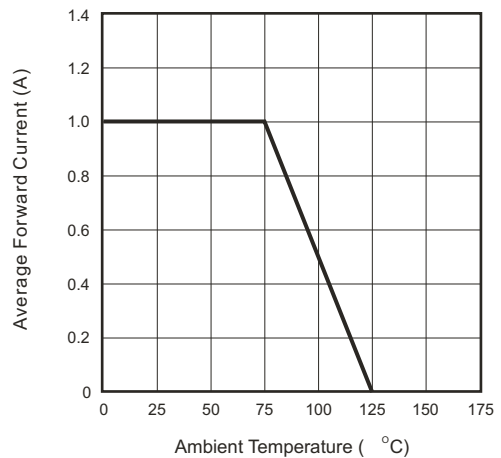




Fig.6 Current Derating Curve



Looking for pricing, stock, or lifecycle information?

Click below to explore more details on WIN SOURCE:

-  [View CDBA120L-G on WIN SOURCE](#)
-  [Comchip Technology Information](#)

Optimize Your Supply Chain with WIN SOURCE Solutions

-  Global Sourcing Solution
-  Obsolete Management
-  Cost Control Management
-  Shortage Management
-  Alternative Solution
-  Excess Inventory Management