



**THE DATASHEET OF
VLS252015T-1R0N1R7**



SMD Inductors(Coils) For Power Line(Wound, Magnetic Shielded)

Conformity to RoHS Directive

VLS Series VLS252015

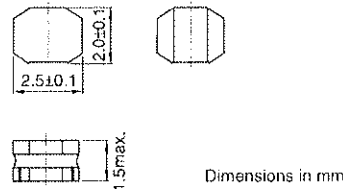
FEATURES

- Miniature size
Mount area: 2.5×2mm
Height: 1.5mm max.
- Generic use for portable DC to DC converter line.
- High magnetic shield construction should actualize high resolution for EMC protection.
- Available for automatic mounting in tape and reel package.
- The products do not contain lead and support lead-free soldering.

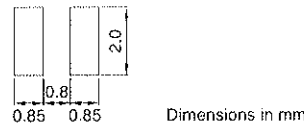
APPLICATIONS

DVCs, DSCs, PDAs, LCD displays, cellular phones, HDDs, etc.

SHAPES AND DIMENSIONS



RECOMMENDED PC BOARD PATTERN



ELECTRICAL CHARACTERISTICS

| Part No. | Inductance (μH) | Inductance tolerance (%) | Test frequency (MHz) | DC resistance (Ω) | | Rated current(A)* Based on inductance change | | Based on temperature rise typ. |
|--------------------|-----------------|--------------------------|----------------------|-------------------|-------|---|------|--------------------------------|
| | | | | max. | typ. | max. | typ. | |
| VLS252015T-1R0N1R7 | 1 | ±30 | 1 | 0.082 | 0.068 | 2.3 | 2.62 | 1.7 |
| VLS252015T-1R5N1R4 | 1.5 | ±30 | 1 | 0.12 | 0.1 | 1.9 | 2.18 | 1.4 |
| VLS252015T-2R2M1R2 | 2.2 | ±20 | 1 | 0.16 | 0.133 | 1.7 | 1.9 | 1.2 |
| VLS252015T-3R3M1R0 | 3.3 | ±20 | 1 | 0.218 | 0.182 | 1.4 | 1.57 | 1 |
| VLS252015T-4R7MR89 | 4.7 | ±20 | 1 | 0.318 | 0.265 | 1.2 | 1.35 | 0.89 |
| VLS252015T-6R8MR73 | 6.8 | ±20 | 1 | 0.48 | 0.4 | 1 | 1.13 | 0.73 |
| VLS252015T-100MR66 | 10 | ±20 | 1 | 0.588 | 0.49 | 0.82 | 0.93 | 0.66 |

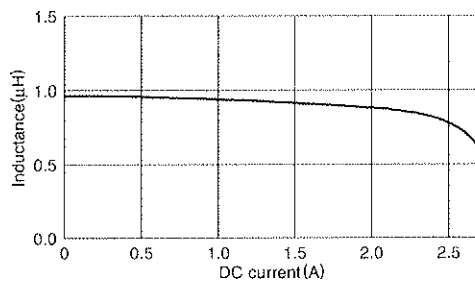
* Rated current: Value obtained when current flows and the temperature has risen to 40°C or when DC current flows and the nominal value of inductance has fallen by 30%, whichever is smaller.

- Operating temperature range: -40 to +105°C (Including self-temperature rise)

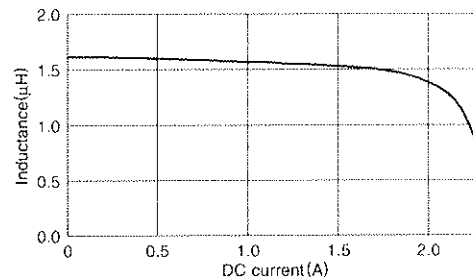
TYPICAL ELECTRICAL CHARACTERISTICS

INDUCTANCE vs. DC SUPERPOSITION CHARACTERISTICS

VLS252015T-1R0N1R7



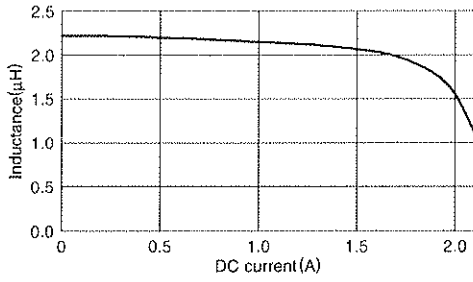
VLS252015T-1R5N1R4



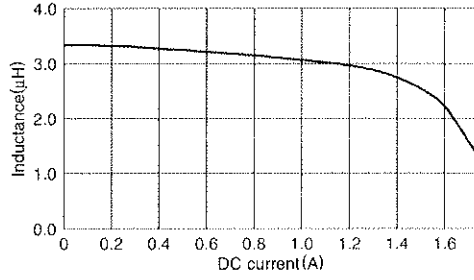
- Conformity to RoHS Directive: This means that, in conformity with EU Directive 2002/95/EC, lead, cadmium, mercury, hexavalent chromium, and specific bromine-based flame retardants, PBB and PBDE, have not been used, except for exempted applications.

- All specifications are subject to change without notice.

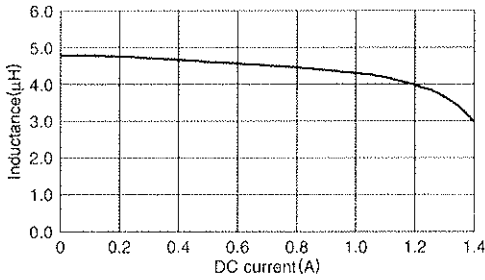
TYPICAL ELECTRICAL CHARACTERISTICS
INDUCTANCE vs. DC SUPERPOSITION CHARACTERISTICS
VLS252015T-2R2M1R2



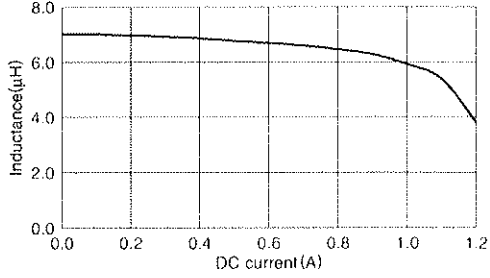
VLS252015T-3R3M1R0



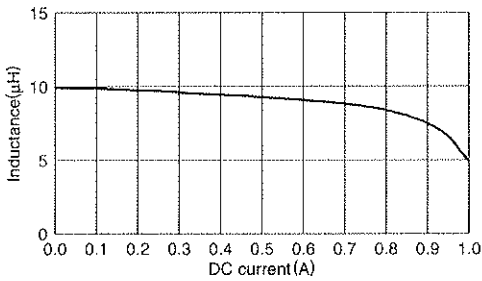
VLS252015T-4R7MR89



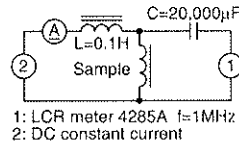
VLS252015T-6R8MR73



VLS252015T-100MR66



TEST CIRCUIT



• All specifications are subject to change without notice.

Looking for pricing, stock, or lifecycle information?

Click below to explore more details on WIN SOURCE:

 [View VLS252015T-1R0N1R7 on WIN SOURCE](#)

 [TDK Corporation Information](#)

Optimize Your Supply Chain with WIN SOURCE Solutions

-  Global Sourcing Solution
-  Obsolete Management
-  Cost Control Management
-  Shortage Management
-  Alternative Solution
-  Excess Inventory Management