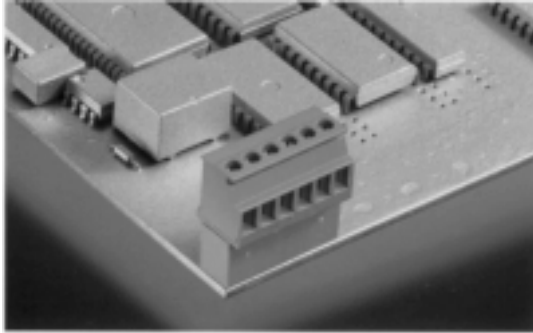




# THE DATASHEET OF EDSTLZ950/2



# EDZ1710/X



2-20 poles, Spacing 3.81 mm  
insert required no. of poles **x**  
How to order see page 5



**Ratings:**

Rated Voltage	<b>300 V</b>	<b>160 V</b>
Rated Current	<b>8 A</b>	<b>9 A (T60)</b>
Wire Size	<b>AWG 28-16</b>	<b>1.5 mm<sup>2</sup></b>
Test Voltage		<b>4 kV/3</b>
Rated Torque/ScrewSize		<b>0.4 Nm/M2</b>

**Max. Rated Cross Section**

Single Wire (solid)	<b>1.5 mm<sup>2</sup></b>
Stranded Wire (flexible)	<b>1.0 mm<sup>2</sup></b>
Stranded wire with Ferrules	<b>1.0 mm<sup>2</sup></b>

**Dimensions**

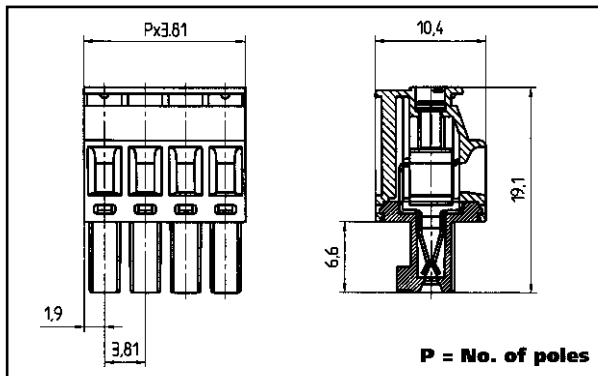
Spacing	<b>3.81 mm</b>
Stripped Length	<b>7.0 mm</b>

**Materials**

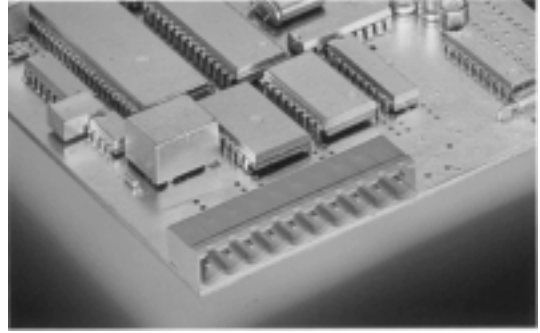
Insulating Material	<b>PA</b>
Flammability Class	<b>UL94 V-0</b>
Temperature Range	<b>-30°C/+105°C</b>
Terminal Block	<b>CuZn</b>
Contact	<b>CuSn</b>

**Color**

Green



# EDSTL950/X (5.0 mm) EDSTLZ950/X (5.08 mm)



2-24 poles, Spacing 5.0 mm or 5.08 mm  
insert required no. of poles **x**  
How to order see page 5



**Ratings:**

Rated Voltage	<b>300 V</b>	<b>250 V</b>
Rated Current	<b>15 A</b>	<b>12 A (T60)</b>
Rating Impulse Voltage/Dirt Level		<b>4 kV/3</b>

**Dimensions**

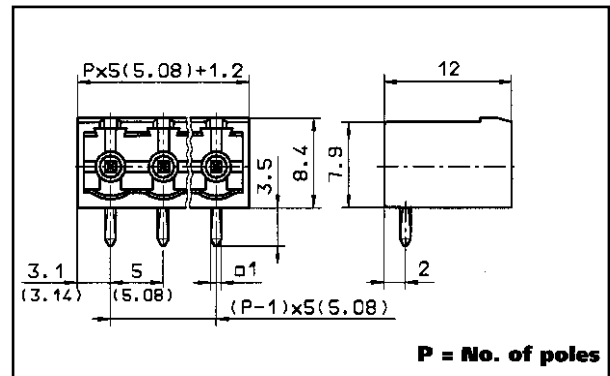
Spacing	<b>5.0 mm (5.08 mm)</b>
PCB Hole Diameter	<b>1.4 mm</b>

**Materials**

Insulating Material	<b>PA/PBTP</b>
Flammability Class	<b>UL94 V-0</b>
Temperature Range	<b>-30°C/+105°C</b>
Contact Pin	<b>Cu</b>


**Color**

Green



## Looking for pricing, stock, or lifecycle information?

Click below to explore more details on WIN SOURCE:

-  [View EDSTLZ950/2 on WIN SOURCE](#)
-  [On Shore Technology Inc. Information](#)

## Optimize Your Supply Chain with WIN SOURCE Solutions

-  Global Sourcing Solution
-  Obsolete Management
-  Cost Control Management
-  Shortage Management
-  Alternative Solution
-  Excess Inventory Management