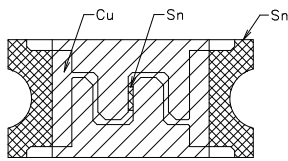
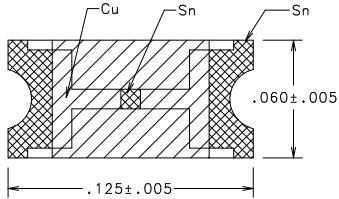
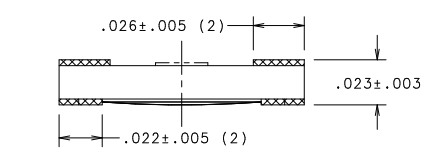
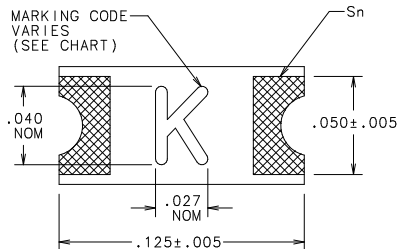




**THE DATASHEET OF
04661.25NR**

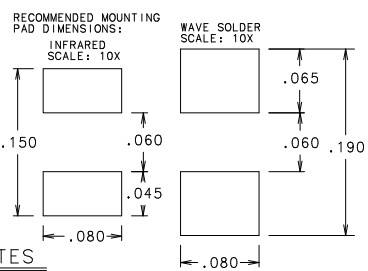


CATALOG NO	RATING (AMPS)	VOLTAGE RATING	INTERRUPTING RATING	COLD RESIST. mOHMS	VOLTAGE DROP NOM V	MARKING CODE
0466.125NR	1/8	125V	50A	1500-2500	-	B
0466.200NR	.200	125V	50A	690-1185	-	C
0466.250NR	1/4	125V	50A	440-800	-	D
0466.375NR	3/8	125V	50A	300-460	-	E
0466.500NR	1/2	63V	50A	180-305	-	F
0466.750NR	.75	63V	50A	88-124	-	G
0466001.NR	1.0	63V	50A	63-87	-	H
04661.25NR	1-1/4	63V	50A	48-66	-	J
046601.5NR	1-1/2	63V	50A	39-52	-	K
04661.75NR	1-3/4	63V	50A	32-43	-	L
0466002.NR	2	63V	50A	26-34	-	N
046602.5NR	2-1/2	32V	50A	20-26	-	O
0466003.NR	3.0	32V	50A	16-22	-	P
0466004.NR	4.0	24V	35A	12-16	-	S
0466005.NR	5.0	24V	35A	9.5-12.1	-	T
0466007.NR	7.0	24V	35A	6.5-8.3	-	U
0466010.NR	10.0	24V	35A	4.3-5.6	-	X



.200 AMP AND ABOVE

.125 AMP ONLY



NOTES

- CONSTRUCTION MATERIALS:
BODY: ADVANCED HIGH TEMPERATURE SUBSTRATE
TERMINATIONS: COPPER/NICKEL/TIN (MATTE FINISH)
COVER COAT: CONFORMAL COATING
- INSULATION RESISTANCE (AFTER OPENING):
EXCEED 10kΩ
- OPERATING TEMPERATURE RANGE:
-55°C TO 125°C
- VIBRATION:
WITHSTANDS 10-55 HZ PER MIL-STD-202F, METHOD 201A AND 10-2000 HZ AT 20G'S PER MIL-STD-202F, METHOD 204D, CONDITION D
- THERMAL SHOCK:
WITHSTANDS 5 CYCLES OF -55°C TO 125°C
- RESISTANCE TO SOLDERING HEAT:
WITHSTANDS 60 SECONDS ABOVE 200°C UP TO 260°C MAXIMUM.
- SOLDERING PARAMETERS:
WAVE SOLDER - 260°C, 10 SECONDS, MAX.
INFRARED SOLDER - 260°C, 30 SECONDS, MAX.
- PACKAGING:
8mm TAPE AND REEL PER EIA - RS481 (EQUIVALENT TO IEC 286 - 3); 5000 FUSES PER REEL.
- METER EXCITATION CURRENT MUST BE LESS THAN 10% OF FUSE RATING.

ELECTRICAL CHARACTERISTICS	
1 OF RATING	OPENING TIME
100%	4 HOURS MIN
200%	5 SECONDS MAX
300%	0.2 SECONDS MAX

1. MEASURED AT 10X RATED CURRENT, 25°C

NO COMPONENT NO		DESCRIPTION		QTY/M	U/M
BILL OF MATERIAL					
COP/LES TO		MATERIAL SPEC		FINISH	
1	9 18	DRW	DATE	SCALE	QTY.1 OR NOTED
2	10 19	JMB	DATE	SUPER DRW	
3	12 20	CHK	DATE	RAW STK WT	LBS/M
4	13 21	APPD	DATE	TOLERANCE UNLESS OTHERWISE SPECIFIED	
5	14 23			TWO PLACE DEC ±.010 FRACTION ±	
6	15 33			THREE PLACE DEC ±.005 ANGULAR ±1°	
7	16 43			SLIM 1206 "LEAD FREE" SMF FUSE	
8	17 53			(1206" CHIP SIZE)	
TITLE					
LTR		REVISION		CHK	APD
A	60806 - RELEASED	JMB			
				DRWA. NO.	OUTLINE
				REV. NO.	0466000.NR

UNLESS OTHERWISE SPECIFIED, DIMENSIONS DO NOT INCLUDE PLATING.

CPK DENOTES CRITICAL CHARACTERISTICS.

CPK DENOTES CPK DIMENSIONS - MINIMUM CPK VALUE

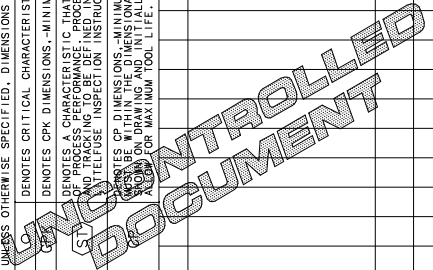
DENOTES A CHARACTERISTIC THAT PROVIDES AN INDICATION OF THE PROCESSING TO BE USED IN THE MANUFACTURING PROCEDURE FOR MEASUREMENT OF THIS CHARACTERISTIC. PLEASE REFER TO THE INSTRUCTIONS FOR MEASUREMENT.

CPK DENOTES CP DIMENSIONS - MINIMUM CP VALUE

CPK DENOTES CP DIMENSIONS - MINIMUM CP VALUE

CPK DENOTES CP DIMENSIONS - MINIMUM CP VALUE

CPK DENOTES CP DIMENSIONS - MINIMUM CP VALUE



Looking for pricing, stock, or lifecycle information?

Click below to explore more details on WIN SOURCE:

 [View 04661.25NR on WIN SOURCE](#)

 [Littelfuse Inc. Information](#)

Optimize Your Supply Chain with WIN SOURCE Solutions

-  Global Sourcing Solution
-  Obsolete Management
-  Cost Control Management
-  Shortage Management
-  Alternative Solution
-  Excess Inventory Management