

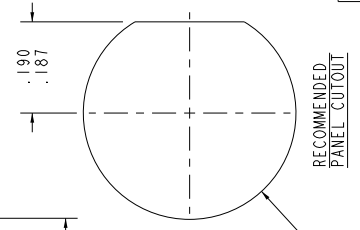
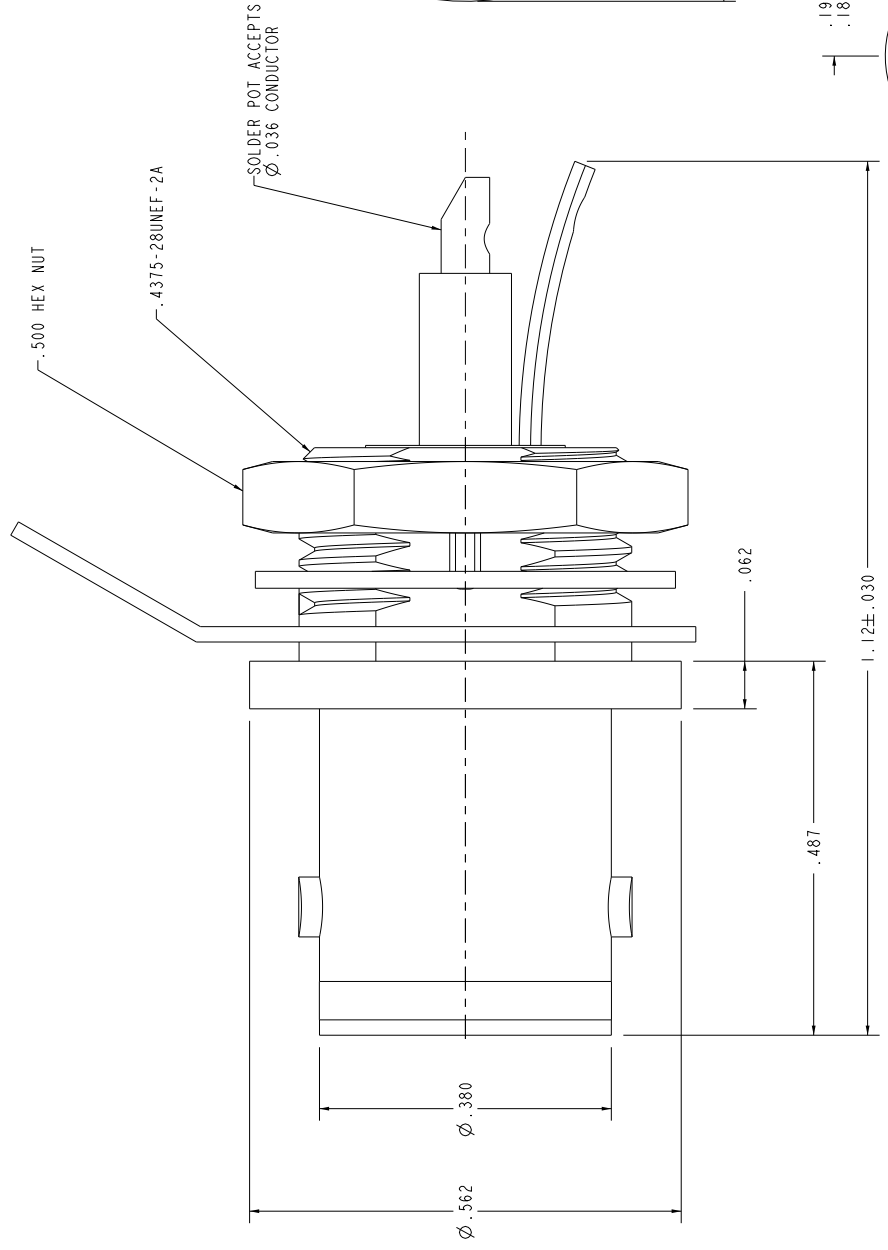


THE DATASHEET OF BJ77TL



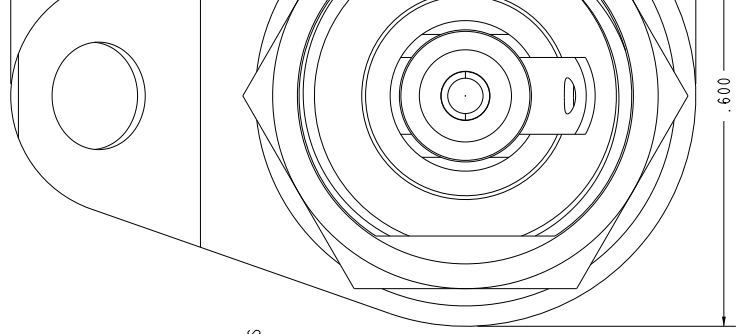
DATA CONTAINED IN THIS DOCUMENT IS PROPRIETARY TO THE PERSON CONCERNED. NO REPRODUCTION OR TRANSMISSION IN ANY FORM OR BY ANY MEANS, ELECTRONIC OR MECHANICAL, INCLUDING PHOTOCOPYING, RECORDING, OR BY ANY INFORMATION STORAGE AND RETRIEVAL SYSTEM, IS PERMITTED WITHOUT EXPRESS WRITTEN PERMISSION.

REV	DESCRIPTION
K	ECO 52831



- 3. MAX PANEL THK .125
- 2. SOCKET CONTACT CONCENTRIC TWINAX/ TRIAX 2-LUG TRB SOLDER POT BULKHEAD MOUNT RECEPTACLE
- 1. FINISH: TFS-1A (NICKEL)

NOTES: UNLESS OTHERWISE SPECIFIED.





DO NOT INTERPRET DRAWING FOR DIMENSIONS UNLESS OTHERWISE SPECIFIED.	
DRN	J. CRAWFORD 1/29/11
CHK	C. WALLACE 2/7/11
QUALITY	
MANUF	
APPROVED	
PROJECT FILE NO.	305-0508

N/A
SURFACE AREA

Looking for pricing, stock, or lifecycle information?

Click below to explore more details on WIN SOURCE:

-  [View BJ77TL on WIN SOURCE](#)
-  [Cinch Connectivity Solutions](#) Information

Optimize Your Supply Chain with WIN SOURCE Solutions

-  Global Sourcing Solution
-  Obsolete Management
-  Cost Control Management
-  Shortage Management
-  Alternative Solution
-  Excess Inventory Management