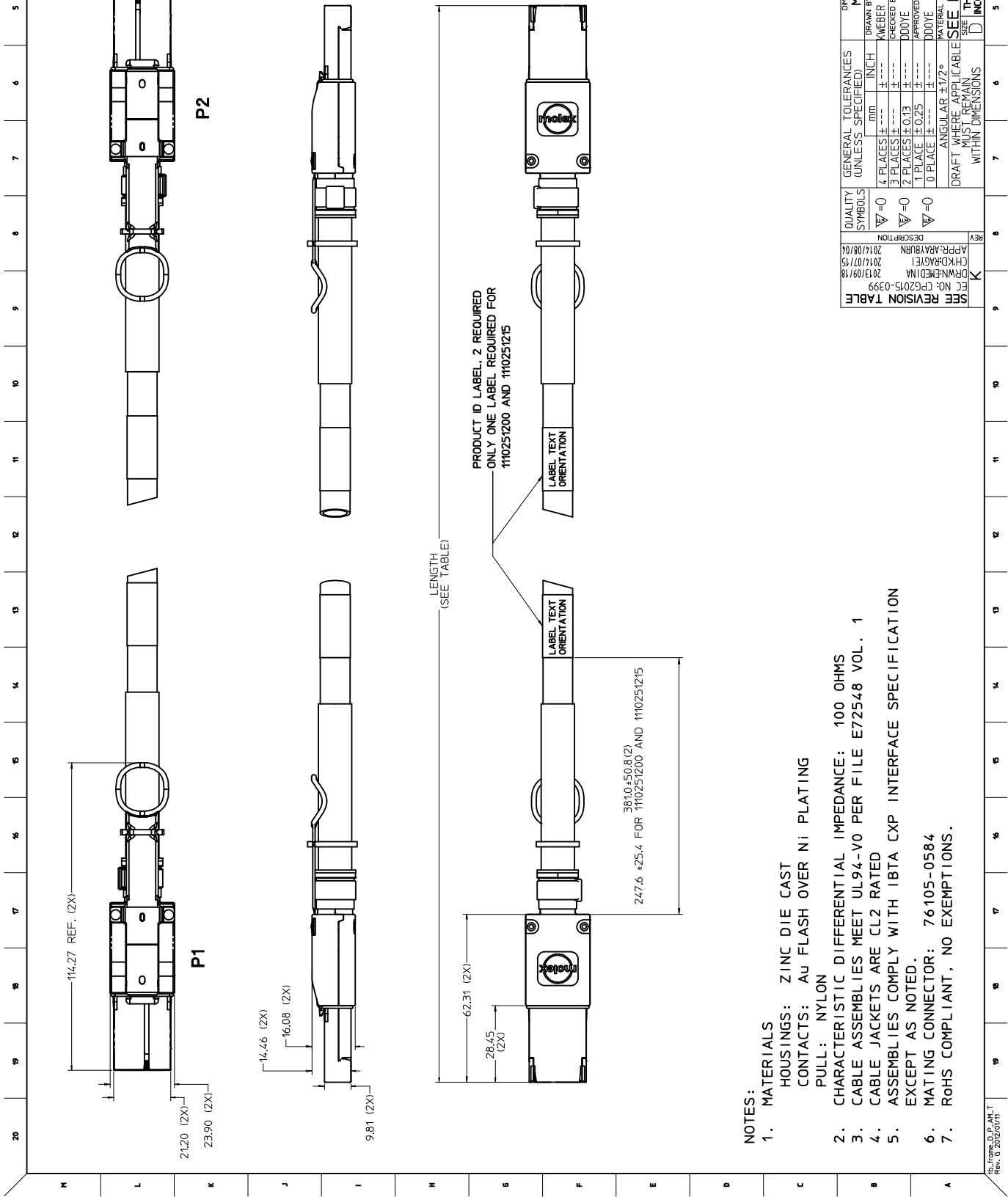




THE DATASHEET OF
1110251200





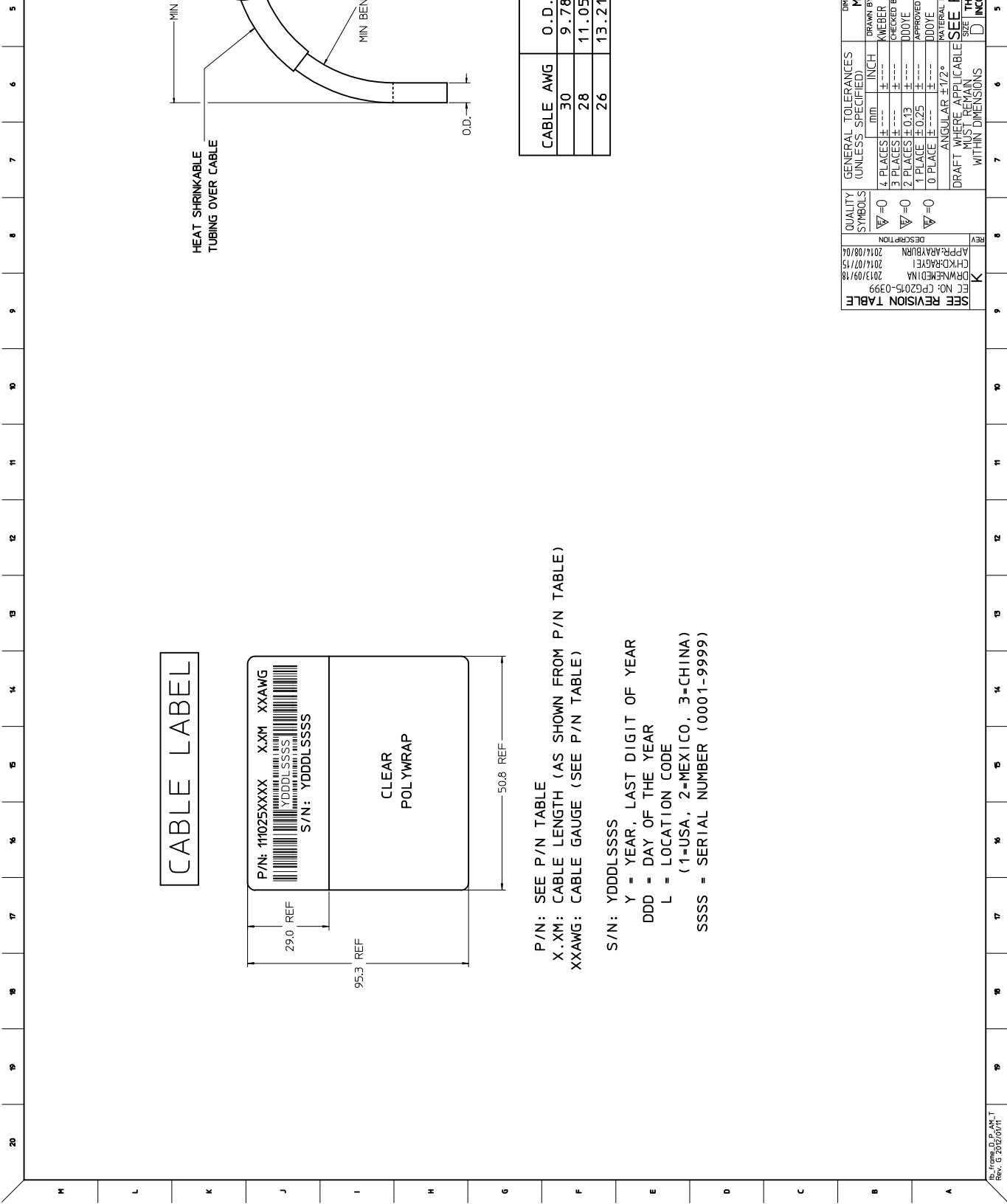
NOTES:

1. MATERIALS
HOUSINGS: ZINC DIE CAST
CONTACTS: AU FLASH OVER Ni PLATING
PULL: NYLON
2. CHARACTERISTIC DIFFERENTIAL IMPEDANCE: 100 OHMS
3. CABLE ASSEMBLIES MEET UL94-V0 PER FILE E72548 VOL. 1
4. CABLE JACKETS ARE CL2 RATED
5. ASSEMBLIES COMPLY WITH IBTA CXP INTERFACE SPECIFICATION EXCEPT AS NOTED.
6. MATING CONNECTOR: 76105-0584
7. RGHS COMPLIANT, NO EXEMPTIONS.

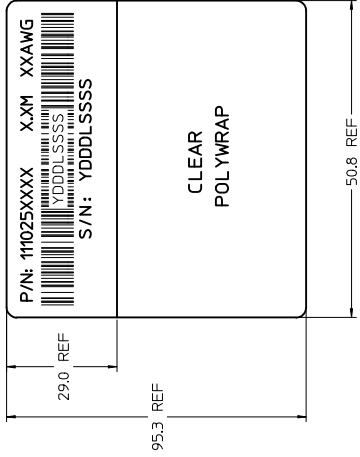
QUALITY SYMBOLS	GENERAL TOLERANCES UNLESS SPECIFIED:	DRAWN BY
▽	mm	MWEBER
▽	INCH	CHECKED
▽	±	DOONE
▽	±	APPROVED
▽	±	DOONE
▽	±	MATERIAL
▽	ANGULAR ±1/2°	SEE
▽	DRAFT WHERE APPLICABLE	IT
▽	MUS REMAIN WITHIN DIMENSIONS	INC

REV	DESCRIPTION
1	DRW:KEMD1A 2013/09/18
2	CHK:RAGE1 2014/07/15
3	APP:ARAYBURN 2014/08/04

REV	DESCRIPTION
1	REC NO: PG2015-0399
2	FREE REVISION TABLE



CABLE LABEL



P/N: SEE P/N TABLE
 X.XM: CABLE LENGTH (AS SHOWN FROM P/N TABLE)
 XXAWG: CABLE GAUGE (SEE P/N TABLE)

S/N: YDDDLSSSS
 Y = YEAR, LAST DIGIT OF YEAR
 DDD = DAY OF THE YEAR
 L = LOCATION CODE
 (1=USA, 2=MEXICO, 3=CHINA)
 SSSS = SERIAL NUMBER (0001-9999)

CABLE AWG	O. D.
30	9.78
28	11.05
26	13.21

QUALITY SYMBOLS	GENERAL TOLERANCES (UNLESS SPECIFIED)	DRAWN BY
△	2 PLACES ±.010 INCH	X.M.EBER
○	3 PLACES ±.010 INCH	CHECKED
△	1 PLACE ±0.13 APPROVED	DOOYE
○	0 PLACE ±.025 APPROVED	DOOYE
	ANGULAR ±1/2° MATERIAL	
	DRAFT WHERE APPLICABLE SEE	
	US DIMENSIONS	
	WITHIN DIMENSIONS	

As Shown To Order
 Rev. 16 2012/01/11

Looking for pricing, stock, or lifecycle information?

Click below to explore more details on WIN SOURCE:

 [View 1110251200 on WIN SOURCE](#)

 [Molex, LLC Information](#)

Optimize Your Supply Chain with WIN SOURCE Solutions

-  Global Sourcing Solution
-  Obsolete Management
-  Cost Control Management
-  Shortage Management
-  Alternative Solution
-  Excess Inventory Management