



**THE DATASHEET OF  
AD5247BKSZ10-2RL7**



## FEATURES

- 128 positions
- End-to-end resistance: 5 k $\Omega$ , 10 k $\Omega$ , 50 k $\Omega$ , 100 k $\Omega$
- Ultracompact, SC70-6 (2 mm  $\times$  2.1 mm) package
- I<sup>2</sup>C-compatible interface
- Full read/write of wiper register
- Power-on preset to midscale
- Single-supply 2.7 V to 5.5 V
- Rheostat mode temperature coefficient: 45 ppm/ $^{\circ}$ C
- Low power, I<sub>DD</sub> = 0.9  $\mu$ A at 3.3 V typical
- Wide operating temperature range: -40 $^{\circ}$ C to +125 $^{\circ}$ C

## APPLICATIONS

- Mechanical potentiometer replacement in new designs
- Transducer adjustment of pressure, temperature, position, chemical, and optical sensors
- RF amplifier-biasing
- LCD brightness and contrast adjustment
- Automotive electronics adjustment
- Gain control and offset adjustment

## GENERAL DESCRIPTION

The AD5247 provides a compact, 2 mm  $\times$  2.1 mm, packaged solution for 128-position adjustment applications. This device performs the same electronic adjustment function as a mechanical potentiometer or a variable resistor. Available in four different end-to-end resistance values (5 k $\Omega$ , 10 k $\Omega$ , 50 k $\Omega$ , and 100 k $\Omega$ ), these low temperature coefficient devices are ideal for high accuracy and stability variable resistance adjustments.

The wiper settings are controllable through the I<sup>2</sup>C-compatible digital interface, which can also be used to read back the present wiper register control word. The 10 k $\Omega$  and 100 k $\Omega$  options each

## FUNCTIONAL BLOCK DIAGRAM

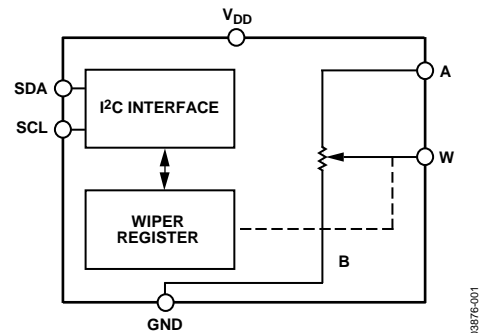


Figure 1.

03876-01

have three hard-coded slave address options available to allow users access to three of these devices on one I<sup>2</sup>C bus (see Table 8 for a full list of slave address locations).

The resistance between the wiper and either end point of the fixed resistor varies linearly with respect to the digital code transferred into the RDAC latch. Note the terms digital potentiometer, VR (variable resistor), and RDAC are used interchangeably in this document.

Operating from a 2.7 V to 5.5 V power supply and consuming 0.9  $\mu$ A (3.3 V) allows the AD5247 to be used in portable battery-operated applications.

### Rev. F

Information furnished by Analog Devices is believed to be accurate and reliable. However, no responsibility is assumed by Analog Devices for its use, nor for any infringements of patents or other rights of third parties that may result from its use. Specifications subject to change without notice. No license is granted by implication or otherwise under any patent or patent rights of Analog Devices. Trademarks and registered trademarks are the property of their respective owners.

## TABLE OF CONTENTS

|  |    |  |    |
|--|----|--|----|
| Features .....   | 1  | I <sup>2</sup> C Interface .....                   | 13 |
| Applications.....  | 1  | Theory of Operation .....                          | 14 |
| Functional Block Diagram .....   | 1  | Programming the Variable Resistor.....             | 14 |
| General Description .....  | 1  | Programming the Potentiometer Divider.....         | 15 |
| Revision History .....   | 2  | I <sup>2</sup> C-Compatible 2-Wire Serial Bus..... | 15 |
| Specifications.....  | 3  | Level Shifting for Bidirectional Interface.....    | 16 |
| Electrical Characteristics—5 k $\Omega$ Version.....                                     | 3  | ESD Protection .....                               | 16 |
| Electrical Characteristics—10 k $\Omega$ , 50 k $\Omega$ , and 100 k $\Omega$            |    | Terminal Voltage Operating Range .....             | 16 |
| Versions.....  | 4  | Maximum Operating Current .....                    | 16 |
| Timing Characteristics—5 k $\Omega$ , 10 k $\Omega$ , 50 k $\Omega$ , and 100 k $\Omega$ |    | Power-Up Sequence .....                            | 16 |
| Versions.....  | 5  | Layout and Power Supply Bypassing .....            | 17 |
| Absolute Maximum Ratings.....  | 6  | Constant Bias to Retain Resistance Setting.....    | 17 |
| ESD Caution.....   | 6  | Outline Dimensions .....                           | 18 |
| Pin Configuration and Function Descriptions.....   | 7  | Ordering Guide .....                               | 18 |
| Typical Performance Characteristics .....  | 8  |  |    |
| Test Circuits.....   | 12 |  |    |

## REVISION HISTORY

### 5/12—Rev. E to Rev. F

|   |    |
|---|----|
| Changes to Features and General Description Sections..... | 1  |
| Changes to I <sub>DD</sub> Parameters, Table 1 .....      | 3  |
| Changes to I <sub>DD</sub> Parameters, Table 2.....       | 4  |
| Changes to Figure 15.....                                 | 9  |
| Changes to Figure 16.....                                 | 10 |
| Removed Evaluation Board Section.....                     | 17 |
| Changes to Ordering Guide .....                           | 18 |

### 1/11—Rev. D to Rev. E

|   |   |
|---|---|
| Change to Table 1, Added Output Logic Low ..... | 3 |
| Change to Table 2, Added Output Logic Low ..... | 4 |

### 3/10—Rev. C to Rev. D

|                                      |    |
|--------------------------------------|----|
| Changes to Table 9 and Table 10..... | 14 |
|--------------------------------------|----|

### 10/09—Rev. B to Rev. C

|  |    |
|--|----|
| Changes to Zero-Scale Error (10 k $\Omega$ ) Parameter, Table 2..... | 4  |
| Changes to Ordering Guide .....                                      | 18 |

### 3/07—Rev. A to Rev. B

|  |    |
|--|----|
| Changes to General Description Section .....                           | 1  |
| Added Table 8 .....  | 13 |
| Changes to I <sup>2</sup> C-Compatible 2-Wire Serial Bus Section ..... | 15 |
| Changes to Ordering Guide .....  | 18 |

### 7/06—Rev. 0 to Rev. A

|   |           |
|---|-----------|
| Updated Format.....                               | Universal |
| Changes to Absolute Maximum Ratings section ..... | 6         |
| Changes to Ordering Guide .....                   | 18        |

### 9/03—Revision 0: Initial Version

## SPECIFICATIONS

### ELECTRICAL CHARACTERISTICS—5 kΩ VERSION

$V_{DD} = 5\text{ V} \pm 10\%$  or  $3\text{ V} \pm 10\%$ ,  $V_A = V_{DD}$ ,  $-40^\circ\text{C} < T_A < +125^\circ\text{C}$ , unless otherwise noted.

Table 1.

| Parameter                                       | Symbol                   | Conditions   | Min  | Typ <sup>1</sup> | Max        | Unit   |
|---|--------------------------|--|------|------------------|------------|--------|
| DC CHARACTERISTICS—RHEOSTAT MODE                |                          |  |      |                  |            |        |
| Resistor Differential Nonlinearity <sup>2</sup> | R-DNL                    | $R_{WB}$ , $V_A = \text{no connect}$                                   | -1.5 | $\pm 0.1$        | +1.5       | LSB    |
| Resistor Integral Nonlinearity <sup>2</sup>     | R-INL                    | $R_{WB}$ , $V_A = \text{no connect}$                                   | -4   | $\pm 0.75$       | +4         | LSB    |
| Nominal Resistor Tolerance <sup>3</sup>         | $\Delta R_{AB}$          |  | -30  |                  | +30        | %      |
| Resistance Temperature Coefficient <sup>3</sup> | $\Delta R_{AB}/\Delta T$ |  |      | 45               |            | ppm/°C |
| Output Resistance                               | $R_{WB}$                 | Code = 0x00  |      | 75               | 300        | Ω      |
| DC CHARACTERISTICS—POTENTIOMETER DIVIDER MODE   |                          |  |      |                  |            |        |
| Differential Nonlinearity <sup>4</sup>          | DNL                      |  | -1   | $\pm 0.1$        | +1         | LSB    |
| Integral Nonlinearity <sup>4</sup>              | INL                      |  | -1   | $\pm 0.2$        | +1         | LSB    |
| Voltage Divider Temperature Coefficient         | $\Delta V_W/\Delta T$    | Code = 0x40  |      | 15               |            | ppm/°C |
| Full-Scale Error                                | $V_{WFSE}$               | Code = 0x7F  | -3   | -2               | 0          | LSB    |
| Zero-Scale Error                                | $V_{WZSE}$               | Code = 0x00  | 0    | 1                | 2          | LSB    |
| RESISTOR TERMINALS                              |                          |  |      |                  |            |        |
| Voltage Range <sup>5</sup>                      | $V_A, V_W$               |  | GND  |                  | $V_{DD}$   | V      |
| Capacitance A <sup>6</sup>                      | $C_A$                    | $f = 1\text{ MHz}$ , measured to GND,<br>code = 0x40                   |      | 45               |            | pF     |
| Capacitance W <sup>6</sup>                      | $C_W$                    | $f = 1\text{ MHz}$ , measured to GND,<br>code = 0x40                   |      | 60               |            | pF     |
| Common-Mode Leakage                             | $I_{CM}$                 | $V_A = V_{DD}/2$   |      | 1                |            | nA     |
| DIGITAL INPUTS AND OUTPUTS                      |                          |  |      |                  |            |        |
| Input Logic High                                | $V_{IH}$                 | $V_{DD} = 5\text{ V}$  | 2.4  |                  |            | V      |
| Input Logic Low                                 | $V_{IL}$                 | $V_{DD} = 5\text{ V}$  |      |                  | 0.8        | V      |
| Input Logic High                                | $V_{IH}$                 | $V_{DD} = 3\text{ V}$  | 2.1  |                  |            | V      |
| Input Logic Low                                 | $V_{IL}$                 | $V_{DD} = 3\text{ V}$  |      |                  | 0.6        | V      |
| Input Current                                   | $I_{IL}$                 | $V_{IN} = 0\text{ V}$ or $5\text{ V}$                                  |      |                  | $\pm 1$    | μA     |
| Input Capacitance <sup>6</sup>                  | $C_{IL}$                 |  |      | 5                |            | pF     |
| Output Logic Low (SDA)                          | $V_{OL}$                 | $I_{OL} = 3\text{ mA}$<br>$I_{OL} = 6\text{ mA}$                       |      |                  | 0.4<br>0.6 | V<br>V |
| POWER SUPPLIES                                  |                          |  |      |                  |            |        |
| Power Supply Range                              | $V_{DD\text{ RANGE}}$    |  | 2.7  |                  | 5.5        | V      |
| Supply Current                                  | $I_{DD}$                 | $V_{DD} = 5.5\text{ V}$ ; $V_{IH} = V_{DD}$ or $V_{IL} = \text{GND}$   |      | 3                | 7          | μA     |
|   |                          | $V_{DD} = 5\text{ V}$ ; $V_{IH} = V_{DD}$ or $V_{IL} = \text{GND}$     |      | 2.5              | 5.2        | μA     |
|   |                          | $V_{DD} = 3.3\text{ V}$ ; $V_{IH} = V_{DD}$ or $V_{IL} = \text{GND}$   |      | 0.9              | 2          | μA     |
| Power Dissipation <sup>7</sup>                  | $P_{DISS}$               | $V_{IH} = 5\text{ V}$ or $V_{IL} = 0\text{ V}$ , $V_{DD} = 5\text{ V}$ |      |                  | 40         | μW     |
| Power Supply Sensitivity                        | PSSR                     | $V_{DD} = 5\text{ V} \pm 10\%$ ,<br>code = midscale                    |      | $\pm 0.003$      | $\pm 0.05$ | %/%    |
| DYNAMIC CHARACTERISTICS <sup>6,8</sup>          |                          |  |      |                  |            |        |
| Bandwidth -3 dB                                 | BW_5 K                   | $R_{AB} = 5\text{ k}\Omega$ , code = 0x40                              |      | 1.2              |            | MHz    |
| Total Harmonic Distortion                       | THD <sub>W</sub>         | $V_A = 1\text{ V rms}$ , $V_B = 0\text{ V}$ , $f = 1\text{ kHz}$       |      | 0.05             |            | %      |
| $V_W$ Settling Time                             | $t_s$                    | $V_A = 5\text{ V}$ , $\pm 1\text{ LSB error band}$                     |      | 1                |            | μs     |
| Resistor Noise Voltage Density                  | e <sub>N_WB</sub>        | $R_{WB} = 2.5\text{ k}\Omega$ , $R_S = 0\text{ }\Omega$                |      | 6                |            | nV/√Hz |

<sup>1</sup> Typical specifications represent average readings at 25°C and  $V_{DD} = 5\text{ V}$ .

<sup>2</sup> Resistor position nonlinearity error R-INL is the deviation from an ideal value measured between the maximum resistance and the minimum resistance wiper positions. R-DNL measures the relative step change from ideal between successive tap positions. Parts are guaranteed monotonic.

<sup>3</sup>  $V_A = V_{DD}$ , wiper ( $V_W$ ) = no connect.

<sup>4</sup> INL and DNL are measured at  $V_W$ , with the RDAC configured as a potentiometer divider similar to a voltage output DAC.  $V_A = V_{DD}$  and  $V_B = 0\text{ V}$ . DNL specification limits of  $\pm 1\text{ LSB}$  maximum are guaranteed monotonic under operating conditions.

<sup>5</sup> Resistor Terminal A and Resistor Terminal W have no limitations on polarity with respect to each other.

<sup>6</sup> Guaranteed by design and not subject to production test.

<sup>7</sup>  $P_{DISS}$  is calculated from  $(I_{DD} \times V_{DD})$ . CMOS logic level inputs result in minimum power dissipation.

<sup>8</sup> All dynamic characteristics use  $V_{DD} = 5\text{ V}$ .

**ELECTRICAL CHARACTERISTICS—10 kΩ, 50 kΩ, AND 100 kΩ VERSIONS**

$V_{DD} = 5\text{ V} \pm 10\%$  or  $3\text{ V} \pm 10\%$ ,  $V_A = V_{DD}$ ,  $-40^\circ\text{C} < T_A < +125^\circ\text{C}$ , unless otherwise noted.

Table 2.

| Parameter  | Symbol                   | Conditions  | Min | Typ <sup>1</sup> | Max      | Unit   |
|--|--------------------------|---|-----|------------------|----------|--------|
| <b>DC CHARACTERISTICS—RHEOSTAT MODE</b>              |                          |   |     |                  |          |        |
| Resistor Differential Nonlinearity <sup>2</sup>      | R-DNL                    | $R_{WB}, V_A = \text{no connect}$                                 | -1  | ±0.1             | +1       | LSB    |
| Resistor Integral Nonlinearity <sup>2</sup>          | R-INL                    | $R_{WB}, V_A = \text{no connect}$                                 | -2  | ±0.25            | +2       | LSB    |
| Nominal Resistor Tolerance <sup>3</sup>              | $\Delta R_{AB}$          |   | -20 |                  | +20      | %      |
| Resistance Temperature Coefficient <sup>3</sup>      | $\Delta R_{AB}/\Delta T$ |   |     | 45               |          | ppm/°C |
| Output Resistance                                    | $R_{WB}$                 | Code = 0x00   |     | 75               | 300      | Ω      |
| <b>DC CHARACTERISTICS—POTENTIOMETER DIVIDER MODE</b> |                          |   |     |                  |          |        |
| Differential Nonlinearity <sup>4</sup>               | DNL                      |   | -1  | ±0.1             | +1       | LSB    |
| Integral Nonlinearity <sup>4</sup>                   | INL                      |   | -1  | ±0.2             | +1       | LSB    |
| Voltage Divider Temperature Coefficient              | $\Delta V_W/\Delta T$    | Code = 0x40   |     | 15               |          | ppm/°C |
| Full-Scale Error (50 kΩ, 100 kΩ)                     | $V_{WFSE}$               | Code = 0x7F   | -1  | -1               | 0        | LSB    |
| Zero-Scale Error (50 kΩ, 100 kΩ)                     | $V_{WZSE}$               | Code = 0x00   | 0   | 0.4              | 1        | LSB    |
| Full-Scale Error (10 kΩ)                             | $V_{WFSE}$               | Code = 0x7F   | -2  | -0.5             | 0        | LSB    |
| Zero-Scale Error (10 kΩ)                             | $V_{WZSE}$               | $V_{DD} = 4.5\text{ V to }5.5\text{ V}$ , code = 0x00             | 0   | 0.5              | 1        | LSB    |
|  |                          | $V_{DD} = 2.7\text{ V to }4.4\text{ V}$ , code = 0x00             | 0   | 0.5              | 1.2      | LSB    |
| <b>RESISTOR TERMINALS</b>                            |                          |   |     |                  |          |        |
| Voltage Range <sup>5</sup>                           | $V_A, V_W$               |   | GND |                  | $V_{DD}$ | V      |
| Capacitance A <sup>6</sup>                           | $C_A$                    | f = 1 MHz, measured to GND, code = 0x40                           |     | 45               |          | pF     |
| Capacitance W <sup>6</sup>                           | $C_W$                    | f = 1 MHz, measured to GND, code = 0x40                           |     | 60               |          | pF     |
| Common-Mode Leakage                                  | $I_{CM}$                 | $V_A = V_{DD}/2$  |     | 1                |          | nA     |
| <b>DIGITAL INPUTS AND OUTPUTS</b>                    |                          |   |     |                  |          |        |
| Input Logic High                                     | $V_{IH}$                 | $V_{DD} = 5\text{ V}$   | 2.4 |                  |          | V      |
| Input Logic Low                                      | $V_{IL}$                 | $V_{DD} = 5\text{ V}$   |     |                  | 0.8      | V      |
| Input Logic High                                     | $V_{IH}$                 | $V_{DD} = 3\text{ V}$   | 2.1 |                  |          | V      |
| Input Logic Low                                      | $V_{IL}$                 | $V_{DD} = 3\text{ V}$   |     |                  | 0.6      | V      |
| Input Current  | $I_{IL}$                 | $V_{IN} = 0\text{ V or }5\text{ V}$                               |     |                  | ±1       | μA     |
| Input Capacitance <sup>6</sup>                       | $C_{IL}$                 |   |     | 5                |          | pF     |
| Output Logic Low (SDA)                               | $V_{OL}$                 | $I_{OL} = 3\text{ mA}$  |     |                  | 0.4      | V      |
|  |                          | $I_{OL} = 6\text{ mA}$  |     |                  | 0.6      | V      |
| <b>POWER SUPPLIES</b>                                |                          |   |     |                  |          |        |
| Power Supply Range                                   | $V_{DD\text{ RANGE}}$    |   | 2.7 |                  | 5.5      | V      |
| Supply Current                                       | $I_{DD}$                 | $V_{DD} = 5.5\text{ V}; V_{IH} = V_{DD}$ or $V_{IL} = \text{GND}$ |     | 3                | 7        | μA     |
|  |                          | $V_{DD} = 5\text{ V}; V_{IH} = V_{DD}$ or $V_{IL} = \text{GND}$   |     | 2.5              | 5.2      | μA     |
|  |                          | $V_{DD} = 3.3\text{ V}; V_{IH} = V_{DD}$ or $V_{IL} = \text{GND}$ |     | 0.9              | 2        | μA     |
| Power Dissipation <sup>7</sup>                       | $P_{DISS}$               | $V_{IH} = 5\text{ V or }V_{IL} = 0\text{ V}, V_{DD} = 5\text{ V}$ |     |                  | 40       | μW     |
| Power Supply Sensitivity                             | PSSR                     | $V_{DD} = 5\text{ V} \pm 10\%$ , code = midscale                  |     | ±0.01            | ±0.02    | %/%    |

| Parameter   | Symbol            | Conditions   | Min | Typ <sup>1</sup> | Max | Unit   |
|---|-------------------|--|-----|------------------|-----|--------|
| DYNAMIC CHARACTERISTICS <sup>6, 8</sup>           |                   |  |     |                  |     |        |
| Bandwidth -3 dB                                   | BW                | $R_{AB} = 10\text{ k}\Omega/50\text{ k}\Omega/100\text{ k}\Omega$ ,<br>code = 0x40 |     | 600/100/40       |     | kHz    |
| Total Harmonic Distortion                         | THD <sub>W</sub>  | $V_A = 1\text{ V rms}$ , $f = 1\text{ kHz}$ , $R_{AB} = 10\text{ k}\Omega$         |     | 0.05             |     | %      |
| V <sub>W</sub> Settling Time (10 kΩ/50 kΩ/100 kΩ) | t <sub>s</sub>    | $V_A = 5\text{ V} \pm 1\text{ LSB error band}$                                     |     | 2                |     | μs     |
| Resistor Noise Voltage Density                    | e <sub>N,WB</sub> | $R_{WB} = 5\text{ k}\Omega$ , $R_s = 0$  |     | 9                |     | nV/√Hz |

<sup>1</sup> Typical specifications represent average readings at 25°C and V<sub>DD</sub> = 5 V.

<sup>2</sup> Resistor position nonlinearity error R-INL is the deviation from an ideal value measured between the maximum resistance and the minimum resistance wiper positions. R-DNL measures the relative step change from ideal between successive tap positions. Parts are guaranteed monotonic.

<sup>3</sup> V<sub>A</sub> = V<sub>DD</sub>, wiper (V<sub>W</sub>) = no connect.

<sup>4</sup> INL and DNL are measured at V<sub>W</sub>, with the RDAC configured as a potentiometer divider similar to a voltage output DAC. V<sub>A</sub> = V<sub>DD</sub> and V<sub>B</sub> = 0 V.

DNL specification limits of ±1 LSB maximum are guaranteed monotonic operating conditions.

<sup>5</sup> Resistor Terminal A and Resistor Terminal W have no limitations on polarity with respect to each other.

<sup>6</sup> Guaranteed by design, not subject to production test.

<sup>7</sup> P<sub>DISS</sub> is calculated from (I<sub>DD</sub> × V<sub>DD</sub>). CMOS logic level inputs result in minimum power dissipation.

<sup>8</sup> All dynamic characteristics use V<sub>DD</sub> = 5 V.

### TIMING CHARACTERISTICS—5 kΩ, 10 kΩ, 50 kΩ, AND 100 kΩ VERSIONS

V<sub>DD</sub> = 5 V ± 10% or 3 V ± 10%, V<sub>A</sub> = V<sub>DD</sub>, -40°C < T<sub>A</sub> < +125°C, unless otherwise noted.

Table 3.

| Parameter <sup>1, 2, 3</sup>                                 | Symbol           | Min | Typ <sup>4</sup> | Max | Unit |
|--|------------------|-----|------------------|-----|------|
| SCL Clock Frequency  | f <sub>SCL</sub> |     |                  | 400 | kHz  |
| Bus Free Time Between Stop and Start, t <sub>BUF</sub>       | t <sub>1</sub>   | 1.3 |                  |     | μs   |
| Hold Time (Repeated Start), t <sub>HD,STA</sub> <sup>5</sup> | t <sub>2</sub>   | 0.6 |                  |     | μs   |
| Low Period of SCL Clock, t <sub>LOW</sub>                    | t <sub>3</sub>   | 1.3 |                  |     | μs   |
| High Period of SCL Clock, t <sub>HIGH</sub>                  | t <sub>4</sub>   | 0.6 |                  | 50  | μs   |
| Setup Time for Repeated Start Condition, t <sub>SU,STA</sub> | t <sub>5</sub>   | 0.6 |                  |     | μs   |
| Data Hold Time, t <sub>HD,DAT</sub>                          | t <sub>6</sub>   |     |                  | 0.9 | μs   |
| Data Setup Time, t <sub>SU,DAT</sub>                         | t <sub>7</sub>   | 100 |                  |     | ns   |
| Fall Time of Both SDA and SCL Signals, t <sub>F</sub>        | t <sub>8</sub>   |     |                  | 300 | ns   |
| Rise Time of Both SDA and SCL Signals, t <sub>R</sub>        | t <sub>9</sub>   |     |                  | 300 | ns   |
| Setup Time for Stop Condition, t <sub>SU,STO</sub>           | t <sub>10</sub>  | 0.6 |                  |     | μs   |

<sup>1</sup> Specifications apply to all parts.

<sup>2</sup> Guaranteed by design, not subject to production test.

<sup>3</sup> See timing diagrams (Figure 2, Figure 33, and Figure 34) for locations of measured values.

<sup>4</sup> Typical specifications represent average readings at 25°C and V<sub>DD</sub> = 5 V.

<sup>5</sup> After this period, the first clock pulse is generated.

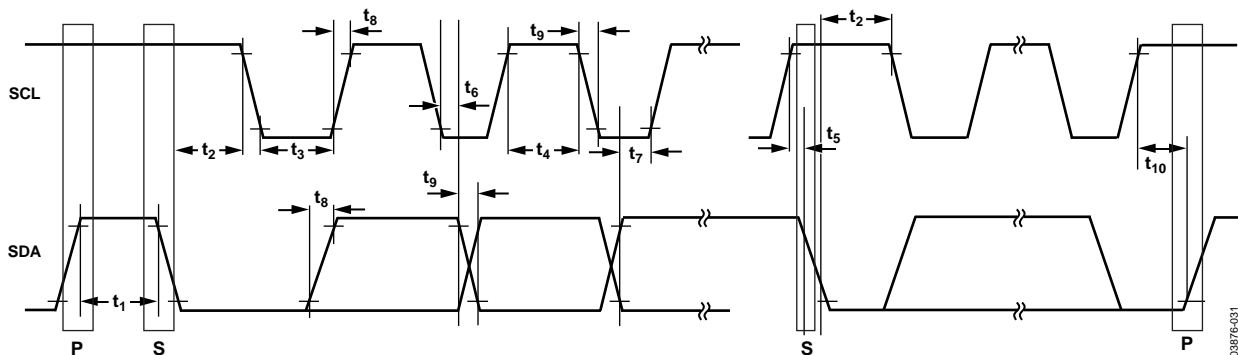


Figure 2. I<sup>2</sup>C Interface, Detailed Timing Diagram

## ABSOLUTE MAXIMUM RATINGS

$T_A = 25^\circ\text{C}$ , unless otherwise noted.

Table 4.

| Parameter  | Rating                                      |
|--|---|
| $V_{DD}$ to GND  | -0.3 V to +7 V                              |
| $V_A, V_W$ to GND  | $V_{DD}$                                    |
| Terminal Current, Ax to Bx, Ax to Wx, Bx to Wx           |   |
| Pulsed <sup>1</sup>                                      | $\pm 20$ mA                                 |
| Continuous   | $\pm 5$ mA                                  |
| Digital Inputs and Output Voltage to GND                 | 0 V to $V_{DD} + 0.3$ V                     |
| Operating Temperature Range                              | $-40^\circ\text{C}$ to $+125^\circ\text{C}$ |
| Maximum Junction Temperature ( $T_{JMAX}$ )              | $150^\circ\text{C}$                         |
| Storage Temperature Range                                | $-65^\circ\text{C}$ to $+150^\circ\text{C}$ |
| Thermal Resistance $\theta_{JA}$ <sup>2</sup> : (SC70-6) | $340^\circ\text{C}/\text{W}$                |
| Reflow Soldering Peak Temperature                        |   |
| SnPb   | $240^\circ\text{C}$                         |
| Pb-Free  | $260^\circ\text{C}$                         |

<sup>1</sup> Maximum terminal current is bounded by the maximum current handling of the switches, maximum power dissipation of the package, and maximum applied voltage across any two of the A, B, and W terminals at a given resistance.

<sup>2</sup> Package power dissipation =  $(T_{JMAX} - T_A)/\theta_{JA}$ .

Stresses above those listed under Absolute Maximum Ratings may cause permanent damage to the device. This is a stress rating only; functional operation of the device at these or any other conditions above those indicated in the operational section of this specification is not implied. Exposure to absolute maximum rating conditions for extended periods may affect device reliability.

### ESD CAUTION



**ESD (electrostatic discharge) sensitive device.** Charged devices and circuit boards can discharge without detection. Although this product features patented or proprietary protection circuitry, damage may occur on devices subjected to high energy ESD. Therefore, proper ESD precautions should be taken to avoid performance degradation or loss of functionality.

## PIN CONFIGURATION AND FUNCTION DESCRIPTIONS

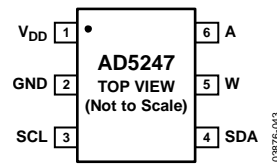


Figure 3. Pin Configuration

Table 5. Pin Function Descriptions

| Pin No. | Mnemonic        | Description                                  |
|---------|-----------------|--|
| 1       | V <sub>DD</sub> | Positive Power Supply.                       |
| 2       | GND             | Digital Ground and B Termination Voltage.    |
| 3       | SCL             | Serial Clock Input; Positive Edge Triggered. |
| 4       | SDA             | Serial Data Input/Output.                    |
| 5       | W               | Terminal W.                                  |
| 6       | A               | Terminal A.                                  |

TYPICAL PERFORMANCE CHARACTERISTICS

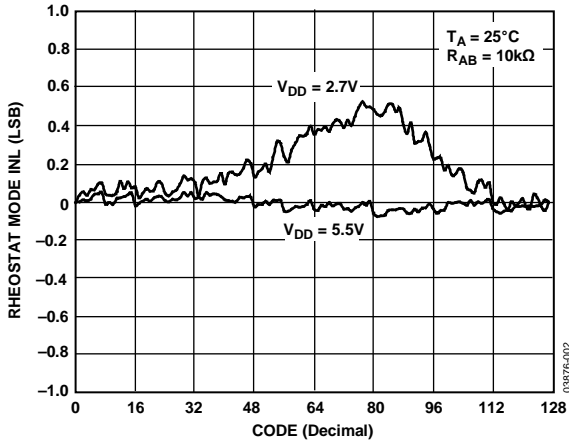


Figure 4. R-INL vs. Code vs. Supply Voltages

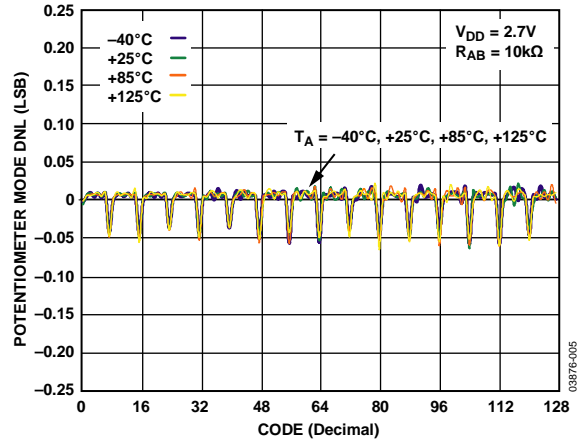


Figure 7. DNL vs. Code vs. Temperature

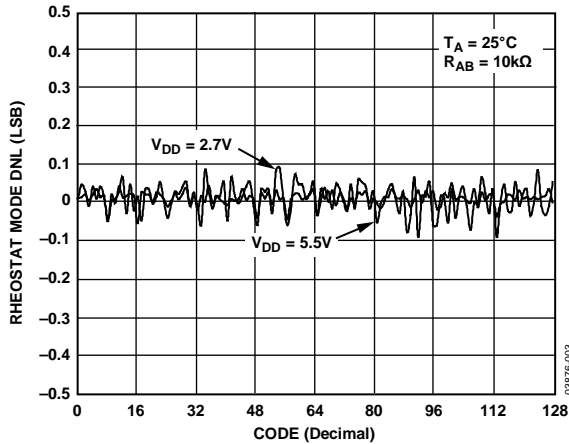


Figure 5. R-DNL vs. Code vs. Supply Voltages

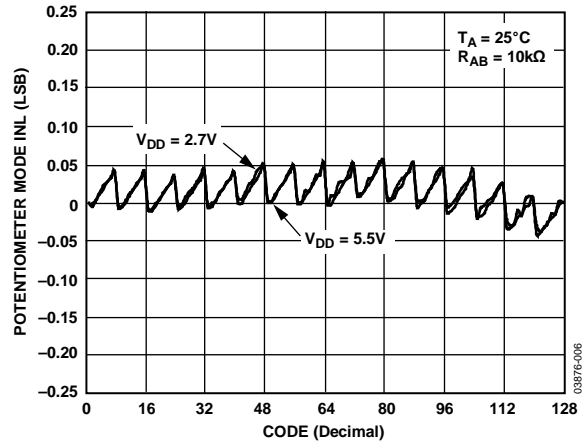


Figure 8. INL vs. Code vs. Supply Voltages

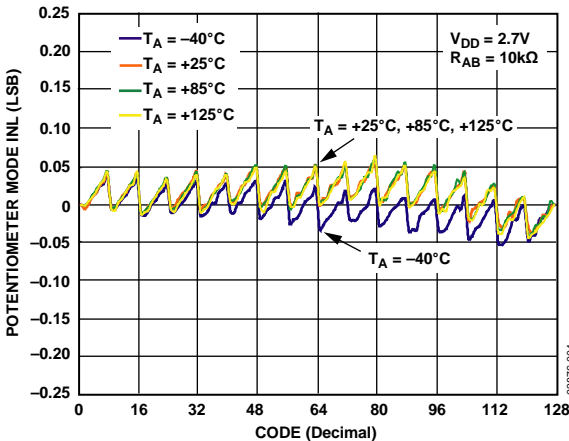


Figure 6. INL vs. Code vs. Temperature

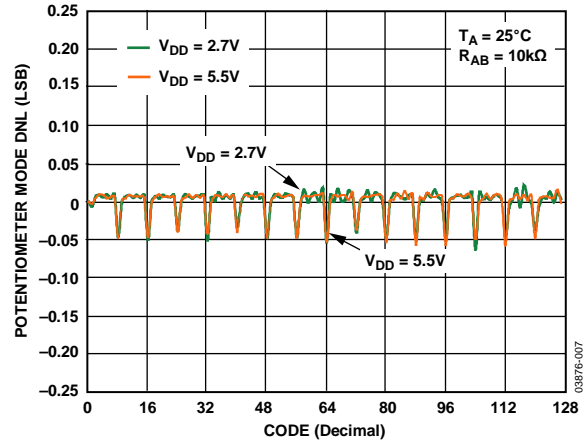


Figure 9. DNL vs. Code vs. Supply Voltages

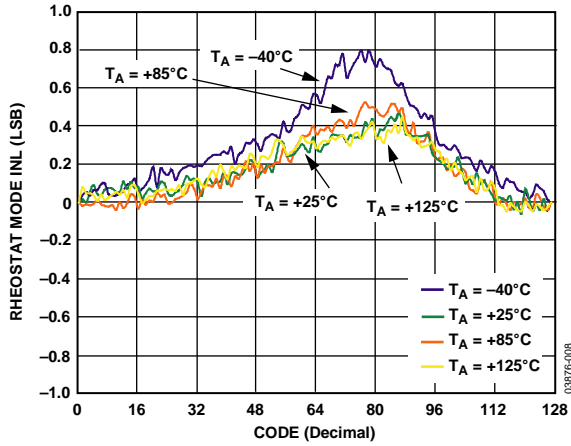


Figure 10. R-INL vs. Code vs. Temperature

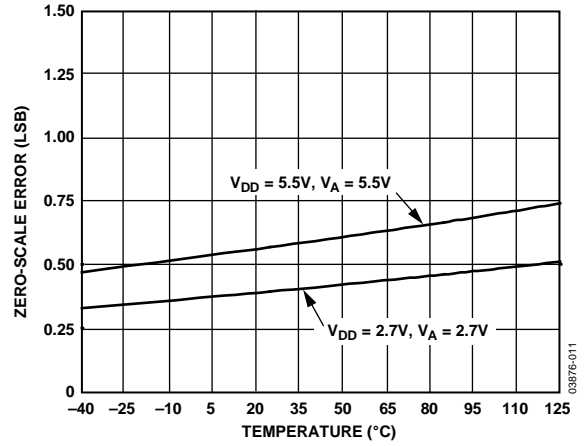


Figure 13. Zero-Scale Error vs. Temperature

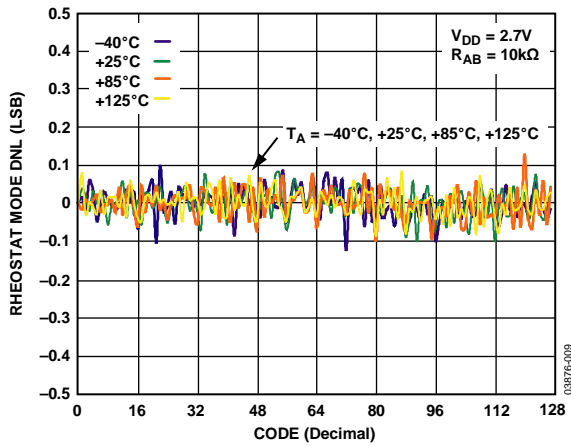


Figure 11. R-DNL vs. Code vs. Temperature

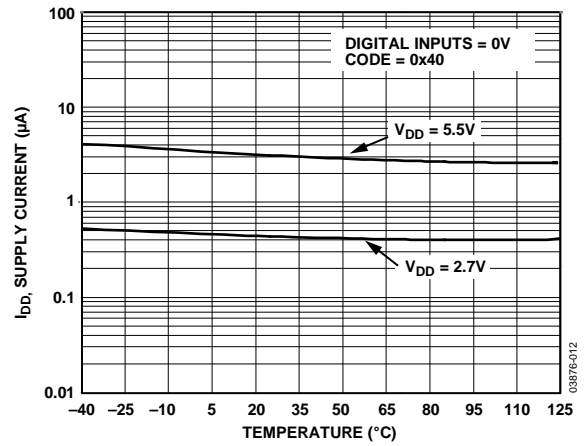


Figure 14. Supply Current vs. Temperature

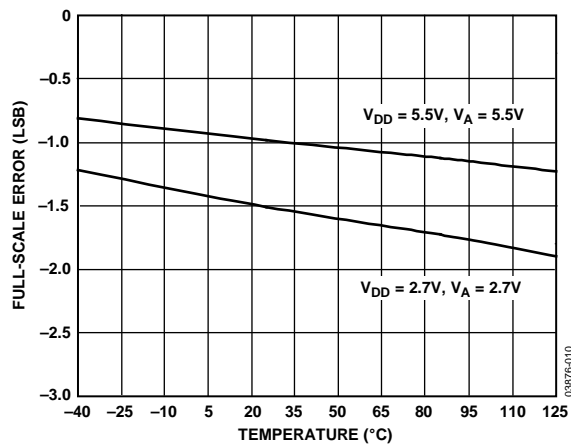


Figure 12. Full-Scale Error vs. Temperature

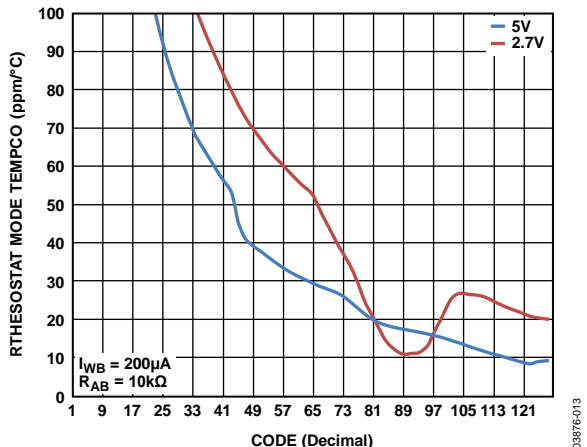


Figure 15.  $\Delta R_{WB}/\Delta T$  vs. Code

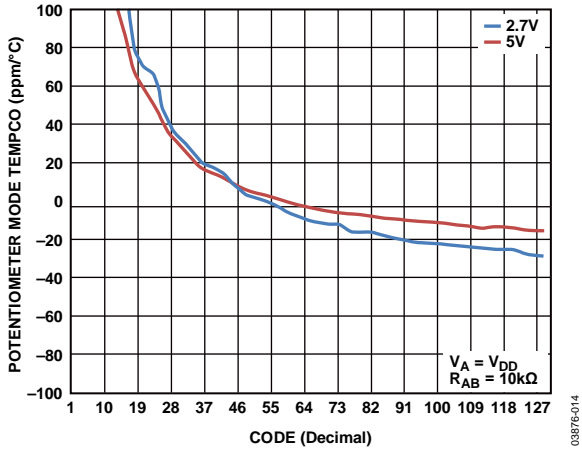


Figure 16.  $\Delta V_{WB}/\Delta T$  vs. Code

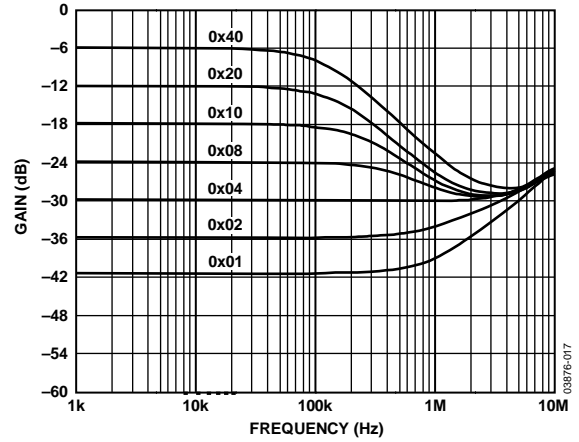


Figure 19. Gain vs. Frequency vs. Code,  $R_{AB} = 50\text{ k}\Omega$

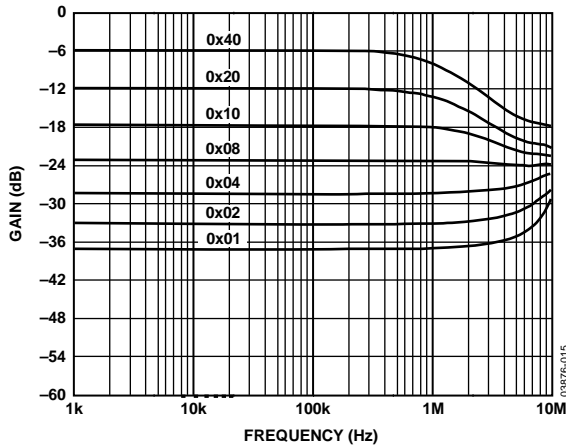


Figure 17. Gain vs. Frequency vs. Code,  $R_{AB} = 5\text{ k}\Omega$

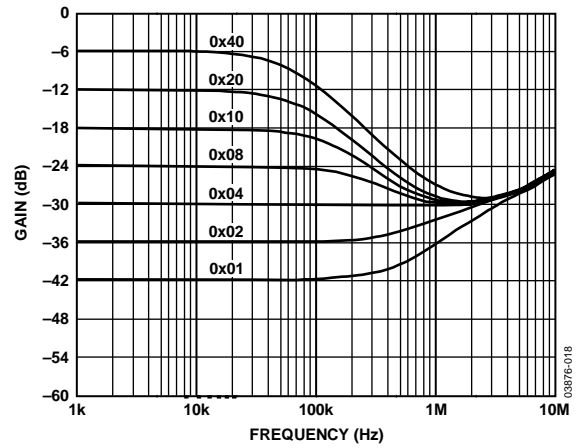


Figure 20. Gain vs. Frequency vs. Code,  $R_{AB} = 100\text{ k}\Omega$

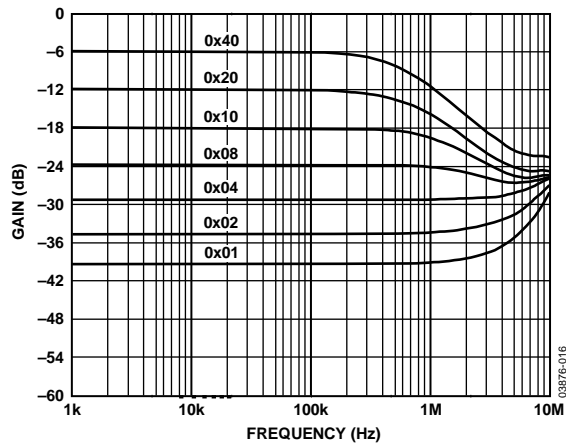


Figure 18. Gain vs. Frequency vs. Code,  $R_{AB} = 10\text{ k}\Omega$

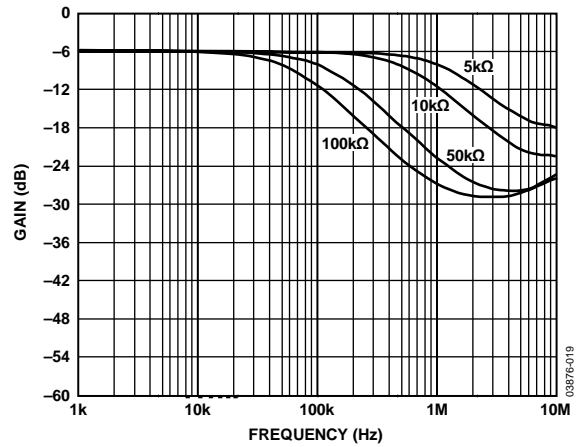


Figure 21. -3 dB Bandwidth @ Code = 0x80

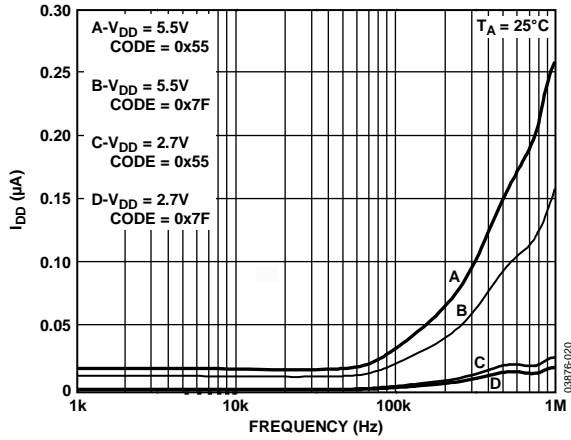


Figure 22.  $I_{DD}$  vs. Frequency

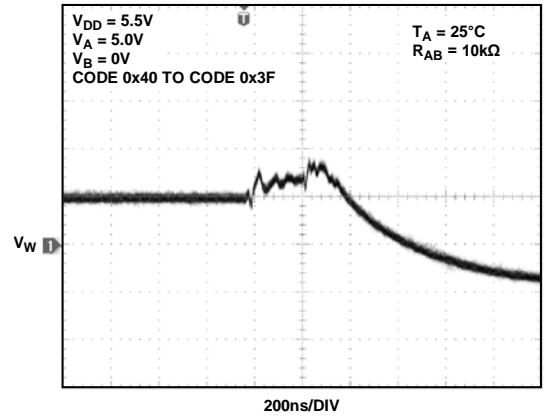


Figure 25. Midscale Glitch, Code 0x40 to Code 0x3F

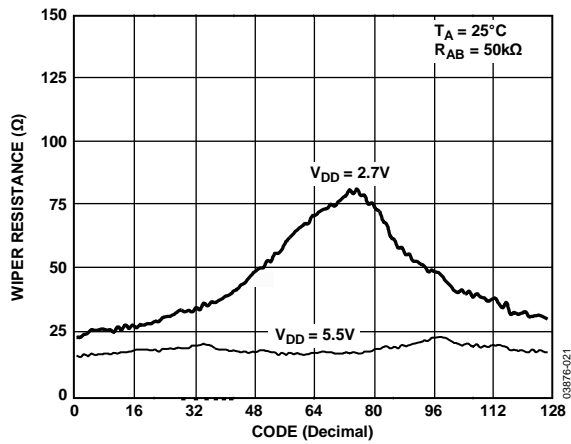


Figure 23. Wiper Resistance vs. Code vs.  $V_{DD}$

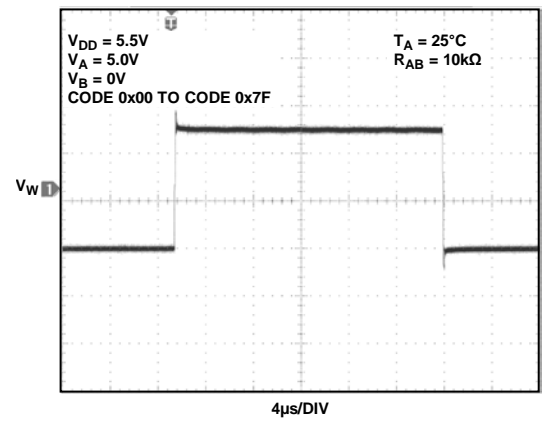


Figure 26. Large Signal Settling Time

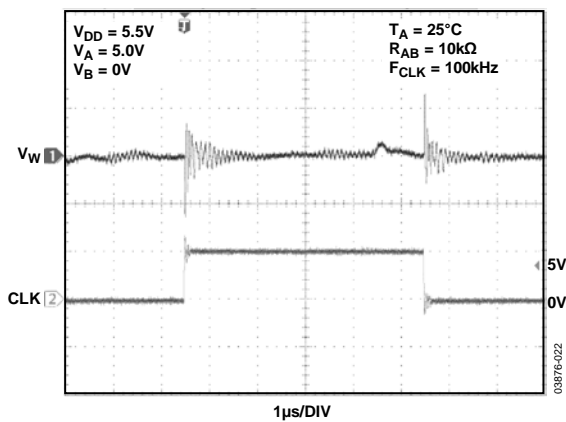


Figure 24. Digital Feedthrough

TEST CIRCUITS

Figure 27 to Figure 32 define the test conditions used in the Specifications section.

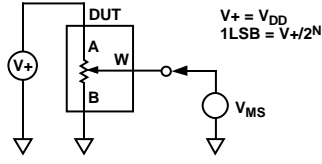


Figure 27. Potentiometer Divider Nonlinearity Error (INL, DNL)

03876-025

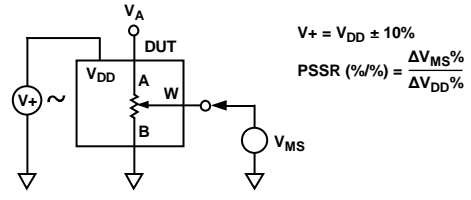


Figure 30. Power Supply Sensitivity (PSS, PSSR)

03876-028

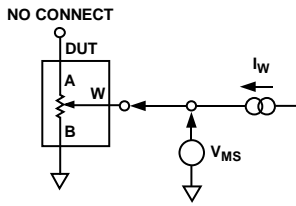


Figure 28. Resistor Position Nonlinearity Error (R-INL, R-DNL)

03876-026

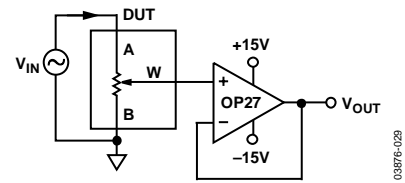


Figure 31. Gain vs. Frequency

03876-029

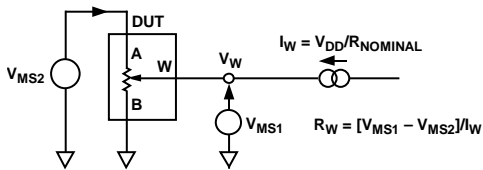


Figure 29. Wiper Resistance

03876-027

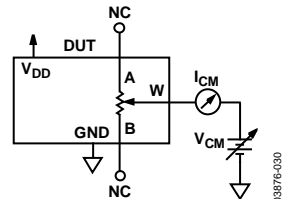


Figure 32. Common-Mode Leakage Current

03876-030

## I<sup>2</sup>C INTERFACE

The following abbreviations are used in this section:

- S = start condition
- P = stop condition
- A = acknowledge
- X = don't care
- $\overline{W}$  = write
- R = read
- A6, A5, A4, A3, A2, A1, A0 = address bits
- D6, D5, D4, D3, D2, D1, D0 = data bits

Table 6. Write Mode

| S | A6                 | A5 | A4 | A3 | A2 | A1 | A0 | $\overline{W}$ | A | X         | D6 | D5 | D4 | D3 | D2 | D1 | D0 | A | P |
|---|--------------------|----|----|----|----|----|----|----------------|---|-----------|----|----|----|----|----|----|----|---|---|
|   | Slave Address Byte |    |    |    |    |    |    |                |   | Data Byte |    |    |    |    |    |    |    |   |   |

Table 7. Read Mode

| S | A6                 | A5 | A4 | A3 | A2 | A1 | A0 | R | A | 0         | D6 | D5 | D4 | D3 | D2 | D1 | D0 | A | P |
|---|--------------------|----|----|----|----|----|----|---|---|-----------|----|----|----|----|----|----|----|---|---|
|   | Slave Address Byte |    |    |    |    |    |    |   |   | Data Byte |    |    |    |    |    |    |    |   |   |

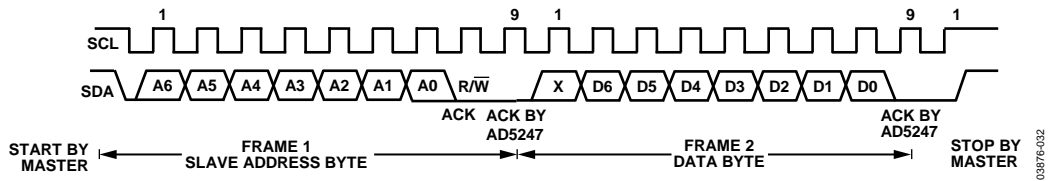


Figure 33. Writing to the RDAC Register

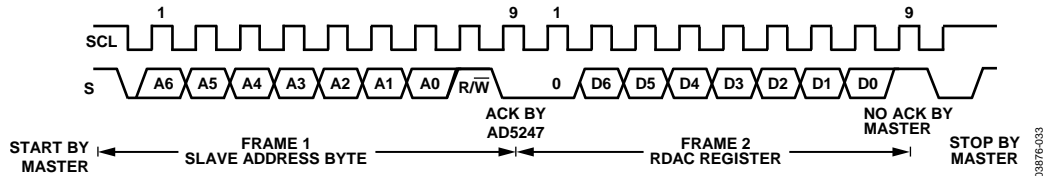


Figure 34. Reading from the RDAC Register

Table 8. I<sup>2</sup>C Slave Addresses

| Model             | Slave Addresses |    |    |    |    |    |    | Model              | Slave Address |    |    |    |    |    |    |
|-------------------|-----------------|----|----|----|----|----|----|--------------------|---------------|----|----|----|----|----|----|
|                   | A6              | A5 | A4 | A3 | A2 | A1 | A0 |                    | A6            | A5 | A4 | A3 | A2 | A1 | A0 |
| AD5247BKS5-R2     | 0               | 1  | 0  | 1  | 1  | 1  | 0  | AD5247BKS50-RL7    | 0             | 1  | 0  | 1  | 1  | 1  | 0  |
| AD5247BKS5-RL7    | 0               | 1  | 0  | 1  | 1  | 1  | 0  | AD5247BKSZ50-RL7   | 0             | 1  | 0  | 1  | 1  | 1  | 0  |
| AD5247BKSZ5-RL7   | 0               | 1  | 0  | 1  | 1  | 1  | 0  | AD5247BKS100-R2    | 0             | 1  | 0  | 1  | 1  | 1  | 0  |
| AD5247BKS10-R2    | 0               | 1  | 0  | 1  | 1  | 1  | 0  | AD5247BKSZ100-R2   | 0             | 1  | 0  | 1  | 1  | 1  | 0  |
| AD5247BKS10-RL7   | 0               | 1  | 0  | 1  | 1  | 1  | 0  | AD5247BKS100-RL7   | 0             | 1  | 0  | 1  | 1  | 1  | 0  |
| AD5247BKSZ10-RL7  | 0               | 1  | 0  | 1  | 1  | 1  | 0  | AD5247BKSZ100-RL7  | 0             | 1  | 0  | 1  | 1  | 1  | 0  |
| AD5247BKSZ10-1RL7 | 0               | 0  | 1  | 0  | 1  | 1  | 1  | AD5247BKSZ100-1RL7 | 0             | 0  | 1  | 0  | 1  | 1  | 1  |
| AD5247BKSZ10-2RL7 | 0               | 0  | 1  | 0  | 1  | 1  | 0  | AD5247BKSZ100-2RL7 | 0             | 0  | 1  | 0  | 1  | 1  | 0  |
| AD5247BKS50-R2    | 0               | 1  | 0  | 1  | 1  | 1  | 0  |                    |               |    |    |    |    |    |    |

## THEORY OF OPERATION

The AD5247 is a 128-position, digitally-controlled variable resistor (VR) device. An internal power-on preset places the wiper at midscale during power-on, which simplifies the default condition recovery at power-up.

### PROGRAMMING THE VARIABLE RESISTOR

#### Rheostat Operation

The nominal resistance ( $R_{AB}$ ) of the RDAC between Terminal A and Terminal B is available in 5 k $\Omega$ , 10 k $\Omega$ , 50 k $\Omega$ , and 100 k $\Omega$ . The final two or three digits of the part number determine the nominal resistance value; for example, 10 k $\Omega$  = 10 and 50 k $\Omega$  = 50. The  $R_{AB}$  of the VR has 128 contact points accessed by the wiper terminal, plus the B terminal contact. The 7-bit data in the RDAC latch is decoded to select one of the 128 possible settings.

Assuming a 10 k $\Omega$  part is used, the wiper's first connection starts at the B terminal for Data 0x00. Because there is a 50  $\Omega$  wiper contact resistance, such a connection yields a minimum of 100  $\Omega$  ( $2 \times 50 \Omega$ ) resistance between Terminal W and Terminal B. The second connection is the first tap point, corresponding to 178  $\Omega$  ( $R_{WB} = R_{AB}/128 + R_W = 78 \Omega + 2 \times 50 \Omega$ ) for Data 0x01. The third connection is the next tap point, representing 256  $\Omega$  ( $2 \times 78 \Omega + 2 \times 50 \Omega$ ) for Data 0x02, and so on. Each LSB data value increase moves the wiper up the resistor ladder until the last tap point is reached at 10,100  $\Omega$  ( $R_{AB} + 2 \times R_W$ ).

Figure 35 shows a simplified diagram of the equivalent RDAC circuit where the last resistor string is not accessed.

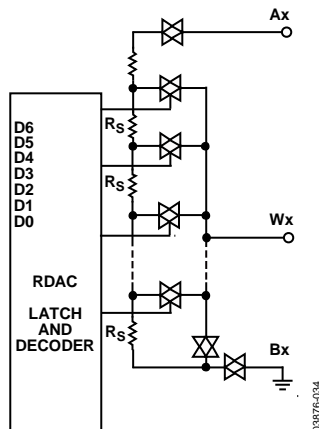


Figure 35. AD5247 Equivalent RDAC Circuit

The general equation determining the digitally programmed output resistance between W and B is

$$R_{WB}(D) = \frac{D}{128} \times R_{AB} + 2 \times R_W \quad (1)$$

where:

$D$  is the decimal equivalent of the binary code loaded in the 7-bit RDAC register.

$R_{AB}$  is the end-to-end resistance.

$R_W$  is the wiper resistance contributed by the on resistance of the internal switch.

In summary, if  $R_{AB} = 10 \text{ k}\Omega$  and the Terminal A is open-circuited, the output resistance  $R_{WB}$ , shown in Table 9, is set for the indicated RDAC latch codes.

Table 9. Codes and Corresponding  $R_{WB}$  Resistance

| D (Decimal) | $R_{WB}$ ( $\Omega$ ) | Output State                           |
|-------------|-----------------------|--|
| 127         | 10,072                | Full scale ( $R_{AB} + 2 \times R_W$ ) |
| 64          | 5150                  | Midscale                               |
| 1           | 228                   | 1 LSB                                  |
| 0           | 150                   | Zero scale (wiper contact resistance)  |

Note that in the zero-scale condition, a finite resistance of 100  $\Omega$  between Terminal W and Terminal B is present. Care should be taken to limit the current flow between W and B in this state to a maximum pulse current of no more than 20 mA. Otherwise, degradation or possible destruction of the internal switch contact can occur.

Similar to the mechanical potentiometer, the resistance of the RDAC between Wiper W and Terminal A also produces a digitally controlled complementary resistance,  $R_{WA}$ . When these terminals are used, the Terminal B can be opened. Set the resistance value for  $R_{WA}$  to start at a maximum value of resistance and to decrease the data loaded in the latch increases in value. The general equation for this operation is

$$R_{WA}(D) = \frac{128 - D}{128} \times R_{AB} + 2 \times R_W \quad (2)$$

If  $R_{AB} = 10 \text{ k}\Omega$  and the B terminal is open-circuited, the output resistance,  $R_{WA}$ , shown in Table 10, is set for the indicated RDAC latch codes.

Table 10. Codes and Corresponding  $R_{WA}$  Resistance

| D (Decimal) | $R_{WA}$ ( $\Omega$ ) | Output State |
|-------------|-----------------------|--------------|
| 127         | 228                   | Full scale   |
| 64          | 5150                  | Midscale     |
| 1           | 10,071                | 1 LSB        |
| 0           | 10,150                | Zero scale   |

Typical device-to-device matching is process lot dependent and can vary by up to  $\pm 30\%$ . Because the resistance element is processed in thin film technology, the change in  $R_{AB}$  with temperature has a very low 45 ppm/ $^{\circ}\text{C}$  temperature coefficient.

## PROGRAMMING THE POTENTIOMETER DIVIDER

### Voltage Output Operation

The digital potentiometer easily generates a voltage divider at wiper-to-B and wiper-to-A, proportional to the input voltage at A-to-B. Unlike the polarity of  $V_{DD}$  to GND, which must be positive, voltage across A-to-B, W-to-A, and W-to-B can be at either polarity.

If ignoring the effect of the wiper resistance for approximation, connecting the Terminal A to 5 V and the Terminal B to ground produces an output voltage at the wiper-to-B starting at 0 V up to 1 LSB less than 5 V. Each LSB of voltage is equal to the voltage applied across Terminal A and Terminal B divided by the 128 positions of the potentiometer divider. The general equation defining the output voltage at  $V_W$  with respect to ground for any valid input voltage applied to Terminal A and Terminal B is

$$V_W(D) = \frac{D}{128} \times V_A \quad (3)$$

A more accurate calculation that includes the effect of wiper resistance,  $V_W$ , is

$$V_W(D) = \frac{R_{WB}(D)}{R_{AB}} \times V_A \quad (4)$$

Operation of the digital potentiometer in the divider mode results in a more accurate operation over temperature. Unlike rheostat mode, divider mode makes the output voltage mainly on the ratio of Internal Resistor  $R_{WA}$  to Internal Resistor  $R_{WB}$ , and not the absolute values. Therefore, the temperature drift reduces to 15 ppm/°C.

### I<sup>2</sup>C-COMPATIBLE 2-WIRE SERIAL BUS

The first byte of the AD5247 is a slave address byte (see the I<sup>2</sup>C Interface section). It has a 7-bit slave address and an R/W bit. The 5 kΩ and 50 kΩ options support one 7-bit slave address while the 10 kΩ and 100 kΩ options each have three hard-coded slave address options available (see Table 8 for a full list of slave address locations). The extra hard coded slave addresses on the 10 kΩ and 100 kΩ options allow users to employ up to three of these devices on one I<sup>2</sup>C bus. The seven MSBs of the slave address are followed by 0 for a write command or 1 to place the device in read mode.

The 2-wire I<sup>2</sup>C serial bus protocol operates as follows:

1. The master initiates a data transfer by establishing a start condition, which is when a high-to-low transition on the SDA line occurs while SCL is high (see Figure 33). The following byte is the slave address byte, consisting of the 7-bit slave address followed by an R/W bit (this bit determines whether data is read from or written to the slave device). The slave, whose address corresponds to the transmitted address, responds by pulling the SDA line low during the ninth clock pulse (this is termed the acknowledge bit). At this stage, all other devices on the bus remain idle while the selected device waits for data to be written to or read from its serial register. If the R/W bit is high, the master reads from the slave device. If the R/W bit is low, the master writes to the slave device.
2. In write mode, after acknowledgement of the slave address byte, the next byte is the data byte. Data is transmitted over the serial bus in sequences of nine clock pulses (eight data bits followed by an acknowledge bit). The transitions on the SDA line must occur during the low period of SCL and remain stable during the high period of SCL (see Figure 33).
3. In read mode, after acknowledgment of the slave address byte, data is received over the serial bus in sequences of nine clock pulses (a slight difference from write mode, where eight data bits are followed by an acknowledge bit). Similarly, the transitions on the SDA line must occur during the low period of SCL and remain stable during the high period of SCL (see Figure 34).
4. When all data bits have been read or written, a stop condition is established by the master. A stop condition is defined as a low-to-high transition on the SDA line while SCL is high. In write mode, the master pulls the SDA line high during the 10<sup>th</sup> clock pulse to establish a stop condition (see Figure 33). In read mode, the master issues a no acknowledge for the ninth clock pulse (that is, the SDA line remains high). The master then brings the SDA line low before the 10<sup>th</sup> clock pulse, which goes high to establish a stop condition (see Figure 34).

A repeated write function gives the user flexibility to update the RDAC output a number of times after addressing the part only once. For example, after the RDAC has acknowledged its slave address in the write mode, the RDAC output updates on each successive byte. If different instructions are needed, the write/read mode has to start again with a new slave address and data byte. Similarly, a repeated read function of the RDAC is also allowed.

**LEVEL SHIFTING FOR BIDIRECTIONAL INTERFACE**

While most legacy systems can be operated at one voltage, a new component can be optimized at another voltage. When two systems operate the same signal at two different voltages, proper level shifting is needed. For instance, users can employ a 3.3 V E<sup>2</sup>PROM to interface with a 5 V digital potentiometer. A level shifting scheme is needed to enable a bidirectional communication so that the setting of the digital potentiometer can be stored in and retrieved from the E<sup>2</sup>PROM. Figure 36 shows one of the level-shifting implementations. M1 and M2 can be any N-channel signal FETs, or if V<sub>DD</sub> falls below 2.5 V, M1 and M2 can be low threshold FETs such as the FDV301N.

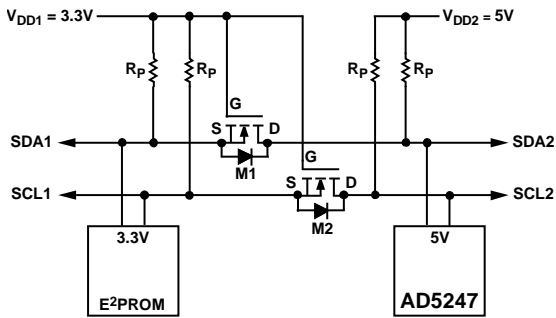


Figure 36. Level-Shifting for Operation at Different Potentials

**ESD PROTECTION**

All digital inputs are protected with a series input resistor and parallel Zener ESD structures as shown in Figure 37. This applies to digital input pins (SDA and SCL).

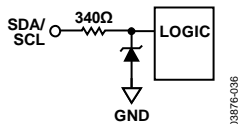


Figure 37. ESD Protection of Digital Pins

**TERMINAL VOLTAGE OPERATING RANGE**

The AD5247 V<sub>DD</sub> and GND power supply defines the boundary conditions for proper 3-terminal digital potentiometer operation. Supply signals present on Terminal A and Terminal W that exceed V<sub>DD</sub> or GND are clamped by the internal forward biased diodes (see Figure 38).

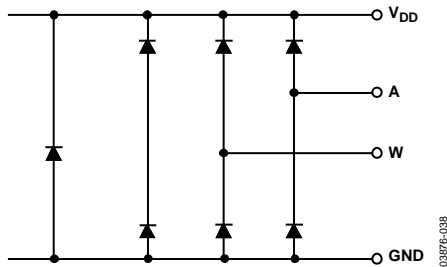


Figure 38. Maximum Terminal Voltages Set by V<sub>DD</sub> and GND

**MAXIMUM OPERATING CURRENT**

At low code values, the user should be aware that, due to low resistance values, the current through the RDAC might exceed the 5 mA limit. In Figure 39, a 5 V supply is placed on the wiper, and the current through Terminal W and Terminal B is plotted with respect to code. A line is also drawn denoting the 5 mA current limit. Note that at low code values (particularly for the 5 kΩ and 10 kΩ options), the current level increases significantly. Care should be taken to limit the current flow between W and B in this state to a maximum continuous current of 5 mA and a maximum pulse current of no more than 20 mA. Otherwise, degradation or possible destruction of the internal switch contacts can occur.

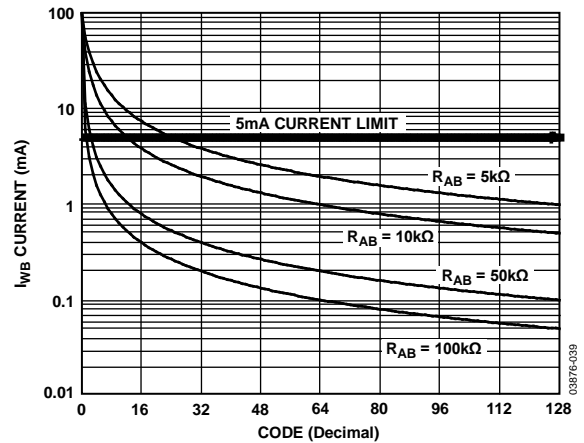


Figure 39. Maximum Operating Current

**POWER-UP SEQUENCE**

Because the ESD protection diodes limit the voltage compliance at Terminal A and Terminal W (see Figure 38), it is important to power V<sub>DD</sub>/GND before applying any voltage to Terminal A and Terminal W; otherwise, the diode is forward-biased such that V<sub>DD</sub> is powered unintentionally and can affect the rest of the user's circuit. The ideal power-up sequence is in the following order: GND, V<sub>DD</sub>, digital inputs, V<sub>A</sub>, and V<sub>W</sub>. The relative order of powering V<sub>A</sub> and V<sub>W</sub> and the digital inputs is not important as long as they are powered after V<sub>DD</sub>/GND.

## LAYOUT AND POWER SUPPLY BYPASSING

It is good practice to employ a compact, minimum lead-length layout design. The leads to the inputs should be as direct as possible with minimum conductor length. Ground paths should have low resistance and low inductance.

Similarly, it is good practice to bypass the power supplies with quality capacitors for optimum stability. Supply leads to the device should be bypassed with 0.01  $\mu\text{F}$  to 0.1  $\mu\text{F}$  disc or chip ceramic capacitors. Low ESR 1  $\mu\text{F}$  to 10  $\mu\text{F}$  tantalum or electrolytic capacitors should also be applied at the supplies to minimize any transient disturbance and low frequency ripple (see Figure 40). Note that the digital ground should also be joined remotely to the analog ground at one point to minimize the ground bounce.

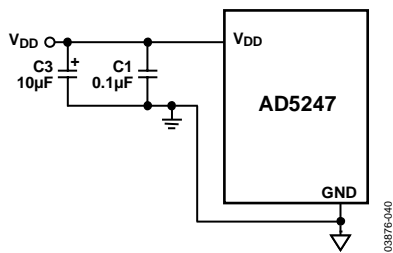


Figure 40. Power Supply Bypassing

## CONSTANT BIAS TO RETAIN RESISTANCE SETTING

For users who desire nonvolatility but cannot justify the additional cost for the EEMEM, the AD5247 can be considered a low cost alternative because it maintains a constant bias to retain the wiper setting. The AD5247 is specifically designed with low power in mind, which allows low power consumption even in battery-operated systems.

Figure 41 demonstrates the power consumption from a 3.4 V 450 mA/hr Li-Ion cell phone battery, which is connected to the

AD5247. The measurement over time shows that the device draws approximately 1.3  $\mu\text{A}$  and consumes negligible power. Over a course of 30 days, the battery was depleted by less than 2%, the majority of which was due to the intrinsic leakage current of the battery itself.

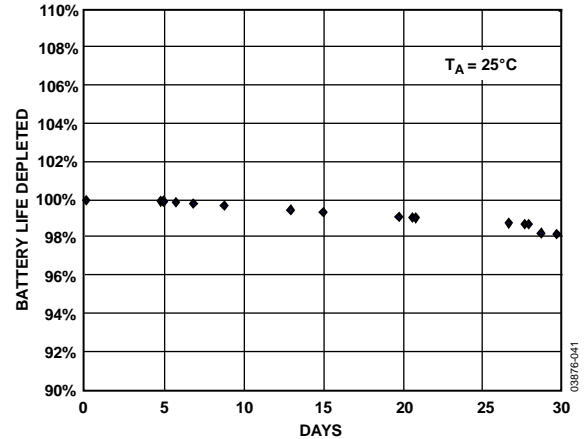
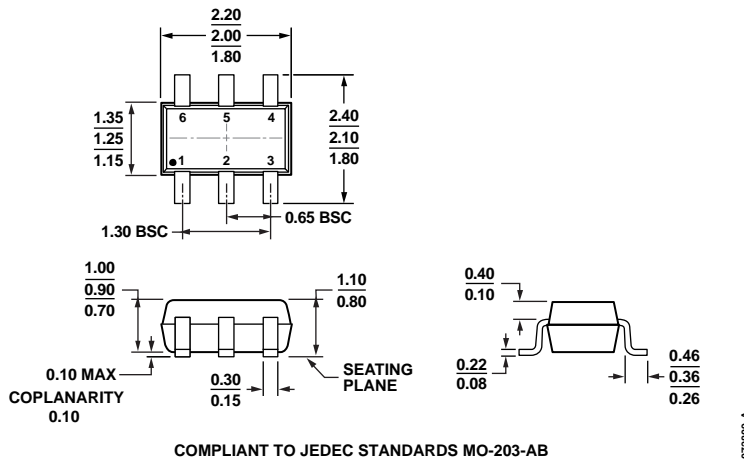


Figure 41. Battery Operating Life Depletion

This demonstrates that constantly biasing the potentiometer is a practical approach. Most portable devices do not require the removal of batteries for charging. Although the resistance setting of the AD5247 is lost when the battery needs replacement, such events occur rather infrequently. As a result, this inconvenience is justified by the lower cost and smaller size offered by the AD5247. If total power is lost, the user should be provided with a means to adjust the setting accordingly.

OUTLINE DIMENSIONS



COMPLIANT TO JEDEC STANDARDS MO-203-AB  
 Figure 42. 6-Lead Thin Shrink Small Outline Transistor Package [SC70]  
 (KS-6)  
 Dimensions shown in millimeters

ORDERING GUIDE

| Model <sup>1</sup> | R <sub>AB</sub> (kΩ) | Temperature Range | Package Description <sup>2</sup>                           | Package Option | Branding |
|--------------------|----------------------|-------------------|--|----------------|----------|
| AD5247BKSZ5-RL7    | 5                    | -40°C to +125°C   | 6-lead Thin Shrink Small Outline Transistor Package [SC70] | KS-6           | D96      |
| AD5247BKSZ10-RL7   | 10                   | -40°C to +125°C   | 6-lead Thin Shrink Small Outline Transistor Package [SC70] | KS-6           | D95      |
| AD5247BKSZ10-1RL7  | 10                   | -40°C to +125°C   | 6-lead Thin Shrink Small Outline Transistor Package [SC70] | KS-6           | D5E      |
| AD5247BKSZ10-2RL7  | 10                   | -40°C to +125°C   | 6-lead Thin Shrink Small Outline Transistor Package [SC70] | KS-6           | DAK      |
| AD5247BKSZ50-RL7   | 50                   | -40°C to +125°C   | 6-lead Thin Shrink Small Outline Transistor Package [SC70] | KS-6           | D97      |
| AD5247BKSZ100-R2   | 100                  | -40°C to +125°C   | 6-lead Thin Shrink Small Outline Transistor Package [SC70] | KS-6           | D98      |
| AD5247BKSZ100-RL7  | 100                  | -40°C to +125°C   | 6-lead Thin Shrink Small Outline Transistor Package [SC70] | KS-6           | D98      |
| AD5247BKSZ100-1RL7 | 100                  | -40°C to +125°C   | 6-lead Thin Shrink Small Outline Transistor Package [SC70] | KS-6           | DAJ      |
| AD5247BKSZ100-2RL7 | 100                  | -40°C to +125°C   | 6-lead Thin Shrink Small Outline Transistor Package [SC70] | KS-6           | DAL      |
| EVAL-AD5247DBZ     |                      |                   | Evaluation Board   |                |          |

<sup>1</sup> Z = RoHS compliant part.

<sup>2</sup> The evaluation board is shipped with the 10 kΩ R<sub>AB</sub> resistor option; however, the board is compatible with all available resistor value options.

**NOTES**

**NOTES**

I<sup>2</sup>C refers to a communications protocol originally developed by Philips Semiconductors (now NXP Semiconductors).

## Looking for pricing, stock, or lifecycle information?

Click below to explore more details on WIN SOURCE:

⊖ [View AD5247BKSZ10-2RL7 on WIN SOURCE](#)

⊖ [Analog Devices Inc. Information](#)

## Optimize Your Supply Chain with WIN SOURCE Solutions

- ✓ Global Sourcing Solution
- ✓ Obsolete Management
- ✓ Cost Control Management
- ✓ Shortage Management
- ✓ Alternative Solution
- ✓ Excess Inventory Management