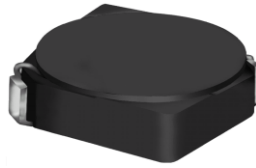




**THE DATASHEET OF  
CDRH4D18NP-2R7NC**



# SMD Power Inductor CDRH4D18



## Description

- Ferrite drum core construction.
- Magnetically shielded.
- L × W × H: 5.0 × 5.0 × 2.0 mm Max.
- Product weight: 137mg(Ref.)
- Moisture Sensitivity Level: 1
- RoHS compliance.

## Environmental Data

- Operating temperature range: -40°C ~ +100°C (including coil's self temperature rise)
- Storage temperature range: -40°C ~ +100°C
- Solder reflow temperature: 260 °C peak.

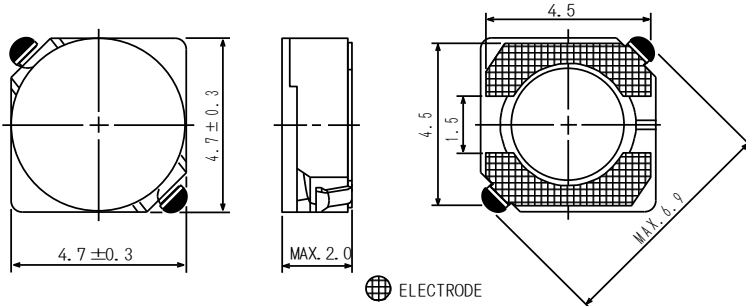
## Packaging

- Carrier tape and reel packaging
- 7.0" diameter reel
- 1000pcs per reel

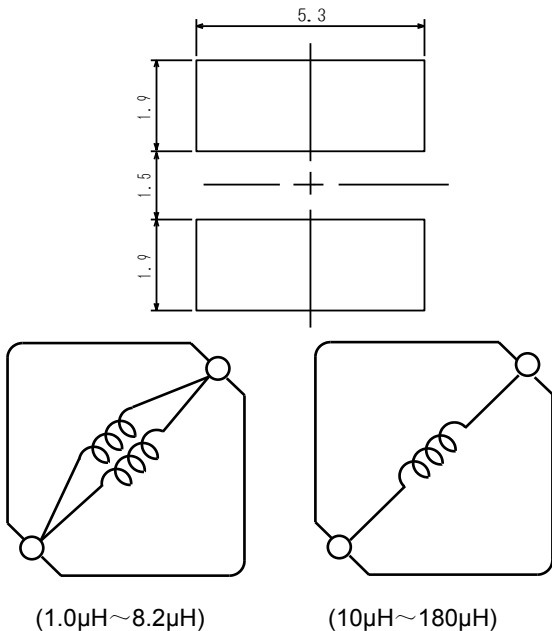
## Applications

- Ideally used in Mobile phone, PDA, MP3, HDD, DSC/DVC, Note book PC, etc as DC-DC converter inductors.

## Dimension - [mm]



## Land pattern and Schematics - [mm]



# SMD Power Inductor

## CDRH4D18



### Electrical Characteristics

Part No.	Stamp	Inductance ( $\mu\text{H}$ ) [ within ] ※1	D.C.R.( $\Omega$ ) Max. (Typ.) (at 20°C)	Rated Current (A) ※2
CDRH4D18NP-1R0NC	1R0	1.0 $\pm$ 30%	45m(35m)	1.72
CDRH4D18NP-2R2NC	2R2	2.2 $\pm$ 30%	75m(58m)	1.32
CDRH4D18NP-2R7NC	2R7	2.7 $\pm$ 30%	105m(80m)	1.28
CDRH4D18NP-3R3NC	3R3	3.3 $\pm$ 30%	110m(85m)	1.04
CDRH4D18NP-3R9NC	3R9	3.9 $\pm$ 30%	155m(120m)	0.88
CDRH4D18NP-4R7NC	4R7	4.7 $\pm$ 30%	162m(125m)	0.84
CDRH4D18NP-5R6NC	5R6	5.6 $\pm$ 30%	170m(130m)	0.80
CDRH4D18NP-6R8NC	6R8	6.8 $\pm$ 30%	200m(155m)	0.76
CDRH4D18NP-8R2NC	8R2	8.2 $\pm$ 30%	245m(190m)	0.68
CDRH4D18NP-100NC	100	10 $\pm$ 30%	200m(148m)	0.61
CDRH4D18NP-120NC	120	12 $\pm$ 30%	210m(156m)	0.56
CDRH4D18NP-150NC	150	15 $\pm$ 30%	240m(178m)	0.50
CDRH4D18NP-180NC	180	18 $\pm$ 30%	338m(250m)	0.48
CDRH4D18NP-220NC	220	22 $\pm$ 30%	397m(294m)	0.41
CDRH4D18NP-270NC	270	27 $\pm$ 30%	441m(327m)	0.35
CDRH4D18NP-330NC	330	33 $\pm$ 30%	694m(514m)	0.32
CDRH4D18NP-390NC	390	39 $\pm$ 30%	709m(525m)	0.30
CDRH4D18NP-470NC	470	47 $\pm$ 30%	922m(683m)	0.28
CDRH4D18NP-560NC	560	56 $\pm$ 30%	1.08(800m)	0.26
CDRH4D18NP-680NC	680	68 $\pm$ 30%	1.30(1.00)	0.24
CDRH4D18NP-820NC	820	82 $\pm$ 30%	1.56(1.20)	0.22
CDRH4D18NP-101NC	101	100 $\pm$ 30%	1.73(1.33)	0.20
CDRH4D18NP-121NC	121	120 $\pm$ 30%	2.39(1.84)	0.18
CDRH4D18NP-151NC	151	150 $\pm$ 30%	2.67(2.05)	0.15
CDRH4D18NP-181NC	181	180 $\pm$ 30%	4.00(3.05)	0.14

※1. Inductance measuring condition: 1.0 $\mu\text{H}$  ~ 8.2 $\mu\text{H}$  at 7.96 MHz  
 10 $\mu\text{H}$  ~ 180 $\mu\text{H}$  at 100 kHz

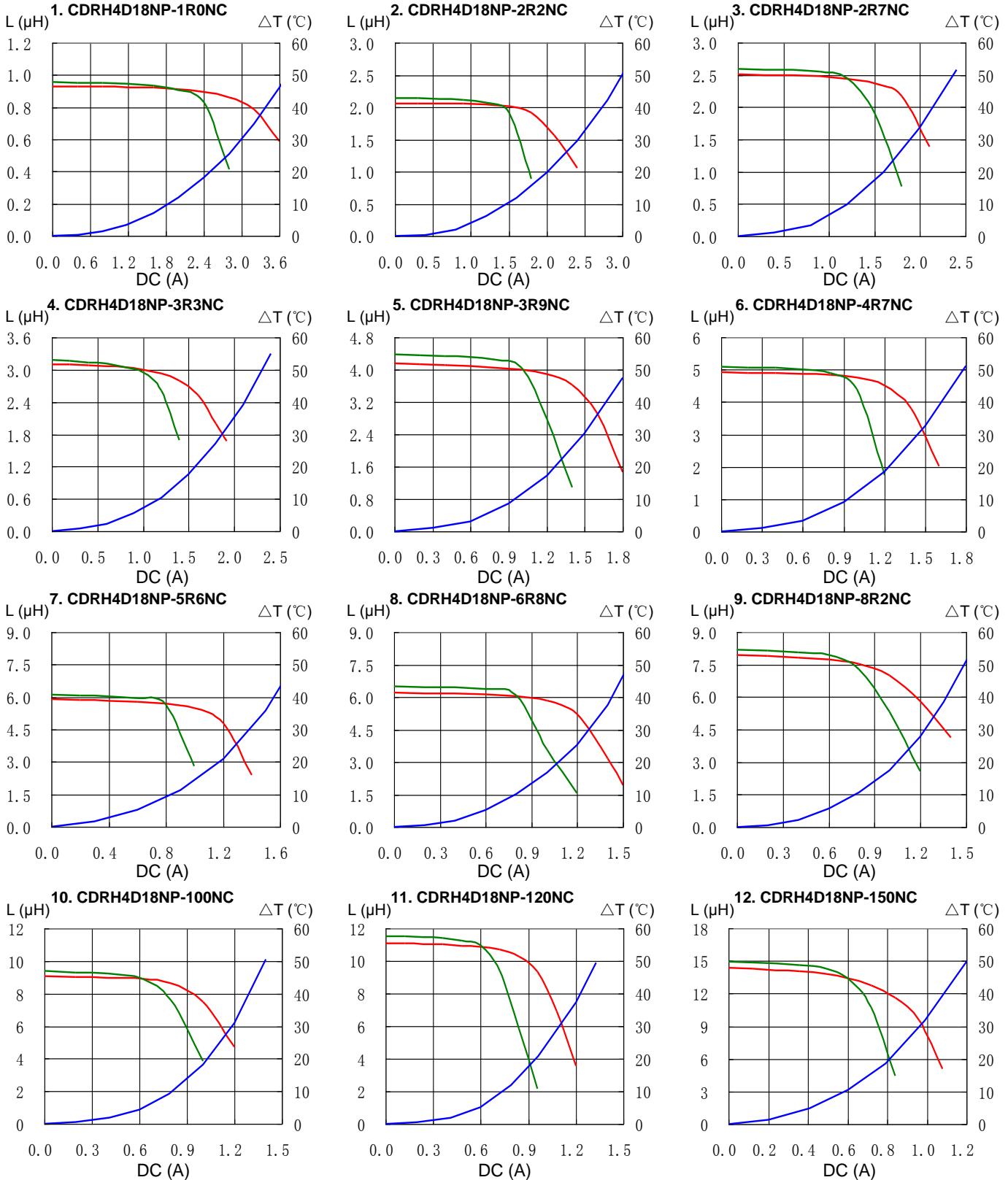
※2. Rated current: The DC current at which the inductance decreases to 65% of its nominal value or when  $\Delta t=40^\circ\text{C}$ , whichever is lower ( $T_a=20^\circ\text{C}$ ).

# SMD Power Inductor CDRH4D18



## Saturation Current & Temperature Rise Graph

— L (20°C) — L (100°C) —  $\Delta T$

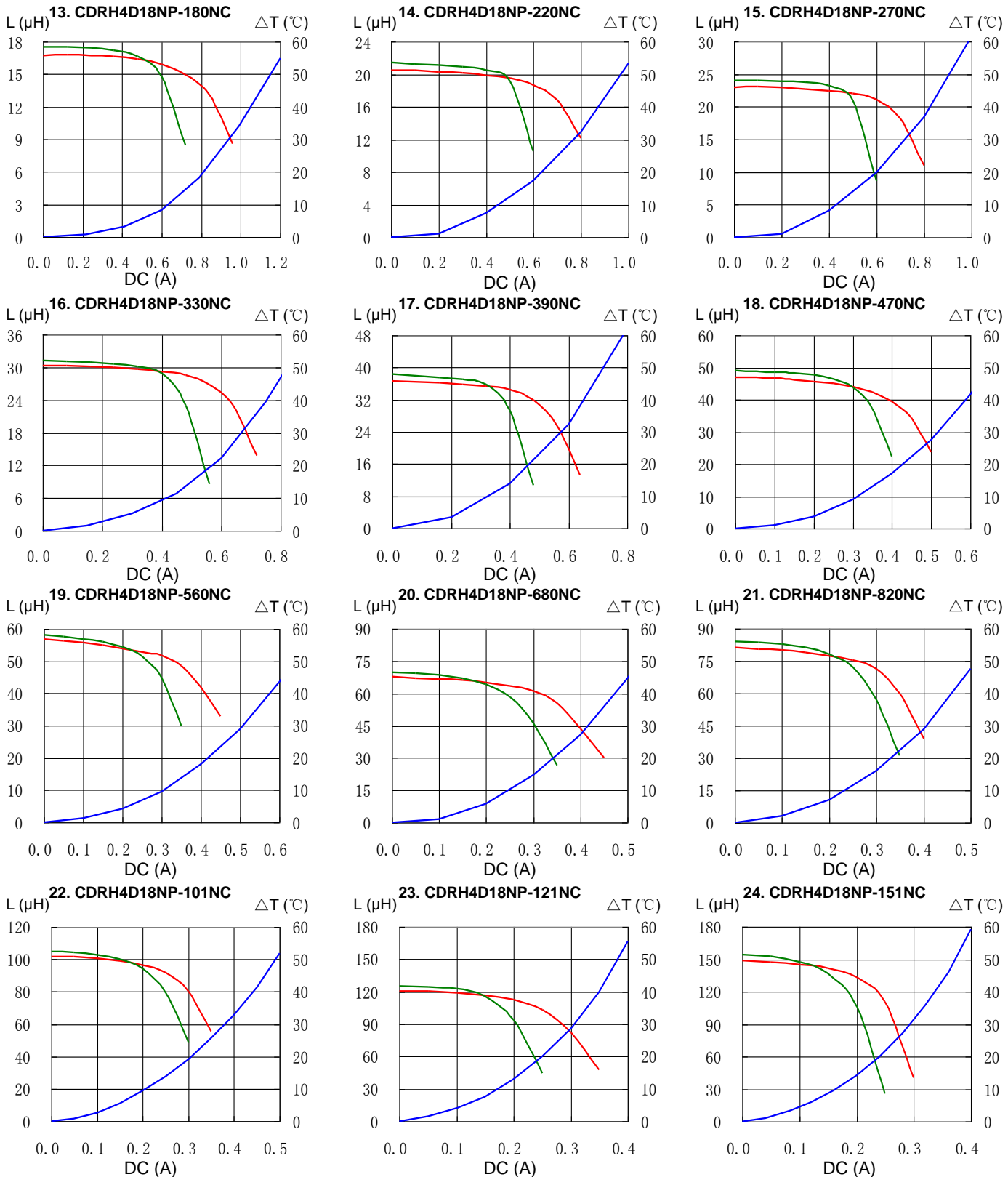


# SMD Power Inductor CDRH4D18



## Saturation Current & Temperature Rise Graph

— L (20°C) — L (100°C) —  $\Delta T$

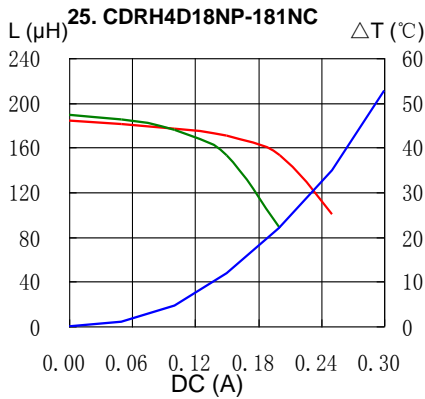


# SMD Power Inductor CDRH4D18



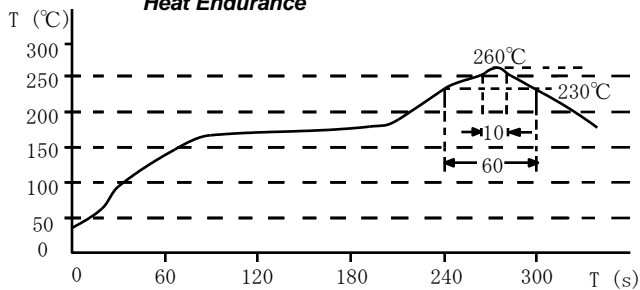
## Saturation Current & Temperature Rise Graph

— L (20°C) — L (100°C) —  $\Delta T$

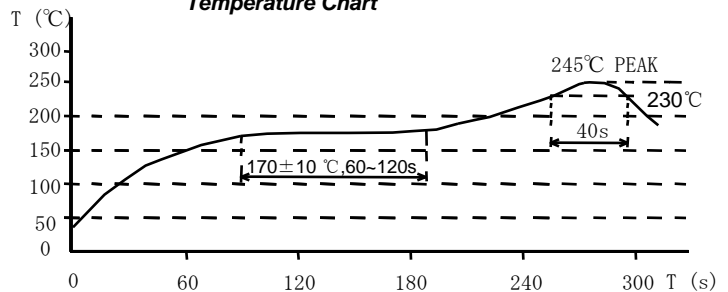


## Solder Reflow Condition

Heat Endurance



Temperature Chart



Please refer to the sales offices on our website - <http://www.sumida.com>

### Hong Kong

Tel.+852-2880-6781  
FAX.+852-2565-9600  
[sales@hk.sumida.com](mailto:sales@hk.sumida.com)

### Saitama(Japan)

Tel.+81-48-691-7300  
FAX.+81-48-691-7340  
[sales@jp.sumida.com](mailto:sales@jp.sumida.com)

### Chicago

Tel.+1-847-545-6700  
FAX. +1-847-545-6720  
[sales@us.sumida.com](mailto:sales@us.sumida.com)

### Shanghai

Tel.+86-21-5836-3299  
FAX.+86-21-5836-3266  
[shanghai.sales@cn.sumida.com](mailto:shanghai.sales@cn.sumida.com)

### Seoul

Tel.+82-2-6237-0777  
FAX.+82-2-6237-0778  
[sales@kr.sumida.com](mailto:sales@kr.sumida.com)

### Obernzell

Tel.+49-8591-937-0  
FAX. +49-8591-937-103  
[contact@eu.sumida.com](mailto:contact@eu.sumida.com)

### Shenzhen

Tel.+86-755-8291-0228  
FAX.+86-755-8291-0338  
[shenzhen.sales@cn.sumida.com](mailto:shenzhen.sales@cn.sumida.com)

### Singapore

Tel.+65-6296-3388  
FAX.+65-6841-4426  
[sales@sg.sumida.com](mailto:sales@sg.sumida.com)

### Neumarkt

Tel.+49-9181-4509-110  
FAX. +49-9181-4509-310  
[infocomp@eu.sumida.com](mailto:infocomp@eu.sumida.com)

### Taipei

Tel.+886-2-8751-2737  
FAX.+886-2-8751-2738  
[sales@tw.sumida.com](mailto:sales@tw.sumida.com)

### San Jose

Tel.+1-408-321-9660  
FAX.+1-408-321-9308  
[sales@us.sumida.com](mailto:sales@us.sumida.com)

## Looking for pricing, stock, or lifecycle information?

Click below to explore more details on WIN SOURCE:

- ⊖ [View CDRH4D18NP-2R7NC on WIN SOURCE](#)
- ⊖ [Sumida America Components Inc. Information](#)

## Optimize Your Supply Chain with WIN SOURCE Solutions

- ✓ Global Sourcing Solution
- ✓ Obsolete Management
- ✓ Cost Control Management
- ✓ Shortage Management
- ✓ Alternative Solution
- ✓ Excess Inventory Management