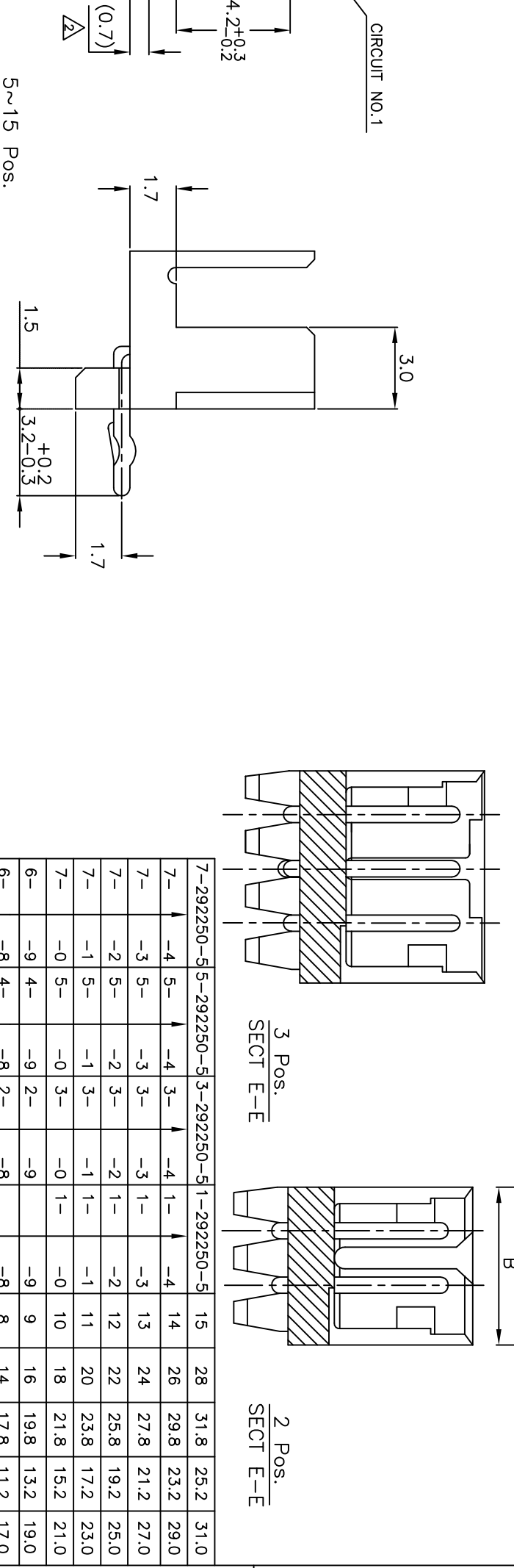
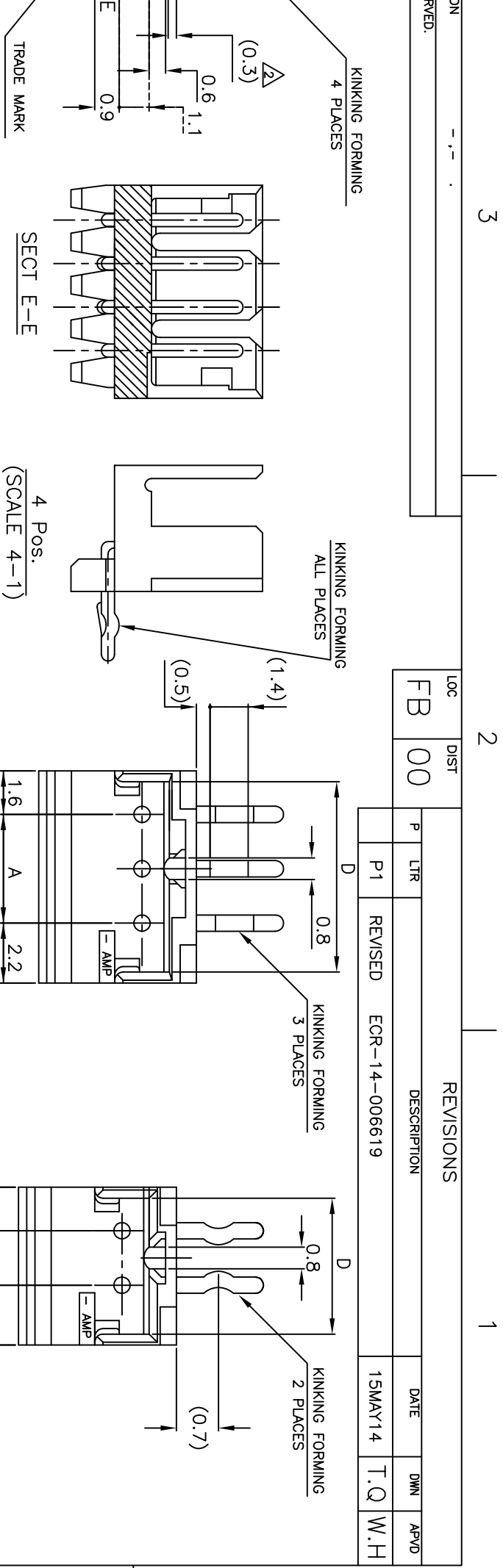




THE DATASHEET OF
292250-9



REVISED.	LOC	DIST	REVISIONS		DATE	DWN	APVD
	FB	00	P	LTR	DESCRIPTION		
			P1	REVISED	ECR-14-006619	15MAY14	T.Q W.H



7-292250-5	5-292250-5	3-292250-5	1-292250-5	15	28	31.8	25.2	31.0
7-4	5-4	3-4	1-4	14	26	29.8	23.2	29.0
7-3	5-3	3-3	1-3	13	24	27.8	21.2	27.0
7-2	5-2	3-2	1-2	12	22	25.8	19.2	25.0
7-1	5-1	3-1	1-1	11	20	23.8	17.2	23.0
7-0	5-0	3-0	1-0	10	18	21.8	15.2	21.0
6-9	4-9	2-9	-9	9	16	19.8	13.2	19.0
6-8	4-8	2-8	-8	8	14	17.8	11.2	17.0
6-7	4-7	2-7	-7	7	12	15.8	9.2	15.0
6-6	4-6	2-6	-6	6	10	13.8	7.2	13.0
6-5	4-5	2-5	-5	5	8	11.8	5.2	11.0
6-4	4-4	2-4	-4	4	6	9.8	3.2	9.0
6-3	4-3	2-3	-3	3	4	7.8	-	7.0
6-292250-2	4-292250-2	2-292250-2	292250-2	2	2	5.8	-	5.0

NOTES:
 1. MATERIAL: HOUSING - NYLON 66 (UL94V-0)
 POST - TIN BRASS
 12 POS ~ 15 POS ONLY

THIS DRAWING IS A CONTROLLED DOCUMENT.

DIMENSIONS: mm
 TOLERANCES UNLESS OTHERWISE SPECIFIED: ±0.2

6-PLC	±
4-PLC	±
3-PLC	±
2-PLC	±
1-PLC	±
4-PLC ANGLES	±

FINISH: SEE NOTE

APVD: T. SASAKI
 31JAN03

NAME: POST HEADER ASS'Y BOX-H DIP
 (AMP CT CONNECTOR 2mm PITCH)

APPLICATION SPEC: 108-60016

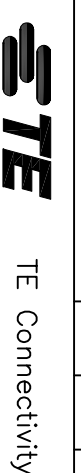
CHK: S.YAO
 31JAN03

SIZE: A3
 CAGE CODE: 00779
 DRAWING NO: G=292250

MATERIAL: SEE NOTE

WEIGHT: -

SCALE: 5:1
 SHEET: 1 OF 1
 REV: P1



A


B

C

D





Looking for pricing, stock, or lifecycle information?

Click below to explore more details on WIN SOURCE:

 [View 292250-9 on WIN SOURCE](#)

 [TE Connectivity Information](#)

Optimize Your Supply Chain with WIN SOURCE Solutions

-  Global Sourcing Solution
-  Obsolete Management
-  Cost Control Management
-  Shortage Management
-  Alternative Solution
-  Excess Inventory Management