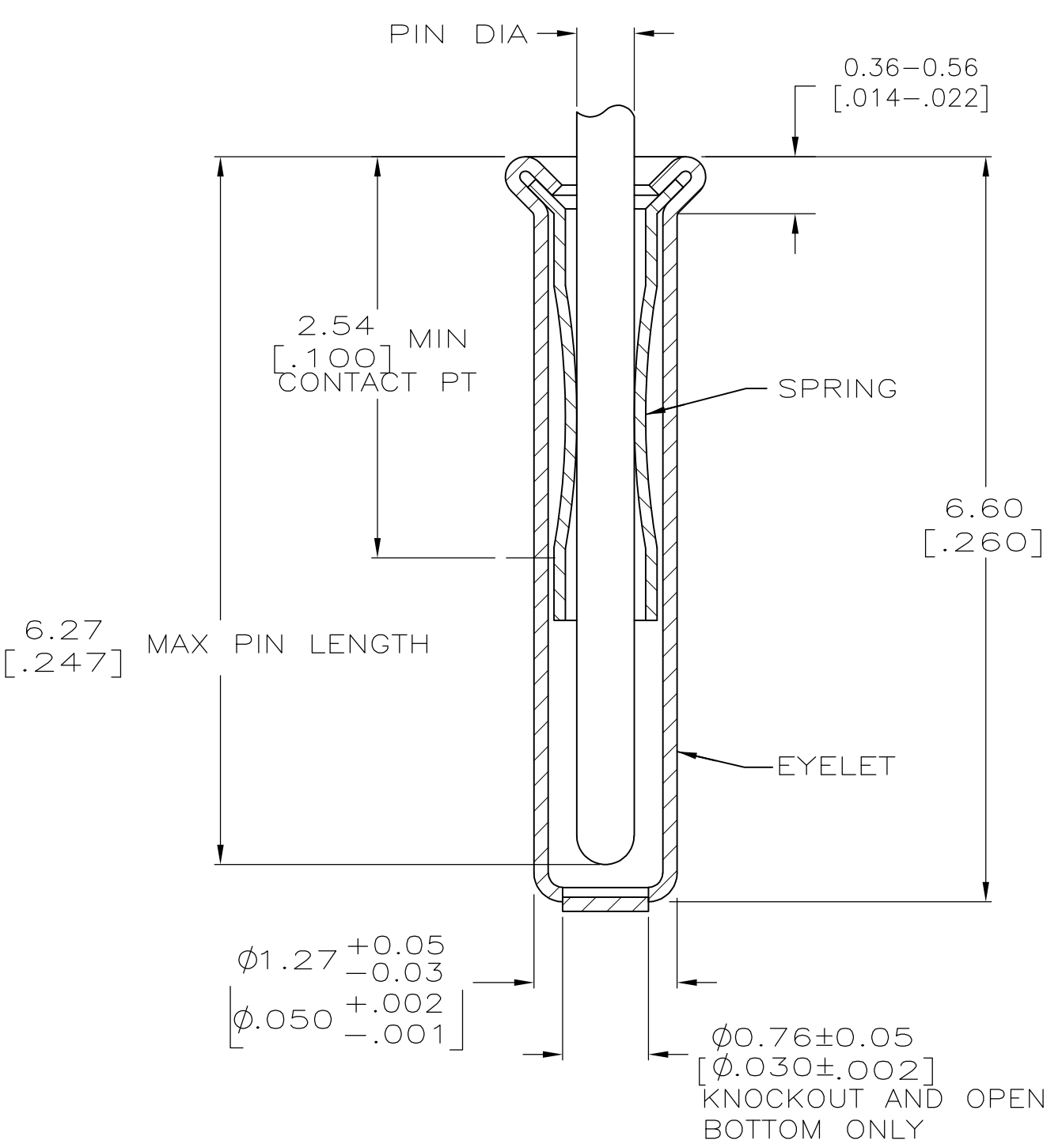
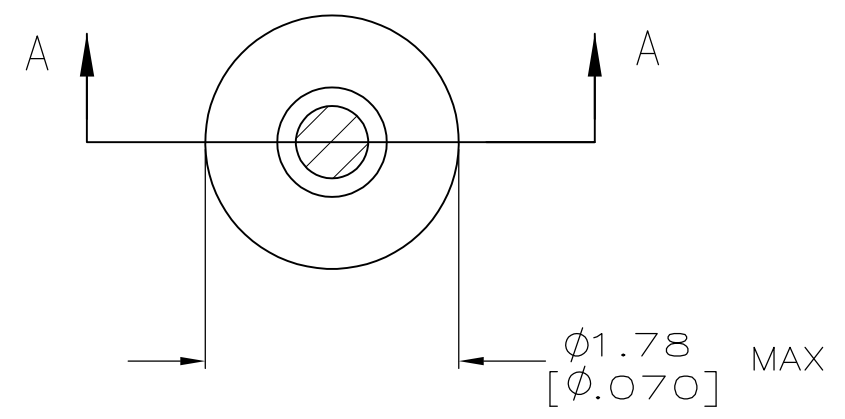




**THE DATASHEET OF**  
**50863-4**





SECTION A-A


- 1. TIN PER MIL-T-10727 OR TIN LEAD 0.00254 [.000100] MIN THK.
- 2. GOLD PER MIL-G-45204, TYPE II, 0.00076 [.000030] MIN THK OVER NICKEL PER QQ-N-290 0.00028 [.000011] MIN THK ON CONTACT AREA.
- 3. GOLD FLASH PER MIL-G-45204, TYPE II, 0.13µm [.000005] MIN THK. OVER NICKEL PLATE PER QQ-N-290 0.51µm-1.52µm [.000020-.000060] EXT THK.
- 4. RECOMMENDED HOLE SIZE, PLATED OR UNPLATED:  
 MACHINE INSERTION: 1.32 <sup>+0.03</sup>/<sub>-0.05</sub> [.052 <sup>+0.001</sup>/<sub>-0.002</sub>]  
 HAND INSERTION: 1.32 <sup>+0.10</sup>/<sub>-0.00</sub> [.052 <sup>+0.004</sup>/<sub>-0.000</sub>]
- 5. APPLICATION TOOL PART NUMBER:  
 MACHINE NO. 682127-3  
 INSERTION HEAD NO. 682039-2
- 6. TO INSURE PROPER SPRING TENSION DO NOT EXCEED A 0.10 [.004] DIFFERENCE IN PIN DIA WHEN CHANGING TO A SMALLER PIN.
- 7. BOTTOM PLUG KNOCKOUT TOOL PART NUMBER 69729 WITH TIP PART NUMBER 69728.
- 8. OBSOLETE PARTS: OBSOLETE CIS STREAMLINING PER D.RENAUD/D.SINISI

8	OBSOLETE	CLOSED	0.36-0.66 [.014-.026]	TIN 1	TIN 1	50863-8
	OBSOLETE	KNOCKOUT		GOLD 3	GOLD 2	50863-7
OBSOLETE	OPEN	TIN 1			50863-6	
OBSOLETE		CLOSED		TIN 1		50863-5
OBSOLETE		KNOCKOUT		GOLD 3		50863-4
OBSOLETE		OPEN		TIN 1		50863-3
						50863-1
						50863
	BOTTOM TYPE	RECOMMENDED PIN DIA 6	EYELET	SPRING		PART NO
			FINISH			

THIS DRAWING IS A CONTROLLED DOCUMENT.		DWN R. TALLEY 4-8-91	TE Connectivity	
		CHK S. ROBERTSON 8-22-91		
DIMENSIONS: mm[INCHES]		APVD R. MILLER 8-5-91	NAME	
TOLERANCES UNLESS OTHERWISE SPECIFIED:		PRODUCT SPEC		
0 PLC ± - 1 PLC ± - 2 PLC ± - 3 PLC ± 0.20 [.008] 4 PLC ± - ± - ANGLES		APPLICATION SPEC		
MATERIAL SPRING: BeCu, QQ-C-533 EYELET: Cu, QQ-C-576		WEIGHT -		
FINISH SEE TABLE		SIZE CAGE CODE DRAWING NO RESTRICTED TO		
		A2 00779 C-50863		
CUSTOMER DRAWING		SCALE 20:1 SHEET 1 OF 1 REV Z4		

## Looking for pricing, stock, or lifecycle information?

Click below to explore more details on WIN SOURCE:

 [View 50863-4](#) on WIN SOURCE

 [TE Connectivity](#) Information

## Optimize Your Supply Chain with WIN SOURCE Solutions

-  Global Sourcing Solution
-  Obsolete Management
-  Cost Control Management
-  Shortage Management
-  Alternative Solution
-  Excess Inventory Management