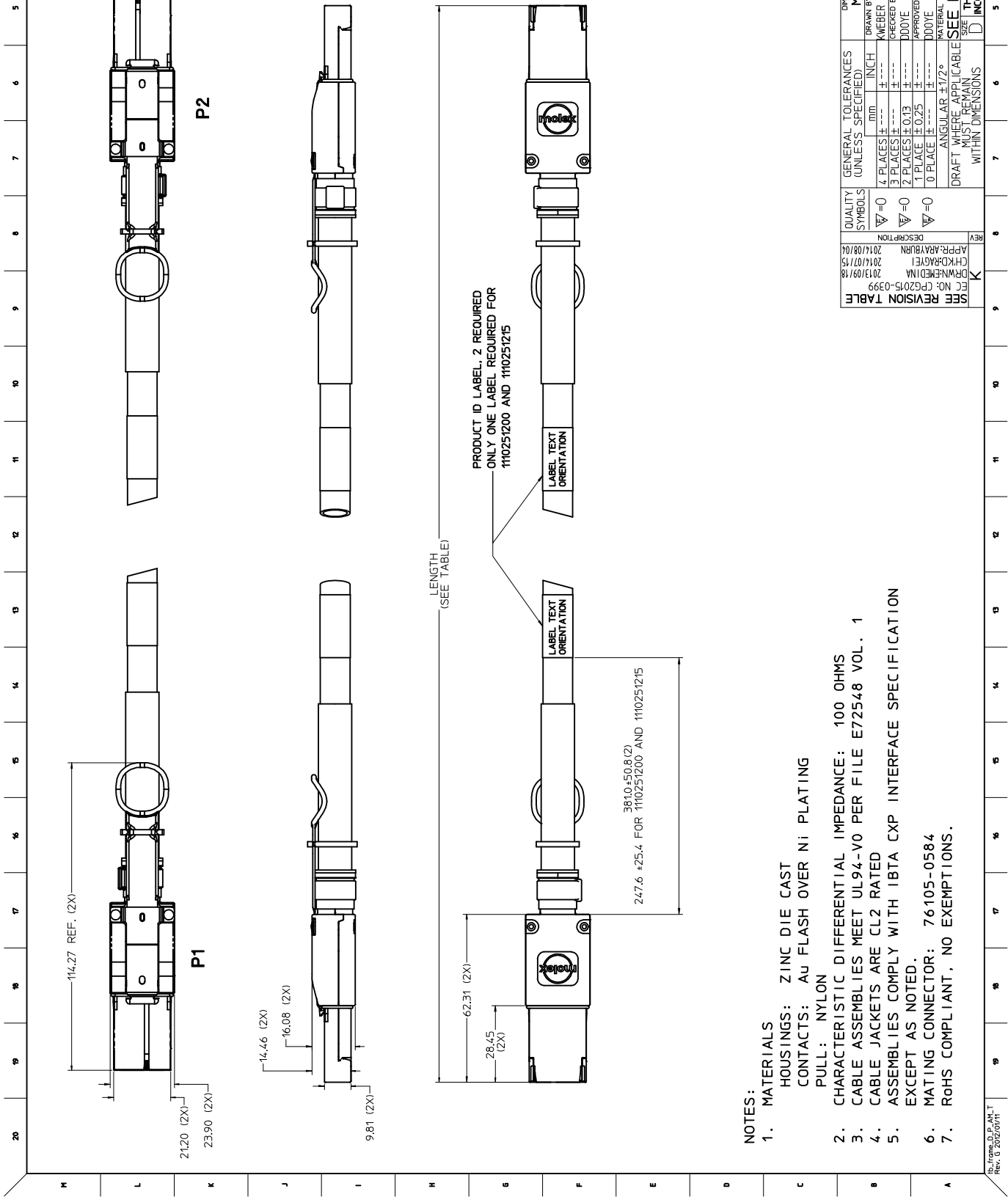




THE DATASHEET OF
1110251205





NOTES:

1. MATERIALS
HOUSINGS: ZINC DIE CAST
CONTACTS: AU FLASH OVER Ni PLATING
PULL: NYLON
2. CHARACTERISTIC DIFFERENTIAL IMPEDANCE: 100 OHMS
3. CABLE ASSEMBLIES MEET UL94-V0 PER FILE E72548 VOL. 1
4. CABLE JACKETS ARE CL2 RATED
5. ASSEMBLIES COMPLY WITH IBTA CXP INTERFACE SPECIFICATION EXCEPT AS NOTED.
6. MATING CONNECTOR: 76105-0584
7. RGHS COMPLIANT, NO EXEMPTIONS.

REV	DESCRIPTION	QUALITY SYMBOLS	GENERAL TOLERANCES UNLESS SPECIFIED:	DRAWN BY
1	APPROVED	0-0	1 PLACES ± .010 INCH	MEMBER
2	APPROVED	0-0	2 PLACES ± .013 INCH	CHECKED
3	APPROVED	0-0	1 PLACE ± 0.25 INCH	DOONE
4	APPROVED	0-0	0 PLACE ± .010 INCH	DOONE
5	APPROVED	0-0	ANGULAR ± 1/2°	MATERIAL
6	APPROVED	0-0	DRAFT WHERE APPLICABLE	SEE
7	APPROVED	0-0	MUS REMAIN WITHIN DIMENSIONS	IT
8	APPROVED	0-0		D
9	APPROVED	0-0		INC

REC NO: PG2015-0399
 DRWNGEN: NA
 2013/09/18
 CH: RDRAGE1
 2014/07/15
 APP: ARAYBURN
 2014/08/04

WIRING CHART

P1				P2				P1				P2			
PIN	F	SIGNAL	TYPE	PIN	F	SIGNAL	TYPE	PIN	F	SIGNAL	TYPE	PIN	F	SIGNAL	TYPE
A1	L	GND	C	C1	L	GND	C	A1	L	GND	C	A1	L	GND	C
A2	S	Tx1p	----->	C2	S	Rx1p	----->	A2	S	Rx1p	----->	A2	S	Tx1p	----->
A3	S	Tx1n	----->	C3	S	Rx1n	----->	A3	S	Rx1n	----->	A3	S	Tx1n	----->
A4	L	GND	C	C4	L	GND	C	A4	L	GND	C	A4	L	GND	C
A5	S	Tx3p	----->	C5	S	Rx3p	----->	A5	S	Rx3p	----->	A5	S	Tx3p	----->
A6	S	Tx3n	----->	C6	S	Rx3n	----->	A6	S	Rx3n	----->	A6	S	Tx3n	----->
A7	L	GND	C	C7	L	GND	C	A7	L	GND	C	A7	L	GND	C
A8	S	Tx5p	----->	C8	S	Rx5p	----->	A8	S	Rx5p	----->	A8	S	Tx5p	----->
A9	S	Tx5n	----->	C9	S	Rx5n	----->	A9	S	Rx5n	----->	A9	S	Tx5n	----->
A10	L	GND	C	C10	L	GND	C	A10	L	GND	C	A10	L	GND	C
A11	S	Tx7p	----->	C11	S	Rx7p	----->	A11	S	Rx7p	----->	A11	S	Tx7p	----->
A12	S	Tx7n	----->	C12	S	Rx7n	----->	A12	S	Rx7n	----->	A12	S	Tx7n	----->
A13	L	GND	C	C13	L	GND	C	A13	L	GND	C	A13	L	GND	C
A14	S	Tx9p	----->	C14	S	Rx9p	----->	A14	S	Rx9p	----->	A14	S	Tx9p	----->
A15	S	Tx9n	----->	C15	S	Rx9n	----->	A15	S	Rx9n	----->	A15	S	Tx9n	----->
A16	L	GND	C	C16	L	GND	C	A16	L	GND	C	A16	L	GND	C
A17	S	Tx11p	----->	C17	S	Rx11p	----->	A17	S	Rx11p	----->	A17	S	Tx11p	----->
A18	S	Tx11n	----->	C18	S	Rx11n	----->	A18	S	Rx11n	----->	A18	S	Tx11n	----->
A19	L	GND	C	C19	L	GND	C	A19	L	GND	C	A19	L	GND	C
A20	S	SCL	█	C20	S	PRSENT	█	A20	S	SCL	█	A20	S	SCL	█
A21	S	SDA	█	C21	S	Int_L/Reset_L	█	A21	S	SDA	█	A21	S	SDA	█
B1	L	GND	C	C1	L	GND	C	B1	L	GND	C	B1	L	GND	C
B2	S	Tx0p	----->	D2	S	Rx0p	----->	B2	S	Tx0p	----->	B2	S	Tx0p	----->
B3	S	Tx0n	----->	D3	S	Rx0n	----->	B3	S	Tx0n	----->	B3	S	Tx0n	----->
B4	L	GND	C	C4	L	GND	C	B4	L	GND	C	B4	L	GND	C
B5	S	Tx2p	----->	D5	S	Rx2p	----->	B5	S	Tx2p	----->	B5	S	Tx2p	----->
B6	S	Tx2n	----->	D6	S	Rx2n	----->	B6	S	Tx2n	----->	B6	S	Tx2n	----->
B7	L	GND	C	C7	L	GND	C	B7	L	GND	C	B7	L	GND	C
B8	S	Tx4p	----->	D8	S	Rx4p	----->	B8	S	Tx4p	----->	B8	S	Tx4p	----->
B9	S	Tx4n	----->	D9	S	Rx4n	----->	B9	S	Tx4n	----->	B9	S	Tx4n	----->
B10	L	GND	C	C10	L	GND	C	B10	L	GND	C	B10	L	GND	C
B11	S	Tx6p	----->	D11	S	Rx6p	----->	B11	S	Tx6p	----->	B11	S	Tx6p	----->
B12	S	Tx6n	----->	D12	S	Rx6n	----->	B12	S	Tx6n	----->	B12	S	Tx6n	----->
B13	L	GND	C	C13	L	GND	C	B13	L	GND	C	B13	L	GND	C
B14	S	Tx8p	----->	D14	S	Rx8p	----->	B14	S	Tx8p	----->	B14	S	Tx8p	----->
B15	S	Tx8n	----->	D15	S	Rx8n	----->	B15	S	Tx8n	----->	B15	S	Tx8n	----->
B16	L	GND	C	C16	L	GND	C	B16	L	GND	C	B16	L	GND	C
B17	S	Tx10p	----->	D17	S	Rx10p	----->	B17	S	Tx10p	----->	B17	S	Tx10p	----->
B18	S	Tx10n	----->	D18	S	Rx10n	----->	B18	S	Tx10n	----->	B18	S	Tx10n	----->
B19	L	GND	C	C19	L	GND	C	B19	L	GND	C	B19	L	GND	C
B20	M	VCC3_3-Tx	█	D20	M	VCC3_3-Rx	█	B20	M	VCC3_3-Tx	█	B20	M	VCC3_3-Tx	█
B21	M	VCC12-Tx	█	D21	M	VCC12-Rx	█	B21	M	VCC12-Tx	█	B21	M	VCC12-Tx	█

FINGER CONTACT MATING (F):

- L = FIRST MATE (LONG FINGERS)
- M = SECOND MATE (MIDDLE FINGERS)
- S = LAST MATE (SHORT FINGERS)

CONNECTION TYPE:

- C = COMMON GROUND
- > = TRANSMIT TO RECEIVE ON HIGH SPEED PAIRS
- █ = CONNECTION TO A CIRCUIT ON THE PADDLE CARD

QUALITY SYMBOLS	DESCRIPTION	REV
△=0	2014/08/04	K
△=0	2014/07/15	K
△=0	2013/09/18	K

USE REF REVISION TABLE

APPROVED: 2014/08/04
 CHECKED: 2014/07/15
 DRAWN BY: 2013/09/18

GENERAL TOLERANCES (UNLESS SPECIFIED):

mm	INCH
±0.15	±0.006
±0.25	±0.010
±0.38	±0.015
±0.50	±0.020
±0.75	±0.030
±1.00	±0.040
±1.50	±0.060
±2.00	±0.080
±3.00	±0.120
±4.00	±0.160
±5.00	±0.200
±6.00	±0.240
±8.00	±0.320
±10.00	±0.400
±15.00	±0.600
±20.00	±0.800
±30.00	±1.200
±40.00	±1.600
±50.00	±2.000
±60.00	±2.400
±80.00	±3.200
±100.00	±4.000
±150.00	±6.000
±200.00	±8.000
±300.00	±12.000
±400.00	±16.000
±500.00	±20.000
±600.00	±24.000
±800.00	±32.000
±1000.00	±40.000

ANGULAR ±1/2°
 DRAFT 1 WHERE APPLICABLE
 DIMENSIONS SHALL REMAIN WITHIN DIMENSIONS

SEE DRAWING FOR DIMENSIONS

APPROVED: 2014/08/04

CHECKED: 2014/07/15

DRAWN BY: 2013/09/18

QUALITY SYMBOLS

DESCRIPTION

REV

△=0

△=0

△=0

2014/08/04

2014/07/15

2013/09/18

USE REF REVISION TABLE

APPROVED: 2014/08/04

CHECKED: 2014/07/15

DRAWN BY: 2013/09/18

QUALITY SYMBOLS

DESCRIPTION

REV

△=0

△=0

△=0

2014/08/04

2014/07/15

2013/09/18

USE REF REVISION TABLE

APPROVED: 2014/08/04

CHECKED: 2014/07/15

DRAWN BY: 2013/09/18

QUALITY SYMBOLS

DESCRIPTION

REV

△=0

△=0

△=0

2014/08/04

2014/07/15

2013/09/18

USE REF REVISION TABLE

APPROVED: 2014/08/04

CHECKED: 2014/07/15

DRAWN BY: 2013/09/18

QUALITY SYMBOLS

DESCRIPTION

REV

△=0

△=0

△=0

2014/08/04

2014/07/15

2013/09/18

USE REF REVISION TABLE

APPROVED: 2014/08/04

CHECKED: 2014/07/15

DRAWN BY: 2013/09/18

QUALITY SYMBOLS

DESCRIPTION

REV

△=0

△=0

△=0

2014/08/04

2014/07/15

2013/09/18

USE REF REVISION TABLE

APPROVED: 2014/08/04

CHECKED: 2014/07/15

DRAWN BY: 2013/09/18

QUALITY SYMBOLS

DESCRIPTION

REV

△=0

△=0

△=0

2014/08/04

2014/07/15

2013/09/18

USE REF REVISION TABLE

APPROVED: 2014/08/04

CHECKED: 2014/07/15

DRAWN BY: 2013/09/18

QUALITY SYMBOLS

DESCRIPTION

REV

△=0

△=0

△=0

2014/08/04

2014/07/15

2013/09/18

USE REF REVISION TABLE

APPROVED: 2014/08/04

CHECKED: 2014/07/15

DRAWN BY: 2013/09/18

QUALITY SYMBOLS

DESCRIPTION

REV

△=0

△=0

△=0

2014/08/04

2014/07/15

2013/09/18

USE REF REVISION TABLE

APPROVED: 2014/08/04

CHECKED: 2014/07/15

DRAWN BY: 2013/09/18

QUALITY SYMBOLS

DESCRIPTION

REV

△=0

△=0

△=0

2014/08/04

2014/07/15

2013/09/18

USE REF REVISION TABLE

APPROVED: 2014/08/04

CHECKED: 2014/07/15

DRAWN BY: 2013/09/18

QUALITY SYMBOLS

DESCRIPTION

REV

△=0

△=0

△=0

2014/08/04

2014/07/15

2013/09/18

Looking for pricing, stock, or lifecycle information?

Click below to explore more details on WIN SOURCE:

 [View 1110251205 on WIN SOURCE](#)

 [Molex, LLC Information](#)

Optimize Your Supply Chain with WIN SOURCE Solutions

-  Global Sourcing Solution
-  Obsolete Management
-  Cost Control Management
-  Shortage Management
-  Alternative Solution
-  Excess Inventory Management