



**THE DATASHEET OF
CS650-12HK-3Y**



NOTES:

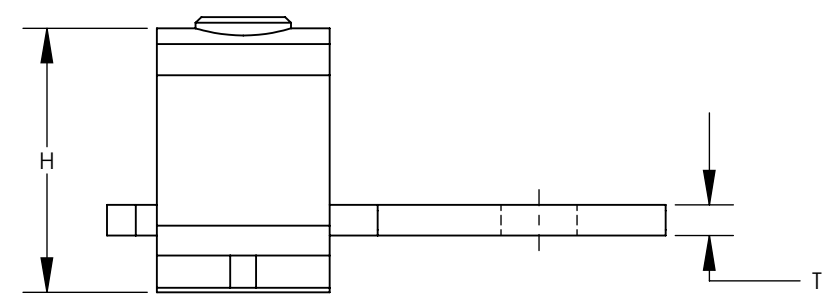
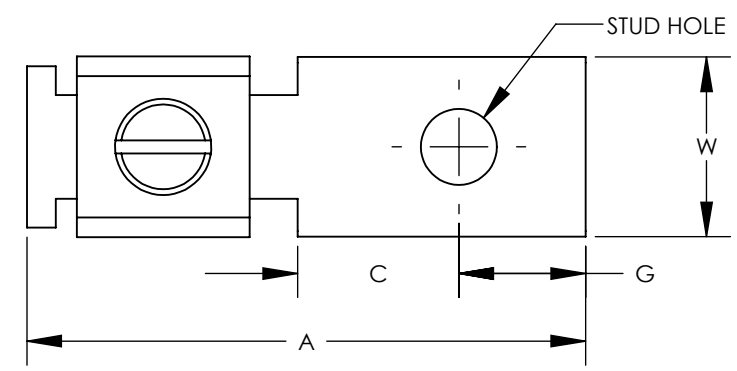
1. MATERIAL:
BODY - COPPER (CS35-36SLT-C COPPER, TIN PLATED)
SCREW - STEEL, ZINC PLATED
2. cULus LISTED FOR USE UP TO 600V & TEMPERATURE RATED 90°C
3. RATED FOR USE WITH COPPER STRANDED CODE CONDUCTOR ONLY
4. THESE PARTS ARE RoHS COMPLIANT
5. SEE PACKAGING LABEL FOR TIGHTENING TORQUE INFORMATION
6. PKG QTY:
C = 100
Q = 25
3 = 3



*CSA70-14-CY ONLY



*CSA70-14-CY ONLY



PANDUIT PART NUMBER	WIRE RANGE COPPER	CURRENT RATING (AMPS)	STUD SIZE IN	DIMENSIONS IN [mm] ± .02 [0.5]						HEX SIZE*
				A	W	G	C	T	H	
CS25-18SL-CY	#14-#10	25	1/8	1.16 [29.5]	.31 [8.0]	.19 [4.8]	.56 [14.2]	.07 [1.8]	.36 [9.1]	SLOTTED
CS35-36SL-CY	#14-#6 (1) #10 & (1) #12 (1) #12 & (1) #14	50	3/16	1.14 [29.0]	.38 [9.7]	.22 [5.6]	.38 [9.7]	.07 [1.8]	.49 [12.4]	SLOTTED
CS35-36SLT-CY	(2) #10 (2) #12 (2) #14			1.14 [29.0]	.38 [9.7]	.22 [5.6]	.38 [9.7]	.07 [1.8]	.49 [12.4]	SLOTTED
CSA70-14-CY	#14-#4	70	1/4	1.30 [33.0]	.50 [12.7]	.27 [6.9]	.44 [11.2] MAX	.08 [2.1]	.56 [14.2]	SLOTTED
CS70-14SL-CY	#8-#2 (1) #8 & (1) #4 (1) #8 & (1) #6	90	1/4	1.30 [33.0]	.50 [12.7]	.27 [6.9]	.44 [11.2]	.08 [2.1]	.64 [16.3]	SLOTTED
CS125-14SL-QY	#2-#1/0	125	1/4	1.94 [49.3]	.62 [15.9]	.44 [11.2]	.56 [14.2]	.11 [2.7]	.92 [23.3]	SLOTTED
CS175-38HK-QY	#4-#3/0	175	3/8	2.19 [55.6]	.75 [19.0]	.44 [11.2]	.81 [20.6]	.16 [4.0]	1.04 [26.4]	3/16
CS225-56HKR-Q	#2-#4/0	225	5/16	2.38 [60.5]	.99 [25.2]	.50 [12.7]	.69 [17.5]	.13 [3.3]	1.16 [29.6]	7/32
CS300-38HK-QY	#1-350	300	3/8	3.19 [81.0]	.99 [25.2]	.50 [12.7]	1.13 [28.7]	.12 [3.1]	1.39 [35.3]	5/16
CS400-38HK-3Y	#1/0-500	400	3/8	3.88 [98.6]	1.50 [38.0]	.94 [23.9]	1.25 [31.8]	.18 [4.5]	1.61 [40.9]	5/16
CS650-12HK-3Y	600-1000	650	1/2	5.13 [130.3]	2.00 [50.8]	1.19 [30.2]	1.63 [41.4]	.25 [6.4]	2.32 [58.9]	3/8

*HEX STYLE & SIZE MAY DIFFER FROM CHART. DIFFERENCE IN SIZE WILL NOT AFFECT FIT, FORM, OR FUNCTION OF PART

REV	DATE	BY	CHK	APR	DESCRIPTION	ECN
12	7/17	JHNU	JHNU	RGB	REVISED PART NUMBER: CSA70-14-CY WAS CSA70-14SL-CY REVISED PART NUMBER: CS70-14SL-CY WAS CA70-14SL-CY REVISED DIMENSIONS FOR CSA70-14-CY	N41665BB-C41665
11	6/17	JHNU	JHNU	RGB	REVISED DIMENSION T FOR CS225-56HKR-Q: .13 WAS .12	N41665BB-C41665
10	4/17	JHNU	JHNU	RGB	REVISED DIMENSION H FOR CS125-14SL-QY: .92 WAS .88 REVISED DIMENSION H FOR CS175-38HK-QY: 1.04 WAS 1.01	N41665BB-C41665
09	3/17	JHNU	JHNU	RGB	REVISED DIMENSION H FOR CS225-56HKR-Q: 1.16 WAS 1.13	N41665BB-C41665
08	8/16	JHNU	JHNU	RGB	ADDED CS225-56HKR-Q, REMOVED CS225-56HK-QY	N41665BB-C41665
07	4/14	JHNU	JHNU	RGB	ADDED H (HEIGHT) DIMENSION TO TABLE	N41665BB-C41665
06	4/13	JHNU	JHNU	RGB	REVISED WIRE RANGE FOR CS225-56HK-QY: 2-4/0 WAS 6-4/0 REVISED WIRE RANGE FOR CS70-14SL-QY: 8-2 WAS 12-2	N41665BB-C41665
05	4/13	JHNU	JHNU	RGB	REVISED PART NUMBER: CS35-36SLT-CY WAS CS35-36SLT-C CS650-12HK-3Y WAS CS650-12-CY	N41665BB-C41665

TITLE CS SERIES COPPER MECHANICAL CONNECTORS CUSTOMER DRAWING			
ITEM REVISION NAME	N41665BB-C41665/12		
DATASET FILE NAME	C41665/12.SLDDRW		
UNLESS OTHERWISE SPECIFIED, DIMENSIONAL TOLERANCES ARE: IN [mm]			
.X ±	.XXX ±		
.XX ±	ANGLES ±		
THIRD ANGLE PROJECTION			DRAWING NUMBER C41665
DRAWN BY JHNU	DATE 2/06	CHK LEM	SCALE NONE
SHEET 1 OF 1			SIZE B



Looking for pricing, stock, or lifecycle information?

Click below to explore more details on WIN SOURCE:

 [View CS650-12HK-3Y on WIN SOURCE](#)

 [Panduit Corp](#) Information

Optimize Your Supply Chain with WIN SOURCE Solutions

-  Global Sourcing Solution
-  Obsolete Management
-  Cost Control Management
-  Shortage Management
-  Alternative Solution
-  Excess Inventory Management