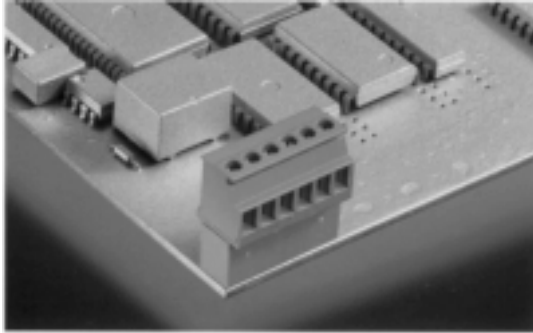




# THE DATASHEET OF EDSTL950/5



# EDZ1710/X



2-20 poles, Spacing 3.81 mm  
insert required no. of poles **x**  
How to order see page 5



**Ratings:**

Rated Voltage	300 V	160 V
Rated Current	8 A	9 A (T60)
Wire Size	AWG 28-16	1.5 mm <sup>2</sup>
Test Voltage		4 kV/3
Rated Torque/ScrewSize		0.4 Nm/M2

**Max. Rated Cross Section**

Single Wire (solid)	1.5 mm <sup>2</sup>
Stranded Wire (flexible)	1.0 mm <sup>2</sup>
Stranded wire with Ferrules	1.0 mm <sup>2</sup>

**Dimensions**

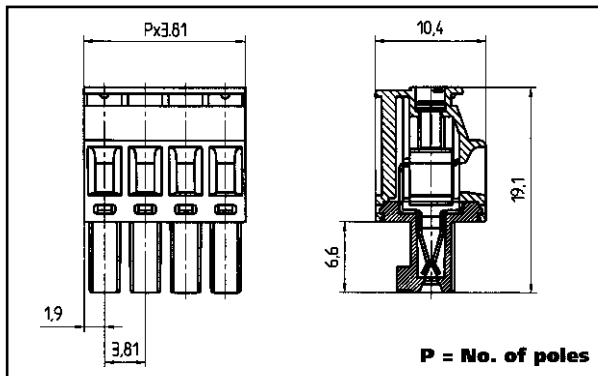
Spacing	3.81 mm
Stripped Length	7.0 mm

**Materials**

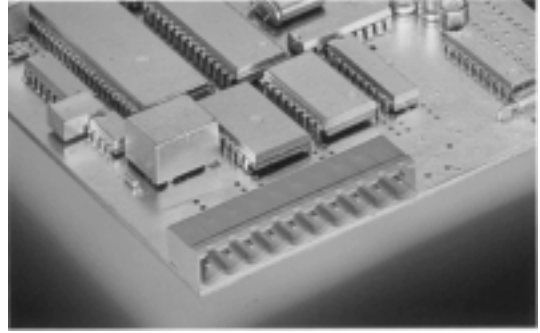
Insulating Material	PA
Flammability Class	UL94 V-0
Temperature Range	-30°C/+105°C
Terminal Block	CuZn
Contact	CuSn

**Color**

Green



# EDSTL950/X (5.0 mm) EDSTLZ950/X (5.08 mm)



2-24 poles, Spacing 5.0 mm or 5.08 mm  
insert required no. of poles **x**  
How to order see page 5



**Ratings:**

Rated Voltage	300 V	250 V
Rated Current	15 A	12 A (T60)
Rating Impulse Voltage/Dirt Level		4 kV/3

**Dimensions**

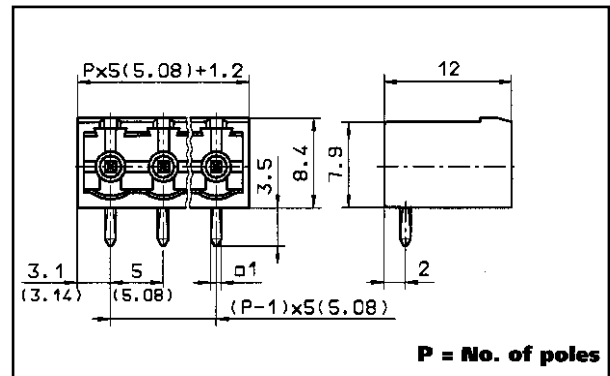
Spacing	5.0 mm (5.08 mm)
PCB Hole Diameter	1.4 mm

**Materials**

Insulating Material	PA/PBTP
Flammability Class	UL94 V-0
Temperature Range	-30°C/+105°C
Contact Pin	Cu



**Color**

Green



## Looking for pricing, stock, or lifecycle information?

Click below to explore more details on WIN SOURCE:

-  [View EDSTL950/5 on WIN SOURCE](#)
-  [On Shore Technology Inc. Information](#)

## Optimize Your Supply Chain with WIN SOURCE Solutions

-  Global Sourcing Solution
-  Obsolete Management
-  Cost Control Management
-  Shortage Management
-  Alternative Solution
-  Excess Inventory Management