



THE DATASHEET OF FIT80-5



FIT80-5

Description:

The FIT80-5 toroidal inductor is specifically designed to minimize transients. It stores energy and therefore, conditions the output signal by leveling the current waveform providing a more stable current supply. Generally used in high frequency circuits, its standard design provides an economical solution in differential mode applications or as an output inductor.

Electrical Specifications (@25C):

Min. Inductance (μ H)		Rated	Max
No Bias	At Bias	DC Amps	DCR (m Ω)
47.70	22.79	8.1	22.5

Note: No Bias inductance measured at .25V, 10KHZ.

Dimensions:

A	B	C	D	E	F	G
.975	.625	1.10	.450	.624	.125	.040 \pm .003

Units: In inches

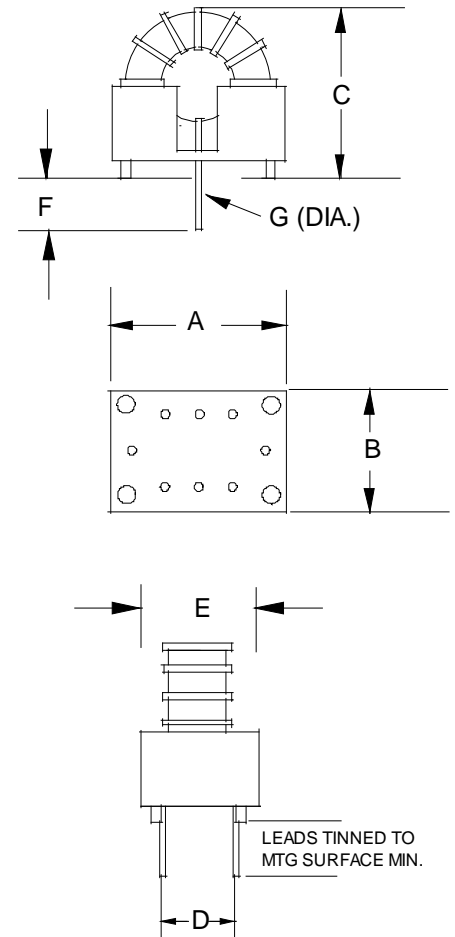
Weight: .045 lbs.

Technical Notes:

1. Nominal inductance values are typically 10% higher than minimal rating.
2. Biased inductance measured at rated DC amps.
3. Operation at rated current yields approximately 40°C temperature rise over 20°C ambient.



RoHS Compliance: As of manufacturing date February 2005, all standard products meet the requirements of 2011/65/EU, known as the RoHS initiative.

*Upon printing, this document is considered "uncontrolled". Please contact Triad Magnetics website for the most current version. For soldering and washing information please see <http://www.triadmagnetics.com/faq.html>.



Looking for pricing, stock, or lifecycle information?

Click below to explore more details on WIN SOURCE:

-  [View FIT80-5 on WIN SOURCE](#)
-  [Triad Magnetics Information](#)

Optimize Your Supply Chain with WIN SOURCE Solutions

-  Global Sourcing Solution
-  Obsolete Management
-  Cost Control Management
-  Shortage Management
-  Alternative Solution
-  Excess Inventory Management