

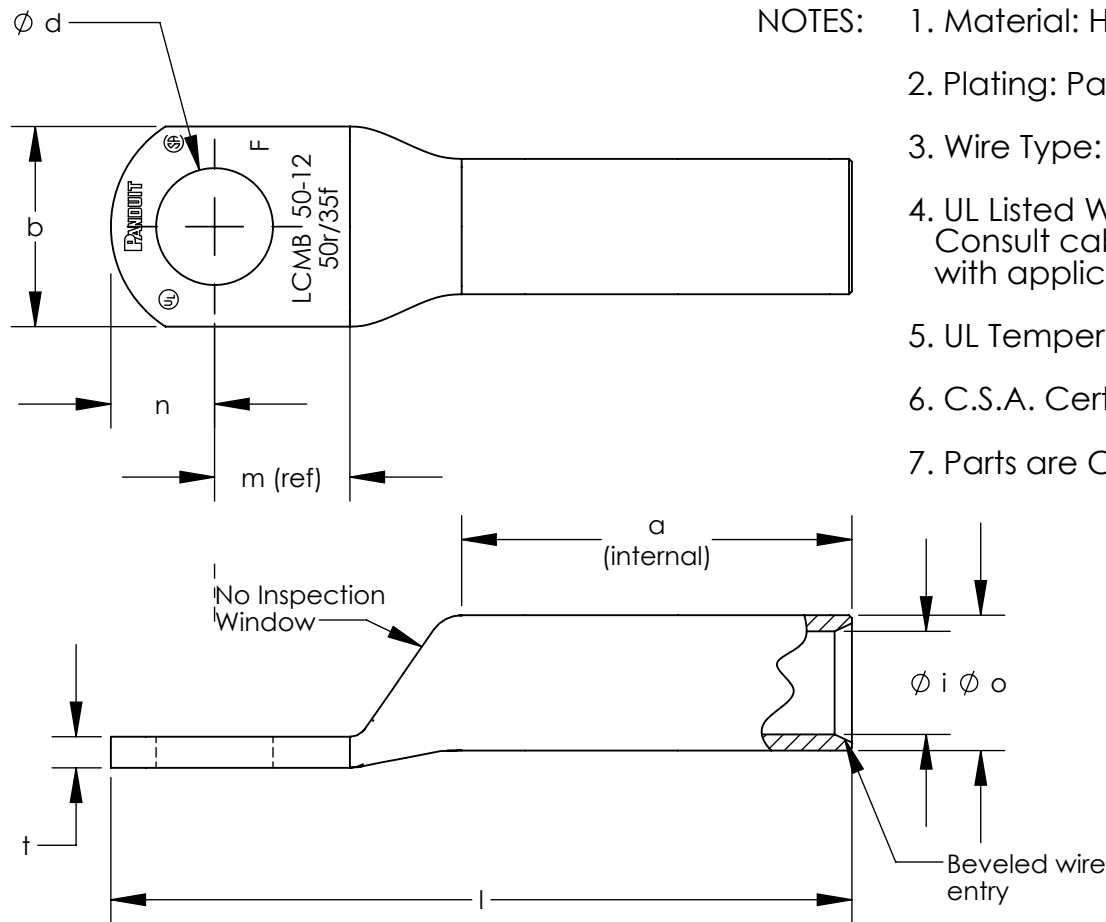


**THE DATASHEET OF
LCMB95-16-X**



ALL DIMENSIONS ARE IN mm																	
Part Number	Class 2r Wire Size	Class 5f & 6f Wire Size	Stud Size	Wire Strip Length	Panduit Die Index No. For Class 2r Wire Circumferential Dies	Panduit Die Index No. For Class 5f & 6f Wire Circumferential Dies	Panduit Die Index No. For Class 5f & 6f Wire Nest/Indentor Dies	i ±2.76	o ±.50	i ±.50	a ±2.25	m (ref)	n ±2.25	d ±.50	b ±2.25	t	
LCMB35-6-Q	35mm ²	25mm ²	M6	34.4	P29	P29	----	57.3	10.40	8.20	32.8	12.3	8.5	6.60	15.5	2.05 ± .40	
LCMB35-8-Q	35mm ²	25mm ²	M8	34.4	P29	P29	----	57.3	10.40	8.20	32.8	12.3	8.5	9.00	15.5	2.05 ± .40	
LCMB35-10-Q	35mm ²	25mm ²	M10	34.4	P29	P29	----	57.3	10.40	8.20	32.8	12.3	8.5	11.00	15.5	2.05 ± .40	
LCMB35-12-Q	35mm ²	25mm ²	M12	34.4	P29	P29	----	63.3	10.40	8.20	32.8	14.5	11.5	14.00	21.5	1.50 ± .40	
LCMB50-6-E	50mm ²	35mm ²	M6	38.2	P37	P33	----	62.8	12.30	9.80	36.6	11.5	10.0	6.60	18.0	2.50 ± .40	
LCMB50-8-E	50mm ²	35mm ²	M8	38.2	P37	P33	----	62.8	12.30	9.80	36.6	11.5	10.0	9.00	18.0	2.50 ± .40	
LCMB50-10-E	50mm ²	35mm ²	M10	38.2	P37	P33	----	62.8	12.30	9.80	36.6	11.5	10.0	11.00	18.0	2.50 ± .40	
LCMB50-12-E	50mm ²	35mm ²	M12	38.2	P37	P33	----	66.3	12.30	9.80	36.6	14.0	11.0	14.00	23.0	1.80 ± .40	
LCMB70-8-X	70mm ²	50mm ²	M8	39.6	P45	P37	----	68.2	14.20	11.50	38.0	14.5	11.5	9.00	20.8	2.85 ± .40	
LCMB70-10-X	70mm ²	50mm ²	M10	39.6	P45	P37	----	68.2	14.20	11.50	38.0	14.5	11.5	11.00	20.8	2.85 ± .40	
LCMB70-12-X	70mm ²	50mm ²	M12	39.6	P45	P37	----	68.2	14.20	11.50	38.0	14.5	11.5	14.00	20.8	2.80 ± .40	
*LCMB95-6-X	95mm ²	70mm ²	M6	44.6	P54	P45	P62/4	79.0	16.50	13.50	43.0	15.0	13.5	6.60	24.5	3.05 ± .40	
LCMB95-8-X	95mm ²	70mm ²	M8	44.6	P54	P45	P62/4	79.0	16.50	13.50	43.0	15.0	13.5	9.00	24.5	3.05 ± .40	
LCMB95-10-X	95mm ²	70mm ²	M10	44.6	P54	P45	P62/4	79.0	16.50	13.50	43.0	15.0	13.5	11.00	24.5	3.05 ± .40	
LCMB95-12-X	95mm ²	70mm ²	M12	44.6	P54	P45	P62/4	79.0	16.50	13.50	43.0	15.0	13.5	14.00	24.5	3.00 ± .40	
LCMB95-16-X	95mm ²	70mm ²	M16	44.6	P54	P45	P62/4	79.0	16.50	13.50	43.0	15.0	13.5	18.00	24.5	2.90 ± .40	
LCMB120-8-X	120mm ²	95mm ²	M8	41.3	P62	P50	P76/4	80.2	18.60	15.20	39.7	15.5	14.5	9.00	27.5	3.50 ± .45	
LCMB120-10-X	120mm ²	95mm ²	M10	41.3	P62	P50	P76/4	80.2	18.60	15.20	39.7	15.5	14.5	11.00	27.5	3.50 ± .45	
LCMB120-12-X	120mm ²	95mm ²	M12	41.3	P62	P50	P76/4	80.2	18.60	15.20	39.7	15.5	14.5	14.00	27.5	3.50 ± .45	
LCMB120-16-X	120mm ²	95mm ²	M16	41.3	P62	P50	P76/4	80.2	18.60	15.20	39.7	15.5	14.5	18.00	27.5	3.40 ± .45	
LCMB150-8-X	150mm ²	120mm ²	M8	58.6	P66	----	P76/4	100.0	21.00	16.50	57.0	18.0	16.5	9.00	30.5	4.45 ± .45	
LCMB150-10-X	150mm ²	120mm ²	M10	58.6	P66	----	P76/4	100.0	21.00	16.50	57.0	18.0	16.5	11.00	30.5	4.45 ± .45	
LCMB150-12-X	150mm ²	120mm ²	M12	58.6	P66	----	P76/4	100.0	21.00	16.50	57.0	18.0	16.5	14.00	30.5	4.45 ± .45	
LCMB150-16-X	150mm ²	120mm ²	M16	58.6	P66	----	P76/4	100.0	21.00	16.50	57.0	18.0	16.5	18.00	30.5	4.30 ± .45	
LCMB150-20-X	150mm ²	120mm ²	M20	58.6	P66	----	P76/4	103.5	21.00	16.50	57.0	22.0	16.5	22.00	30.5	4.30 ± .45	

* CULUS LISTED WIRE CONNECTOR



- NOTES:
1. Material: High conductivity seamless copper tube.
 2. Plating: Parts are annealed and tin plated.
 3. Wire Type: Class 2r, 5f & 6f Stranded Copper per DIN VDE 0295, IEC 60228 and HD 383.
 4. UL Listed Wire Connector: Yes, for applications up to 35kv. Consult cable manufacturer for voltage stress relief instructions with applications greater than 2000 volts.
 5. UL Temperature Rating: 90° C
 6. C.S.A. Certified Wire Connector: Yes
 7. Parts are CE and tested per EN 61238-1:2003/IEC 61238-1:2003 Class B, with Class 2r wire 35mm² - 150mm².



REV	DATE	BY	CHK	APR	DESCRIPTION	ECN
01	7/15	JHNU	TLCO	RGB	ADDED LCMB95-6-X	12J036BI-JC
00	7/13	JHNU	TLCO	RGB	DRAWING RELEASED	12J036BI-JC

TITLE METRIC LUGS - LCMB ONE HOLE SERIES 35-150mm LONG BARREL CUSTOMER DRAWING	
ITEM REVISION NAME 12J036BI/01	PANDUIT
DATASET FILE NAME 12J036BI-JC/01.SLDDRW	
UNLESS OTHERWISE SPECIFIED, DIMENSIONAL TOLERANCES ARE: IN [mm]	
.X ± .XXX ±	MATERIAL SEE NOTES
.XX ± ANGLES ±	
DRAWING NUMBER 12J036BI-JC	
DRAWN BY JHNU	DATE 7/13
CHK TLCO	SCALE NONE
SHEET 1 OF 1	
SIZE B	

Looking for pricing, stock, or lifecycle information?

Click below to explore more details on WIN SOURCE:

 [View LCMB95-16-X on WIN SOURCE](#)

 [Panduit Corp](#) Information

Optimize Your Supply Chain with WIN SOURCE Solutions

-  Global Sourcing Solution
-  Obsolete Management
-  Cost Control Management
-  Shortage Management
-  Alternative Solution
-  Excess Inventory Management