



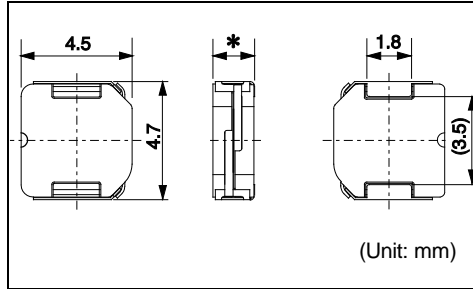
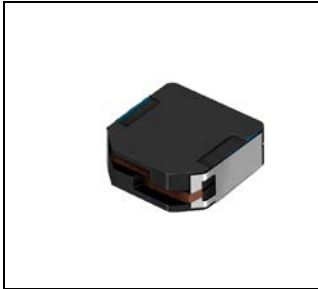
**THE DATASHEET OF
1235AS-H-3R3M=P3**



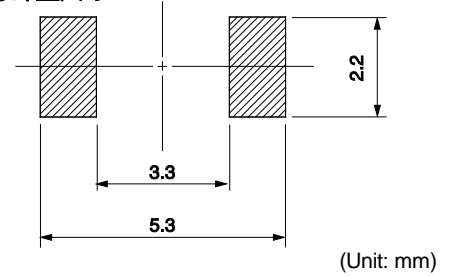
DEM4518C



Inductance Range: 1.2~22μH



Recommended patterns
推荐焊盘尺寸



FEATURES 特点

- Low profile (4.5×4.7mm square, 1.8mm Max. height).
- Magnetically shielded construction and low DC resistance.
- Ideal for a variety of DC-DC converter inductor applications.
- Operating temperature (−40~+85°C)
- 薄型构造（4.5×4.7毫米的平面，最大高度1.8毫米）
- 磁性屏蔽结构和低直流电阻
- 是多种DC-DC转换器电感器设备的理想选择
- 使用温度范围：−40 ~ +85°C

STANDARD PART NUMBERS 标准零件号码

TYPE DEM4518C (Quantity/reel; 2,000 PCS)

零件号码	电感值 ⁽¹⁾	公差	最大直流电阻 ⁽²⁾ (典型)	最大电感减小电流 ⁽³⁾ (典型)	最大温度上升电流 ⁽³⁾ (典型)
Part Number	Inductance ⁽¹⁾ (μH)	Tolerance (%)	DC Resistance ⁽²⁾ (mΩ) Max. (Typ.)	Inductance Decrease Current ⁽³⁾ (A) Max. (Typ.) $\frac{\Delta L}{L} = 30\%$	Temperature Rise Current ⁽³⁾ $\Delta T = 40^\circ\text{C}$ (A) Max. (Typ.)
1235AS-H-1R2N=P3	1.2	±30	47 (39)	3.50 (4.70)	2.90 (3.40)
1235AS-H-1R8N=P3	1.8	±30	56 (47)	3.00 (3.90)	2.70 (3.20)
1235AS-H-2R4M=P3	2.4	±20	65 (54)	2.60 (3.40)	2.30 (2.70)
1235AS-H-3R3M=P3	3.3	±20	74 (62)	2.30 (3.00)	2.10 (2.50)
1235AS-H-4R3M=P3	4.3	±20	84 (70)	2.00 (2.65)	2.00 (2.40)
1235AS-H-6R8M=P3	6.8	±20	106 (88)	1.70 (2.20)	1.90 (2.20)
1235AS-H-100M=P3	10	±20	132 (110)	1.30 (1.75)	1.70 (2.00)
1235AS-H-150M=P3	15	±20	192 (160)	0.98 (1.30)	1.10 (1.30)
1235AS-H-220M=P3	22	±20	306 (255)	0.91 (1.20)	1.00 (1.20)

- (1) Inductance is measured with a LCR meter 4284A (Agilent Technologies) or equivalent. Test frequency at 100kHz
- (2) DC resistance is measured with 34420A (Agilent Technologies) or 3541(HIOKI). (Reference ambient temperature 25°C)
- (3) Maximum allowable DC current is that which causes a 30% inductance reduction from the initial value, or coil temperature to rise by 40°C, whichever is smaller. (Reference ambient temperature 20°C)

- (1) LCR仪表4284A (Agilent技术)或者功能相同的仪器在100kHz下测试电感值。
- (2) 通过数码万用表34420A (Agilent技术) 或者3541(HIOKI)测试直流电阻。(环境温度为25°C)
- (3) 允许最大直流电的范围是以下两者中比较小的一个: 引起电感值从最初值降低30%, 或者线圈温度升高40°C。(参考周围环境温度20°C)。

Looking for pricing, stock, or lifecycle information?

Click below to explore more details on WIN SOURCE:

- [View 1235AS-H-3R3M=P3 on WIN SOURCE](#)
- [Murata Electronics North America Information](#)

Optimize Your Supply Chain with WIN SOURCE Solutions

- ✓ Global Sourcing Solution
- ✓ Obsolete Management
- ✓ Cost Control Management
- ✓ Shortage Management
- ✓ Alternative Solution
- ✓ Excess Inventory Management