

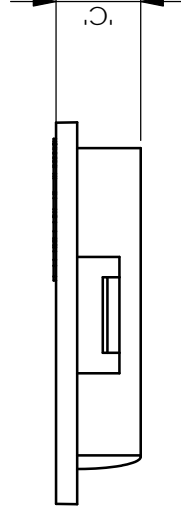
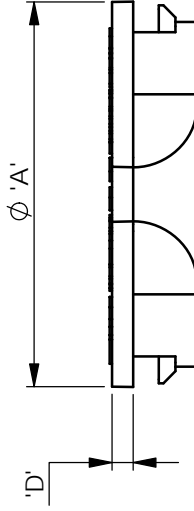
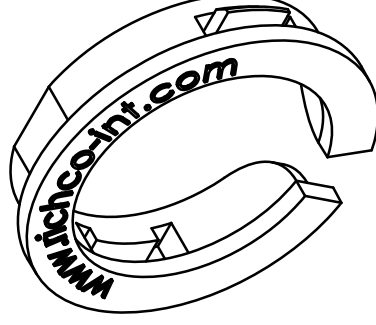
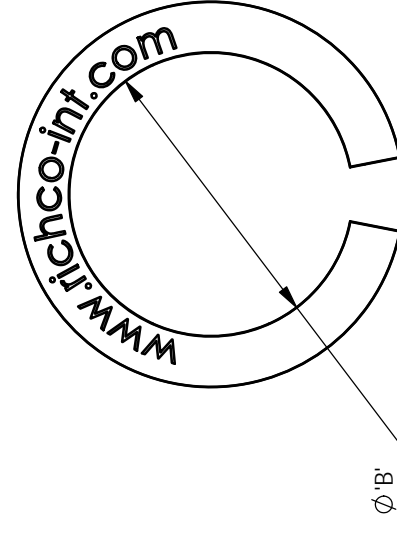


THE DATASHEET OF PGSA-1013A



| PART No | PANEL THICKNESS | PANEL HOLE DIA | 'A' REF | MAX BUNDLE DIA 'B' | 'C' | 'D' |
|-------------|-----------------|----------------|---------|--------------------|-----|-----|
| PGSA-0407A | 0.4-1.0 | 7±0.1 | 10.4 | 4.8 | 5 | 0.7 |
| PGSA-1013A | 1-1.5 | 13±0.1 | 16.2 | 9.2 | 5.3 | 1.1 |
| PGSA-1316A | 1-1.4 | 16±0.1 | 19.4 | 12.2 | 5.4 | |
| PGSA-1519A | 1-1.5 | 19±0.1 | 22.7 | 14.3 | 5.7 | 1.4 |
| PGSA-1822A | 0.8-1.6 | 22±0.1 | 25.5 | 17.6 | 5.6 | 1 |
| PGSA-2024A1 | 0.8-1.2 | 24±0.1 | 27 | 19.5 | 5.3 | |
| PGSA-2024A | 1-1.6 | 27.1±0.1 | 35.1 | 22.9 | 6 | 1.5 |
| PGSA-2327A | 0.4-1.0 | 27.1±0.1 | | 24.5 | 7 | |
| PGSA-2529A | 0.4-1.1 | 29±0.1 | | | | |

PARTS AVAILABLE BY SPECIAL ORDER IN NYLON 6/6 UL94 V-0 (RMS-19). TO ORDER ADD '-V0' TO END OF PART NUMBER.



INFORM
RICHCO
REPRO

RICHCO
WWW.RICHCO-INT.COM

MATERIA

NYLO

DESCRIP

OPEN

DRG No

(

DRN

TC

Looking for pricing, stock, or lifecycle information?

Click below to explore more details on WIN SOURCE:

- ⊖ [View PGSA-1013A on WIN SOURCE](#)
- ⊖ [Essentra Components Information](#)

Optimize Your Supply Chain with WIN SOURCE Solutions

- ✓ Global Sourcing Solution
- ✓ Obsolete Management
- ✓ Cost Control Management
- ✓ Shortage Management
- ✓ Alternative Solution
- ✓ Excess Inventory Management