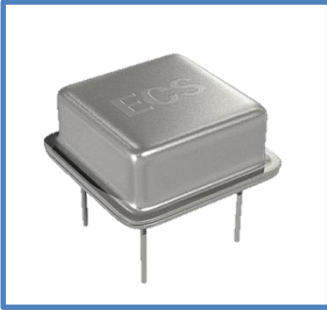


The ECS-2200X Series clock oscillator can drive both HCMOS and TTL logic. This oscillator also features tri-state enable/disable capabilities in an 8 pin DIP package

Request a Sample

OPERATING CONDITIONS / ELECTRICAL CHARACTERISTICS

ECS-2200X



- 50 pF HCMOS/TTL logic
- Tri-State enable/disable
- Wide frequency range
- Resistance weld package
- 3.3V operation (optional)
- PbFree/RoHS Compliant

Parameters	Frequency Range	Conditions	MIN	TYP	MAX	Units
Frequency (F _O)	1.000 ~ 150.000		1.000		150.000	MHz
Operating Temperature Range (T _{OPR})	1.000 ~ 150.000		0		+70	°C
Storage Temperature Range (T _{STG})	1.000 ~ 150.000		-55		+125	°C
Frequency Stability	1.000 ~ 150.000	All Conditions*	-100		+100	PPM
Input Current (I _{DD})	1.000 ~ 25.000			17	25	mA
	25.000 ~ 50.000			33	46	mA
	50.000 ~ 80.000			45	77	mA
	80.000 ~ 150.000			67	82	mA
Output Symmetry	1.000 ~ 80.000	50% V _{DD} level	45	50 ± 3	55	%
	80.000 ~ 150.000	50% V _{DD} level	40	50 ± 3	60	%
Rise Time (T _R)	1.000 ~ 150.000	10% ~ 90% V _{DD} level			5	nS
Fall Time (T _F)	1.000 ~ 150.000	90% ~ 10% V _{DD} level			5	nS
Output Voltage (V _{OL}) (V _{OH})	1.000 ~ 150.000	I _{OL} = 16 mA			0.5	V
	1.000 ~ 150.000	I _{OH} = -16 mA	4.5			V
Output Current (I _{OL}) (I _{OH})	1.000 ~ 150.000	V _{OL} = 0.5V			16	mA
	1.000 ~ 150.000	V _{OH} = 4.5V			-16	mA
Output Load	1.000 ~ 150.000	TTL			10	TTL
	1.000 ~ 80.000	HCMOS			50	pF
	80.000 ~ 150.000	HCMOS			30	pF
Start-Up Time (T _S)	1.000 ~ 150.000	0.0V to 5.0V			10	mS
Supply Voltage			+4.75	+5.0	+5.25	V _{DC}

* Inclusive of 25°C tolerance, operating temperature range, input voltage change, load change, aging, shock and vibration.

Part Numbering Guide: Example ECS-2200AX-100

ECS - Series - Stability - Frequency Abbreviations

ECS

2200
+5V HCMOS/TTL
Half Size w/Tri-
State

AX = ±100 PPM
BX = ±50 PPM
CX = ±25 PPM

100 = 10.000 MHz

Package Dimensions (mm)

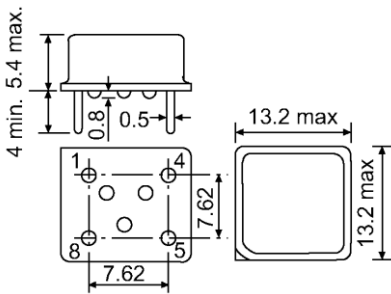


Figure 1) Side, Bottom, and Top views

Pin Connections	
#1	TRI-STATE
#4	CASE GROUND
#5	OUTPUT
#8	+5V DC

Enable/ Disable Function**	
$\overline{\text{INH}}$ (Pin 1)	Output (Pin 5)
Open*	Active
1 Level $V_{IH} \geq 2.2V$ ($V_{IH} \geq 2.0V$ Above 70 MHz)	Active
'O' Level $V_{IL} \leq 0.8V$	High Z

** An internal pullup resistor from pin 1 to pin 8 allows active output if pin 1 is left open.

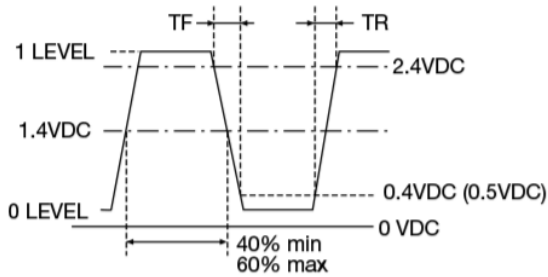


Figure 2) TTL Output Wave Form

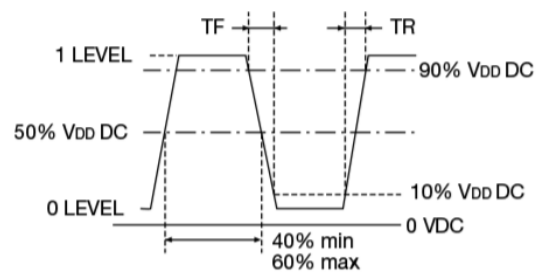


Figure 3) HCMOS Output Wave Form

Looking for pricing, stock, or lifecycle information?

Click below to explore more details on WIN SOURCE:

 [View ECS-2200BX-320 on WIN SOURCE](#)

 [ECS Inc. Information](#)

Optimize Your Supply Chain with WIN SOURCE Solutions

-  Global Sourcing Solution
-  Obsolete Management
-  Cost Control Management
-  Shortage Management
-  Alternative Solution
-  Excess Inventory Management