



**THE DATASHEET OF
CLTS25N-10M**



THIS COPY IS PROVIDED ON A RESTRICTED BASIS AND IS NOT TO BE USED IN ANY WAY DETRIMENTAL TO THE INTERESTS OF PANDUIT CORP.

MATERIAL: NYLON 6

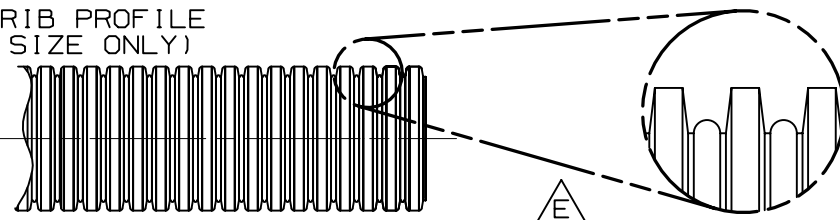
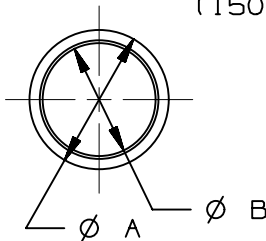
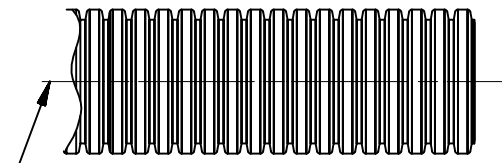
MATERIAL: POLYETHYLENE \triangle

PART NO. \triangle	DIMENSIONS		WALL THICKNESS	WEIGHT lbs / 100 ft (g)
	A	B		
CLT25N-630 *	0.398 (10.10)	0.284 (7.20)	0.007 - 0.020 (0.18 - 0.51)	0.81 (370.0)
CLT35N-630 *	0.504 (12.79)	0.350 (8.88)	0.006 - 0.025 (0.15 - 0.64)	1.28 (580.0)
CLT38N-630 *	0.524 (13.30)	0.394 (9.99)	0.007 - 0.025 (0.18 - 0.64)	1.47 (670.0)
CLT50N-630 *	0.654 (16.60)	0.512 (12.99)	0.007 - 0.020 (0.18 - 0.51)	1.98 (900.0)
CLT62N-630 *	0.847 (21.05)	0.664 (16.85)	0.007 - 0.020 (0.18 - 0.51)	2.39 (1085.0)
CLT75N-630 *	0.941 (23.90)	0.767 (19.47)	0.007 - 0.020 (0.18 - 0.51)	2.75 (1250.0)
CLT100N-630 *	1.103 (28.00)	0.912 (23.15)	0.008 - 0.030 (0.20 - 0.76)	3.70 (1680.0)
CLT125N-630 *	1.536 (39.00)	1.278 (32.45)	0.008 - 0.030 (0.20 - 0.76)	6.03 (2740.0)
CLT150N-630 *	1.851 (47.00)	1.575 (39.99)	0.010 - 0.032 (0.25 - 0.81)	7.39 (3360.0)
CLT188N-630 *	2.194 (55.73)	1.849 (46.96)	0.013 - 0.035 (0.33 - 0.89)	11.20 (5088.0)

PART NO. \triangle	DIMENSIONS		WALL THICKNESS	WEIGHT lbs / 100 ft (g)
	A	B		
CLT25F- *	0.398 (10.10)	0.284 (7.20)	0.007 - 0.020 (0.18 - 0.51)	0.75 (340.0)
CLT35F- *	0.504 (12.79)	0.350 (8.88)	0.006 - 0.025 (0.15 - 0.64)	1.12 (510.0)
CLT38F- *	0.524 (13.30)	0.394 (9.99)	0.007 - 0.025 (0.18 - 0.64)	1.38 (625.0)
CLT50F- *	0.654 (16.60)	0.512 (12.99)	0.007 - 0.020 (0.18 - 0.51)	1.85 (840.0)
CLT62F- *	0.847 (21.05)	0.664 (16.85)	0.007 - 0.020 (0.18 - 0.51)	2.29 (1040.0)
CLT75F- *	0.941 (23.90)	0.767 (19.47)	0.007 - 0.020 (0.18 - 0.51)	2.64 (1200.0)
CLT100F- *	1.103 (28.00)	0.912 (23.15)	0.008 - 0.030 (0.20 - 0.76)	3.52 (1600.0)
CLT125F- *	1.536 (39.00)	1.278 (32.45)	0.008 - 0.030 (0.20 - 0.76)	5.77 (2620.0)
CLT150F- *	1.851 (47.00)	1.575 (39.99)	0.010 - 0.032 (0.25 - 0.81)	6.16 (2800.0)
CLT188F- *	2.194 (55.73)	1.849 (46.96)	0.013 - 0.035 (0.33 - 0.89)	9.10 (4127.3)

STANDARD PROFILE

DUAL RIB PROFILE
(150 SIZE ONLY)



TUBING IS TO BE SLIT
IN ONE PLACE DOWN ITS
ENTIRE LENGTH

\triangle NOTES:

- * 1. SEE www.panduit.com FOR PART NUMBER SUFFIX DESIGNATION FOR PACKAGE SIZE, PART MATERIAL AND PART COLOR.
- 2. FOR ROLL SIZES LARGER THAN 10 FEET, SPLICES MAY OCCUR.

DIMENSIONS IN PARENTHESES ARE IN METRIC UNITS

REV	DATE	BY	CHK	APR	DESCRIPTION	ECN
10	02.10.15	BDK	VJS	RGR0	E. ADDED DUAL RIB PROFILE AND DETAIL F. REMOVED DENSITY FROM POLYETHYLENE	GB0222BP
09	5/09/14	BWG	VJS	JADE	\triangle REVISED DIMENSIONS AND WEIGHTS, REMOVED PREVIOUS REVISION BALLONS FOR CLARITY AND UPDATED TITLE BORDER, ADDED * TO PART NUMBERS, REVISED NOTE 1.	GB0222BP/09

TITLE CLT()N, CLT()F SLIT CORRUGATED TUBING				\triangle	
CUSTOMER DRAWING				\triangle	
ITEM REVISION NAME		G03597BN/02			
DATASET FILE NAME		G03597BN_DC_GB0222BP_10/00A			
UNLESS OTHERWISE SPECIFIED, DIMENSIONAL TOLERANCES ARE: IN [mm]				MATERIAL:	
.x ±		.xxx ± 0.050 (1.27)		SEE ABOVE	
.xx ±		ANGLES ±		DRAWING NUMBER:	
		THIRD ANGLE PROJECTION		GB0222BP	
DRAWN BY	DATE	CHK	SCALE	SHT 1 OF 1	
CPE	9-18-97	VJS	NONE	A	

Looking for pricing, stock, or lifecycle information?

Click below to explore more details on WIN SOURCE:

 [View CLTS25N-10M on WIN SOURCE](#)

 [Panduit Corp Information](#)

Optimize Your Supply Chain with WIN SOURCE Solutions

-  Global Sourcing Solution
-  Obsolete Management
-  Cost Control Management
-  Shortage Management
-  Alternative Solution
-  Excess Inventory Management