

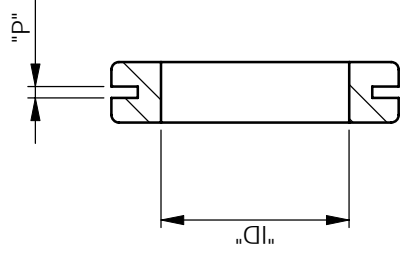


THE DATASHEET OF HG-10

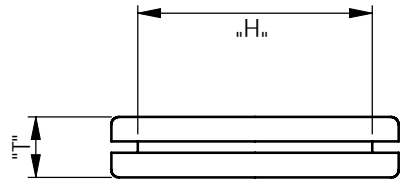
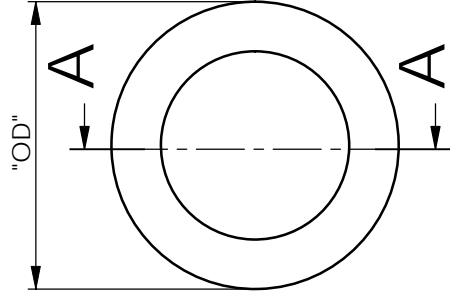


PART NUMBER	"ID"	"H"	"P"	"OD"	"T"
HG-2	3.2 [.126]	4.8 [.190]	1.6 [.063]	8.0 [.315]	6.4 [.252]
HG-2.5	4.0 [.148]	6.4 [.252]	1.6 [.063]	9.5 [.374]	6.3 [.248]
HG-3	4.8 [.188]	7.7 [.305]	0.8 [.032]	10.9 [.430]	4.8 [.188]
HG-3.5	5.5 [.217]	8.0 [.315]	1.6 [.063]	10.9 [.430]	5.5 [.217]
HG-4	6.4 [.252]	9.5 [.374]	2.4 [.095]	14.2 [.559]	7.0 [.276]
HG-5	8.0 [.313]	10.9 [.430]	1.6 [.063]	14.3 [.562]	4.8 [.188]
HG-6	9.5 [.374]	12.5 [.492]	1.6 [.063]	17.0 [.669]	7.0 [.276]
HG-8	12.6 [.495]	16.8 [.660]	1.6 [.063]	21.5 [.846]	6.4 [.250]
HG-9	14.2 [.558]	17.1 [.675]	1.6 [.063]	22.2 [.875]	4.8 [.188]
HG-10	15.5 [.610]	18.8 [.742]	1.6 [.063]	22.2 [.875]	5.6 [.219]
HG-11	17.1 [.672]	18.7 [.735]	1.6 [.063]	23.7 [.933]	4.8 [.188]
HG-12	18.6 [.734]	24.8 [.976]	1.6 [.063]	31.3 [1.234]	8.0 [.313]
HG-14	21.8 [.860]	25.1 [.990]	1.6 [.063]	30.2 [1.188]	8.0 [.313]
HG-16	24.6 [.970]	31.5 [1.240]	1.6 [.063]	38.1 [1.500]	8.0 [.313]
HG-17	8.0 [.315]	11.0 [.433]	2.0 [.079]	16.0 [.630]	7.0 [.276]
HG-18	12.7 [.500]	19.0 [.748]	2.4 [.095]	24.0 [.945]	7.1 [.280]

NOTES
 1a) MET
 1b) IMPR
 2) ALL R
 IN RM
 3) PART
 ADD C



SECTION A-A



INFOR RICHG REPRC	
MATERIAL:	
DESCRIPTION:	
DRG No:	
DRN	OW

Looking for pricing, stock, or lifecycle information?

Click below to explore more details on WIN SOURCE:

- [View HG-10 on WIN SOURCE](#)
- [Essentra Components Information](#)

Optimize Your Supply Chain with WIN SOURCE Solutions

- ✓ Global Sourcing Solution
- ✓ Obsolete Management
- ✓ Cost Control Management
- ✓ Shortage Management
- ✓ Alternative Solution
- ✓ Excess Inventory Management