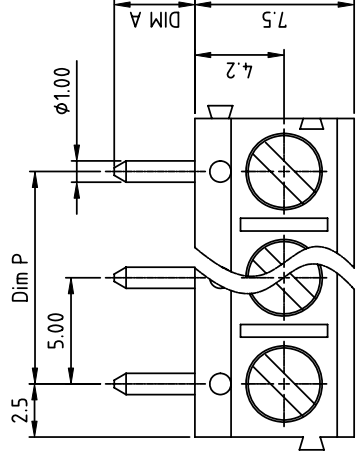




**THE DATASHEET OF  
TD1501610000G**



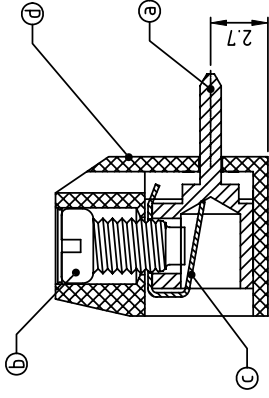
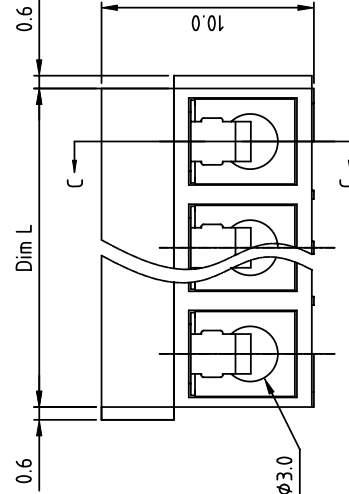
PRODUCT NUMBER	PITCH
TDxx01xx00J0G	5.00 mm



(10.0)

(2.7)

RE



SECTION C-C

- Material**
- Item A
  - Item B
  - Item C
  - Item D
- Electrical**
- Voltage
  - Current
  - Wire rat
  - Solid wir
  - Strande
  - Torque
  - Screw: M
  - Wire str
  - Withstat
  - Operatio
  - Solderin
  - Safety r

**PART NO.: TD xx 01 X X 00J0 G**

**DIMENSION**

Dim L	Nx5.0		
Dim P	(N-1)x5.0		
N=Number of poles			
Poles	DIM P	DIM L	
2p-6p	±0.15	±0.20	
7p-12p	±0.20	±0.25	
13p-18p	±0.25	±0.35	
19p-24p	±0.35	±0.40	

- End stackable 0 Black (RAL9005)
  - No. of poles 02 2 poles 2 Red (RAL3001/D)
  - 03 3 poles 3 Orange(RAL2011/P)
  - ... 4 Yellow(RAL1018/A)
  - 24 24 poles 5 Green(RAL6018/T)
  - 6 Blue (RAL5015/A)
  - 8 Grey(RAL7035/D)
  - 9 White(RAL1102)
  - C Green(RAL6018/U)
- Body Color
  - DIM A Length 0 4,4mm
  - 1 3,8mm
  - 2 3,5mm
- RoHS compliant (lead-4%) in copper Alloy

mat'l. code	surface	tolerances unless oth
itr	ecn no	dr date
	angles	
	X	X
	X	X
	X	X
	dr	EVIN ZHONG
	enr	EVIN ZHONG
	chr	HANKE FEN
	appd	SHI JUN
sheet	revision	A
index	sheet	1

form: A4mmXLc

1

2

PDS: Rev

## Looking for pricing, stock, or lifecycle information?

Click below to explore more details on WIN SOURCE:

- [View TD1501610000G on WIN SOURCE](#)
- [Amphenol Anytek Information](#)

## Optimize Your Supply Chain with WIN SOURCE Solutions

- ✓ Global Sourcing Solution
- ✓ Obsolete Management
- ✓ Cost Control Management
- ✓ Shortage Management
- ✓ Alternative Solution
- ✓ Excess Inventory Management