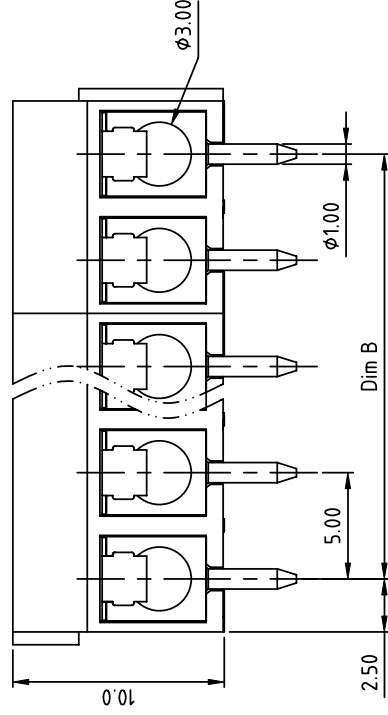
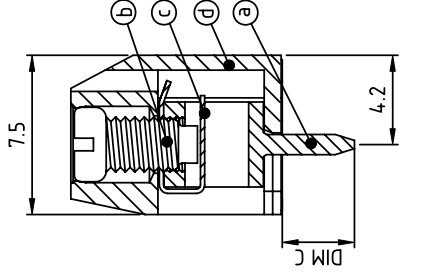
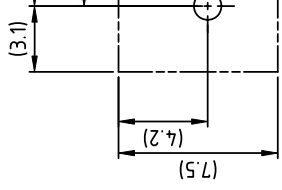
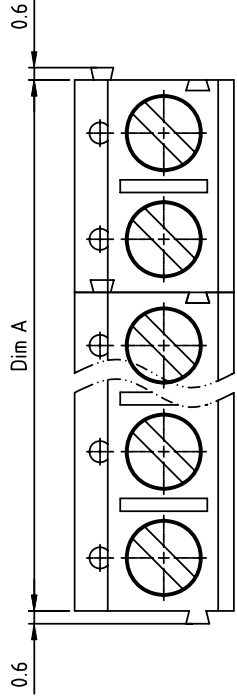




**THE DATASHEET OF
TC1203620000G**



PRODUCT NUMBER	PITCH
TCxx03xx00J0G	5.00 mm



N = Number of poles
 Dim A=Nx5.0
 Dim B=(N-1)x5.0

Poles	Dim A	Dim B
2-6p	±0.15	±0.10
7-12p	±0.20	±0.20
13-18p	±0.30	±0.25
19-24p	±0.40	±0.30

PART NO.: TC XX 03 X X 00J0 G

- End stackable 0 Black (RAL9005)
 - No. of poles 2 Red (RAL3001/D)
 - 02 2 poles 3 Orange(RAL2011/P)
 - 03 3 poles 4 Yellow(RAL1018/A)
 - ... 5 Green(RAL6018/T)
 - 24 24 poles 6 Blue (RAL5015/A)
 - 8 Grey(RAL7035/D)
 - 9 White(RAL1102)
 - C Green(RAL6018/U)
- Body Color
 - 0 Black (RAL9005)
 - 2 Red (RAL3001/D)
 - 3 Orange(RAL2011/P)
 - 4 Yellow(RAL1018/A)
 - 5 Green(RAL6018/T)
 - 6 Blue (RAL5015/A)
 - 8 Grey(RAL7035/D)
 - 9 White(RAL1102)
 - C Green(RAL6018/U)
- DIM C Length RohS compliant (lead=4% in copper Alloy)
 - 0 4.4mm
 - 1 3.8mm
 - 2 3.5mm
 - 3 2.9mm

mat'l. code		it.		surface	
ltr	ecn no	dr	date	ASME	Y14.5
					A
				tolerances unless oth	
				angles	>
				X	
				X±1°	
				dr	EVIN ZHON
				engr	EVIN ZHON
				chr	HANKE FEN
				appd	SHI JUN
sheet	revision	A			
index	sheet	1			

Looking for pricing, stock, or lifecycle information?

Click below to explore more details on WIN SOURCE:

- ⊖ [View TC1203620000G on WIN SOURCE](#)
- ⊖ [Amphenol Anytek Information](#)

Optimize Your Supply Chain with WIN SOURCE Solutions

- ✓ Global Sourcing Solution
- ✓ Obsolete Management
- ✓ Cost Control Management
- ✓ Shortage Management
- ✓ Alternative Solution
- ✓ Excess Inventory Management