



X9C303

Logarithmic Digitally Controlled Potentiometer (XDCP™) Terminal Voltage ±5V, 100 Taps, Log Taper

FN8223  
Rev 2.00  
January 30, 2009

**Description**

The Intersil X9C303 is a digitally controlled potentiometer (XDCP). The device consists of a resistor array, wiper switches, a control section, and nonvolatile memory. The wiper position is controlled by a three-wire interface.

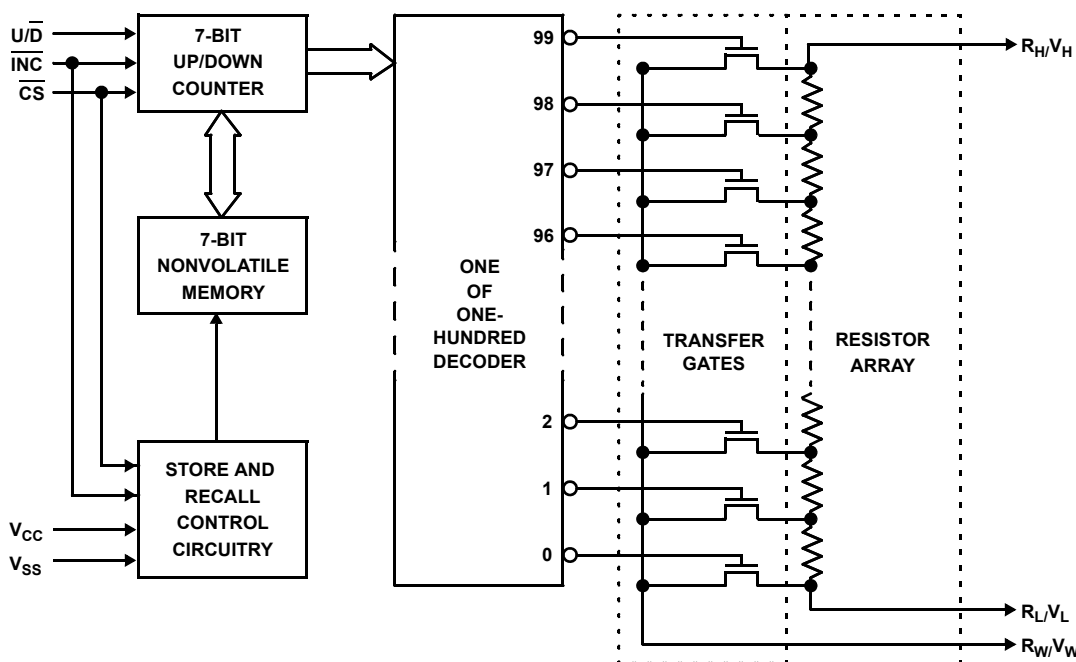
The resistor array is composed of 99 resistive elements. Between each element and at either end are tap points accessible to the wiper terminal. The position of the wiper element is controlled by the  $\overline{CS}$ ,  $U/\overline{D}$ , and  $\overline{INC}$  inputs. The position of the wiper can be stored in nonvolatile memory and then be recalled upon a subsequent power-up operation.

The device can be used as a three-terminal potentiometer or as a two-terminal variable resistor in a wide variety of applications ranging from control, to signal processing, to parameter adjustment. Digitally-controlled potentiometers provide three powerful application advantages; (1) the variability and reliability of a solid-state potentiometer, (2) the flexibility of computer-based digital controls, and (3) the use of nonvolatile memory for potentiometer settings retention.

**Features**

- Solid-state potentiometer
- Three-wire serial interface
- 100 wiper tap points
  - Wiper position stored in nonvolatile memory and recalled on power-up
- 99 resistive elements, log taper
  - Temperature compensated
  - End-to-end resistance, 32kΩ ±15%
  - Terminal voltages, ±5V
- Low power CMOS
  - V<sub>CC</sub> = 5V
  - Active current, 3mA max.
  - Standby current, 750µA max.
- High reliability
  - Endurance, 100,000 data changes per bit
  - Register data retention, 100 years
- Packages
  - 8 Ld TSSOP
  - 8 Ld SOIC
  - 8 Ld PDIP
- Pb-free available (RoHS compliant)

**Block Diagram**



## Ordering Information

| PART NUMBER             | PART MARKING | TEMP. RANGE (°C) | PACKAGE                       | PKG. DWG. # |
|-------------------------|--------------|------------------|-------------------------------|-------------|
| X9C303P                 | X9C303P      | 0 to +70         | 8 Ld PDIP                     | MDP0031     |
| X9C303PI                | X9C303P I    | -40 to +85       | 8 Ld PDIP                     | MDP0031     |
| X9C303PIZ (Notes 1, 2)  | X9C303P ZI   | -40 to +85       | 8 Ld PDIP (300 mil) (Pb-free) | MDP0031     |
| X9C303PZ (Notes 1, 2)   | X9C303P Z    | 0 to +70         | 8 Ld PDIP (300 mil) (Pb-free) | MDP0031     |
| X9C303S8*, **           | X9C303S      | 0 to +70         | 8 Ld SOIC (150 mil)           | MDP0027     |
| X9C303S8I*              | X9C303S I    | -40 to +85       | 8 Ld SOIC (150 mil)           | MDP0027     |
| X9C303S8IZ* (Note 1)    | X9C303S ZI   | -40 to +85       | 8 Ld SOIC (150 mil) (Pb-free) | MDP0027     |
| X9C303S8Z* (Note 1)     | X9C303S Z    | 0 to +70         | 8 Ld SOIC (150 mil) (Pb-free) | MDP0027     |
| X9C303V8*, **           | 9C303        | 0 to +70         | 8 Ld TSSOP (4.4mm)            | M8.173      |
| X9C303V8I*              | C303 I       | -40 to +85       | 8 Ld TSSOP (4.4mm)            | M8.173      |
| X9C303V8IZ* (Note 1)    | C303 IZ      | -40 to +85       | 8 Ld TSSOP (4.4mm) (Pb-free)  | M8.173      |
| X9C303V8Z* (Note 1)     | 9C303 Z      | 0 to +70         | 8 Ld TSSOP (4.4mm) (Pb-free)  | M8.173      |
| X9C303S8I-2.7           | X9C303S G    | -40 to +85       | 8 Ld SOIC (150 mil)           | MDP0027     |
| X9C303S8IZ-2.7 (Note 1) | X9C303S ZG   | -40 to +85       | 8 Ld SOIC (150 mil) (Pb-free) | MDP0027     |

\*Add "T1" suffix for tape and reel. Please refer to TB347 for details on reel specifications.

\*\*Add "T2" suffix for tape and reel. Please refer to TB347 for details on reel specifications.

### NOTES:

- These Intersil Pb-free plastic packaged products employ special Pb-free material sets, molding compounds/die attach materials, and 100% matte tin plate plus anneal (e3 termination finish, which is RoHS compliant and compatible with both SnPb and Pb-free soldering operations). Intersil Pb-free products are MSL classified at Pb-free peak reflow temperatures that meet or exceed the Pb-free requirements of IPC/JEDEC J STD-020.
- Pb-free PDIPs can be used for through hole wave solder processing only. They are not intended for use in Reflow solder processing applications.

## Pin Descriptions

### $V_H$ and $V_L$

The high ( $V_H$ ) and low ( $V_L$ ) terminals of the device are equivalent to the fixed terminals of a mechanical potentiometer. The minimum voltage is  $-5V$  and the maximum is  $+5V$ . It should be noted that the terminology of  $V_L$  and  $V_H$  references the relative position of the terminal in relation to wiper movement direction selected by the  $U/\overline{D}$  input and not the voltage potential on the terminal.

### $V_W$

$V_W$  is the wiper terminal, equivalent to the movable terminal of a mechanical potentiometer. The position of the wiper within the array is determined by the control inputs. The wiper terminal series resistance is typically  $40\Omega$ .

### Up/Down ( $U/\overline{D}$ )

The  $U/\overline{D}$  input controls the direction of the wiper movement and whether the counter is incremented or decremented.

### Increment ( $\overline{INC}$ )

The  $\overline{INC}$  input is negative-edge triggered. Toggling  $\overline{INC}$  will move the wiper and either increment or decrement the counter in the direction indicated by the logic level on the  $U/\overline{D}$  input.

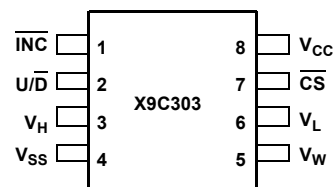
### Chip Select ( $\overline{CS}$ )

The device is selected when the  $\overline{CS}$  input is LOW. The current counter value is stored in nonvolatile memory when  $\overline{CS}$  is

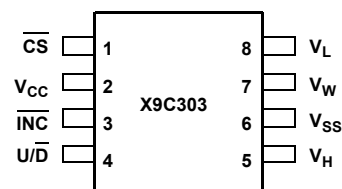
returned HIGH while the  $\overline{INC}$  input is also HIGH. After the store operation is complete, the device will be placed in the low power standby mode until the device is selected once again.

## Pinouts

**X9C303**  
(8 LD SOIC, 8 LD PDIP)  
TOP VIEW



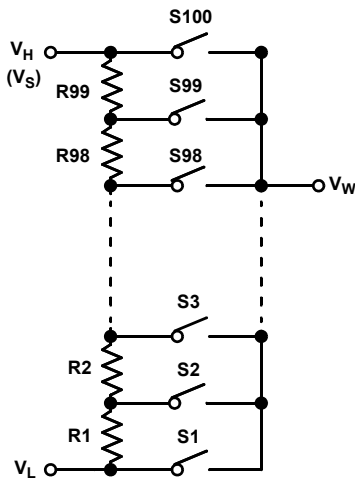
**X9C303**  
(8 LD TSSOP)  
TOP VIEW



**Pin Names**

| SYMBOL          | DESCRIPTION                    |
|-----------------|--------------------------------|
| V <sub>H</sub>  | High Terminal (Potentiometer)  |
| V <sub>W</sub>  | Wiper Terminal (Potentiometer) |
| V <sub>L</sub>  | Low Terminal (Potentiometer)   |
| V <sub>SS</sub> | Ground                         |
| V <sub>CC</sub> | Supply Voltage                 |
| U/D             | Up/Down Control Input          |
| INC             | Increment Control Input        |
| CS              | Chip Select Control Input      |
| NC              | No Connection                  |

**Potentiometer Relationships**



$$G_i = 20 \text{Log} \frac{R_1 + R_2 + \dots + R_i}{R_{\text{TOTAL}}} = \frac{V_W}{V_S} (V_L = 0V)$$

$$R_1 + R_2 + \dots + R_{99} = R_{\text{TOTAL}}$$

(REFER TEST CIRCUIT 1)

**Principles of Operation**

There are three sections of the X9C303: the input control, counter and decode section; the nonvolatile memory; and the resistor array. The input control section operates just like an up/down counter. The output of this counter is decoded to turn on a single electronic switch connecting a point on the resistor array to the wiper output. Under the proper conditions, the contents of the counter can be stored in nonvolatile memory and retained for future use. The resistor array is comprised of 99 individual resistors connected in series. At either end of the array and between each resistor is an electronic switch that transfers the potential at that point to the wiper.

The wiper, when at either fixed terminal, acts like its mechanical equivalent and does not move beyond the last position. That is, the counter does not wrap around when clocked to either extreme.

The electronic switches on the device operate in a “make before break” mode when the wiper changes tap positions. If the wiper is moved several positions, multiple taps are connected to the wiper for  $t_{IW}$  (INC to V<sub>W</sub> change). The R<sub>TOTAL</sub> value for the device can temporarily be reduced by a significant amount if the wiper is moved several positions.

When the device is powered-down, the last counter position stored will be maintained in the nonvolatile memory. When power is restored, the contents of the memory are recalled and the counter is reset to the value last stored.

**Instructions and Programming**

The INC, U/D and CS inputs control the movement of the wiper along the resistor array. With CS set LOW, the device is selected and enabled to respond to the U/D and INC inputs. HIGH to LOW transitions on INC will increment or decrement (depending on the state of the U/D input) a seven-bit counter. The output of this counter is decoded to select one of one-hundred wiper positions along the resistive array.

The value of the counter is stored in nonvolatile memory whenever CS transitions HIGH while the INC input is also HIGH.

The system may select the X9C303, move the wiper, and deselect the device without having to store the latest wiper position in nonvolatile memory. The wiper movement is performed as previously described; once the new position is reached, the system would keep INC LOW while taking CS HIGH. The new wiper position would be maintained until changed by the system or until a power-down/up cycle recalled the previously stored data.

This would allow the system to always power-up to a preset value stored in nonvolatile memory; then during system operation minor adjustments could be made. The adjustments might be based on user preference: system parameter changes due to temperature drift, etc.

The state of U/D may be changed while CS remains LOW. This allows the host system to enable the device and then move the wiper up and down until the proper trim is attained.

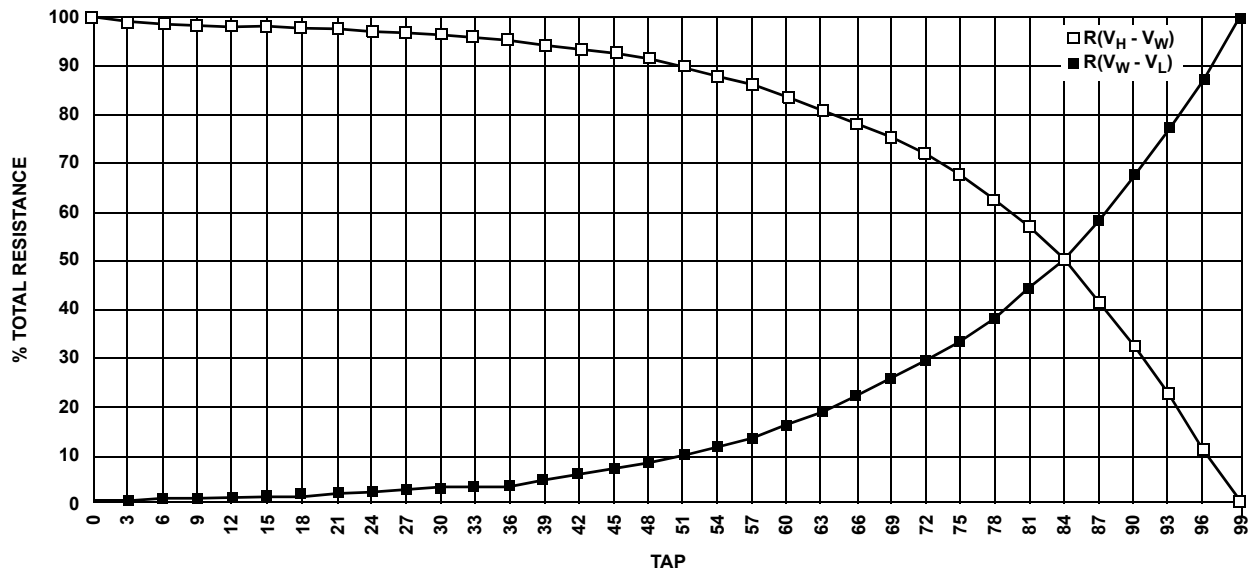
**Mode Selection**

| CS | INC | U/D | MODE                         |
|----|-----|-----|------------------------------|
| L  |     | H   | Wiper Up                     |
| L  |     | L   | Wiper Down                   |
|    | H   | X   | Store Wiper Position         |
| H  | X   | X   | Standby Current              |
|    | L   | X   | No Store, Return to Standby  |
|    | L   | H   | Wiper Up (not recommended)   |
|    | L   | L   | Wiper Down (not recommended) |

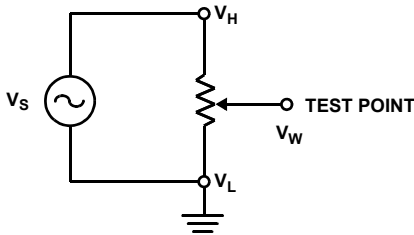
### Symbol Table

| WAVEFORM | INPUTS                      | OUTPUTS                       |
|----------|-----------------------------|-------------------------------|
|          | Must be steady              | Will be steady                |
|          | May change from Low to High | Will change from Low to High  |
|          | May change from High to Low | Will change from High to Low  |
|          | Don't Care: Changes Allowed | Changing: State Not Known     |
|          | N/A                         | Center Line is High Impedance |

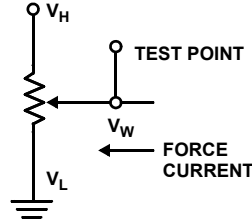
### Typical Electrical Taper



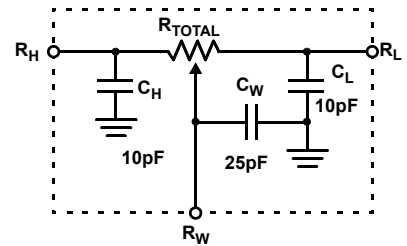
Test Circuit #1



Test Circuit #2



Circuit #3 SPICE Macro Model



## Absolute Maximum Ratings

|   |                 |
|---|-----------------|
| Temperature Under Bias  | -65°C to +135°C |
| Storage Temperature   | -65°C to +150°C |
| Voltage on $\overline{CS}$ , $\overline{INC}$ , U/D and $V_{CC}$ with Respect to $V_{SS}$ | -1V to +7V      |
| Voltage on $V_H$ and $V_L$ Referenced to $V_{SS}$   | -8V to +8V      |
| $\Delta V =  V_H - V_L $ X9C303   | 10V             |
| Wiper Current   | ±1mA            |

## Thermal Information

Pb-Free Reflow Profile. . . . . see link below  
<http://www.intersil.com/pbfree/Pb-FreeReflow.asp>  
 \*Pb-free PDIPs can be used for through hole wave solder processing only. They are not intended for use in Reflow solder processing applications.

## Recommended Operating Conditions

Commercial Temperature Range. . . . . 0°C to +70°C  
 Industrial Temperature Range . . . . . -40°C to +85°C  
 Military Temperature Range. . . . . -55°C to +125°C  
 Supply Voltage Range . . . . . 5V ±10%  
 Power Rating at +25°C X9C303 . . . . . 10mW  
 Physical Characteristics  
 Marking Includes  
 Manufacturer's Trademark  
 Resistance Value or Code  
 Date Code

**CAUTION:** Do not operate at or near the maximum ratings listed for extended periods of time. Exposure to such conditions may adversely impact product reliability and result in failures not covered by warranty.

## Analog Specifications

Over recommended operating conditions, unless otherwise specified. Parameters with MIN and/or MAX limits are 100% tested at +25°C, unless otherwise specified. Temperature limits established by characterization and are not production tested.

| SYMBOL   | PARAMETER                                     | TEST CONDITIONS   | LIMITS |                 |       | UNIT            |
|--|---|---|--------|-----------------|-------|-----------------|
|  |   |   | MIN    | TYP<br>(Note 3) | MAX   |                 |
| R <sub>TOTAL</sub>   | End-to-End Resistance                         |   |        | 32              |       | κΩ              |
|  | End-to-End Resistance Tolerance               |   | -15    |                 | +15   | %               |
| V <sub>H</sub>   | V <sub>H</sub> Terminal Voltage               |   | -5     |                 | +5    | V               |
| V <sub>L</sub>   | V <sub>L</sub> Terminal Voltage               |   | -5     |                 | +5    | V               |
| R <sub>W</sub>   | Wiper Resistance                              | Max Wiper Current ±1mA  |        | 40              | 100   | Ω               |
|  | Tap Position Relative Step Size Error         | Error = log (Vw(n)) - log (Vw(n - 1))<br>for tap n = 2 - 99, V <sub>H</sub> -V <sub>L</sub> = 10V | 0.005  |                 | 0.115 | dB              |
|  | Resistor Noise                                | At 1kHz   |        | 23              |       | nV(RMS)/<br>√Hz |
|  | Charge Pump Noise                             | At 850kHz   |        | 20              |       | mV(RMS)         |
|  | End-to-End Resistance Temperature Coefficient | T = -40°C to +85°C  |        | ±400            |       | ppm/°C          |
|  | Ratiometric Temperature Coefficient           | Tap position 84   |        | ±20             |       | ppm/°C          |
| C <sub>H</sub> /C <sub>L</sub> /C <sub>W</sub><br>(Note 5) | Potentiometer Capacitance                     | See "Circuit #3 SPICE Macro Model" on page 4  |        | 10/10/25        |       | pF              |

**DC Electrical Specifications** Over recommended operating conditions, unless otherwise specified. Parameters with MIN and/or MAX limits are 100% tested at +25°C, unless otherwise specified. Temperature limits established by characterization and are not production tested.

| SYMBOL                   | PARAMETER   | TEST CONDITIONS   | LIMITS  |              |     | UNIT   |
|--------------------------|---|---|---------|--------------|-----|--------|
|                          |   |   | MIN     | TYP (Note 3) | MAX |        |
| I <sub>CC</sub>          | V <sub>CC</sub> Active Current  | $\overline{CS} = V_{IL}$ , $U/\overline{D} = V_{IL}$ or $V_{IH}$ and $\overline{INC} = 0.4V$ to $2.4V$ @ Max t <sub>CYC</sub> |         | 1            | 3   | mA     |
| I <sub>SB</sub>          | Standby Supply Current  | $\overline{CS} = V_{CC} - 0.3V$ , $U/\overline{D}$ and $\overline{INC} = V_{SS}$ or $V_{CC} - 0.3V$                           |         | 200          | 750 | μA     |
| I <sub>LI</sub>          | $\overline{CS}$ , $\overline{INC}$ , $U/\overline{D}$ Input Leakage Current | V <sub>IN</sub> = V <sub>SS</sub> to V <sub>CC</sub>  | -10     |              | +10 | μA     |
| V <sub>IH</sub>          | $\overline{CS}$ , $\overline{INC}$ , $U/\overline{D}$ Input HIGH Voltage    |   | 2       |              |     | V      |
| V <sub>IL</sub>          | $\overline{CS}$ , $\overline{INC}$ , $U/\overline{D}$ Input LOW voltage     |   |         |              | 0.8 | V      |
| C <sub>IN</sub> (Note 5) | $\overline{CS}$ , $\overline{INC}$ , $U/\overline{D}$ Input Capacitance     | V <sub>CC</sub> = 5V, V <sub>IN</sub> = V <sub>SS</sub> , T <sub>A</sub> = +25°C, f = 1MHz                                    |         | 10           |     | pF     |
| <b>EEPROM SPECS</b>      |   |   |         |              |     |        |
|                          | EEPROM Endurance  | Wiper storage operations over recommended operation conditions  | 100,000 |              |     | Cycles |
|                          | EEPROM Retention  | At +55°C  |         | 100          |     | Years  |

NOTES:

3. Typical values are for T<sub>A</sub> = +25°C and nominal supply voltage.

### Standard Parts

| PART NUMBER | MAXIMUM RESISTANCE | WIPER INCREMENTS | MINIMUM RESISTANCE |
|-------------|--------------------|------------------|--------------------|
| X9C303      | 32kΩ               | Log Taper        | 40Ω Typical        |

### AC Conditions of Test

|                           |          |
|---------------------------|----------|
| Input Pulse Levels        | 0V to 3V |
| Input Rise and Fall Times | 10ns     |
| Input Reference Levels    | 1.5V     |

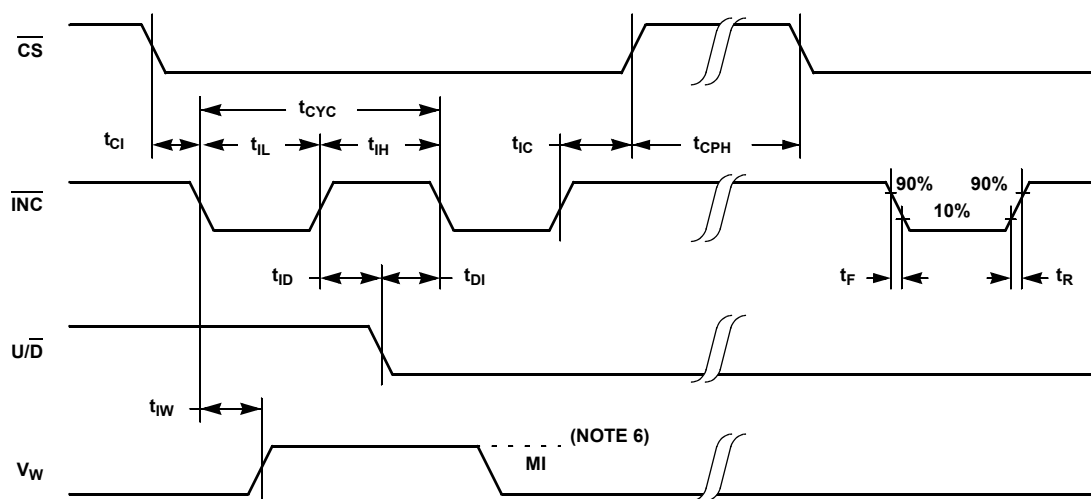
**AC Electrical Specifications** Over recommended operating conditions, unless otherwise specified. Parameters with MIN and/or MAX limits are 100% tested at +25°C, unless otherwise specified. Temperature limits established by characterization and are not production tested.

| SYMBOL                   | PARAMETER   | LIMITS |              |     | UNIT |
|--------------------------|---|--------|--------------|-----|------|
|                          |   | MIN    | TYP (Note 4) | MAX |      |
| t <sub>CI</sub>          | $\overline{CS}$ to $\overline{INC}$ Set-up            | 100    |              |     | ns   |
| t <sub>ID</sub>          | $\overline{INC}$ HIGH to $U/\overline{D}$ Change      | 100    |              |     | ns   |
| t <sub>DI</sub>          | $U/\overline{D}$ to $\overline{INC}$ Set-up           | 2.9    |              |     | μs   |
| t <sub>IL</sub>          | $\overline{INC}$ LOW Period                           | 1      |              |     | μs   |
| t <sub>IH</sub>          | $\overline{INC}$ HIGH Period                          | 1      |              |     | μs   |
| t <sub>IC</sub>          | $\overline{INC}$ Inactive to $\overline{CS}$ Inactive | 1      |              |     | μs   |
| t <sub>CPH</sub>         | $\overline{CS}$ Deselect Time                         | 20     |              |     | ms   |
| t <sub>IW</sub> (Note 5) | $\overline{INC}$ to V <sub>W</sub> Change             |        | 100          |     | μs   |
| t <sub>CYC</sub>         | $\overline{INC}$ Cycle Time                           | 2      |              |     | μs   |

**AC Electrical Specifications** Over recommended operating conditions, unless otherwise specified. Parameters with MIN and/or MAX limits are 100% tested at +25°C, unless otherwise specified. Temperature limits established by characterization and are not production tested. **(Continued)**

| SYMBOL                | PARAMETER  | LIMITS |                 |     | UNIT                    |
|-----------------------|--|--------|-----------------|-----|-------------------------|
|                       |  | MIN    | TYP<br>(Note 4) | MAX |                         |
| $t_R, t_F$ (Note 5)   | $\overline{\text{INC}}$ Input Rise and Fall Time |        |                 | 500 | ns                      |
| $t_{PU}$ (Note 5)     | Power-up to Wiper Stable                         |        | 500             |     | $\mu\text{s}$           |
| $t_R V_{CC}$ (Note 5) | $V_{CC}$ Power-up Rate                           | 0.2    |                 | 50  | $\text{mV}/\mu\text{s}$ |

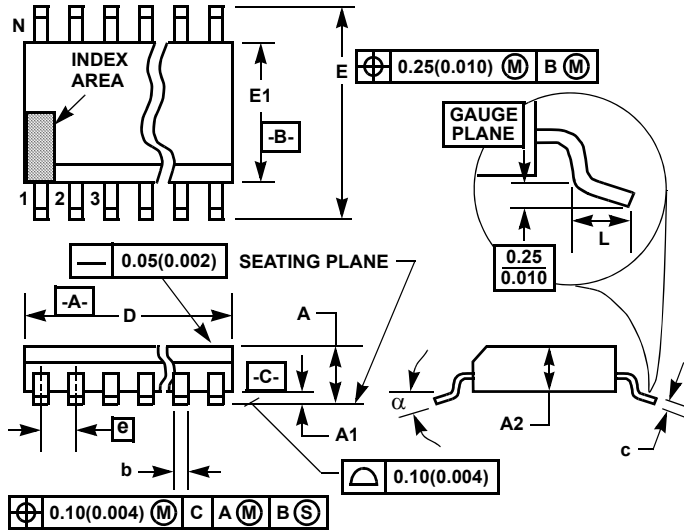
### AC Timing Diagram



#### NOTES:

- Typical values are for  $T_A = +25^\circ\text{C}$  and nominal supply voltage.
- This parameter is not 100% tested.
- MI in the "AC Timing Diagram" refers to the minimum incremental change in the  $V_w$  output due to a change in the wiper position.

**Thin Shrink Small Outline Plastic Packages (TSSOP)**



**M8.173**

**8 LEAD THIN SHRINK NARROW BODY SMALL OUTLINE PLASTIC PACKAGE**

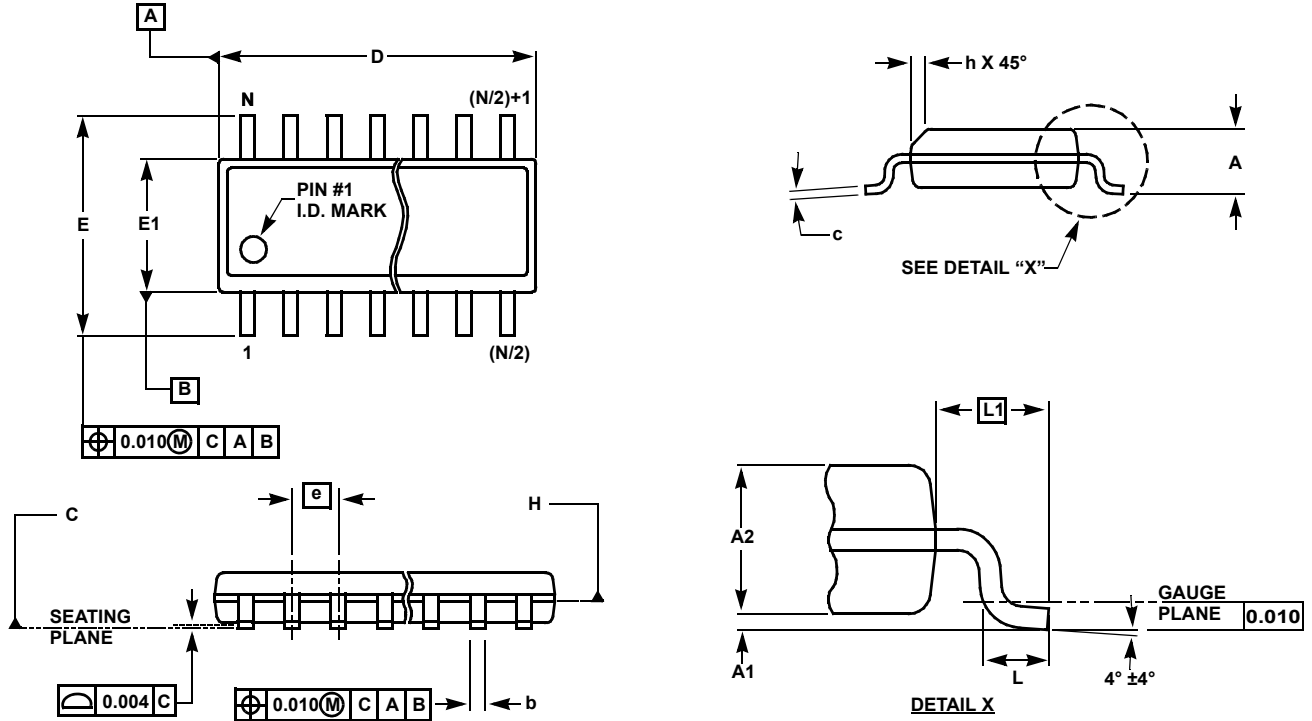
| SYMBOL | INCHES    |        | MILLIMETERS |      | NOTES |
|--------|-----------|--------|-------------|------|-------|
|        | MIN       | MAX    | MIN         | MAX  |       |
| A      | -         | 0.047  | -           | 1.20 | -     |
| A1     | 0.002     | 0.006  | 0.05        | 0.15 | -     |
| A2     | 0.031     | 0.051  | 0.80        | 1.05 | -     |
| b      | 0.0075    | 0.0118 | 0.19        | 0.30 | 9     |
| c      | 0.0035    | 0.0079 | 0.09        | 0.20 | -     |
| D      | 0.116     | 0.120  | 2.95        | 3.05 | 3     |
| E1     | 0.169     | 0.177  | 4.30        | 4.50 | 4     |
| e      | 0.026 BSC |        | 0.65 BSC    |      | -     |
| E      | 0.246     | 0.256  | 6.25        | 6.50 | -     |
| L      | 0.0177    | 0.0295 | 0.45        | 0.75 | 6     |
| N      | 8         |        | 8           |      | 7     |
| α      | 0°        | 8°     | 0°          | 8°   | -     |

Rev. 1 12/00

**NOTES:**

1. These package dimensions are within allowable dimensions of JEDEC MO-153-AC, Issue E.
2. Dimensioning and tolerancing per ANSI Y14.5M-1982.
3. Dimension "D" does not include mold flash, protrusions or gate burrs. Mold flash, protrusion and gate burrs shall not exceed 0.15mm (0.006 inch) per side.
4. Dimension "E1" does not include interlead flash or protrusions. Interlead flash and protrusions shall not exceed 0.15mm (0.006 inch) per side.
5. The chamfer on the body is optional. If it is not present, a visual index feature must be located within the crosshatched area.
6. "L" is the length of terminal for soldering to a substrate.
7. "N" is the number of terminal positions.
8. Terminal numbers are shown for reference only.
9. Dimension "b" does not include dambar protrusion. Allowable dambar protrusion shall be 0.08mm (0.003 inch) total in excess of "b" dimension at maximum material condition. Minimum space between protrusion and adjacent lead is 0.07mm (0.0027 inch).
10. Controlling dimension: MILLIMETER. Converted inch dimensions are not necessarily exact. (Angles in degrees)

**Small Outline Package Family (SO)**



**MDP0027**

**SMALL OUTLINE PACKAGE FAMILY (SO)**

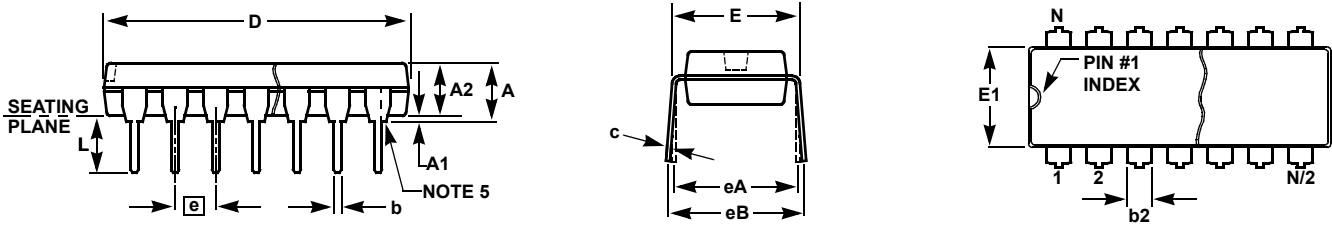
| SYMBOL | INCHES |       |               |                        |               |               |               | TOLERANCE | NOTES |
|--------|--------|-------|---------------|------------------------|---------------|---------------|---------------|-----------|-------|
|        | SO-8   | SO-14 | SO16 (0.150") | SO16 (0.300") (SOL-16) | SO20 (SOL-20) | SO24 (SOL-24) | SO28 (SOL-28) |           |       |
| A      | 0.068  | 0.068 | 0.068         | 0.104                  | 0.104         | 0.104         | 0.104         | MAX       | -     |
| A1     | 0.006  | 0.006 | 0.006         | 0.007                  | 0.007         | 0.007         | 0.007         | ±0.003    | -     |
| A2     | 0.057  | 0.057 | 0.057         | 0.092                  | 0.092         | 0.092         | 0.092         | ±0.002    | -     |
| b      | 0.017  | 0.017 | 0.017         | 0.017                  | 0.017         | 0.017         | 0.017         | ±0.003    | -     |
| c      | 0.009  | 0.009 | 0.009         | 0.011                  | 0.011         | 0.011         | 0.011         | ±0.001    | -     |
| D      | 0.193  | 0.341 | 0.390         | 0.406                  | 0.504         | 0.606         | 0.704         | ±0.004    | 1, 3  |
| E      | 0.236  | 0.236 | 0.236         | 0.406                  | 0.406         | 0.406         | 0.406         | ±0.008    | -     |
| E1     | 0.154  | 0.154 | 0.154         | 0.295                  | 0.295         | 0.295         | 0.295         | ±0.004    | 2, 3  |
| e      | 0.050  | 0.050 | 0.050         | 0.050                  | 0.050         | 0.050         | 0.050         | Basic     | -     |
| L      | 0.025  | 0.025 | 0.025         | 0.030                  | 0.030         | 0.030         | 0.030         | ±0.009    | -     |
| L1     | 0.041  | 0.041 | 0.041         | 0.056                  | 0.056         | 0.056         | 0.056         | Basic     | -     |
| h      | 0.013  | 0.013 | 0.013         | 0.020                  | 0.020         | 0.020         | 0.020         | Reference | -     |
| N      | 8      | 14    | 16            | 16                     | 20            | 24            | 28            | Reference | -     |

Rev. M 2/07

**NOTES:**

1. Plastic or metal protrusions of 0.006" maximum per side are not included.
2. Plastic interlead protrusions of 0.010" maximum per side are not included.
3. Dimensions "D" and "E1" are measured at Datum Plane "H".
4. Dimensioning and tolerancing per ASME Y14.5M-1994

**Plastic Dual-In-Line Packages (PDIP)**



**MDP0031**

**PLASTIC DUAL-IN-LINE PACKAGE**

| SYMBOL | INCHES |        |        |        |        | TOLERANCE     | NOTES |
|--------|--------|--------|--------|--------|--------|---------------|-------|
|        | PDIP8  | PDIP14 | PDIP16 | PDIP18 | PDIP20 |               |       |
| A      | 0.210  | 0.210  | 0.210  | 0.210  | 0.210  | MAX           |       |
| A1     | 0.015  | 0.015  | 0.015  | 0.015  | 0.015  | MIN           |       |
| A2     | 0.130  | 0.130  | 0.130  | 0.130  | 0.130  | ±0.005        |       |
| b      | 0.018  | 0.018  | 0.018  | 0.018  | 0.018  | ±0.002        |       |
| b2     | 0.060  | 0.060  | 0.060  | 0.060  | 0.060  | +0.010/-0.015 |       |
| c      | 0.010  | 0.010  | 0.010  | 0.010  | 0.010  | +0.004/-0.002 |       |
| D      | 0.375  | 0.750  | 0.750  | 0.890  | 1.020  | ±0.010        | 1     |
| E      | 0.310  | 0.310  | 0.310  | 0.310  | 0.310  | +0.015/-0.010 |       |
| E1     | 0.250  | 0.250  | 0.250  | 0.250  | 0.250  | ±0.005        | 2     |
| e      | 0.100  | 0.100  | 0.100  | 0.100  | 0.100  | Basic         |       |
| eA     | 0.300  | 0.300  | 0.300  | 0.300  | 0.300  | Basic         |       |
| eB     | 0.345  | 0.345  | 0.345  | 0.345  | 0.345  | ±0.025        |       |
| L      | 0.125  | 0.125  | 0.125  | 0.125  | 0.125  | ±0.010        |       |
| N      | 8      | 14     | 16     | 18     | 20     | Reference     |       |

Rev. C 2/07

**NOTES:**

1. Plastic or metal protrusions of 0.010" maximum per side are not included.
2. Plastic interlead protrusions of 0.010" maximum per side are not included.
3. Dimensions E and eA are measured with the leads constrained perpendicular to the seating plane.
4. Dimension eB is measured with the lead tips unconstrained.
5. 8 and 16 lead packages have half end-leads as shown.

© Copyright Intersil Americas LLC 2005-2009. All Rights Reserved.  
 All trademarks and registered trademarks are the property of their respective owners.

For additional products, see [www.intersil.com/en/products.html](http://www.intersil.com/en/products.html)

Intersil products are manufactured, assembled and tested utilizing ISO9001 quality systems as noted in the quality certifications found at [www.intersil.com/en/support/qualandreliability.html](http://www.intersil.com/en/support/qualandreliability.html)

*Intersil products are sold by description only. Intersil may modify the circuit design and/or specifications of products at any time without notice, provided that such modification does not, in Intersil's sole judgment, affect the form, fit or function of the product. Accordingly, the reader is cautioned to verify that datasheets are current before placing orders. Information furnished by Intersil is believed to be accurate and reliable. However, no responsibility is assumed by Intersil or its subsidiaries for its use; nor for any infringements of patents or other rights of third parties which may result from its use. No license is granted by implication or otherwise under any patent or patent rights of Intersil or its subsidiaries.*

For information regarding Intersil Corporation and its products, see [www.intersil.com](http://www.intersil.com)

## Looking for pricing, stock, or lifecycle information?

Click below to explore more details on WIN SOURCE:

 [View X9C303S8I on WIN SOURCE](#)

 [Intersil Information](#)

## Optimize Your Supply Chain with WIN SOURCE Solutions

-  Global Sourcing Solution
-  Obsolete Management
-  Cost Control Management
-  Shortage Management
-  Alternative Solution
-  Excess Inventory Management