

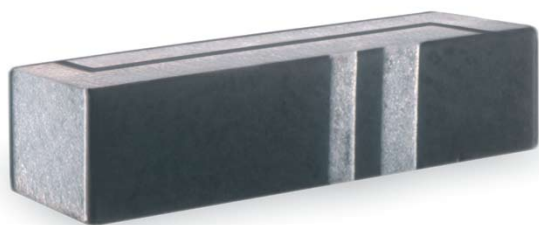


**THE DATASHEET OF  
W3047A**



# 850/1900MHz Dual Band Diversity RX Ceramic Antenna

Ceramic Chip Antenna. PWB ground removal area under antenna 12.80 x 6.25 mm. Pulse Part Number: W3047A



## Features

- PIFA antenna
- Dual band operation, single feed point
- SMD compatible
- Lead free materials
- Size W x L x H (12 x 3 x 3 mm)
- Weight: 530 mg
- RoHS Compliant

## Applications

- Dual band US GSM Rx
- 850MHz/1900MHz Rx

## W3047A Dual band diversity antenna typical performance @ +25 °C

*Note: Performance figures are measured when antenna is mounted on Pulse evaluation board*

Frequency Range [MHz]	Efficiency [%] / [dB]	Impedance [ $\Omega$ ]
869-894	50 / -3 (peak)	50
1930-1990	70 / -1,55 (peak)	

### Pulse Finland Oy

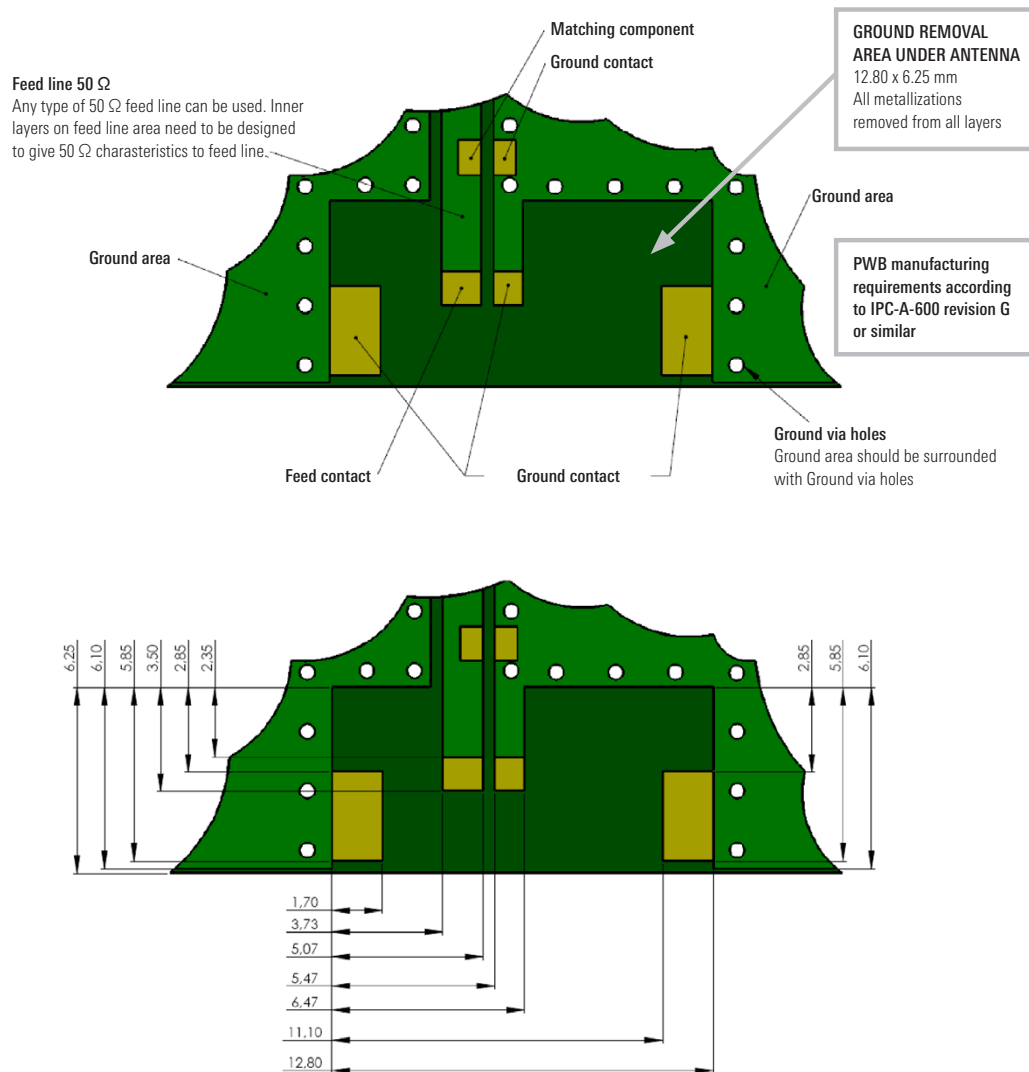
Takatie 6  
90440 Kempele, Finland  
Tel: +358 207 935 500  
Fax: +358 207 935 501

[www.pulseeng.com/antennas](http://www.pulseeng.com/antennas)



# 850/1900MHz Dual Band Diversity RX Ceramic Antenna

Ceramic Chip Antenna. PWB ground removal area under antenna 12.80 x 6.25 mm. Pulse Part Number: W3047A



## Recommended Antenna Pad Dimensions on PWB Layout (top surface)

No.	Terminal Name	Terminal Dimensions [mm]
1	Feed	1.34 x 1.15
2	GND	1.00 x 1.15
3	GND	3.00 x 1.70
4	GND	3.00 x 1.70

### Pulse Finland Oy

Takatie 6  
 90440 Kempele, Finland  
 Tel: +358 207 935 500  
 Fax: +358 207 935 501

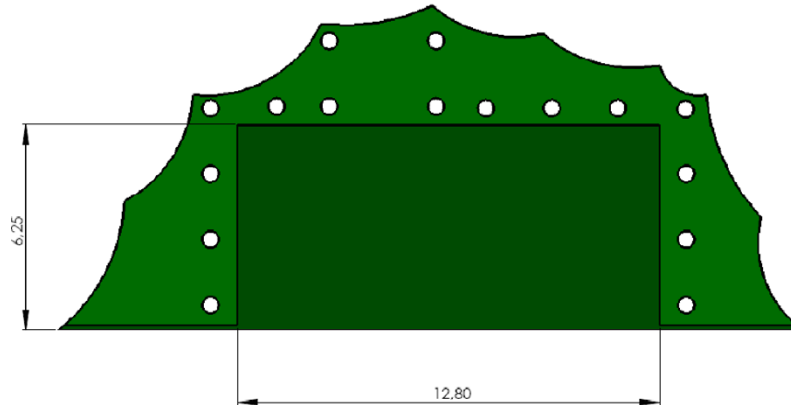
[www.pulseeng.com/antennas](http://www.pulseeng.com/antennas)



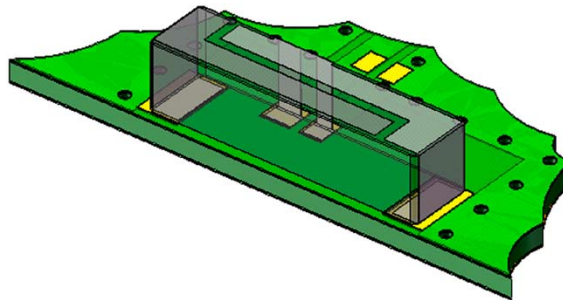
# 850/1900MHz Dual Band Diversity RX Ceramic Antenna

Ceramic Chip Antenna. PWB ground removal area under antenna 12.80 x 6.25 mm. Pulse Part Number: W3047A

## Recommended ground clearance area under antenna on PWB (bottom surface)



## 3D-view of test setup



# 850/1900MHz Dual Band Diversity RX Ceramic Antenna

Ceramic Chip Antenna. PWB ground removal area under antenna 12.80 x 6.25 mm. Pulse Part Number: W3047A

## W3047A Dual band diversity antenna typical Return Loss and Smith chart

Antenna location is on side center of 40x100mm Pulse evaluation board

### W3047A

2 Oct 2009 13:48:24

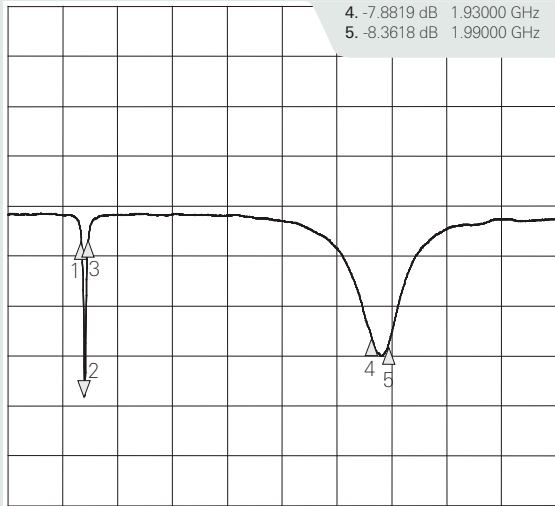
#### CH1Markers

1. -2.1806 dB 869.000 MHz
2. -11.348 dB 881.000 MHz
3. -2.0187 dB 894.000 MHz
4. -7.8819 dB 1.93000 GHz
5. -8.3618 dB 1.99000 GHz

CH1 S11&LOG

3 dB/REF 0 dB

Cor



START 600.000 000 MHz

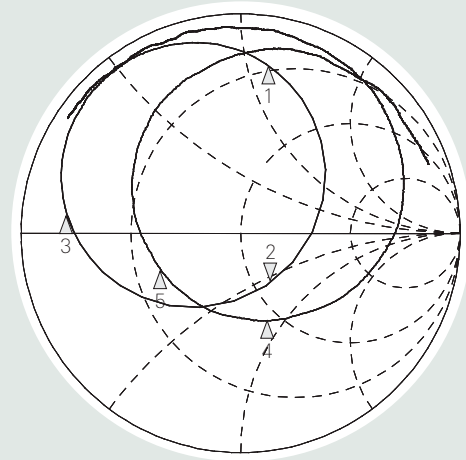
STOP 2 600.000 000 MHz

### W3047A

2 Oct 2009 13:48:08

- |             |           |             |
|-------------|-----------|-------------|
| 1. 14.805 Ω | 56.750 Ω  | 869.000 MHz |
| 2. 59.309 Ω | -27.367 Ω | 6.6011 pF   |
| 3. 5.8682 Ω | 2.4009 Ω  | 894.000 MHz |
| 4. 44.785 Ω | -43.000 Ω | 1.93000 GHz |
| 5. 22.369 Ω | -8.9463 Ω | 1.99000 GHz |

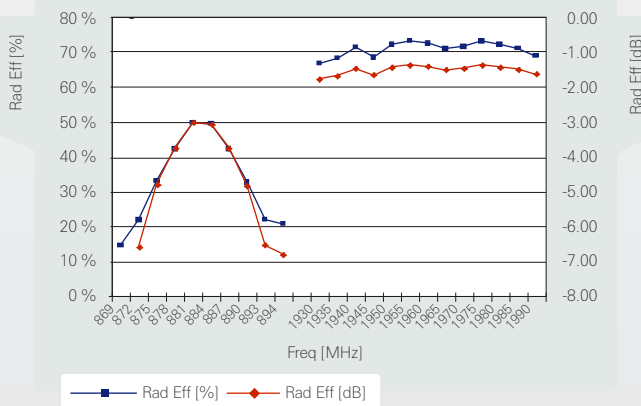
CH1 S11 1 U FS



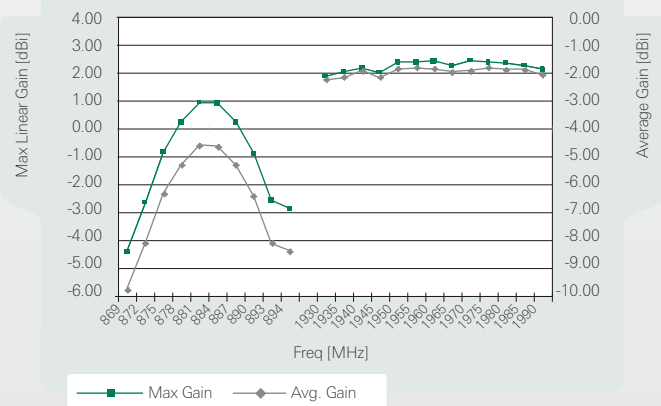
START 600.000 000 MHz

STOP 2 600.000 000 MHz

## W3047A Efficiency



## W3047A Gain



### Pulse Finland Oy

Takatie 6  
90440 Kempele, Finland  
Tel: +358 207 935 500  
Fax: +358 207 935 501  
[www.pulseeng.com/antennas](http://www.pulseeng.com/antennas)



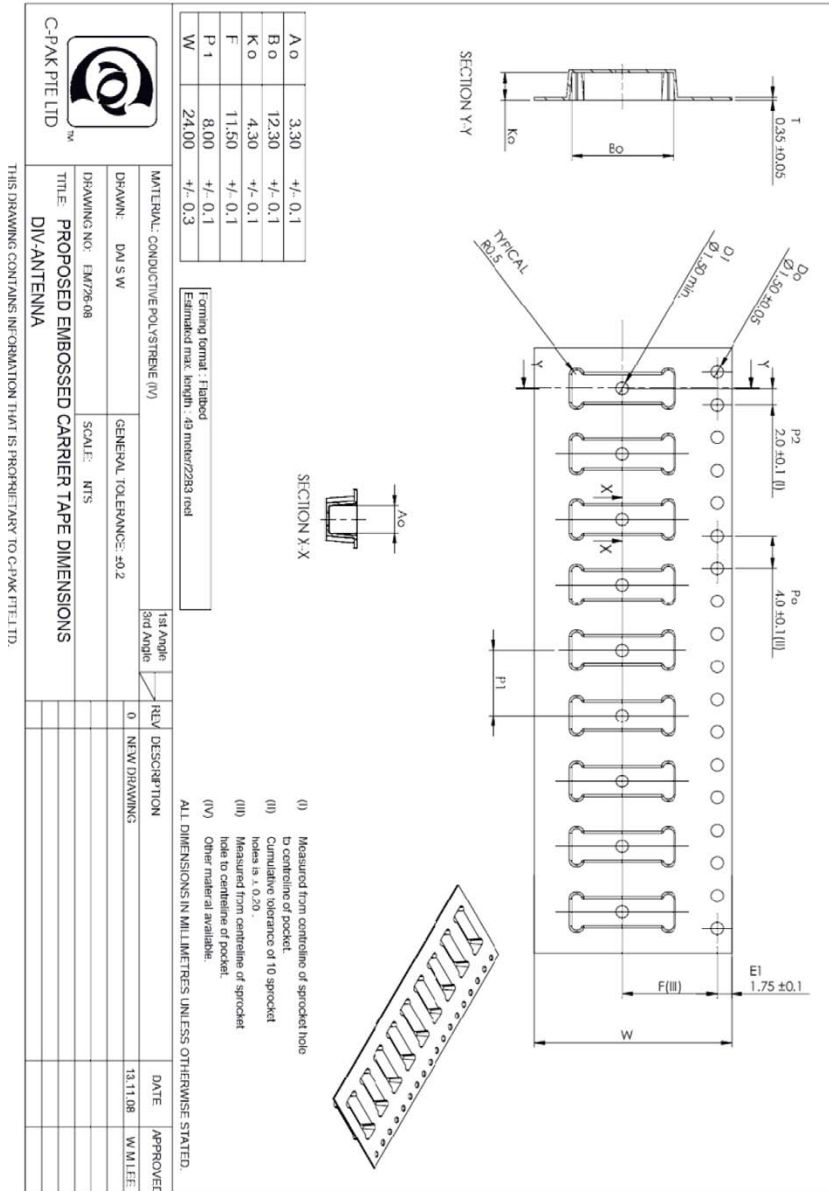
# 850/1900MHz Dual Band Diversity RX Ceramic Antenna

Ceramic Chip Antenna. PWB ground removal area under antenna 12.80 x 6.25 mm. Pulse Part Number: W3047A

## General

Tape and reel packing is used. Carrier tape, reel and box dimensions are presented in following pictures.

## Carrier tape



Pulse Finland Oy

Takatie 6  
90440 Kempele, Finland  
Tel: +358 207 935 500  
Fax: +358 207 935 501  
[www.pulseeng.com/antennas](http://www.pulseeng.com/antennas)

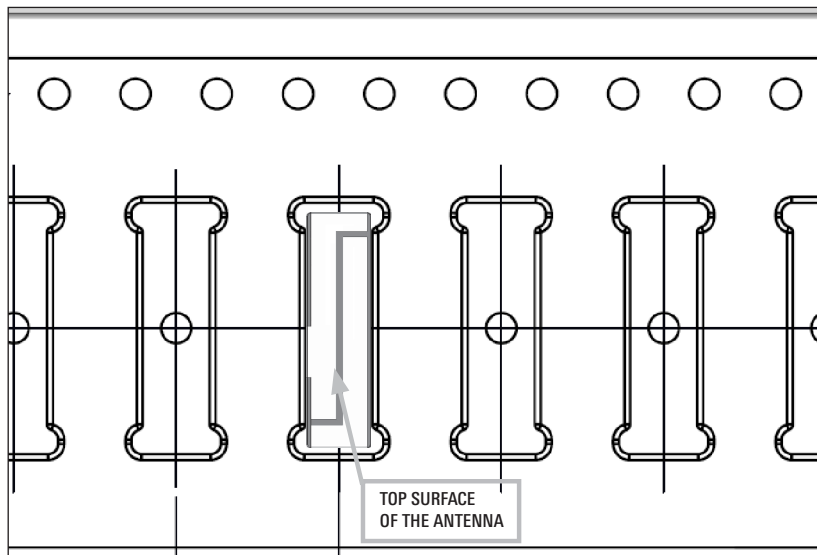


# 850/1900MHz Dual Band Diversity RX Ceramic Antenna

Ceramic Chip Antenna. PWB ground removal area under antenna 12.80 x 6.25 mm. Pulse Part Number: W3047A

## Block orientation

Antenna soldering pads facing down to the bottom of the carrier tape.



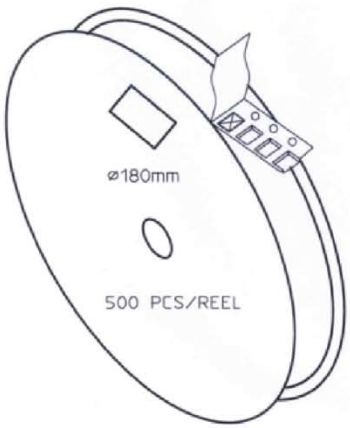
Top View of the Carrier Tape

## Pulse Finland Oy

Takatie 6  
90440 Kempele, Finland  
Tel: +358 207 935 500  
Fax: +358 207 935 501  
[www.pulseeng.com/antennas](http://www.pulseeng.com/antennas)

# 850/1900MHz Dual Band Diversity RX Ceramic Antenna

Ceramic Chip Antenna. PWB ground removal area under antenna 12.80 x 6.25 mm. Pulse Part Number: W3047A

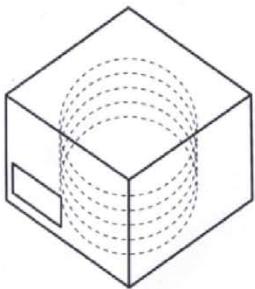


CARRIER TAPE H85-00201  
 width=24,00 depth=4.30  
 COVER TAPE H85-00195  
 width=21.20

LENGTH OF TAPE:


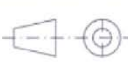
- Leader section: min 350 mm before component section
- Trailer section: min 40 mm after component section.

Empty part cavities at leader and trailer section of the tape must be sealed with top cover tape.



BOX H85-00128                      1 pcs  
 (182x182x125)  
 - LABEL                                  1 pcs/BOX

REEL H85-00196                      4 pcs  
 (D180, W28)  
 - REEL LABEL                          1 pcs/REEL

MATERIAL			
HANDLINGS			
		RATIO	
		DRWN	250509 PeHa H
PRODUCT		DGNER	G
		CHKD	F
		APPRD	E
		APPRD BY	D
DENOMINATION	PACKING FORM		C
			B
			A
		VERSION	MOD/DATE/NAME

**Pulse Finland Oy**

Takatie 6  
 90440 Kempele, Finland  
 Tel: +358 207 935 500  
 Fax: +358 207 935 501  
[www.pulseeng.com/antennas](http://www.pulseeng.com/antennas)









## Looking for pricing, stock, or lifecycle information?

Click below to explore more details on WIN SOURCE:

 [View W3047A on WIN SOURCE](#)

 [Pulse Information](#)

## Optimize Your Supply Chain with WIN SOURCE Solutions

-  Global Sourcing Solution
-  Obsolete Management
-  Cost Control Management
-  Shortage Management
-  Alternative Solution
-  Excess Inventory Management