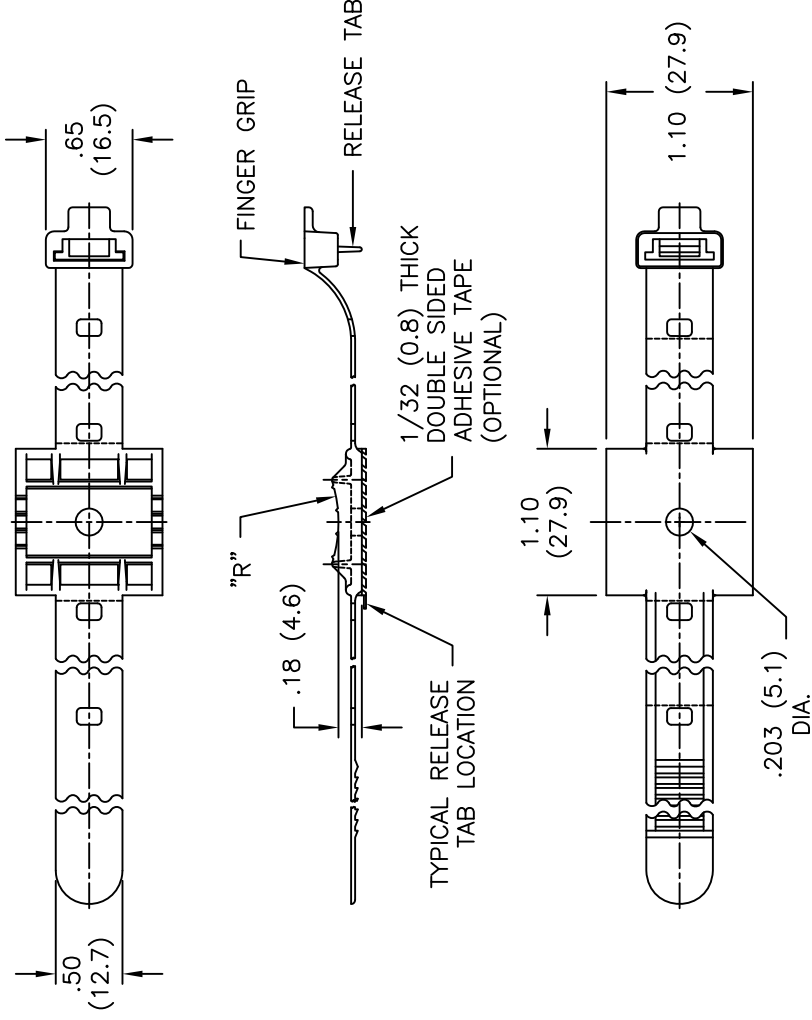




**THE DATASHEET OF
UMS-24-45**



PART NO.	
W/O TAPE	W/TAPE
UMS-16-45	UMS-16-45A-RT
UMS-24-45	UMS-24-45A-RT
UMS-32-45	UMS-32-45A-RT



RICHCO RIVET NO.
SR5045
SR5055
SR5065
SR5075
SR5085
SR5095
SR5105

NOTES:



1. MATERIAL: NYLON 6/6 (RMS-45).
2. COLOR: BLACK.
3. FOR MOUNTING USE SNAP RIVETS "SR-SERIES", #6 SCREW OR ACRYLIC ADHESIVE TAPE (RMS-15).

TITLE: UNIVERSAL MOUNTING STRAP

D	SEE CO 200171 FOR CHANGES	SK 04.29.08	FILE # UMS	DWN: P.B.	APP:
C	SEE ECN #551 FOR CHANGES	SM 01.07.03	MAT'L: SEE NOTES	DT: 01-18-95	IDT:
B	CHANGED TAPE NOTE AND FILE NO.	SM 12.11.01	RE: RICHCO, INC.	RICHCO INC. PO BOX 804238, CHICAGO, 60688 (773) 539-4060	
A	CHANGED RMS-73 TO RMS-45	JB 04.22.96	TOLERANCES UNLESS NOTED .XX=±.010 .XXX=±.005 FRAC=±1/64 ANG=±1°		
REV	DESCRIPTION	ENGR	DATE		

Looking for pricing, stock, or lifecycle information?

Click below to explore more details on WIN SOURCE:

-  [View UMS-24-45 on WIN SOURCE](#)
-  [Essentra Components](#) Information

Optimize Your Supply Chain with WIN SOURCE Solutions

-  Global Sourcing Solution
-  Obsolete Management
-  Cost Control Management
-  Shortage Management
-  Alternative Solution
-  Excess Inventory Management