

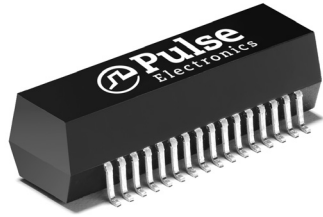








**THE DATASHEET OF
TX1475NL**



T1/E1/CEPT/ISDN-PRI TRANSFORMER

Octal SMT Transformer Module, Small Package



-  RoHS peak reflow temperature rating 245°C
-  Industry's smallest T1/E1 quad-port transformer module
-  Crosstalk: -60 dB typically
-  Operating temperature range: -40°C to +85°C
-  UL recognized (some parts pending approval)
-  Isolation voltage: 1500 Vrms

Electrical Specifications @ 25°C - Operating Temperature -40°C to +85°C

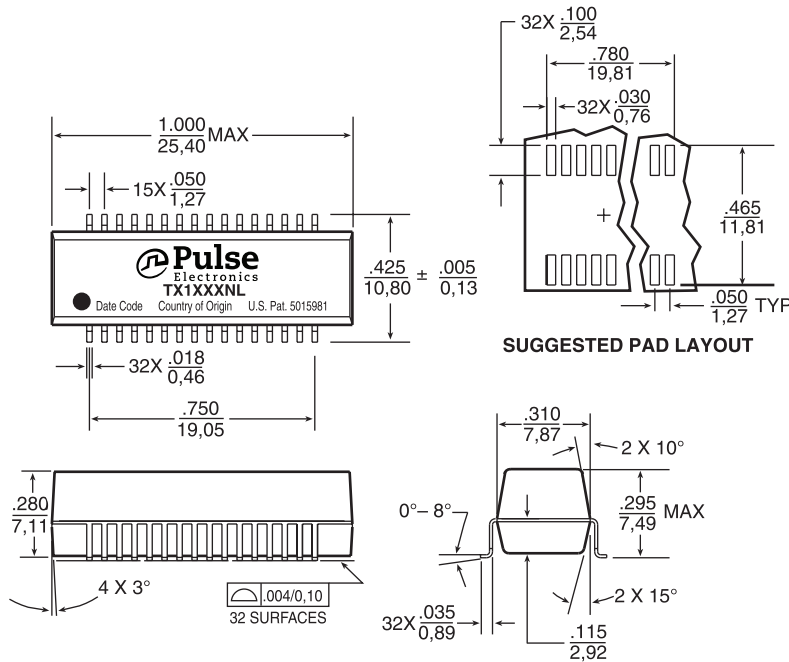
| RoHS-6 Compliant Part Number | Turns Ratio (Pri:Sec 2%) | OCL Secondary @ 25°C (mH MIN) | L _L (μH MAX) | C _{w/w} (pF MAX) | Isolation Voltage (Vrms MIN) | Package/Schematic | Primary Pins |
|------------------------------|--------------------------|-------------------------------|-------------------------|---------------------------|------------------------------|-------------------|---|
| TX1341NL | 1:2 | 1.2 | .60 | 30 | 1500 | YB/1 | 1-2, 3-4, 5-6, 7-8 9-10, 11-12, 13-14, 15-16 |
| TX1344NL | 1:1 & 1:2 | 1.2 | .60 | 40 | 1500 | YB/1 | 1-2, 5-6, 9-10, 13-14 & 3-4, 7-8, 11-12, 15-16 |
| TX1470NL | 1:1.41 | 1.2 | .60 | 30 | 1500 | YB/1 | 1-2, 3-4, 5-6, 7-8 9-10, 11-12, 13-14, 15-16 |
| TX1471NL | 1:1 | 1.2 | .60 | 30 | 1500 | YB/1 | 1-2, 3-4, 5-6, 7-8 9-10, 11-12, 13-14, 15-16 |
| TX1472NL | 1:2.4 & 1:1 | 1.2 | .60 | 30 | 1500 | YB/1 | 1-2, 7-8, 9-10, 15-16 & 3-4, 5-6, 11-12, 13-14 |
| TX1473NL | 1:2 & 1:1 | 1.2 | .60 | 30 | 1500 | YB/1 | 1-2, 5-6, 9-10, 13-14 & 3-4, 5-6, 11-12, 15-16 |
| TX1474NL | 1:2.42 | 1.2 | .60 | 30 | 1500 | YB/1 | 1-2, 5-6, 9-10, 13-14 & 3-4, 5-6, 11-12, 15-16 |
| TX1475NL | 1:2 & 1:1 | 1.2 | .60 | 30 | 1500 | YB/1 | 1-2, 7-8, 9-10, 15-16 & 3-4, 5-6, 11-12, 13-14 |

T1/E1/CEPT/ISDN-PRI TRANSFORMER

Octal SMT Transformer Module, Small Package

Mechanical

YB



Weight2.7 grams

Tape & Reel200/reel

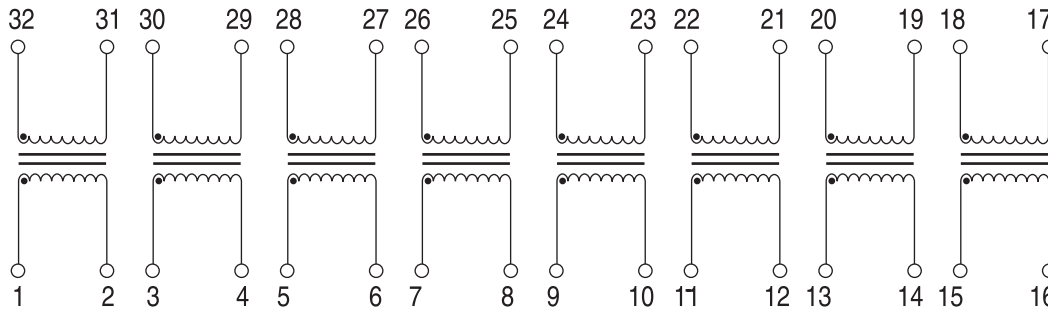
Tray20/tray

Dimensions: $\frac{\text{Inches}}{\text{mm}}$

Unless otherwise specified,
all tolerances are $\pm \frac{.010}{0.25}$

Schematic

1



For More Information

Pulse Worldwide Headquarters
12220 World Trade Drive
San Diego, CA
92128
U.S.A.

Pulse Europe
Zeppelinstrasse 15
D-71083 Herrenberg
Germany

Tel: 49 7032 78060
Fax: 49 7032 7806 135

Pulse China Headquarters
B402, Shenzhen Academy of
Aerospace Technol-
ogy Bldg.
10th Kejinan Road
High-Tech Zone
Nanshan District
Shenzhen, PR China
518057
Tel: 86 755 33966678
Fax: 86 755 33966700

Pulse North China
Room 2704/2705
Super Ocean Finance
Ctr.
2067 Yan An Road
West
Shanghai 200336
China

Tel: 86 21 62787060
Fax: 86 2162786973

Pulse South Asia
135 Joo Seng Road
#03-02
PM Industrial Bldg.
Singapore 368363

Tel: 65 6287 8998
Fax: 65 6287 8998

Pulse North Asia
3F, No. 198
Zhongyuan Road
Zhongli City
Taoyuan County 320
Taiwan R. O. C.
Tel: 886 3 4356768
Fax: 886 3 4356823 (Pulse)
Fax: 886 3 4356820 (FRE)

Performance warranty of products offered on this data sheet is limited to the parameters specified. Data is subject to change without notice. Other brand and product names mentioned herein may be trademarks or registered trademarks of their respective owners. © Copyright, 2012. Pulse Electronics, Inc. All rights reserved.

Looking for pricing, stock, or lifecycle information?

Click below to explore more details on WIN SOURCE:

 [View TX1475NL on WIN SOURCE](#)

 [Pulse Information](#)

Optimize Your Supply Chain with WIN SOURCE Solutions

-  Global Sourcing Solution
-  Obsolete Management
-  Cost Control Management
-  Shortage Management
-  Alternative Solution
-  Excess Inventory Management