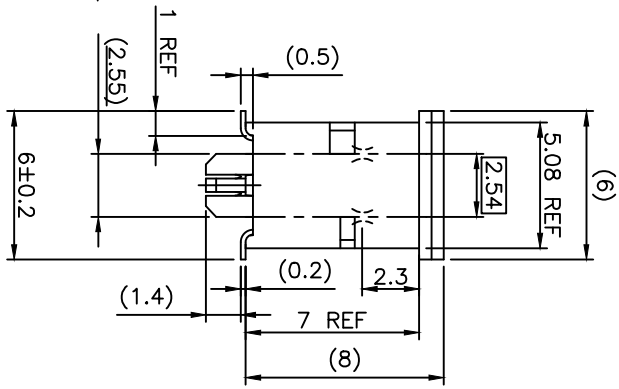
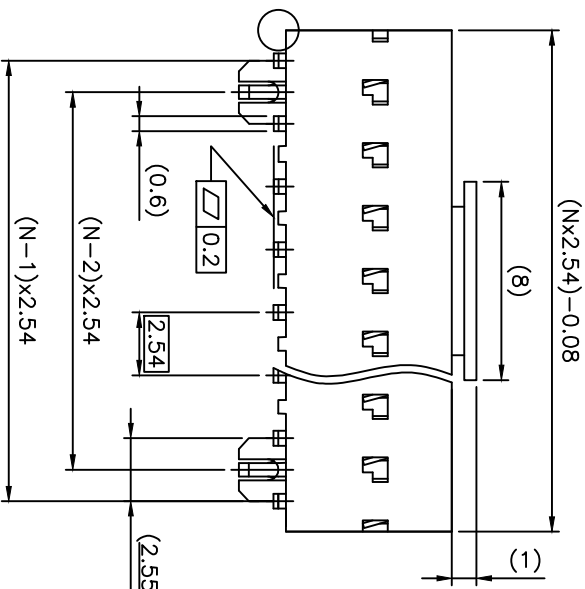
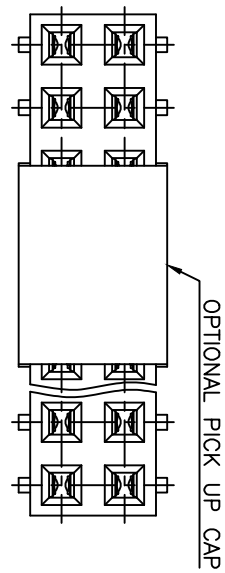
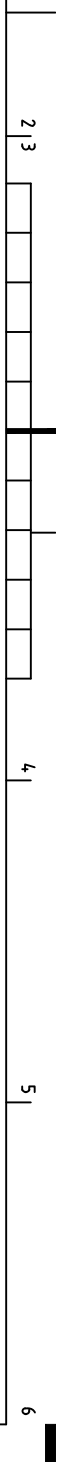




THE DATASHEET OF
91618-311BLF





SEE NOTE 7
 PICK UP CAP PACKED IN TA856.
 PICK UP CAP PACKED IN TUBE.
 5 PER ROW: 06 UP TO 30.
 DIMENSIONS ON SPECIAL REQUEST.

CONTACT AREA.
 TIN ON TAIL.
 CONTACT AREA.
 TIN ON TAIL.
 REPLATING

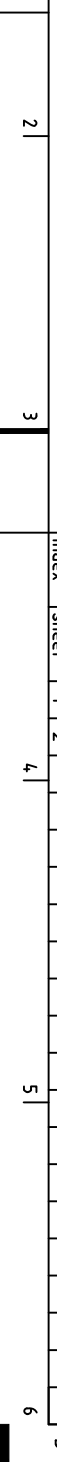
GLASS FILLED
 CONTACT COLOR: GREY.
 BRONZE.
 CONTACT PACKED IN TUBE.

ROW
 20.24 mm.
 0.842.
 ASSEMBLY(=0 INSERTION FORCE).
 DIMENSIONS

LEAD-FREE,
 1.27µm

STABILITY
 EXPOSURE TO
 30 SECONDS
 LEAD OR VAPOR

FORM GS-14-920
 0004





OPTIONAL PICK UP CAP

mat'l. code		surface		tolerance		projection		product family	
SEE NOTES		ISO 1302		ISO 406 ISO 1001		mm		DUBOX	
Ltr	ecrn no	dr	date	tolerances unless otherwise specified		mm		title	
W	F-21499	AMA	15.07.23			scale 5/1		BtB RECEIPT.	
R	F04-0347	DLE	04.11.10	#z'		linear		VERT DR SMT	
S	F06-0137	DLE	06.02.27	D LEGRAND		02.10.08		Sheet 1 of 2	
T	F06-0204	DLE	06.06.23	P NIZZI		02.10.08		size	
U	F11-0043	JCO	12.02.22	JF NOTTEAU		02.10.08		A3	
V	B-19123	LMU	14.10.21	pppl P NZ		02.10.08		Drawing	
Sheet	revision	W	B						
index	sheet	1	2						

Looking for pricing, stock, or lifecycle information?

Click below to explore more details on WIN SOURCE:

-  [View 91618-311BLF on WIN SOURCE](#)
-  [Amphenol FCI Information](#)

Optimize Your Supply Chain with WIN SOURCE Solutions

-  Global Sourcing Solution
-  Obsolete Management
-  Cost Control Management
-  Shortage Management
-  Alternative Solution
-  Excess Inventory Management