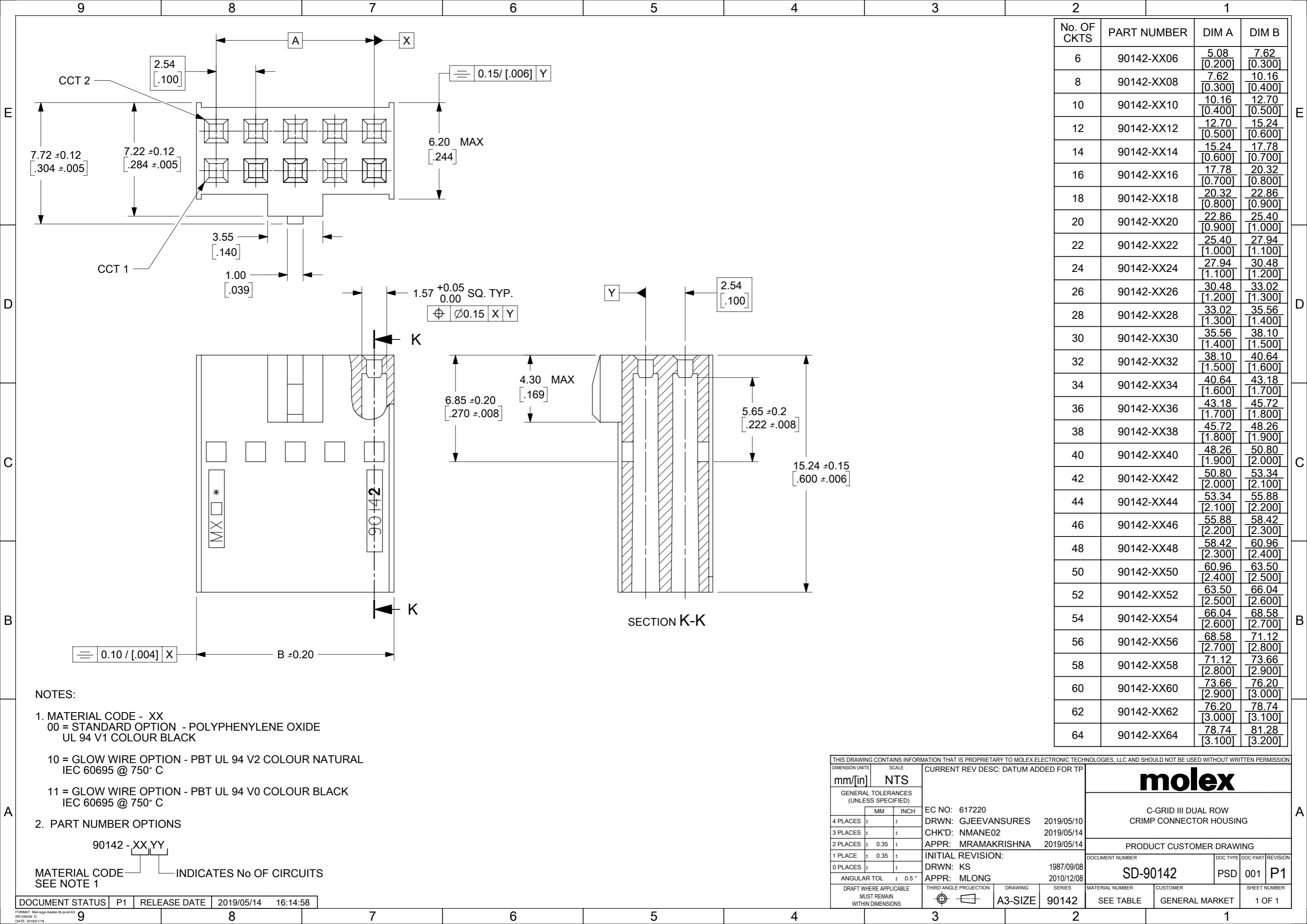




THE DATASHEET OF
90142-0012





No. OF CKTS	PART NUMBER	DIM A	DIM B
6	90142-XX06	5.08 [0.200]	7.62 [0.300]
8	90142-XX08	7.62 [0.300]	10.16 [0.400]
10	90142-XX10	10.16 [0.400]	12.70 [0.500]
12	90142-XX12	12.70 [0.500]	15.24 [0.600]
14	90142-XX14	15.24 [0.600]	17.78 [0.700]
16	90142-XX16	17.78 [0.700]	20.32 [0.800]
18	90142-XX18	20.32 [0.800]	22.86 [0.900]
20	90142-XX20	22.86 [0.900]	25.40 [1.000]
22	90142-XX22	25.40 [1.000]	27.94 [1.100]
24	90142-XX24	27.94 [1.100]	30.48 [1.200]
26	90142-XX26	30.48 [1.200]	33.02 [1.300]
28	90142-XX28	33.02 [1.300]	35.56 [1.400]
30	90142-XX30	35.56 [1.400]	38.10 [1.500]
32	90142-XX32	38.10 [1.500]	40.64 [1.600]
34	90142-XX34	40.64 [1.600]	43.18 [1.700]
36	90142-XX36	43.18 [1.700]	45.72 [1.800]
38	90142-XX38	45.72 [1.800]	48.26 [1.900]
40	90142-XX40	48.26 [1.900]	50.80 [2.000]
42	90142-XX42	50.80 [2.000]	53.34 [2.100]
44	90142-XX44	53.34 [2.100]	55.88 [2.200]
46	90142-XX46	55.88 [2.200]	58.42 [2.300]
48	90142-XX48	58.42 [2.300]	60.96 [2.400]
50	90142-XX50	60.96 [2.400]	63.50 [2.500]
52	90142-XX52	63.50 [2.500]	66.04 [2.600]
54	90142-XX54	66.04 [2.600]	68.58 [2.700]
56	90142-XX56	68.58 [2.700]	71.12 [2.800]
58	90142-XX58	71.12 [2.800]	73.66 [2.900]
60	90142-XX60	73.66 [2.900]	76.20 [3.000]
62	90142-XX62	76.20 [3.000]	78.74 [3.100]
64	90142-XX64	78.74 [3.100]	81.28 [3.200]

- NOTES:
- MATERIAL CODE - XX
 00 = STANDARD OPTION - POLYPHENYLENE OXIDE
 UL 94 V1 COLOUR BLACK

 10 = GLOW WIRE OPTION - PBT UL 94 V2 COLOUR NATURAL
 IEC 60695 @ 750° C

 11 = GLOW WIRE OPTION - PBT UL 94 V0 COLOUR BLACK
 IEC 60695 @ 750° C
 - PART NUMBER OPTIONS

90142 - XX YY
 MATERIAL CODE INDICATES No OF CIRCUITS
 SEE NOTE 1

THIS DRAWING CONTAINS INFORMATION THAT IS PROPRIETARY TO MOLEX ELECTRONIC TECHNOLOGIES, LLC AND SHOULD NOT BE USED WITHOUT WRITTEN PERMISSION

DIMENSION UNITS mm/[in]	SCALE NTS	CURRENT REV DESC: DATUM ADDED FOR TP	
GENERAL TOLERANCES (UNLESS SPECIFIED)		molex C-GRID III DUAL ROW CRIMP CONNECTOR HOUSING PRODUCT CUSTOMER DRAWING	
4 PLACES	±		
3 PLACES	±		
2 PLACES	± 0.35		
1 PLACE	± 0.35		
0 PLACES	±	EC NO: 617220 DRWN: GJEEVANSURES 2019/05/10 CHK'D: NMANE02 2019/05/14 APPR: MRAMAKRISHNA 2019/05/14	
ANGULAR TOL	± 0.5°	INITIAL REVISION: DRWN: KS 1987/09/08 APPR: MLONG 2010/12/08	
DRAFT WHERE APPLICABLE MUST REMAIN WITHIN DIMENSIONS		THIRD ANGLE PROJECTION	DRAWING SERIES
		A3-SIZE	90142
DOCUMENT STATUS		MATERIAL NUMBER	CUSTOMER
P1	RELEASE DATE 2019/05/14 16:14:58	SEE TABLE	GENERAL MARKET
		DOC TYPE	DOC PART
		PSD	001
		REVISION	P1
		SHEET NUMBER	
		1 OF 1	

Looking for pricing, stock, or lifecycle information?

Click below to explore more details on WIN SOURCE:

 [View 90142-0012 on WIN SOURCE](#)

 [Molex, LLC Information](#)

Optimize Your Supply Chain with WIN SOURCE Solutions

-  Global Sourcing Solution
-  Obsolete Management
-  Cost Control Management
-  Shortage Management
-  Alternative Solution
-  Excess Inventory Management