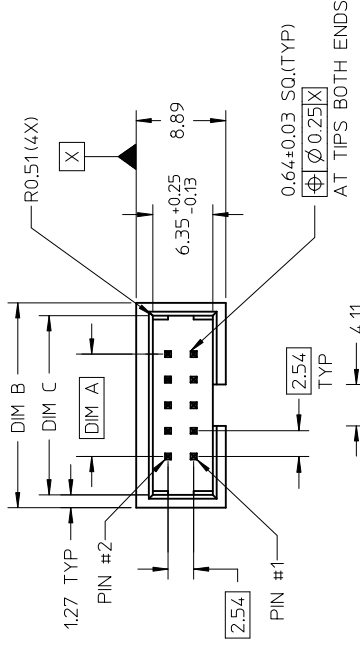




THE DATASHEET OF
87834-1011



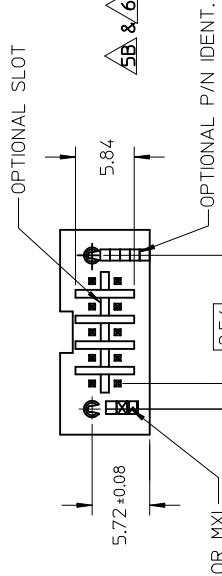
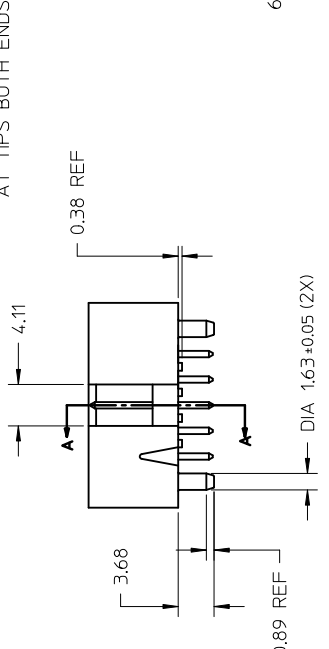


PART NUMBER LEGEND

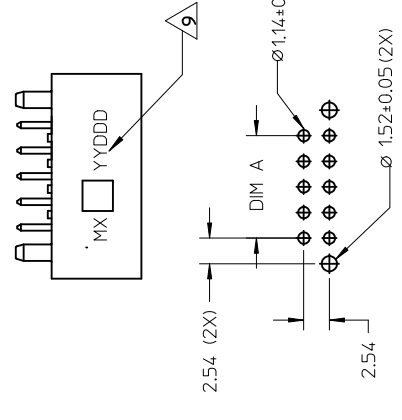
87834 - * * 1 1

CKT SIZES

ASSEMBLY P/N	CKT SIZE
87834-0411	04
87834-0611	06
87834-0811	08
87834-1011	10
87834-1211	12
87834-1411	14
87834-1611	16
87834-1811	18
87834-2011	20
87834-2411	24
87834-2611	26
87834-3011	30
87834-3411	34
87834-4011	40
87834-4411	44
87834-5011	50
87834-5611	56
87834-6011	60
87834-6411	64



SECTION A-A



NOTES :

1. MATERIAL : HOUSING : NYLON 46 (PIN : COPPER AL)
2. PIN PUSHOUT FORCE ()
3. PRODUCT SPECIFICATION
4. WAFER TO BE FLAT WITHIN DIMENSIONS FOR PLATING

5. DIMENSIONS FOR PLATING
6. GOLD END OF PIN UNLESS OTHERWISE SPECIFIED
7. FINISH : 0.13um MIN GOLD FLAS IN SELECTED AREA AREA OVER 1.27um MIN
8. FOR ILLUSTRATION PURPOSES ONLY
9. OPTIONAL LOCATION FOR PIN IDENTIFICATION IF REQUIRED BY CUSTOMER

QUALITY SYMBOLS	GENERAL TOLERANCES (UNLESS SPECIFIED)	MM ONLY	SCALING
▶=0	4 PLACES ± --- INCH	DRAWN BY	DATE
∇=0	3 PLACES ± ---	RSHAN	2003/11/21
	2 PLACES ± 0.20	CHECKED BY	DATE
	1 PLACE ± ---	KCLING	2003/12/05
	ANGULAR ± 3 °	APPROVED BY	DATE
	DRAFT WHERE APPLICABLE MUST REMAIN WITHIN DIMENSIONS	SKTOH	2003/12/06
		MATERIAL NO.	DOCUMENT NO.
		SEE TABLE A3	SD-
		THIS DRAWING CONTAINS INCORPORATED AND SHOULD	

REV	DESCRIPTION
A4	REMOVE 72CKT OPTION
	FC NO: S2012-0308
	DRW:ATSEE
	CHKD:SKANG
	APPR:MLONG
	2012/01/10

RECOMMENDED PCB PATTERN

Looking for pricing, stock, or lifecycle information?

Click below to explore more details on WIN SOURCE:

 [View 87834-1011 on WIN SOURCE](#)

 [Molex, LLC Information](#)

Optimize Your Supply Chain with WIN SOURCE Solutions

-  Global Sourcing Solution
-  Obsolete Management
-  Cost Control Management
-  Shortage Management
-  Alternative Solution
-  Excess Inventory Management